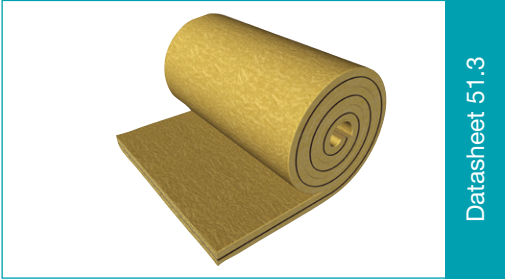
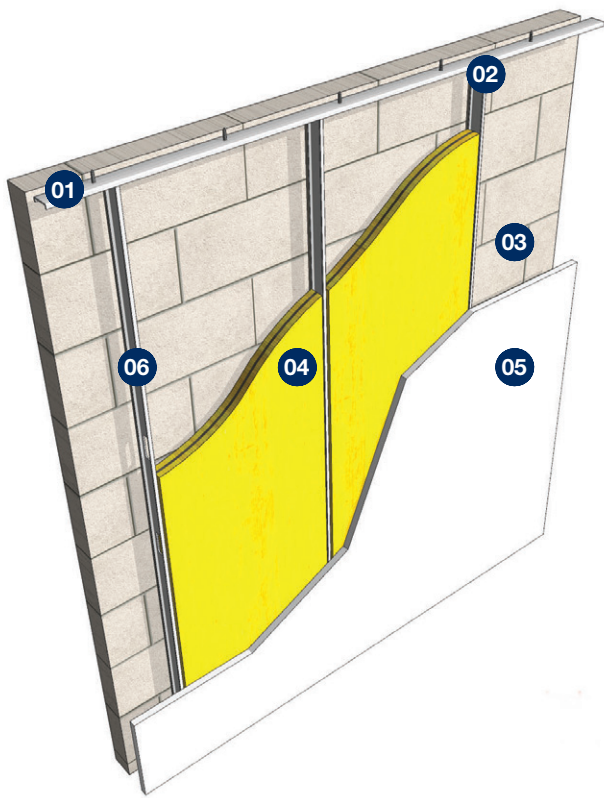


Acoustic Quilt



Datasheet 51.3

INDEPENDENT WALL LINING



- 01 Min 20mm Air Gap between wall and metal stud
- 02 Stud fixed to surrounding wall/floor/ceiling not to offending wall
- 03 100mm Lightweight Block Wall
- 04 JCW Acoustic Quilt
- 05 1 layer x 15mm Acoustic Plasterboard
- 06 50mm Independent Metal Stud

Product Code: 1030 - 1200mm Wide 1029 - 600mm Wide	
Premium acoustic partition roll manufactured by sandwiching an acoustic barrier membrane between 2 layers of glass mineral wool	
<ul style="list-style-type: none"> • Independent partition with 20mm air gap • Easily fitted using dry lining skills • Glass mineral wool layers complement the barrier membrane by absorbing sound 	
Roll Size: 52mm x 600mm x 5m (3.00 m ²) Weight: 19 kgs 52mm x 1200mm x 5m (6.00 m ²) Weight: 38 kgs	
Typical Acoustic Performance of Wall Construction shown above Airborne: 49 dB Rw + Ctr	
Method of Compliance Approved Document E/ Section 5 Scotland	Ancillary Products 1027 JCW Acoustic Sealant (310ml) various JCW Acoustic Isolation Strips various JCW Fire & Acoustic Socket Box Inserts

Domestic Dwellings | Offices | Hotels | Conference Centres | Leisure Centres | Schools | Restaurants | Showrooms

Unit 32-34 Waters Meeting Development / Sales helpline **01204 548400** / sales@acoustic-supplies.com
 Britannia Way, Bolton, BL2 2HH / 8.30am - 5.00pm Monday to Friday / **www.acoustic-supplies.com**

JCW Acoustic Quilt Installation Guide

Independent Ceiling

Roll out and loose lay the JCW Acoustic Quilt in the opposite direction to the ceiling joists. Ensure that there are no gaps between each quilt layer. If necessary overlap the Quilt layers to maintain a continuous barrier.

Single Frame Partition Wall & Independent Wall lining

It is important that the JCW Acoustic Quilt is adequately secured between the studs to prevent slumping. 2off L brackets secured into the top of the frame or stud may be required.

Disclaimer: The product and installation information contained in this Data Sheet and General Installation Guide is to the best of our knowledge correct. Please contact us direct, prior to starting works, for the latest information to enable confirmation of the specification.

Domestic Dwellings | Offices | Hotels | Conference Centres | Leisure Centres | Schools | Restaurants | Showrooms



Unit 32-34 Waters Meeting Development
Britannia Way, Bolton, BL2 2HH

Sales helpline **01204 548400**
8.30am - 5.00pm Monday to Friday

sales@acoustic-supplies.com
www.acoustic-supplies.com