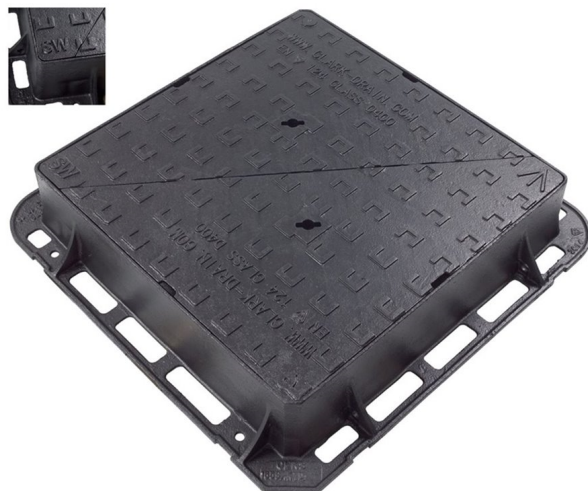




CD-1659A-KMDSW - Ductile Iron Kitemark Manhole Cover & Frame

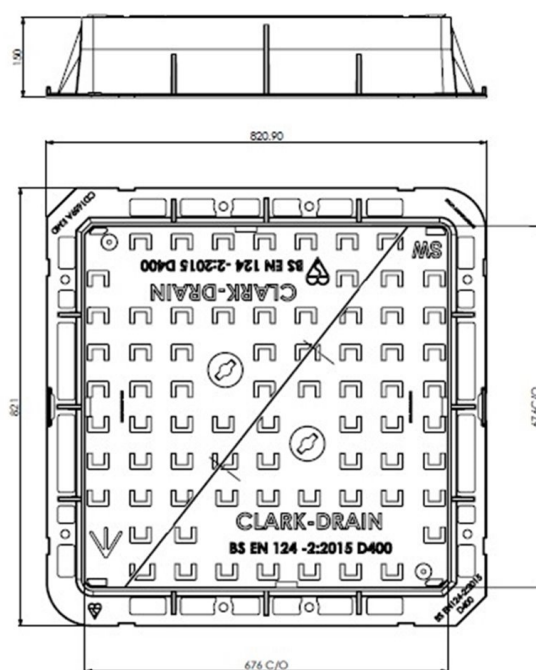
KEY FEATURES

- BSI Kitemark certified to BS EN124 2015
- Non-rock 3 point suspension covers
- Integral Lifting key Holes
- Available as a locking version
- Badged "SW"



CD-1659A-KMDSW - Specifications

Product Weight (Kg)	80
Clear Opening	675 x 675
Overall Dimensions	821 (L) x 821 (W) x 150 (D)
Cover Material	Spheroid Graphite Iron Grade EN-GJS-500-7 to BS EN 1563:2011 Temporary Bitumen based paint coating to BS 3416:1991
Frame Material	As per Cover
Load Rating	D400
Polished Skid Resistance Value	45+
Frame Pressure Bearing Area (N/mm2)	2.75



CD1659AKMDSW/V0.1/11-05-2023

Due to our continuous product improvement program features and sizes may be subject to change without notice.

CLARK DRAIN, STATION ROAD, YAXLEY, PETERBOROUGH, PE7 3EQ, TEL. +44 (0) 1733 765317