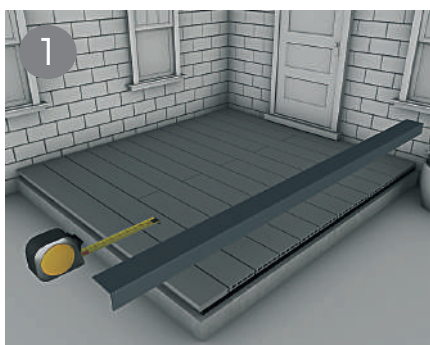
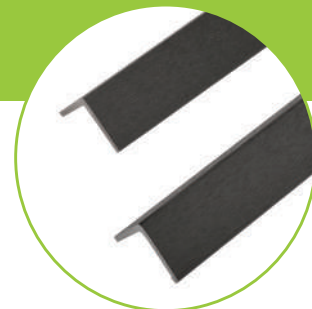


How to finish your Decking Installation guide

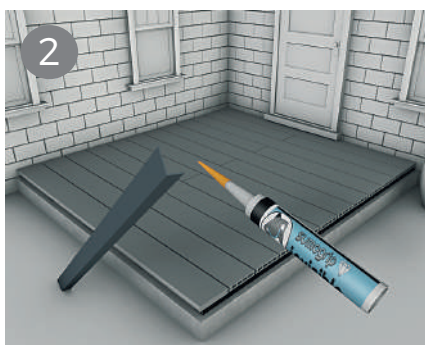
When creating your decking project there are lots of options for creating a high end finish from corner trims and bullnose boards for the edging and steps, to fascia boards for raised areas. This simple guide will show you how to install those options.

CORNER TRIMS

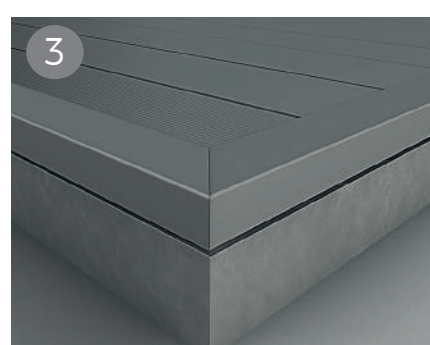
Corner trims are an L shape angle piece which can be used on the edges of your composite decking area. You can use a matching colour to compliment the rest of your project or even if you wanted a contrasting look, with each composite corner trim available in all 8 colours as the decking.



Take the corner trim and measure the length of the area its going to be fitted on to. Corner trims can be cut and worked just like timber so can be cut to desired size. If placing two trims side by side, simply butt up together.



Once the corner trim is cut to size, you can use sumogrip adhesive along one or both sides of the corner trim and attach to the edge of the decking. To allow for expansion you may wish to only glue the top edge to allow for some movement.

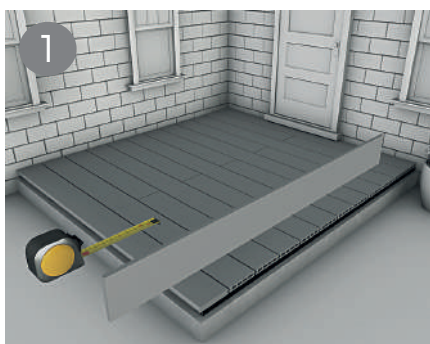


Once installed, you can then cut and place the second piece of trim along the edge until you have the desired finished look.

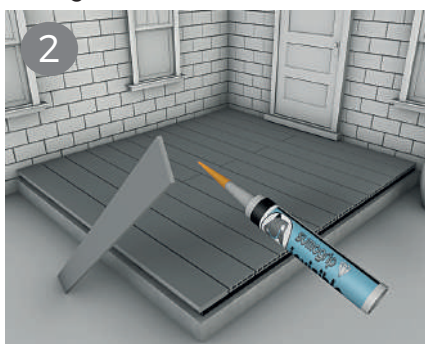


SKIRTING TRIM

Each skirting trim, just like our composite decking and cladding boards, can be cut to size and sanded to fit. Skirting trim can be used as a fascia to your decking project depending on the depth required. Skirting trim is available in 8 colours to match the decking.



Measure the edge of the decking area to obtain the length required, skirting trim can be cut to size as needed. If you need a longer length than 2.2m simply butt the two skirting edges up together.



To fit the skirting trim you can either glue this using sumo grip adhesive or the trims can be screwed into the joists (Please note this method may cause the natural fibres to split) We advise the sumo grip adhesive option.



Once installed, you can then cut and place the second piece of trim along the edge until you have the desired finished look.



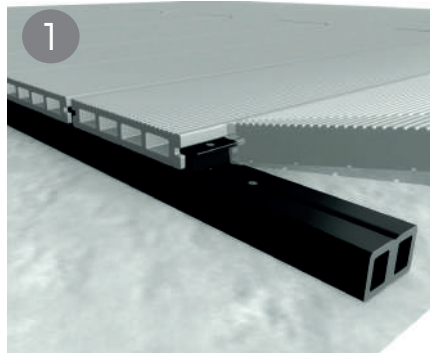
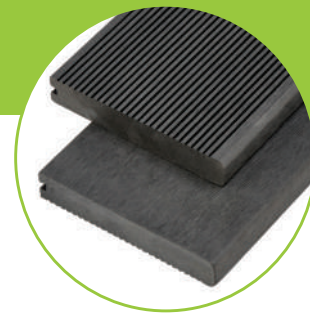
Order online at www.wpc-decking.co.uk
Call us on 01837 659901

Please always consult a professional before installing Cladco Composite Products

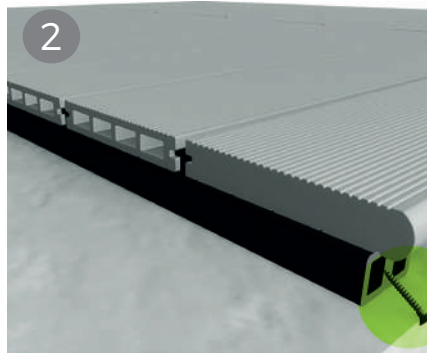
CLADCO
PROFILES

Bullnose Boards

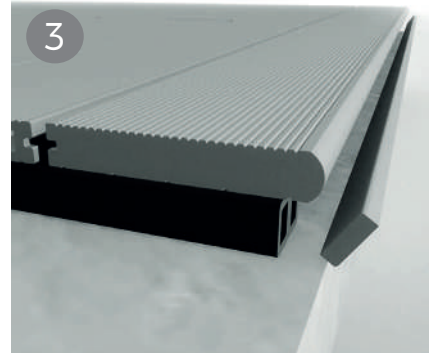
These decking boards are designed to give your decking project a professional finish to its borders. The rounded bullnose design creates a neat edge that can be used with all our composite decking profiles. Bullnose boards can be used into a picture frame effect as a different colour to the main deck, or in a complementary shade to blend in. They are also particularly good for steps.



1 After the last board of the main project has been laid, screw in a T clip along the edge of the final board. The bullnose board can then be inserted next to it.



2 Once the bullnose board is placed you will need to insert a screw at an angle through the supporting joist underneath the board. Ensure the bullnose board is supported along the length with joists and a screw is inserted into each one.



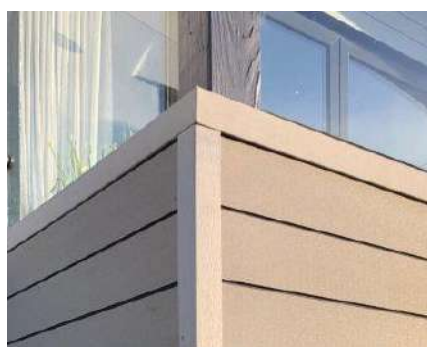
3 Once the bullnose board has been secured into place you can use a skirting board to neaten the edge. For higher areas you may wish to use a decking board as an edge. Secure the skirting edge with either a screw into each joist or using sumo grip adhesive.

FASCIA BOARDS

If creating a raised decking area you may wish to use a fascia board along the front edge, this can cover the support system used underneath the decking area. Depending on the height of your decking area you may wish to use decking boards, skirting trim or in some cases wall cladding can be used as a fascia.



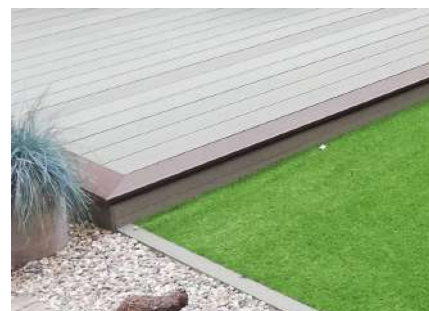
To use decking boards as a fascia, you will need to ensure you have suitable joists behind to secure the decking boards. Measure and cut the board to the desired size, you can then install these using the t clip system in a vertical or horizontal pattern.



To use wall cladding as a fascia, you will need to ensure you have suitable joists behind to secure the wall cladding onto, then simply screw through the lip of the wall cladding board and install the next board on top. This can be done in a vertical or horizontal pattern (see wall cladding installation guide for more information).

END CAPS

may be a tight fit, due to the natural fibres you may need to slightly sand them before placing on the ends of the boards. Ensure the end caps are not forced into place as this may cause them to snap.



Skirting Trims can also be used in areas where the front fascia is much smaller, as these boards are much thinner. Use sumogrip adhesive to secure these.



Order online at www.wpc-decking.co.uk
Call us on 01837 659901

Please always consult a professional before installing Cladco Composite Products

CLADCO
PROFILES