

## SIPHONED PLATE



### INDEX

#### 1. Code registry

#### 2. Use

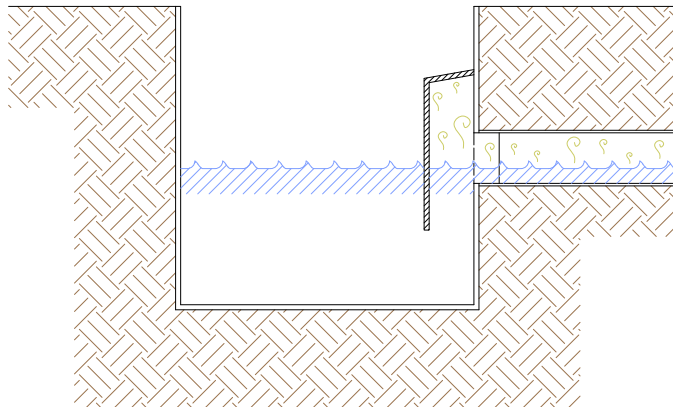
#### 3. Technical specification

### 1. CODE REGISTRY

Code	Description	Dimensions (mm)	Weight	Colour	Pkg. / Pallet
DCD-CP300-300-SP	Siphoned Plate	300 x 300	0,223 kg/pc.	Grey	170 pc. / 2.720 pcs

### MATERIAL

Made of PP (polypropylene).



### 2. USE

Used to allow the siphoning of the catch-pit, thanks to the easy application system.  
Non-compatible with Smart catch-pits.

### 3. TECHNICAL SPECIFICATION

Specification	Description	Unity	Price
	Supply and installation of plate is placed inside the catch-pit, along the grooves. It is available in various sizes: from 200 x 200 to 550 x 550 mm. Available in grey colour. Made of PP (polypropylene). Used to allow the siphoning of the catch-pit, thanks to the easy application system. <b>Non-compatible with Smart catch-pits.</b>		
DCD-CP300-300-SP	Dimension 300 x 300 mm.....	pc.	-