



INSTALLATION GUIDE

PASSIVE PURPLE® INTERNAL BRUSH |
2025/26



1. Area of use:

Passive Purple® Passivhaus Airtight Sealant is a high technology fibre reinforced polymer emulsion applied with a paintbrush for use in buildings on:

- Joist zones
- DPC zones
- Window formers
- Wall to ceiling connections
- Floor to wall connections
- Wall to wall connections
- Pipe penetrations
- Curtain walls
- Wall/ceiling/floor touch ups for surface sealing

2. System:

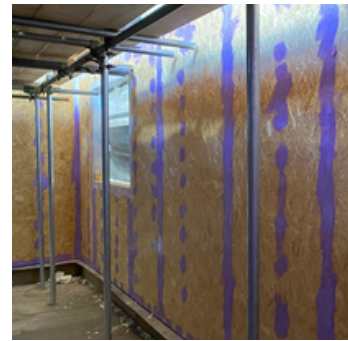
Passive Purple® Passivhaus Airtight Sealant is a VOC free, polymer-based putty like substance that is applied with a foil applicator and dries to form an airtight flexible coating with excellent adhesion on different substrates. This product is ready-to-use and can be applied in any direction and on any substrate including concrete, masonry, plaster/render, engineered wooden boards, tapes, membranes, aluminum, steel, PVC, PIR Insulation, foams, timber, blockwork.



Internal brick connections



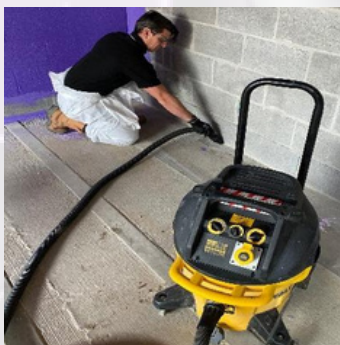
Timber frame connections



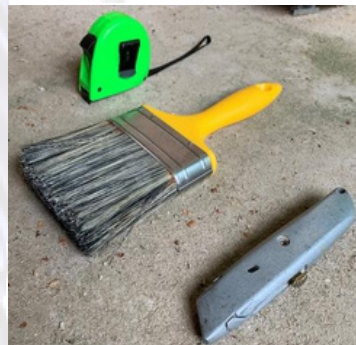
Window former

3. Materials and tools commonly used:

- Stanley Knife, bag for waste.
- Vacuum cleaner (also for removing standing water).
- Empty buckets, water for cleaning of tools.
- Products: Passive Purple® Passivhaus Airtight Sealant.
- Surface temperature meter, substrate must not be below 5°C.
- Personal safety equipment: Safety glasses, gloves, overalls, and masks.



Clean all areas.



Tools you will need.



Passivhaus Airtight Sealant

4. Individual protection:

Consult the Materials Safety Data Sheet prior to application. Although VOC FREE - Always work in well-ventilated areas. Avoid direct skin contact when product is in wet condition. You are advised to wear eye protection, glasses, gloves, overalls, mouth mask, gloves, and safety wear during application.



Gloves



Face fit mask



Goggles

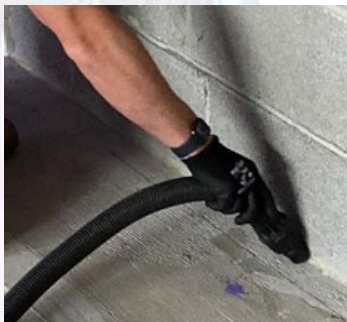


Spray suit

5. Inspection and preparation:

The successful sealing of Passive Purple® Passivhaus Airtight Sealant depends on the thorough preparation of the substrate. The following preparation instructions need to be followed.

- Standing water, dust and free particles are removed with the vacuum cleaner. Passive Purple® Passivhaus Airtight Sealant may be applied to humid surfaces.
- Remove also other types of surface pollutions that could diminish adhesion.
- Fill holes and joints over 7-10mm with a fast setting cement-based product or polyurethane foam.
- Apply Passive Purple® Passivhaus Airtight Sealant to connections such as at between the wall and damp course or joints and penetrations on the OSB/MGO or blockwork.



Vacuum all debris.



Passive Purple Passivhaus Airtight Sealant applied to wood fibre.

6. Application:

- Passive Purple® Passivhaus Airtight Sealant. Do not dilute with water or solvents.
- Apply with a foil applicator. Total advised indicative consumption: 0,5 - 1 kg/m².
- Clean paint all tools with water.
- For joints where movements are expected during the lifetime of the construction, apply Passive Purple® Passivhaus Airtight Sealant over the joint.
- Avoid, during the drying time, contact with any type of water, liquids or other construction product, during the drying process typically allow 24-48 hours to fully dry, (weather dependent).
- During the drying process, Passive Purple® Passivhaus Airtight Sealant will change colour from bright purple to a darker purple. Dark purple colour means that, Passive Purple® Passivhaus Airtight Sealant has dried out and is ready to finish on.
- Lap onto adjoining areas.



Internal brick connections.



Joist connection on to masonry wall.

7. Joining with other airtightness systems:

In case of doubt, consult the technical department of Intelligent Membranes®. If an area to be sealed with Passive Purple® Passivhaus Airtight Sealant needs to be joined with another area where airtightness is achieved with engineered wooden boards with taped seams, any gap between the two areas needs to be treated as outlined in paragraph 4. If the joint is made between concrete or masonry structures and wooden framed walls or roofs that are subject to shrinking and other movements butyl tape should be provided before final application of Passive Purple® Passivhaus Airtight Sealant.

8. Dont's:

- Do not apply Passive Purple® Passivhaus Airtight Sealant on a polluted or dusty substrate.
- Do not dilute Passive Purple® Passivhaus Airtight Sealant with water or solvents; avoid contact with any type of liquid during drying.
- Do not use a heat source at close range to aid drying.
- In case of damage to the Passive Purple® Passivhaus Airtight Sealant coating after drying, simply restore by cleaning the surface of the coating and re-applying an extra layer.
- Do not apply Passive Purple® Passivhaus Airtight Sealant whilst the substrate is under pressure: pressure testing must only be carried out once Passive Purple® Passivhaus Airtight Sealant is fully cured.

9. Storage:

- Store all Passive Purple® Passivhaus Airtight Sealant's in a dry frost free environment between 5°C and 35°C, avoid direct sunlight or contact with a heat source.
- Do not use product from damaged or broken containers.
- Shelf life: product will keep for 24 months from date of manufacture if kept according to these instructions in unopened containers. See batch number for date of production: ddmmyxx (dd:day/mm:month/y:year/xx:productcode)

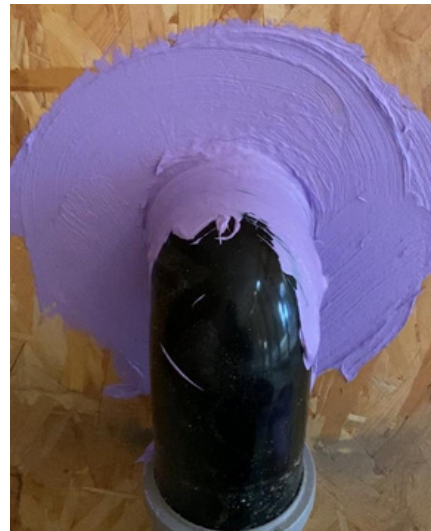
10. Disposal:

Please refer to product SDS information. Please recycle all used cartridges.

11. Areas of use:



Joist connection into masonry wall



Pipe connection through timber frame



Soil stack through floor



Retrofit

Precautions:

Consult the Materials Safety Data Sheet and the material compatibility sheet prior to application. Always work in well-ventilated areas. Avoid direct skin contact when product is in wet condition. You are advised to wear eye protection, face mask, gloves, and safety wear during application.

Further advice:

This advice is based on the experience of the Intelligent Membranes® for further information, please contact our head office. Product sheets, safety data sheets and independent test reports are available on request.

Intelligent Membranes®

United Kingdom

Clopton Farm

Croydon

Cambridgeshire

SG8 0EF

INFO@INTELLIGENTMEMBRANES.CO.UK

WWW.INTELLIGENTMEMBRANES.COM

UK (+44) 01223 208174

Canada +1 (613) 927 1011

USA +1 (347) 220 8403

