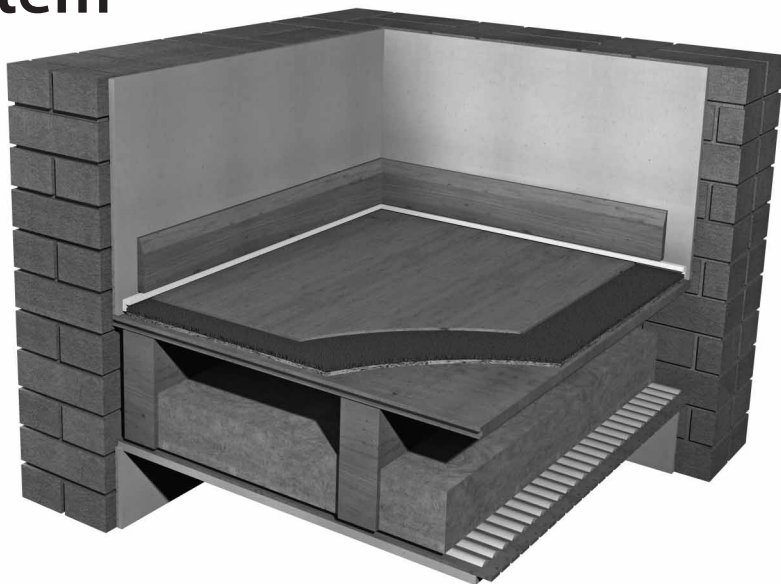


# Impact Mat 200 System

## Installation instructions



### IMPACT & AIRBORNE IMPROVEMENT SYSTEM for

- Refurbishments
- Conversions
- Listed buildings  
requiring minimal structural change



## PRODUCT DATA

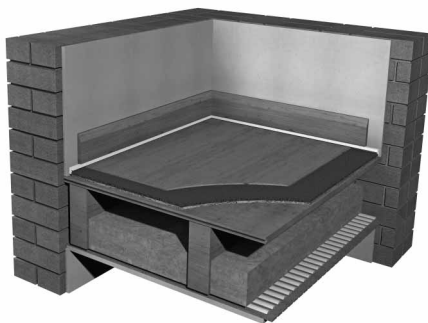
Sheet size:	1200mm x 1000mm
Resilient layer thickness:	8mm
Resilient layer:	Isofiba / barrier composite
Weight:	8.0kg/m <sup>2</sup>

## DESCRIPTION

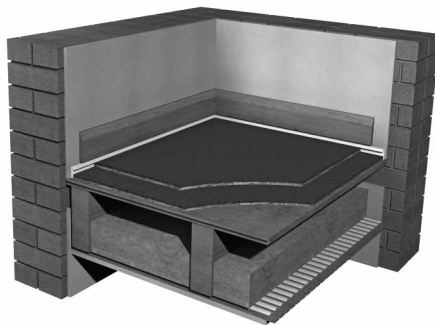
- ❑ The Isocheck Impact Mat 200 system is designed to reduce impact and airborne sound transmission through timber floors.
- ❑ To be used as a single layer or double layer over floorboards or concrete decks for conversions, refurbishments, new build or listed buildings requiring minimal structural change with a new plasterboard or existing lath and plaster ceiling.
- ❑ A single layer can also be used draped over joists and beneath floorboards.
- ❑ Isocheck Impact Mat 200 should be placed between the sub-floor and a finished timber floor or carpet.

## PREPARATION

- ❑ Ensure sub-floor surface is smooth, dry and free from debris and any existing floor coverings such as vinyl or carpet tiles must be removed together with any adhesive residue.
- ❑ Secure all loose floorboards ensuring all nails and screws are driven flush and securely fixed.
- ❑ Overlay the timber sub-floor with large sheets of ply or hard board if the floorboards are irregular or uneven.
- ❑ Remove any doors that open into the room being treated along with skirting if required.

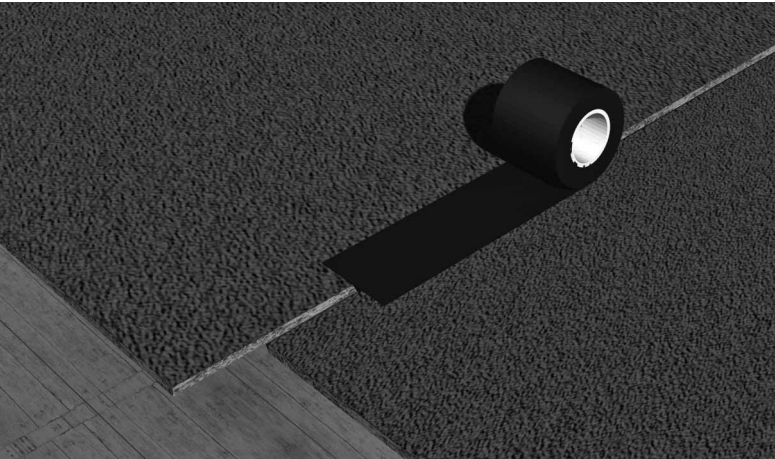
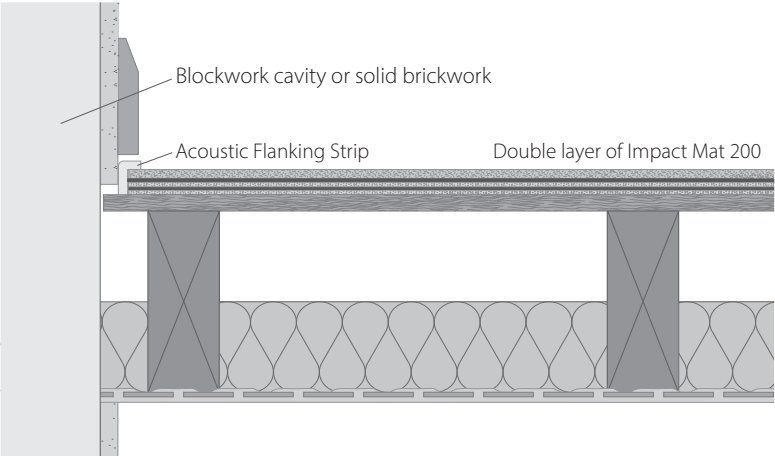
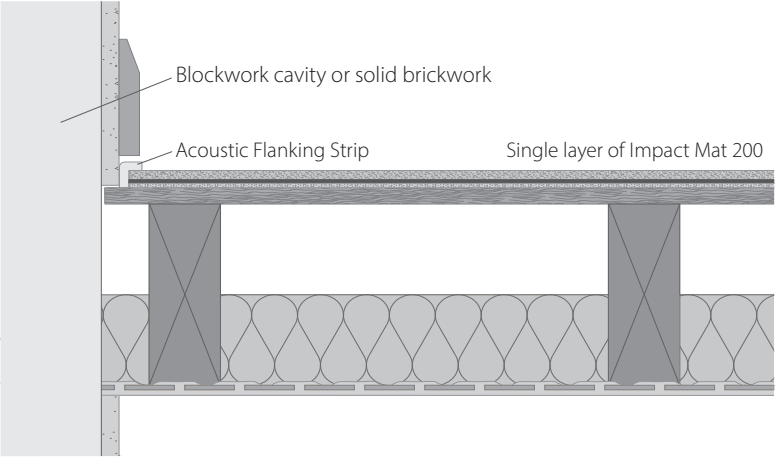


- Finished floor material (for example, engineered timber).
- One layer of Isocheck Impact Mat 200.
- 175mm x 50mm timber joists @ 450mm centres with 100mm 45Kg/m<sup>3</sup> insulation between joists.
- Lath and plaster ceiling or 30mm o/a double boarded ceiling (min. 20kg/m<sup>2</sup>) fixed to timber joists.



### Alternative construction:

- Floorboards.
- Two layers of Isocheck Impact Mat 200.
- 175mm x 50mm timber joists @ 450mm centres with 100mm 45Kg/m<sup>3</sup> insulation between joists.
- 30mm o/a double boarded ceiling (min. 20kg/m<sup>2</sup>) or lath and plaster ceiling fixed to timber joists.
- Note: finished floor and skirting boards omitted for clarity.



Butt-joint Impact Mat 200 and seal with 100mm tape.

## INSTALLATION - GENERAL

- ❑ Be aware that doors, skirting and socket height may need adjusting after the Isocheck Impact Mat 200 installation.
- ❑ Where you intend to use ceramic tiles or vinyl as a floor finish please contact us for additional advice.

## INSTALLATION

- ❑ Roll out Isocheck Impact Mat 200 directly on top of the sub-floor so that the entire floor surface area is covered and that it is butted up to or turned up where it terminates at all perimeter walls.
- ❑ In the case of a carpet finish Isocheck Impact Mat 200 will terminate at the edge of the gripper rail. In the case of a finished timber floor, the skirting should be removed and replaced once the mat has been returned on top of the finished floor.
- ❑ Bond to the sub-floor with Isocheck Impact Mat adhesive where appropriate and butt the adjoining edges followed by standard (100mm wide) building tape. Also tape the turned up edges to the wall to help with installation of a finished timber floor to receive the skirting later.
- ❑ Apply the finish floor surface on top of Impact Mat given due regard for the following.  
Carpets, Timber laminate panels and vinyl coverings can be placed directly over the Impact Mat 200 with an appropriate interlayer (as selected by the flooring contractor).

All mechanical penetrations through the Impact Mat should be avoided e.g. A finished solid timber floor would commonly be pinned to a min. 12mm plywood interlayer.

## FLANKING STRIPS

- ❑ Isocheck Flanking Strips provide isolation of the flooring system from all vertical structures and penetrations and should be used when a solid timber floor finish is required.
- ❑ The Flanking Strip is trapped to the wall and returned down over the finished timber floor. The skirting board is then fixed to the wall securing the Flanking Strip between the skirting board and the floor.
- ❑ After the skirting board is installed, simply trim the Flanking Strip flush with a sharp knife.

## PROTECTION

- ❑ Upon completion ensure the Isocheck Impact Mat 200 is protected from any mechanical damage where appropriate.

## HANDLING

- ❑ Please observe proper lifting methods and if transporting around site, by hand.

**If in doubt on any area, please call Isomass prior to commencement of work.**

Every effort has been taken in the preparation of this sheet to ensure the accuracy of representations contained herein. Recommendations as to the use of materials, construction details and methods of installation are given in good faith and relate to typical situations. However, every site has different characteristics and reliance should not be placed upon the foregoing recommendations. Advice can be given as to specific applications of the products, upon request to isomass building products.



Unit 14 Papworth Business Park, Stirling Way,  
Papworth Everard, Cambridgeshire CB23 3GY

**Tel: 0330 175 8228 • Email: [info@isomass.co.uk](mailto:info@isomass.co.uk) • [www.isomass.co.uk](http://www.isomass.co.uk)**