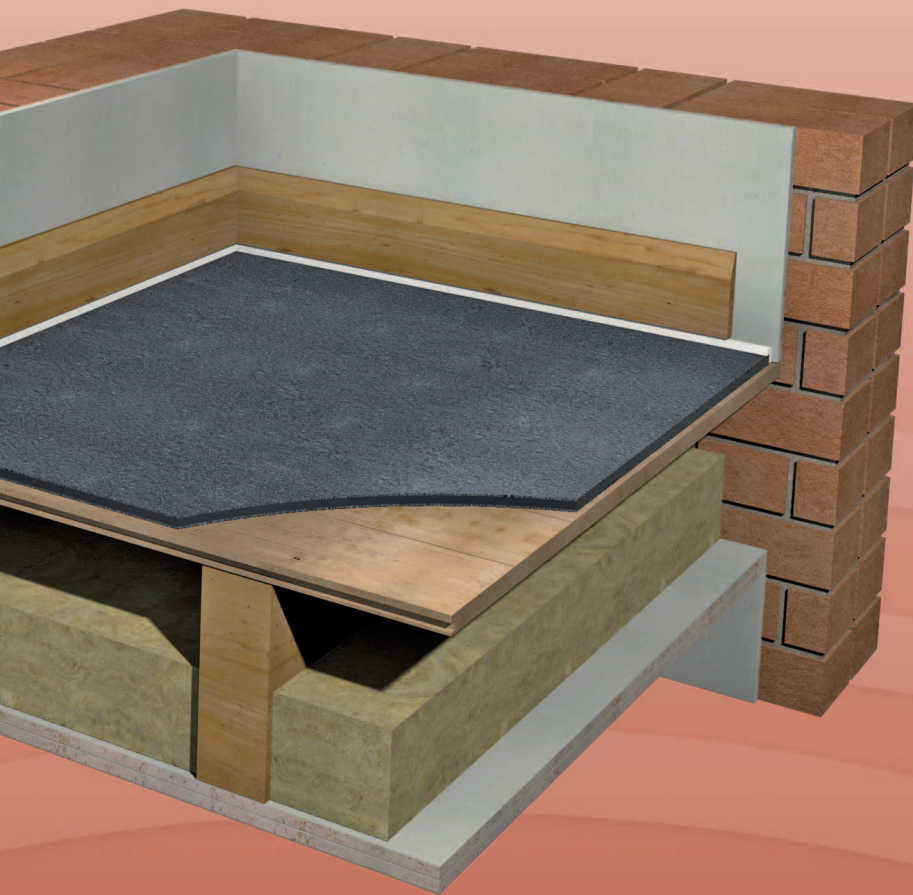


isocheck™

Impact Mat 300 System



IMPACT & AIRBORNE IMPROVEMENT SYSTEM

- Refurbishments
- Conversions
- Listed buildings requiring minimal structural change



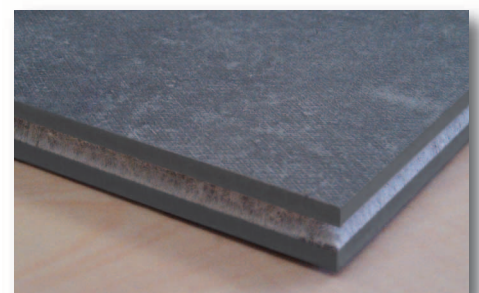
Taking the *mystery* out of Acoustics

DESCRIPTION

- ❑ The Isocheck Impact Mat 300 system is designed to reduce sound transmission through timber floors and staircases.
- ❑ Isocheck Impact Mat 300 is a 12mm tri-layer system with an Isofibre core which will provide impact and airborne improvement. It is ideal for floor upgrades when looking to improve sound reduction on stairs and under engineered floors.
- ❑ When installed as part of a complete party floor construction the system enables a timber floor to meet the sound transmission standards of Approved Document E 2003 and amendments in 2004, 2010, 2013 & 2015.

APPLICATIONS

- ❑ To be used over floorboards for conversions, refurbishments or listed buildings requiring minimal structural change.

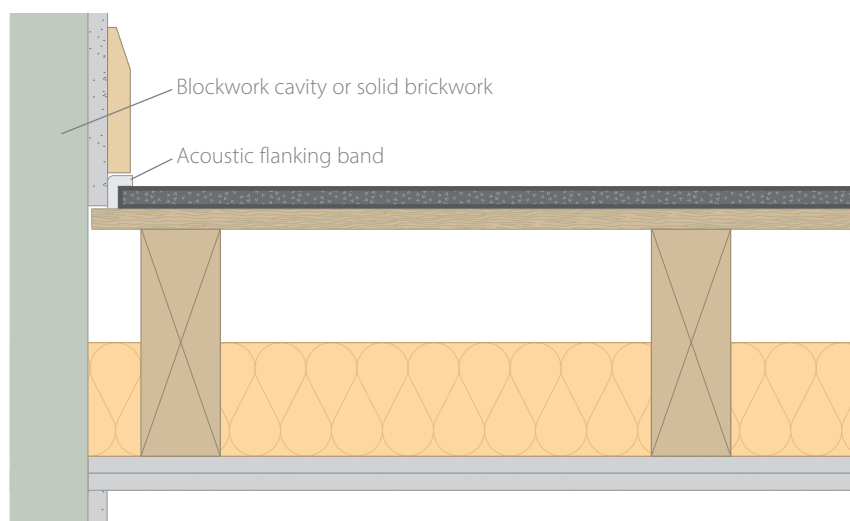


Product data

Overall size:	1200mm x 1000mm mat
Resilient layer:	12.0mm tri-layer with Isofibre core
Weight:	12.5kg/m ²

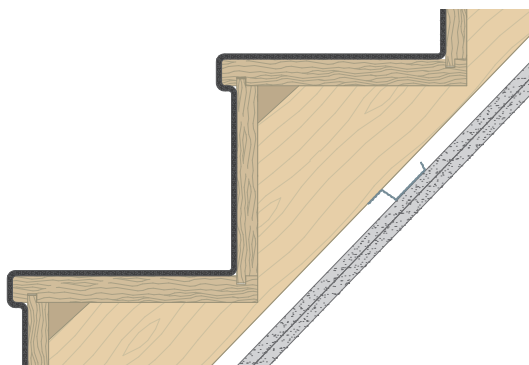
Performance

Isocheck Impact Mat 300 will achieve up to **33dB** ΔL_w in an impact performance test, and a **2** to **3dB** improvement in an airborne site test ($D_{nT,w} + C_{tr}$).



- ❑ Isocheck Impact Mat 300.
- ❑ floorboards.
- ❑ 200mm x 70mm timber joists @ 450mm centres.
- ❑ 100mm 45Kg/m³ insulation between joists.
- ❑ lath and plaster ceiling or 25mm o/a double boarded ceiling (min. 20kg/m²) fixed to timber joists.
- ❑ Acoustic flanking band reduces impact vibration leaking via structural walls and assists in reducing airborne sound paths (on both constructions).

- ❑ Isocheck Impact Mat 300 over timber staircase.
- ❑ 20kg/m² double boarded 25mm o/a plasterboard on resilient bars @ 400mm centres laid across staircase.



Every effort has been taken in the preparation of this sheet to ensure the accuracy of representations contained herein. Recommendations as to the use of materials, construction details and methods of installation are given in good faith and relate to typical situations. However, every site has different characteristics and reliance should not be placed upon the foregoing recommendations. Advice can be given as to specific applications of the products, upon request to isomass building products.

SPECIFICATION

The acoustic floor shall be:

- ❑ Isocheck Impact Mat 300, supplied by Isomass Ltd. Unit 14 Papworth Business Park, Stirling Way, Papworth Everard, Cambridgeshire CB23 3GY and installed in accordance with manufacturer's instructions / recommendations.

INSTALLATION

- ❑ Lay Isocheck Impact Mat 300 over the entire level floor with all joints butted.
- ❑ Most t&g or interlocking laminate panel floor finishes can be laid directly onto isocheck Impact Mat 300 although a 3mm layer of plywood over the Mat would improve performance and stability. If in doubt please contact us with the floor specification.
- ❑ Finished timber floors should be isolated from the skirting using isocheck Acoustic Flanking Band.
- ❑ Full installation instructions are available and must be used in conjunction when laying this floor system.

For advice on treatment of services and penetrations, consult our brochure or visit our website.

Please ask Isomass for guidance when considering the weight of any new blocks which will be incorporated in a wall directly surrounding a timber separating floor.