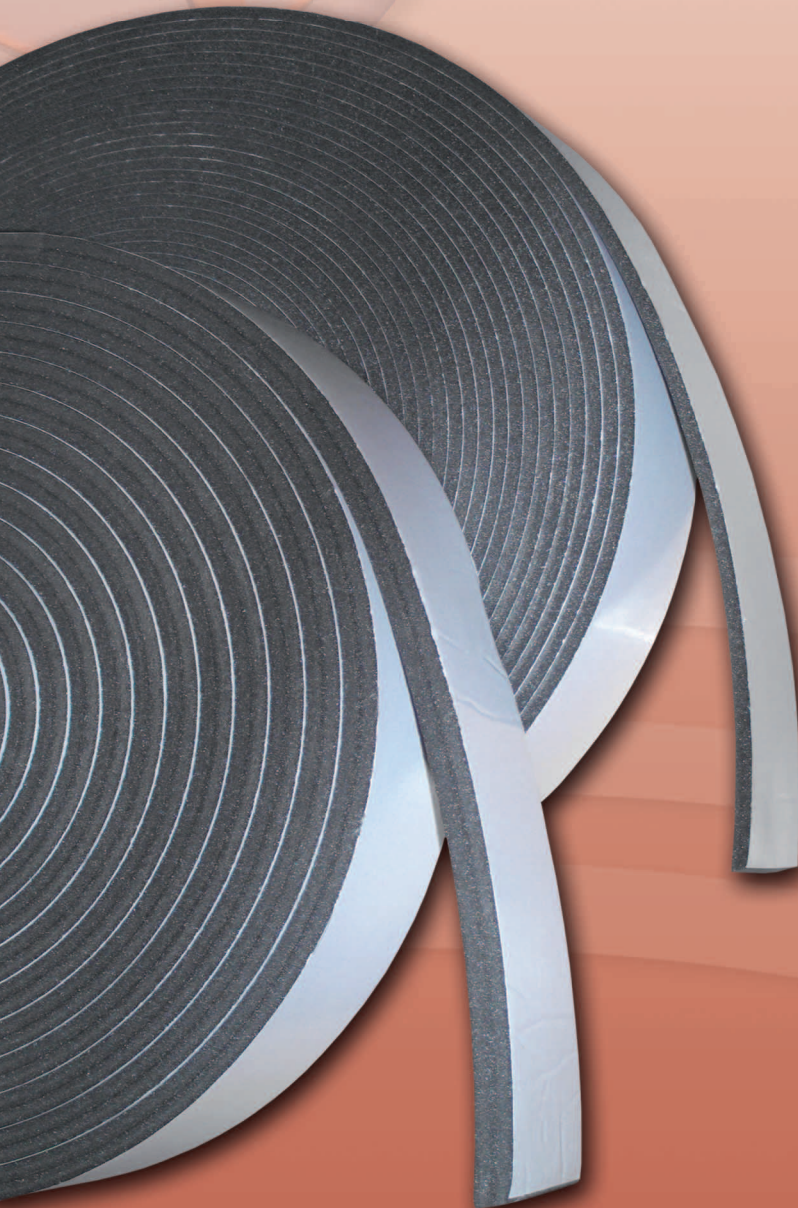


isocheck™

Isolation Strip



IMPACT SOUND TRANSMISSION REDUCTION SYSTEM (for partition/separating walls & floors)

- New build
- Conversion
- Refurbishment



Taking the *mystery* out of Acoustics

DESCRIPTION

- ❑ Isocheck Isolation Strips are designed to enhance impact sound insulation when used within all types of construction by isolating timber, steel and masonry separating and partition walls.
- ❑ The Isolating Strips are composed of cross linked Isopoli foam or expanded EPDM for higher loads, with a self adhesive layer on one side.

BENEFITS

- ❑ Isocheck Isolation Strip is ideal for upgrades when looking to increase impact sound insulation from foot fall noise on floors and reduce structure-borne noise from doors closing and light switches on stud walls.
- ❑ The hi-load EPDM version is commonly used to isolate structural walls in Cross laminated timber (CLT) and Timber Frame construction.
- ❑ Isocheck Isolation Strip has no adverse effect on the structural stability of the walls and its adhesive backing ensures it can be held in position as the work progresses.

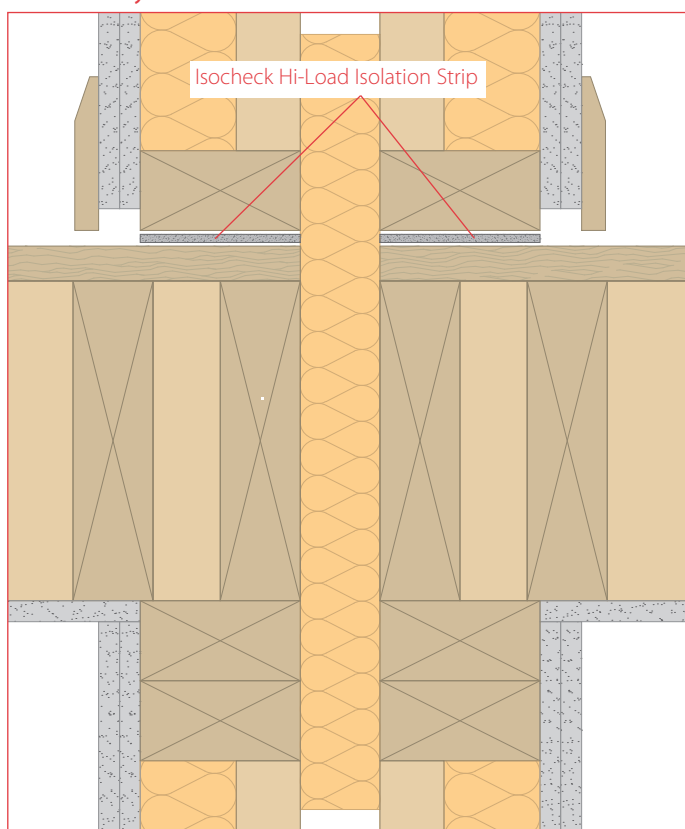


Product data

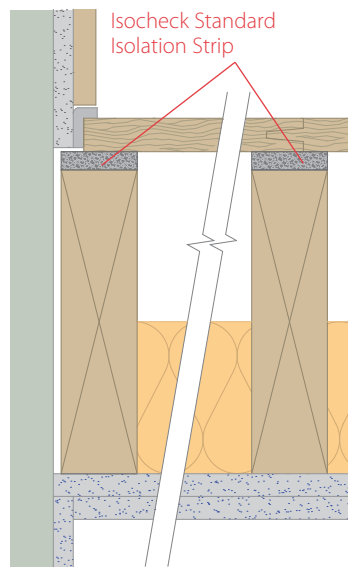
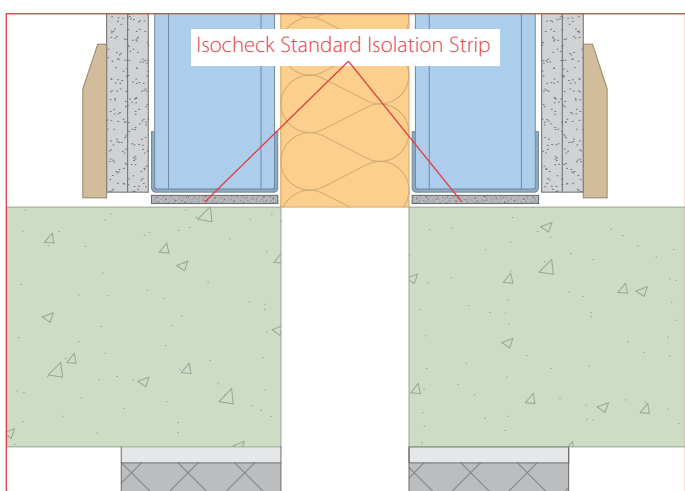
Common roll sizes*:	Standard isolation strip <ul style="list-style-type: none"> • 5mm thick x 25m long available in 50mm, 75mm 100mm widths • 10mm thick x 10m long available in 50mm, 75mm 100mm widths
Composition:	Cross linked Isopoli foam, self adhesive one side available in white and black
Common roll sizes*:	Hi-Load EPDM system <ul style="list-style-type: none"> • 4mm thick x 25m long available in 50mm, 75mm 100mm widths
Composition:	145kg/m ³ expanded EPDM, self adhesive one side

Many other sizes are available to order both in varying widths and thicknesses.

② Isolating a separating or partition wall in a timber frame system



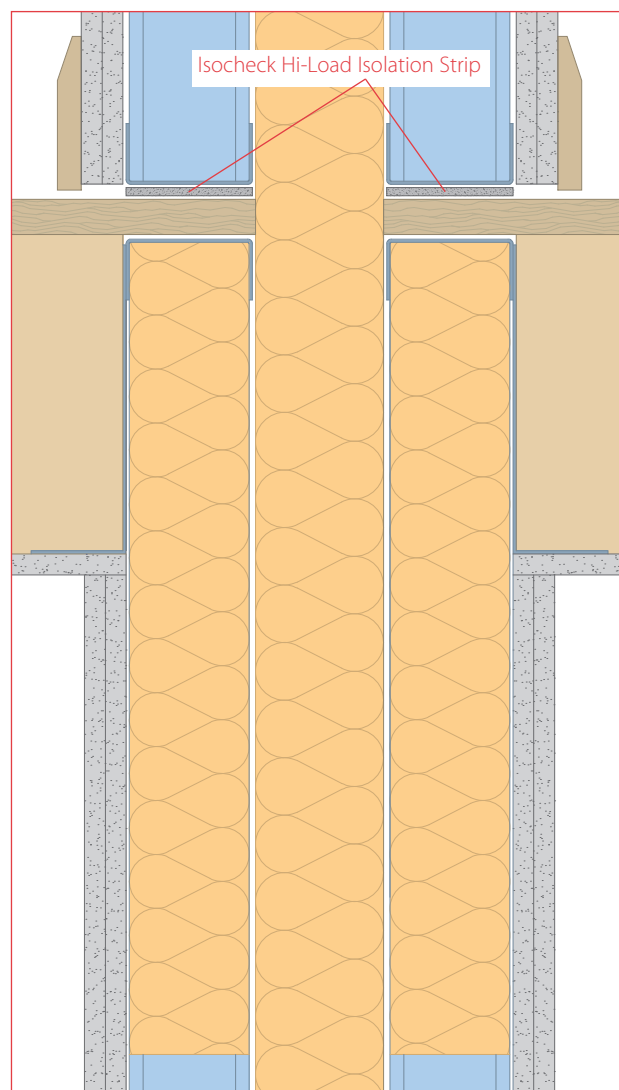
③ Isolating a steel separating or partition wall over a concrete floor



① Installation direct to timber joists

- ❑ Remove backing tape and bond Isolation Strip to the top of timber joists joints.
- ❑ Apply Isocheck Flanking Band on the edges of the floorboards just before they are pushed against the perimeter walls to isolate the board from the wall.

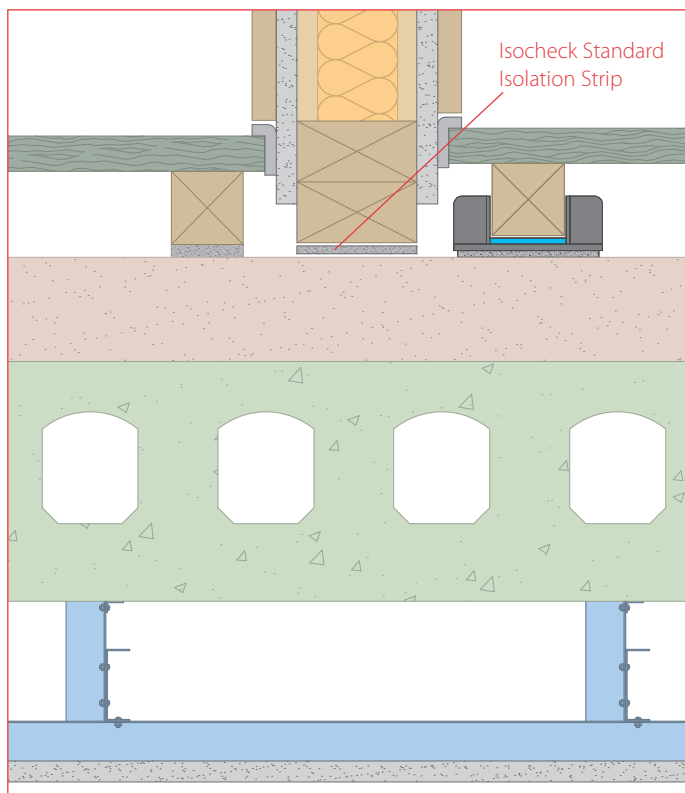
④ Isolating a steel separating or partition wall over a timber floor



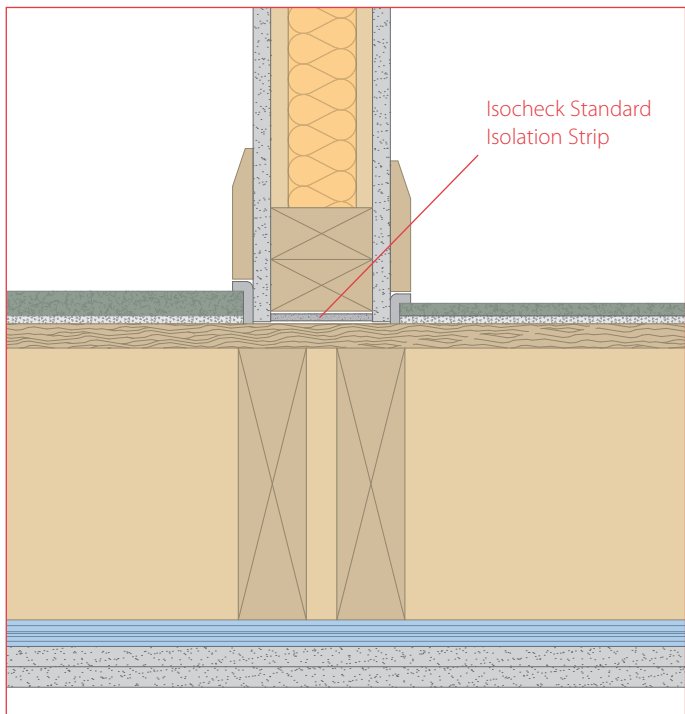
Notes

- ❑ Detail ① shown indicates how typically to enhance the impact performance in the floor of a domestic dwelling.
- ❑ Details ②, ③ and ④ shown indicates how typically to reduce structural noise in partition walls with Isocheck isolation tape.

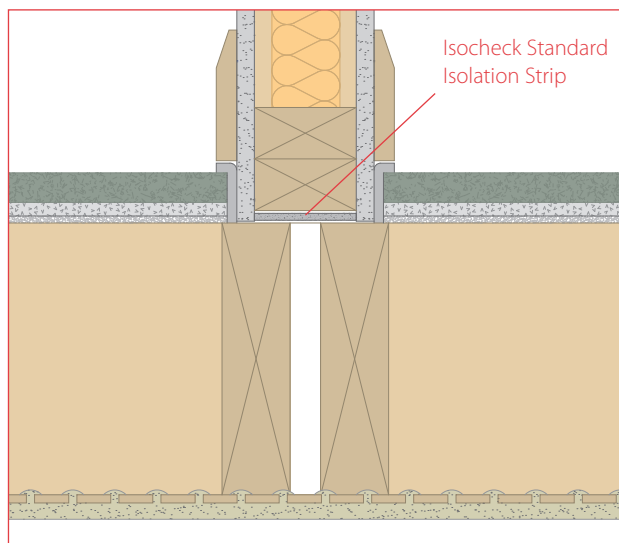
⑤ Isolating a timber stud wall over a concrete/screed floor



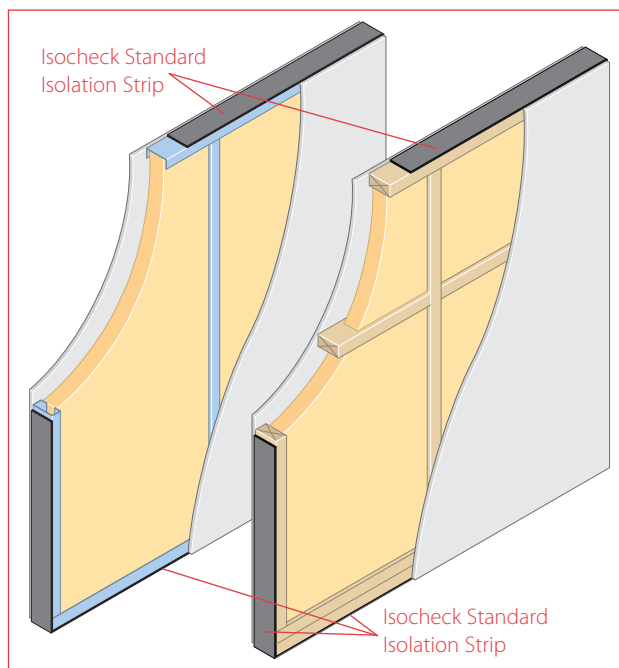
⑥ Isolating a timber stud wall over timber floorboards



⑦ Isolating a timber stud wall over timber joists



⑧ Isolating the edges of a timber or steel stud wall



Notes

- ❑ Detail ⑤ shown with Isocheck Shallow Batten floating floor system (left) and Isocheck Cradle floating floor system (right).
- ❑ Detail ⑥ shown with Isocheck 24T floating floor system (left) and Isocheck 15T floating floor system (right).
- ❑ Detail ⑦ shown with Isocheck 37T or 32T floating floor system.
- ❑ Detail ⑧ showing Isocheck Isolation Strip isolating the timber or steel stud wall. The isolation strip at the head of the stud wall is optional.

Every effort has been taken in the preparation of this sheet to ensure the accuracy of representations contained herein. Recommendations as to the use of materials, construction details and methods of installation are given in good faith and relate to typical situations. However, every site has different characteristics and reliance should not be placed upon the foregoing recommendations. Advice can be given as to specific applications of the products, upon request to isomass building products.