

# Savoy Floor

Glazed Porcelain  
Wall and Floor Tiles



---

 **Savoy Floor** is available in **one** subtle and versatile size.

---

**Size**



200 x 200mm

---

**Thickness**

200 x 200mm = 8.5mm

---

**N.B**

Each carton of SAVF2M Beige Mix and SAVF3M Blue Mix contains a random selection of all four available design options.

Before fixing tiles, several cartons should be opened, and their contents mixed, to ensure that the size, shade, colour and patterning are acceptable.

---

 **One finish**, combining both form and function.


Example below is not to scale but has been enlarged to show detail:



---

**Natural**

---

 **Four colours**, offering a neutral and contemporary palette.

For the most up-to-date availability information, please visit our website.



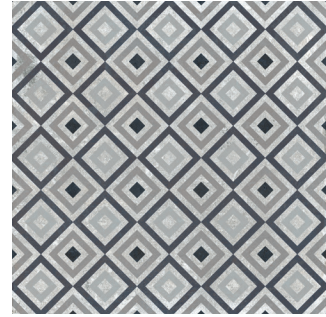
**Concrete**

PEI IV



**Concrete Décor**

PEI IV



**Grey Square**

PEI IV



**Beige Square**

PEI IV



**Blue Square**

PEI IV



**Beige Mix**



PEI IV



**Blue Mix**



PEI IV





Concrete PEI IV

---

### Concrete

**Size**

200 x 200mm

**Finish**

Natural

SAVF IN

---



Concrete Décor PEI IV

---

### Concrete Décor

**Size**

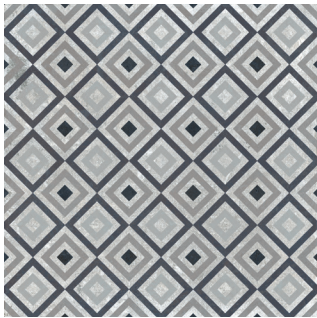
200 x 200mm

**Finish**

Natural

SAVF ID

---



Grey Square PEI IV

---

### Grey Square

**Size**

200 x 200mm

**Finish**

Natural

SAVF IS

---



---

Savoy Floor Beige Mix Natural  
200 x 200mm



Beige Square PEI IV

---

### Beige Square

Size

200 x 200mm

Finish

Natural

SAVF2S

---



Blue Square PEI IV

---

### Blue Square

Size

200 x 200mm

Finish

Natural

SAVF3S

---



Beige Mix

PEI IV

---

### Beige Mix

Size

200 x 200mm

Finish

Natural

SAVF2M

---



Blue Mix

PEI IV

---

### Blue Mix

Size

200 x 200mm

Finish

Natural

SAVF3M

---

---

**Savoy Floor**, a contemporary range of glazed porcelain wall and floor tiles featuring a rustic concrete effect design and a selection of co-ordinating geometric patterns.

For more details on suitability, or advice on any technical issues, please contact our technical helpline below.

---

### Specification

#### Size - All Sizes

Wall	Floor	Shade Variation	Material	Finish
Internal and External	Internal	V3	Glazed Porcelain (Bla)	Natural

#### Floor Values - Natural

Colour	Pendulum 4S	R Value	Wet Ramp	Wet Barefoot	Traffic
All Colours	Dry 36+ Wet 36+	-	-	-	Commercial

Due to the manufacturing process of all floor tiles there may be small variations in slip resistance. Given this, we suggest you refer to our website or call our technical helpline for the most up-to-date information.

---

### Colour Notations

Due to the variation in colour and pattern of these tiles, accurate Light Reflectance Values and Colour Notations cannot be accurately calculated. For further information, please contact our technical helpline below.



Front Cover Image 1: **Savoy Floor All Colours and Designs Natural 200 x 200mm**  
Front Cover Image 2: **Savoy Floor Concrete and Concrete Décor Natural 200 x 200mm**  
Front Cover Image 3: **Savoy Floor All Colours and Designs Natural 200 x 200mm**

---

### Samples

Tel: +44 (0)1782 524043  
Fax: +44 (0)1782 577379  
Email: [samples@johnson-tiles.com](mailto:samples@johnson-tiles.com)

### Technical Helpline

Tel: +44 (0)1782 524111  
Fax: +44 (0)1782 577379  
Email: [techadvice@johnson-tiles.com](mailto:techadvice@johnson-tiles.com)

