



3 Colours



1 Finish



3 Sizes

# Street

Glazed Porcelain  
Wall and Floor Tiles

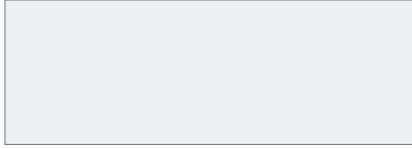


---

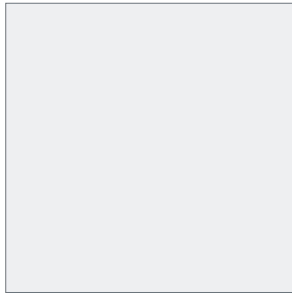
**Street** is available in **three sizes**, perfectly designed for easy installation.

---

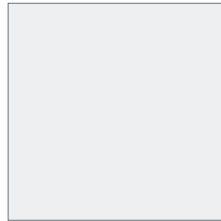
**Size**



850 x 300mm



600 x 600mm



450 x 450mm

---

**Thickness**

450 x 450mm tiles in this range are 9mm thick. All other tiles are 10mm thick.

---

**One finish**

Example below is not to scale but has been enlarged to show detail:



---

**Matt**

---

**Three colours** offering a neutral and contemporary palette.



**Vapour**

**PEI IV**

---

**Vapour**

**Size**

450 x 450mm  
600 x 600mm  
850 x 300mm

**Finish**

Matt

STRT1N  
STRT1N  
STRT1N

---



**Pewter**

**PEI II**

---

**Pewter**

**Size**

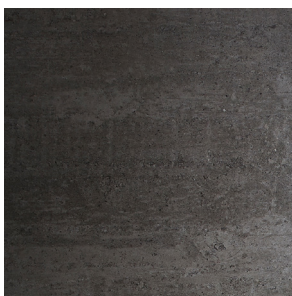
450 x 450mm  
600 x 600mm  
850 x 300mm

**Finish**

Matt

STRT2N  
STRT2N  
STRT2N

---



**Iron**

**PEI II**

---

**Iron**

**Size**

450 x 450mm  
600 x 600mm  
850 x 300mm

**Finish**

Matt

STRT3N  
STRT3N  
STRT3N

---

---

**Street** is a modern concrete effect tile. Mix the tonal colours of **Street** to create zoned areas within a space.

For more details on suitability, or advice on any technical issues, please contact our technical helpline below.

---

## Specification

### Size - All sizes

Wall	Floor	Wet barefoot	Material	Finish
Internal and external	Internal	-	Glazed Porcelain	Matt

### Floor values

Colour	Pendulum 4S	R value	Shade variation	Wet ramp	Traffic
Vapour	Dry 36+ Wet 25 - 35	R9	VI	-	Commercial
All other colours	Dry 36+ Wet 25 - 35	R9	VI	-	Domestic

Due to the manufacturing process of all floor tiles there may be small variations in slip resistance. Given this, we suggest you refer to our website or call our technical helpline for the most up-to-date information.

---

## Colour notations

Code	Colour	NCS	LRV
STRT3N	Iron	6005-Y80R	18
STRT2N	Pewter	4502-Y	29
STRT1N	Vapour	2002-Y50R	55

**Note:** These results are from Johnson Tiles' internal test reports and are to be used for guidance only. LRV: Light Reflectance Value (Reflectance Y).

Front cover image: **Street Iron**

---

## Samples

Tel: +44 (0) 1782 524043  
Fax: +44 (0) 1782 577379  
Email: [samples@johnson-tiles.com](mailto:samples@johnson-tiles.com)



---

## Technical helpline

Tel: +44 (0) 1782 524111  
Fax: +44 (0) 1782 577379  
Email: [techadvice@johnson-tiles.com](mailto:techadvice@johnson-tiles.com)

---

[www.johnson-tiles.com](http://www.johnson-tiles.com)

© 2016 Johnson Tiles.  
All rights reserved.  
Printed in England.