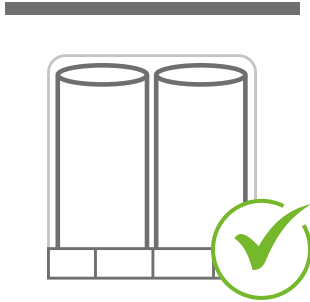
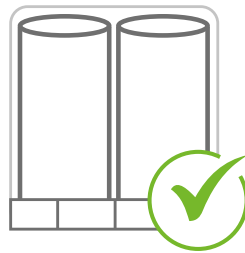


This guide highlights best practice in the storage, handling, and installation of Superglass acoustic insulation products in internal walls and floors.

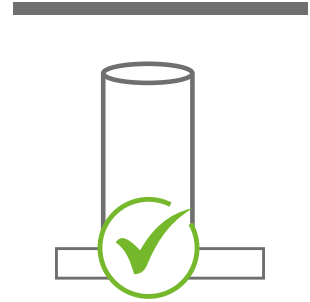
How to store our insulation



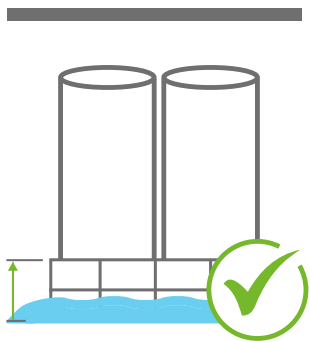
Keep the product covered and fully wrapped on a pallet until required.



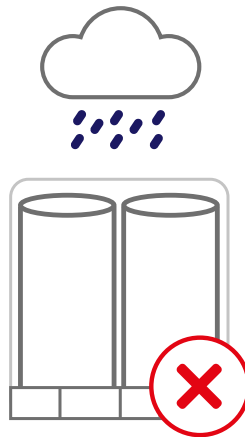
A pallet that is wrapped and has an undamaged hood can be stored outside when indoor space is unavailable, provided it is kept off the ground and protected from the elements. This should only be for short-term storage and not in severe weather conditions.



Once the plastic hood has been removed keep all of the product inside and off the ground away from the elements.



Product should be kept elevated on a pallet at all times to avoid sitting water.



Product can become wet and damaged when exposed to the elements.



Loose product is extremely likely to have water damage when left in the rain rendering your stock unfit for sale.

Please note: This guide is suitable for all Superglass roll, slab and batt products. We do not recommend that Superglass pallets are double stacked.

Health & Safety

“The mechanical effect of fibres in contact with skin may cause temporary itching”



Cover exposed skin. When working in unventilated areas wear disposable face mask.



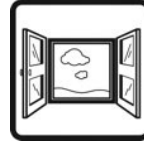
Clean area using vacuum equipment.



Waste should be disposed of according to local regulations.



Rinse in cold water before washing.



Ventilate working area if possible.



Wear goggles when working overhead.

Please refer to product Material Safety Datasheet (MSDS) for more information.

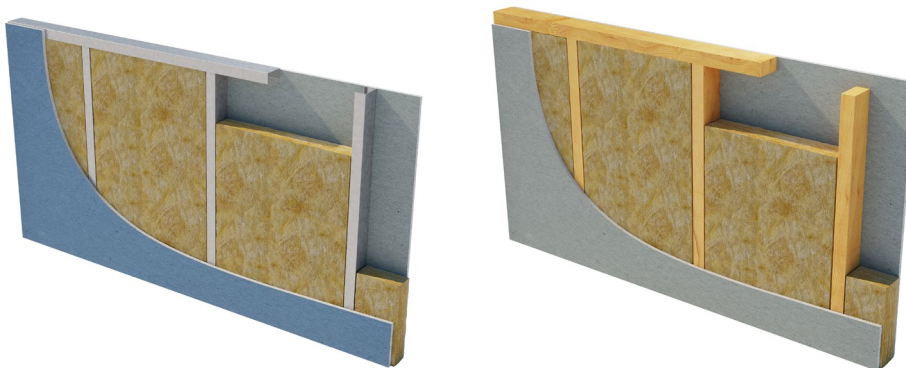
Measuring & cutting

Use an insulation saw or a serrated knife to cut the insulation to size, avoid overcutting.

Installation

The typical installation procedures involve the following steps:

Timber/Metal Stud Internal Partitions



- Install the timber or steel studs in accordance with the manufacturer's instructions. Seal the studwork system, including the sole plates and head plates, against the surrounding structure using a flexible sealant.
- Attach the plasterboard to one side of the partition using either nails or screws.
- Install a minimum 25mm of Superglass acoustic insulation between the studs, placing it against the first layer of plasterboard to ensure complete coverage. You can secure the insulation to the head plate with a screw-fixed timber batten.
- If the Superglass acoustic insulation completely fills the stud void, no additional support is necessary, as the insulation will be self-supporting.
- The other layer of plasterboard is then attached in accordance with the manufacturer's instructions.
- Make sure to seal all joints around the partition and service penetrations with a flexible sealant.

The insulation should not be compressed excessively as the fibres will be damaged leading to a loss of thickness and performance. If damage does occur, replacement material must be installed.

Internal Timber Floors



- Install the floor joists as usual in accordance with the manufacturer's instructions.
- Attach plasterboard to the underside of the joists in accordance with the manufacturer's instructions.
- Place a minimum 100mm of Superglass acoustic insulation between the joists on the plasterboard, making sure the entire area is fully covered.
- Install the floor deck (chipboard, timber boarding etc) in accordance with the manufacturer's instructions.
- Make sure to seal all joints around the floor perimeter and service penetrations with a flexible sealant.

The insulation should not be compressed excessively as the fibres will be damaged leading to a loss of thickness and performance. If damage does occur, replacement material must be installed.

Packaging & Waste Material

Our products and their pallets are wrapped in low-density polyethylene (LDPE4) plastic, which contains a minimum 30% recycled material and is fully recyclable. Before recycling, please consult your local authority for guidance.

Superglass insulation products can be recycled but Superglass do not have the facilities to recycle these products. Therefore, any waste product should be disposed of to landfill in accordance with local waste disposal regulations.

Superglass is proud to be in the loop

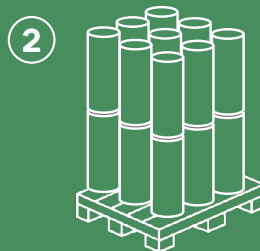
The Pallet LOOP is a sustainable, cost-effective, easy-to-administer system covering pallet design and manufacture, pallet delivery and recovery, and a cash back incentive. Our deliveries of cured glass mineral wool products will be loaded onto LOOP pallets.

The collection process is really simple too, and using the LOOP can dramatically improve your own sustainability credentials, as you'll be helping to contribute to the UK's zero waste and zero carbon aims. **It's a win-win, all round!**

Here's how the recover/repair/reuse cycle works:



LOOP pallets are delivered to Superglass



Our cured glass mineral wool products are loaded onto LOOP pallets and delivered to customers



Once unloaded, pallets can be booked for collection



The Pallet LOOP collects the pallets, and pays you up to £4 per green pallet*



Scan here for our dedicated Pallet Loop page



BSWGROUP member of binderholz

*£4 will be credited to your account for every green LOOP pallet collected in good condition. £2 will be credited for LOOP pallets that require cleaning or are damaged.

Intelligent Environments
Superglass

Etex UK Insulation Ltd | Thistle Industrial Estate | Kerse Road | Stirling | FK7 7QQ | UK

IW&FIG02
May 2025

Technical

Hotline: **0808 1645 134**
Email: technical.stirling@etexgroup.com

Customer Services

Tel: **01786 451170**
Email: customerservice.stirling@etexgroup.com

Social

[superglass_uk](#)
 [superglassuk/](#)
 [superglassinsulationuk](#)

[superglass.co.uk](https://www.superglass.co.uk)

REC-50340 All rights are reserved, including those of photomechanical reproduction and storage in electronic media. Commercial use of the processes and work activities presented in this document is not permitted. Extreme caution was observed when putting together the information, texts, and illustrations in this document. Nevertheless, errors cannot quite be ruled out. The publisher and editors cannot assume legal responsibility or any liability whatever for incorrect information and the consequences thereof. The publisher and editors will be grateful for improvement suggestions and details of errors pointed out. For the most up-to-date document versions and product information, please always refer to the Superglass website or contact the Superglass Technical department.

etex inspiring ways of living