

Product Type: Orifice Flow Control Model: OFCP600

600mm diameter, pre-assembled protected flow control chamber, delivered ready to install. This model has a rotational moulded chamber base with 160mm or 225mm main channel socket connections with a 300mm option on the inlet, as well as two further 110mm, 160mm or 225mm side inlets at 90° and 270° from the outlet at 0°. Only the outlet is pre cut, ready for use, all inlets are provided as blanked ends that can be cut as required.

Application

- Above ground access for inspection and maintenance of surface water pipe systems.
- Suitable for Adoptable and Non-Adoptable applications.
- Maximum installation depth to soffit of pipe - Adoptable 3000mm and Non-Adoptable 3000mm.
- Designed for large housing or commercial developments.

Built to the following standards

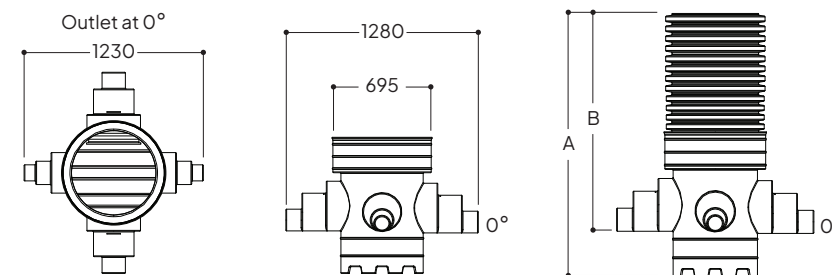
- Design & Construction Guidance (DCG) - Section C7.12
- CIRIA75310.2 - 20.5 Compliance
- BS 8582 - 9.6

Features

- Single piece, pre-assembled chambers.
- Durable rotational moulded LLDPE base - chemical and impact resistant.
- 300mm sump depth.
- Compatible with all UK Twinwall pipe systems.
- Profiled base which improves overall strength.
- Five standard depths available.
- Access shafts are easily cut onsite to the required depth.
- Chambers can be installed in granular backfill.

Quality Assurance

Before leaving our factory, chambers are tested in accordance to required standards.



Model ref.	Main Pipework Connections Ø (mm)	Optional Side Inlets Ø (mm)	Overall Depth A (mm)	Inlet Invert B (mm)	Approx. Weight (kg)
OFCP600/1	160, 225, 300*	110, 160, 225	1075	740	19
OFCP600/1.5	160, 225, 300*	110, 160, 225	1555	1220	30
OFCP600/2	160, 225, 300*	110, 160, 225	1945	1610	39
OFCP600/2.4	160, 225, 300*	110, 160, 225	2335	2000	47
OFCP600/3	160, 225, 300*	110, 160, 225	3005	2670	56

- Chambers over 1000mm soffit depth require our reduction/restriction caps to meet DCG.
- Inlet Invert measurements accurate to main channel socket. This measurement will vary depending on pipework used.
- We provide a range of adaptors to connect to various pipework dimensions and pipework types including Marley Quantum, Polysewer and UltraRib.
- *300mm diameter on main inlet only.

Our BLOK Filter Technology Within The Oriflo Range

We have an alternative 600mm diameter flow control, the **OFCC600B**, that boasts an in-built silt protection system. The alternative protected model features a filter to prevent total suspended solids (TSS) including silt migrating past the filter, protecting the orifice plate and stopping potential blockage.



What information do we need to design your ORIFLO chamber?

We have a large range of flow control chambers allowing us to help tailor your choice to what would be best for your implementation. For this we will require:

- Orifice size
- Pipework sizes and configurations
- Invert depths

If you are unsure on the orifice size, you can use our Oriflo Orifice Size Calculator on our website to calculate what orifice size you would need for your chamber.

www.turtleenviro.co.uk/oriflo-OFCP600/#oriflo-calculator