



ResoMat 15

Product Information & Technical Data Sheet

Resonate ResoMat 15 is a heavy duty acoustic underlay which provides excellent sound reduction in both foot fall noise and airborne sounds such as talking and televisions from rooms above or below.

The 15mm thick ResoMat 15 have minimal impact on the floor build up, making them ideal for rooms with minimal height.

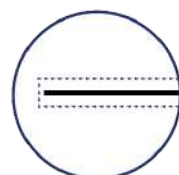
The mats are easy to cut to size using a sharp knife and can be loose laid over the existing floor boards.

ResoMat 15 consists of a high performance cross linked foam resilient layer which is sandwiched between two layers of 7.5 kg/m² mass loaded vinyl. This combination delivers excellent impact and airborne sound performance.

Key Benefits



✓ Excellent impact sound reduction



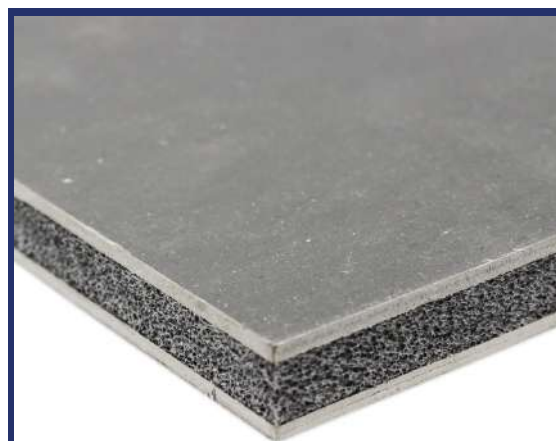
✓ Thin space saving solution only 15mm



✓ High point load capacity

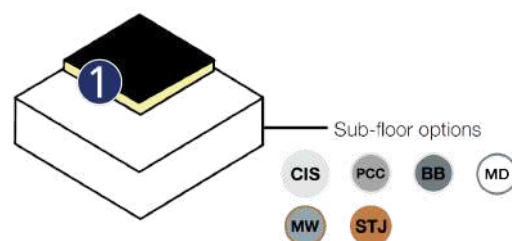


✓ Strong and robust soundproofing material



System Components

1. Resonate ResoMat 15 floor panel



Dimensions

Panel Dimensions

1200mm (W)
1200mm (L)
15mm (H)

Panel m²

1.44 m² per panel

Panels Per Pallet

40 panels / 57.6m²

Pallet Weight

15.5 kg/m²
22.5 kg per sheet

Pallet Dimensions

1200 mm (W)
1200mm (L)
750mm (H)

Pallet Weight

900 kg

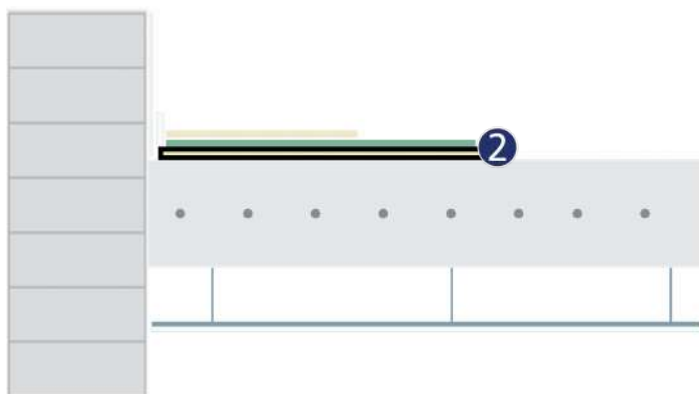
ResoMat 15



Product Applications and Typical Acoustic Performances

Concrete In-situ Floor

CIS



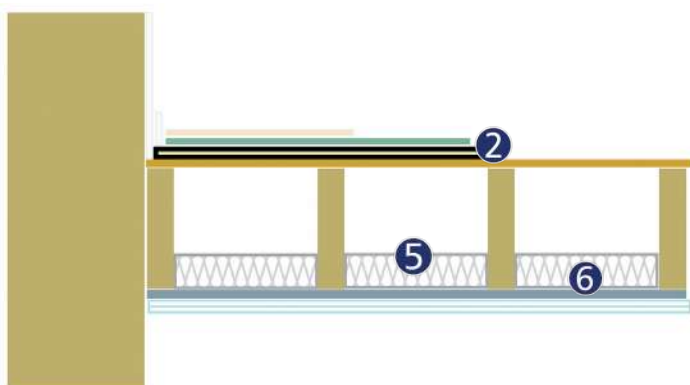
1. Carpet and underlay
2. Resonate **ResoMat 15**
3. 200mm reinforced in-situ concrete slab
4. MF Ceiling (min 100mm void)
5. 1 x 9.5mm acoustic plasterboard

Airborne Sound Performance DnT,w + Ctr	52dB
Impact Sound Performance LnT,W	47dB
Impact Noise Improvement ΔLw	28dB



Solid Timber Joisted Floor

STJ



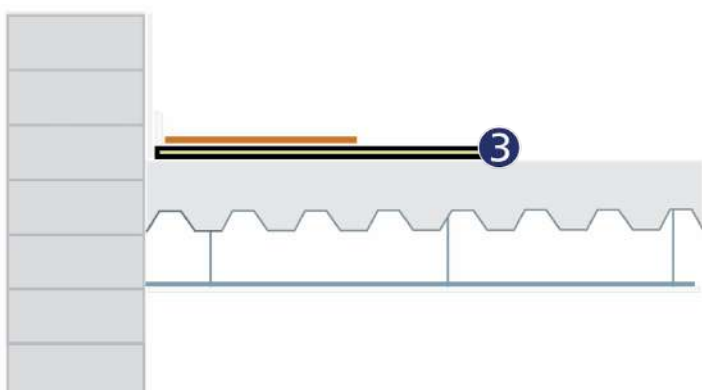
1. Carpet and underlay
2. Resonate **ResoMat 15**
3. 18mm (min) timber sub floor
4. 225 (min) timber floor joists
5. **ResoQuilt** 50mm soundproofing wool
6. 16mm **ResoBar** resilient bars
7. 2 x 15mm acoustic plasterboard

Airborne Sound Performance DnT,w + Ctr	52dB
Impact Sound Performance LnT,W	44dB



Profile Metal Deck Floor

MD



1. Laminate Flooring
2. Adhesive or decoupling layer
3. Resonate **ResoMat 15**
4. 130mm concrete on profiled metal deck
5. MF Ceiling (min 100mm void)
6. 1 x 9.5mm acoustic plasterboard

Airborne Sound Performance DnT,w + Ctr	54dB
Impact Sound Performance LnT,W	40dB

