

ResoMat 8



Product Information & Technical Data Sheet

Resonate ResoMat 8 is a heavy duty acoustic underlay which provides excellent sound reduction from foot fall noise and also helps to reduce airborne sounds such as talking and televisions from rooms above or below.

Being only 12mm thick, ResoMat 8 has minimal impact on the floor build up and is ideal when replacing existing carpet underlay. The mats are easy to cut to size using a sharp knife and can be loose laid over the existing floor boards.

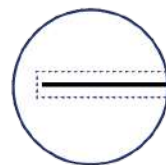
ResoMat 8 consists of a high performance cross linked foam resilient layer, which is bonded to a sheet of 7.5 kg/m² mass loaded vinyl.

For optimum performance lay the mats foam side up when laying a 'soft floor' covering such as carpet, and foam side down if a 'hard floor' finish such as wooden / laminate are to be installed.

Key Benefits



✓ Excellent impact sound reduction



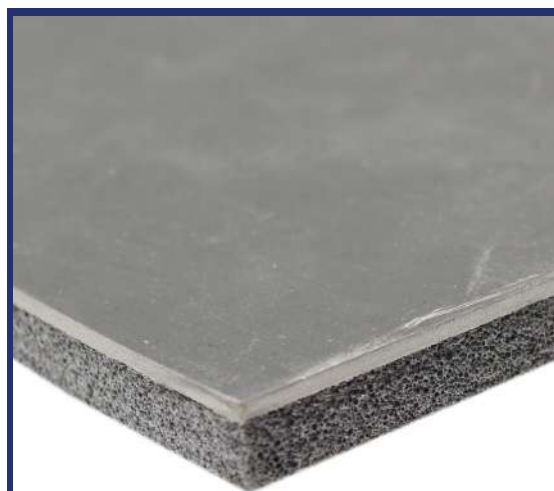
✓ Thin space saving solution only 12mm



✓ High point load capacity

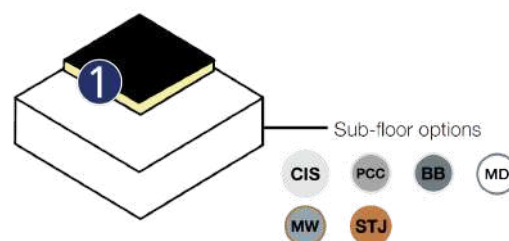


✓ Strong and robust soundproofing material



System Components

1. Resonate ResoMat 8 floor panel



Dimensions

Panel Dimensions

1200mm (W)
1200mm (L)
12mm (H)

Panel m²

1.44 m² per panel

Panels Per Pallet

75 panels / 108 m²

Pallet Weight

8kg/m²
11.5 kg per sheet

Pallet Dimensions

1200 mm (W)
1200mm (L)
1050mm (H)

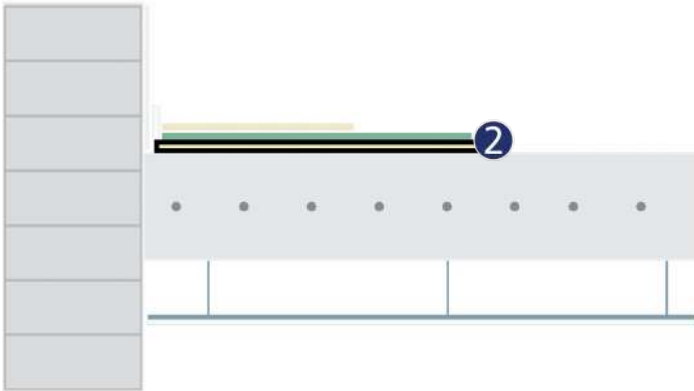
Pallet Weight

900 kg

Product Applications and Typical Acoustic Performances

Concrete In-situ Floor

CIS



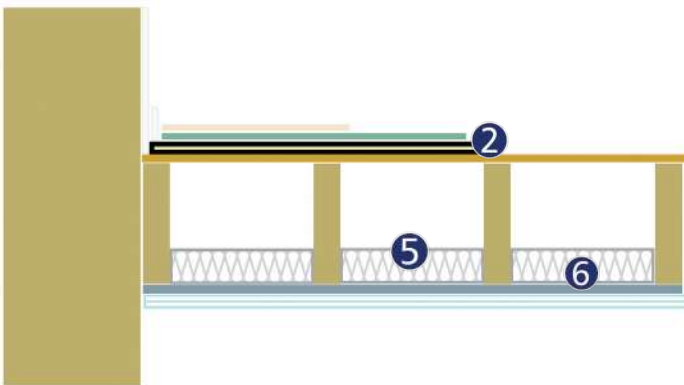
1. Carpet and underlay
2. Resonate ResoMat 8
3. 200mm reinforced in-situ concrete slab
4. MF Ceiling (min 100mm void)
5. 1 x 9.5mm acoustic plasterboard

| | |
|--|------|
| Airborne Sound Performance DnT,w + Ctr | 50dB |
| Impact Sound Performance LnT,W | 48dB |
| Impact Noise Improvement ΔLw | 27dB |



Solid Timber Joisted Floor

STJ



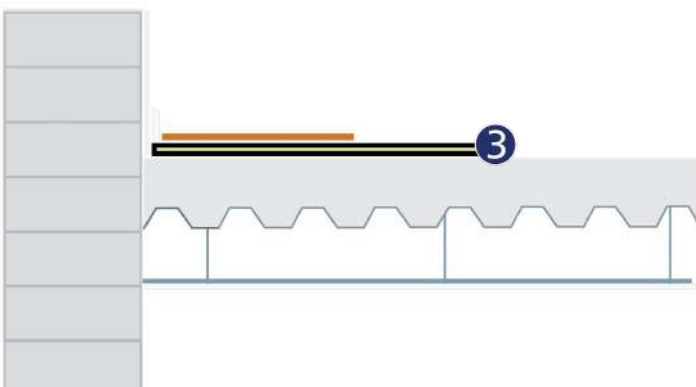
1. Carpet and underlay
2. Resonate ResoMat 8
3. 18mm (min) timber sub floor
4. 225 (min) timber floor joists
5. ResoQuit 50mm soundproofing wool
6. 16mm ResoBar resilient bars
7. 2 x 15mm acoustic plasterboard

| | |
|--|------|
| Airborne Sound Performance DnT,w + Ctr | 47dB |
| Impact Sound Performance LnT,W | 46dB |



Profile Metal Deck Floor

MD



1. Laminate Flooring
2. Adhesive or decoupling layer
3. Resonate ResoMat 8
4. 130mm concrete on profiled metal deck
5. MF Ceiling (min 100mm void)
6. 1 x 9.5mm acoustic plasterboard

| | |
|--|------|
| Airborne Sound Performance DnT,w + Ctr | 52dB |
| Impact Sound Performance LnT,W | 42dB |

