

Model: SS300160

OVERVIEW

The Siltguard range is designed for the catchment and removal of silt and debris from runoff generated by impermeable and hard standing surface areas, such as roofs, paths, driveways, patios, car parks, roads, and highways. Installing a Siltguard as part of a Sustainable Drainage Systems (SuDS) design will provide effective primary treatment for surface water runoff, improving water quality downstream and enhancing the sustainability of downstream attenuation systems.

APPLICATION

The SS300160 model is intended for installation upstream of smaller volume cellular/crate attenuation systems.

DESCRIPTION

This unit features a 300mm diameter, factory-built design that is delivered ready for installation. It includes a robust, impact-resistant rotationally moulded base with four moulded pipe spigots that accommodate both Ø110mm and Ø160mm pipe fittings, along with two additional 110mm side inlet spigot connections. All spigots have blind ends that can be cut off on-site if needed.

The unit is equipped with an integral filter basket featuring an alloy filter screen. This design slows the flow and helps remove larger silt particles in suspension while also capturing debris, such as leaves. The filter basket includes an ergonomically designed telescopic stainless steel handle for easier lifting.

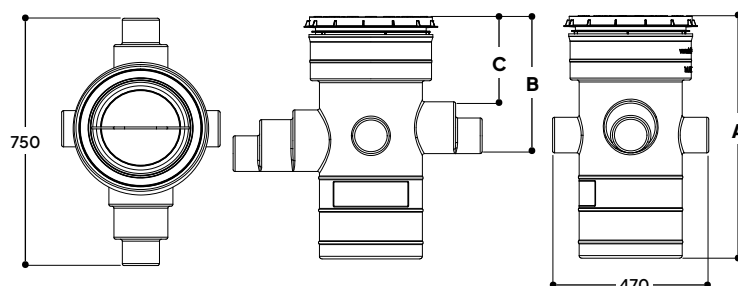
As standard, this unit comes with a circular EN 124 - A15 load access cover with a screw-down lid. Additionally, there are two other square access covers available, both with a clear opening of 300 mm x 300 mm. Please see the opposite page for more details.

FEATURES

- Single piece unit, delivered ready to install, reducing installation time and costs.
- Rota Moulded LLDPE base chemical and impact resistant.
- Quick and easy installation.
- Robust, chemical resistant - rota moulded body.
- Option of Ø110 or Ø160mm pipe connections
- 300mm sump depth.
- Removable filter basket with an ergonomically designed telescopic lifting handle.
- Filter basket has an alloy filter screen fitted, providing more efficient separation.
- Basket full - 18kg, allowing a single person lift.
- Simple maintenance.
- Can be installed in granular surround.



SPECIFICATION



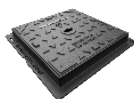
Product Code	Main pipework Ø	Side inlets Ø	Depth A mm	Inlet invert B mm	Cover Depth C mm	Approx Weight kg
SS300160	110-160	110	749	419	269	9

OPTIONS



300ER

Extension riser plus seal to increase invert depth. Each riser offers an effective height of 135mm



300 ACSB125W

EN 124 - B125 load 300x300mm clear opening - square section - Ductile iron access cover.