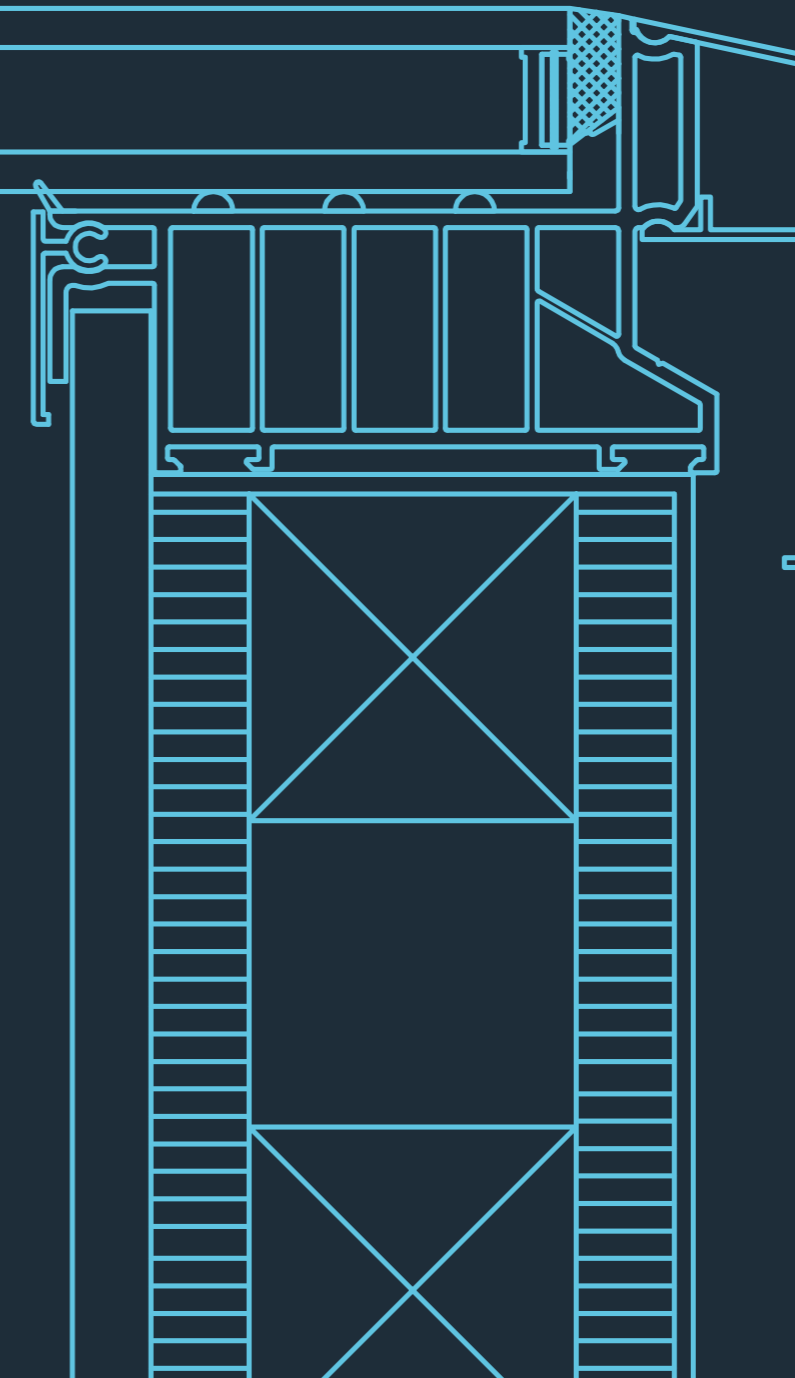


**FLAT ROOFLIGHT
INSTALLATION MANUAL**



**FLAT ROOFLIGHT
INSTALLATION MANUAL**

ATLAS

MORE SKY LESS ROOF™

www.atlasroofsolutions.co.uk

sales@atlasroofsolutions.co.uk

02838 327741

PART OF THE CUSTOMADE GROUP

ATLAS

MORE SKY LESS ROOF™

TOOLS YOU'LL NEED:



Sealant

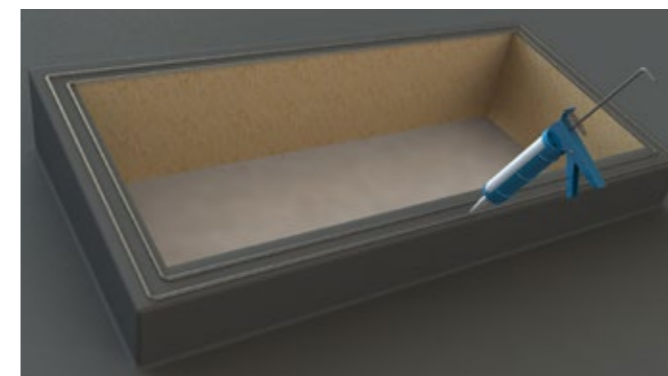
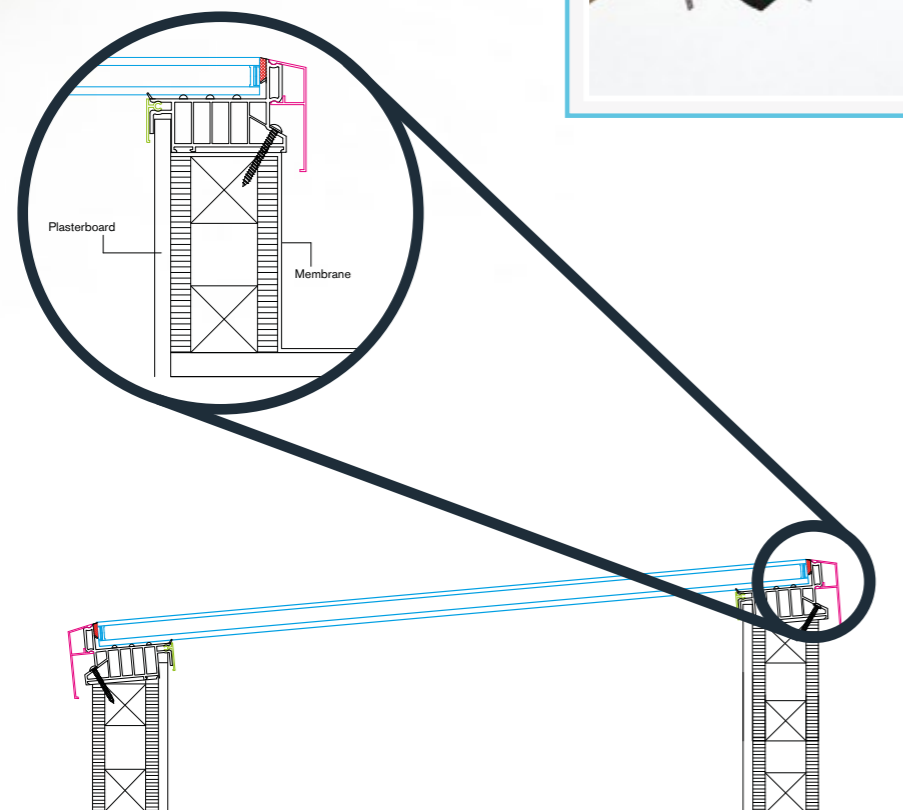
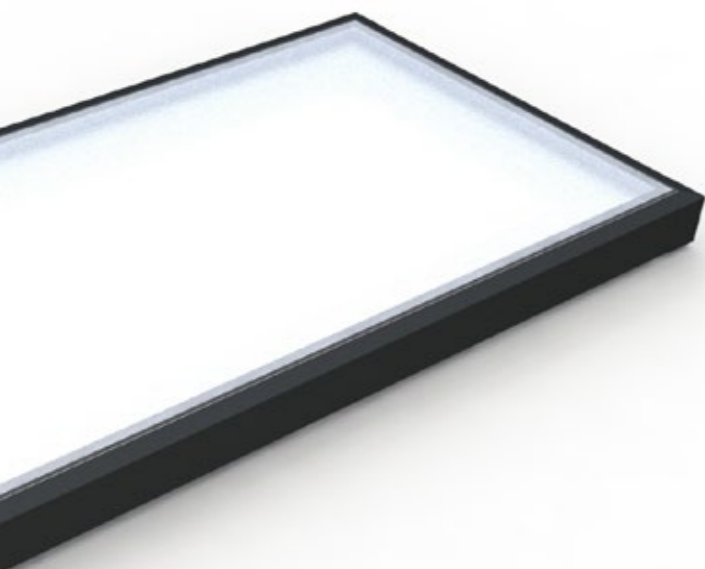
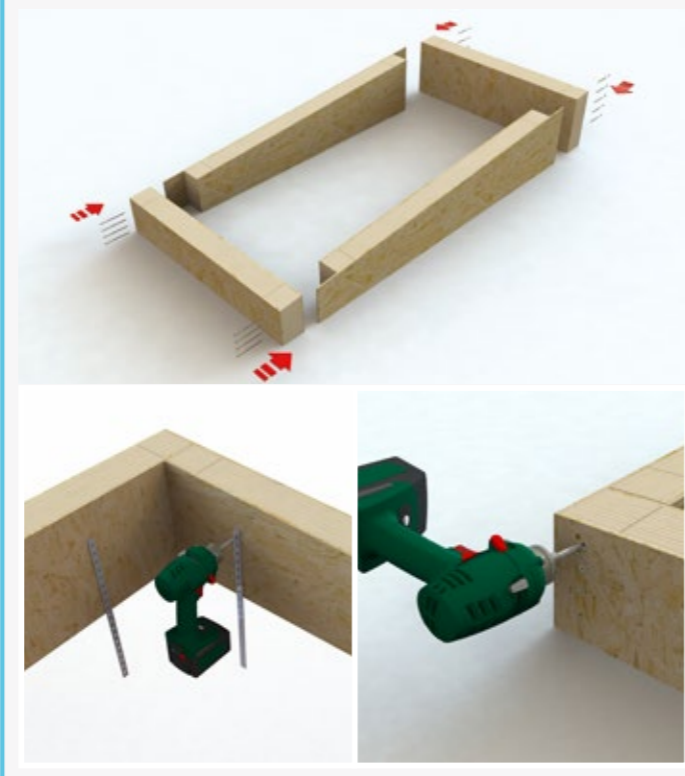


Battery Driver

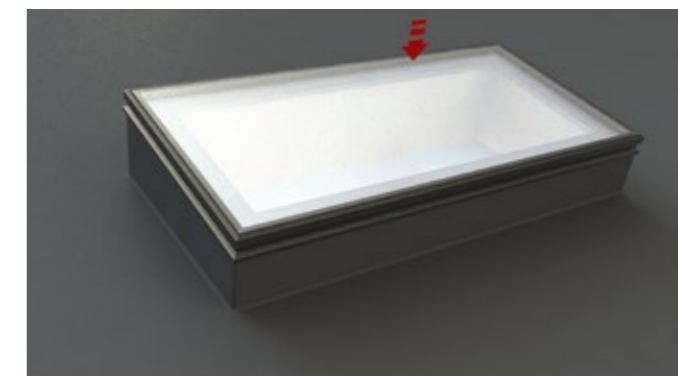


Rubber Mallet

If an Atlas kerb is specified, assemble the kit and fix to the flat roof deck. Secure the Atlas kerb to the host structure using appropriate steel fixing straps (not supplied). Cover the flat roof and kerb with an appropriate weatherproof membrane. If not using an Atlas kerb, we recommend installing the roof at a minimum 5 degree pitch.



1 Run a continuous bead of sealant around the perimeter of the kerb for the frame to sit on.



2 Position the Flat Rooflight onto the kerb. Make sure it's central to achieve an even distance around the kerb.



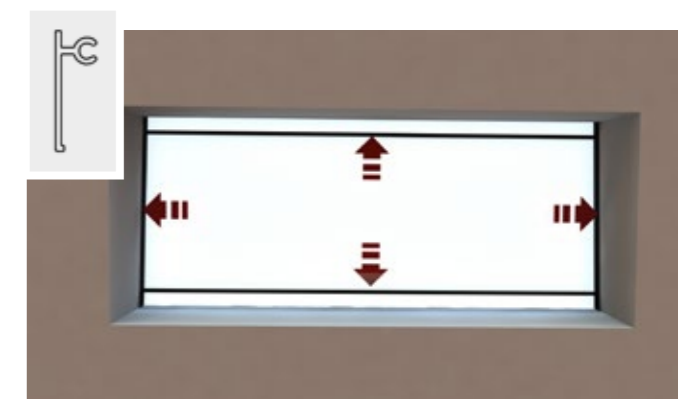
3 Screw the Rooflight onto the kerb using appropriate fixings. Secure it 150mm from the ends and 250mm centres.



4 Fit external cladding positioning centrally. A rubber mallet may be required.



5 Fit the corner trims by hooking them under the external claddings and rotating them over, clipping them into place.



6 After the internal plasterboard is fitted, tap the internal cover trims into the frame using a rubber hammer. Note: Fit the two opposite trims that are the internal size of the frame first and then fit the remaining two trims between them.