

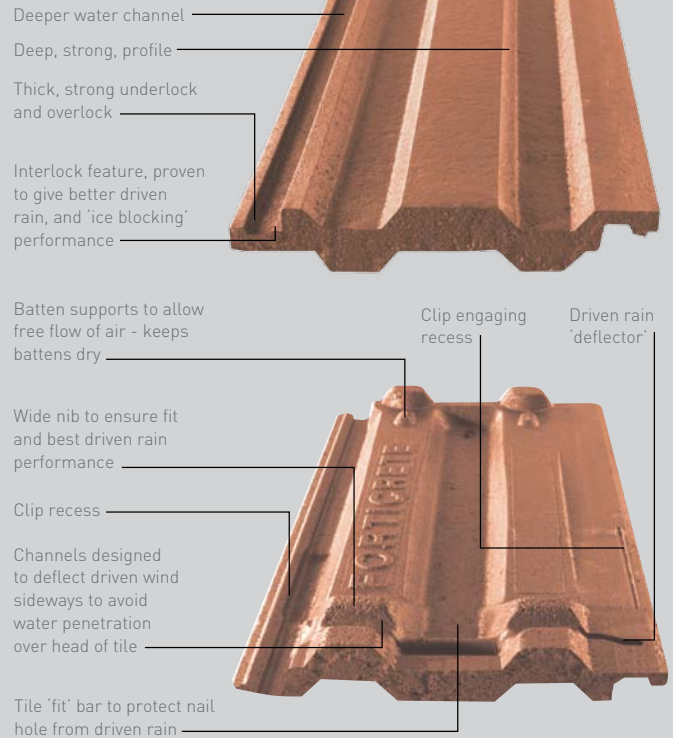


## Evolution creates a revolution in roof tile design

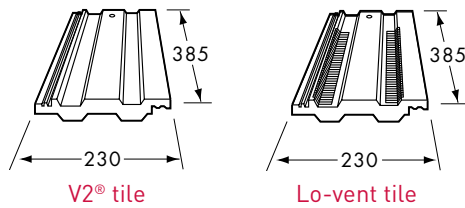
V2 Autumn, Doctor's surgery  
in Ilford, Essex.

- Proven in tests to be one of the strongest tiles of its type
- Interlock feature, proven to give better driven rain, and 'ice blocking' performance
- Batten supports to allow free flow of air – keeps battens dry
- Available in 5 smooth colours and 2 granular colours
- Kitemarked to BS EN 490
- 60 year integrity guarantee
- Available via local stockists
- Banded and packed for easier handling and improved Health & Safety

### V2® features



## V2<sup>®</sup> specifications



Type	Pitch	Min Headlap	Max batten spacing	Batten required	Tiles required	Mass (approx)
Smooth	17.5° - 70°	75mm	310mm	3.22 lin m/m <sup>2</sup>	16.1/m <sup>2</sup>	45 kg/m <sup>2</sup>
Granular	22.5°	75mm	310mm	3.22 lin m/m <sup>2</sup>	16.1/m <sup>2</sup>	45 kg/m <sup>2</sup>

**Batten size:** 38mm x 25mm for spans up to 450mm; 50mm x 25mm for spans from 450mm up to 600mm in accordance with BS 5534:2003.

**Fixing:** Aluminium Nail 50mm x 3.35mm or Acetal Clip with 50mm Nail and verge clip.

**Tile Designation:** T-EN 490-IL-12-RF-200-/-/365-2,85w

### Guarantee

The colour of V2<sup>®</sup> will change with natural weathering, but the integrity of the tile carries a 60-year guarantee from date of supply, subject to the company's normal terms. Forticrete Roofing Products' policy is one of continuous improvement and the Company reserves the right to change specifications and designs at any time without notice.

Where an exact colour match is critical, you are advised to view actual tile samples.

### Working procedures, safety & general precautions

Tiles should be fixed in accordance with BS 5534:2003. Forticrete recommend that fixers of all slates and tiles regard the products as fragile as stated in BS8000:Pt6:1990 Section 5. During installation of the products, the correct setting out and working procedures should be employed to avoid walking directly on to products which have been fixed or are on any completed area of a roof. Should it be necessary to gain access via the roof where battens of adequate strength cannot be used as footholds, this should not be attempted without the use of adequate protection to the tiles or slates including the required number of crawling boards, ladders and cat ladders.

Please note that where there is a change of pitch, packing may be required between crawling boards, cat ladders and the surface of the tiles or slates to avoid damage to the product.

Fixers should note that Forticrete do not recommend the practice of cutting tiles or slates in-situ.

Other information can be obtained from the Health and Safety in Roof Work publication HSG33 and in the 'Working on Roofs' publication INDG284. Reference should also be made to the Forticrete Technical Literature and Fixing Instructions.

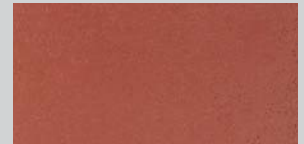
## V2<sup>®</sup> colour range



Autumn



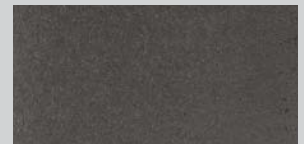
Brown



Red



Rustic



Slate Grey

**Note: Brown and Red are also available with a granular finish.**

Order your **V2<sup>®</sup>** from:

### Roofing Systems

#### & Technical enquiries:

Forticrete Limited,  
Boss Avenue, off Grovebury Road,  
Leighton Buzzard, Beds LU7 4SD

**Tel: 01525 244900**

Fax: 01525 850432

E-mail: [roofing@forticrete.com](mailto:roofing@forticrete.com)

Information on the complete range of Forticrete products can be found on the Internet at [www.forticrete.co.uk](http://www.forticrete.co.uk)

Forticrete, V2, Ecotile and the E device are registered trademarks of Forticrete Ltd.

CRH is a registered trademark of CRH plc.

The information contained within this publication is as accurate as possible at the time of going to press. However, this document does not form part of any contract and Forticrete cannot accept liability for any errors or omissions.

In order to maintain its position as a market leader, Forticrete operates a policy of continuous product development and therefore reserves the right to alter specifications without notice.

© Forticrete Ltd. 2010.

**Forticrete<sup>®</sup> roofing**  
Redefining traditional products



**Mixed Sources**  
Product group from well-managed forests, controlled sources and recycled wood or fibre  
[www.fsc.org](http://www.fsc.org) Cert no. 17-COC-002619  
©1996 Forest Stewardship Council

Approved stockist