




Building integrated duct systems




Residential ventilation	1
Circular duct systems	2
Hoods, grilles and transitions	3
Dampers	4
Silencers	5
Valves and Grilles	6
InCapsa	7
InDomo	8
Access doors	9
Accessories	10
Air handling units	11
Index	12
	13
	14
	15
	16
	17
	18


Content


Manifold box	
	MCU..... 252
	MRU..... 254
	MLU..... 255
	MHU..... 256
	MCWU..... 258

Plenum box floor	
	PGFU..... 259


Plenum box wall/ceiling	
	PGWU..... 261
	PVWU..... 263
	PVCU..... 265


Accessories	
	FIKS..... 266


Sliding damper	
	SKG..... 262

Transition piece	
	RCFU..... 263

Coupling	
	NPU..... 264

Bend	
	BU90..... 265

Semiflexible duct	
	LFPE..... 267

Circular straight low-built	See chapter Silencers
	KVDP..... 151
	LRCB..... 150

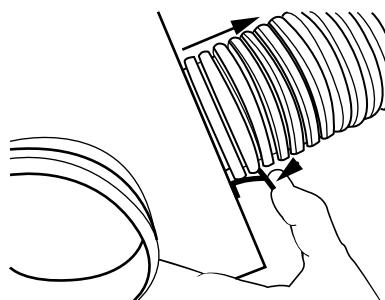
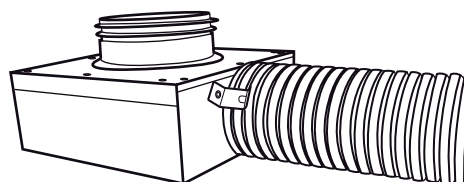
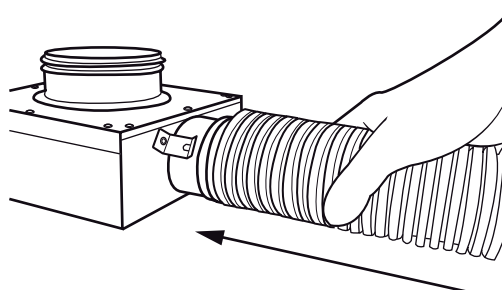
A system of products, suitable for integration or embedment in buildings. All circular connections are with gaskets according to Lindab Safe, which fulfills the toughest demands for air tightness. Spiral seamed steel ducts as well as semiflexible ducts can be connected with high safety against undesired leakage.

Minimal measures of the products means flexibility in construction and installation. Should other solutions occur, they can be ordered specially.

Low levels of noise are ensured with our specially developed silencers, also suitable to be integrated in buildings.

These products, together with other Lindab products as dampers, silencers, valves and grilles, gives you a complete high quality system for residential ventilation.

All manifolds and plenum boxes have a Smart Lock function which allows a semiflexible duct to be fastened to the connections. Use the transition piece RCFU, with a clip for Smart Lock function, when connecting LFPE 76/90 to manifolds and plenum boxes.



Manifold

MCU



Description

The manifold can be used for both supply and exhaust air. It is available in several types and dimensions.

The manifolds are designed for floor installation but can be used at other locations as well.

All types have couplings with Lindab safe sealings for connections of SR spiral-seamed ducts or semiflexible ducts LFPE. Use the transition piece RCFU, with Smart Lock function, to connect the LFPE 76/90-dimension to InDomo manifolds and plenum boxes with Ø80 mm couplings.

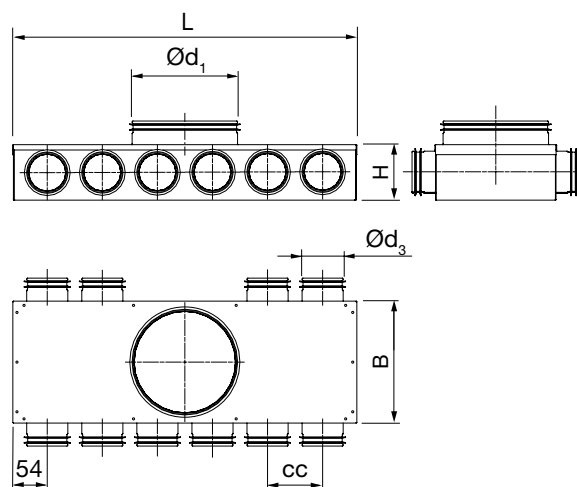
Boxes with Ø 76 couplings with Lindab safe sealings is intended for direct connection of the semiflexible duct LFPE 76/90. It is not intended for SR spiral-seamed duct.

The Smart Lock function allows you to fasten LFPE effortlessly to the Safe couplings.

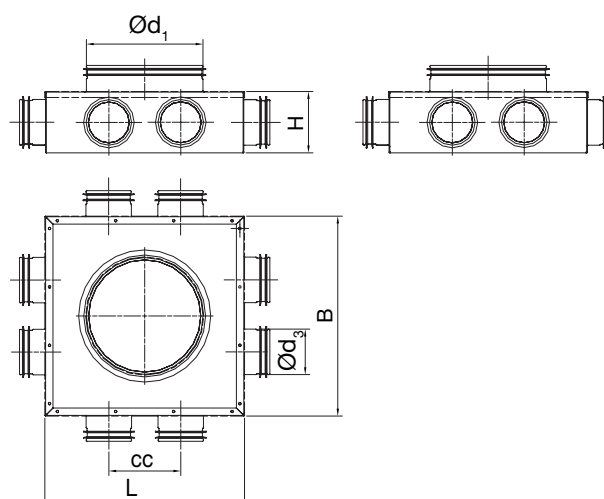
Two turnable anchor plates, placed on the bottom of the manifold, can be used for fixation.

Fulfills air tightness class D.

Dimensions

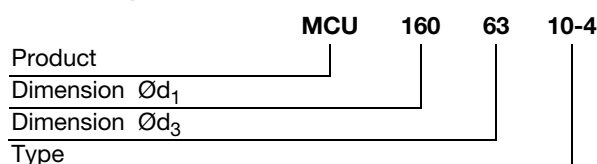


MCU 160 63 8, 160 80-8, 200 80-8



Ød ₁ nom	Ød ₃ nom	Type	L mm	B mm	H mm	cc mm	m kg
125	63	6-0	520	185	88	83	2,30
160	63	6-4	520	185	88	83	2,30
160	63	8	275	275	88	98	1,80
160	63	10-4	852	185	88	83	3,40
160	76	6-0	622	185	108	100	2,41
160	76	8	275	275	108	115	1,76
160	76	8-0	822	185	108	100	3,08
160	80	6-0	622	185	108	100	2,41
160	80	8	275	275	108	115	1,76
160	80	8-0	822	185	108	100	3,08
200	76	8	275	275	108	115	1,75
200	76	10-0	1022	221	108	100	4,19
200	80	8	275	275	108	115	1,75
200	80	10-0	1022	221	108	100	4,19

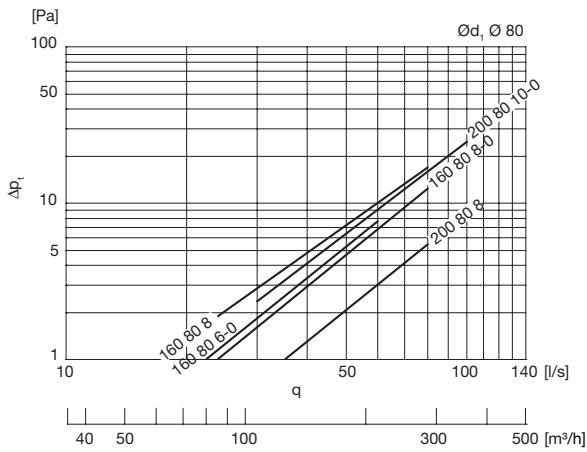
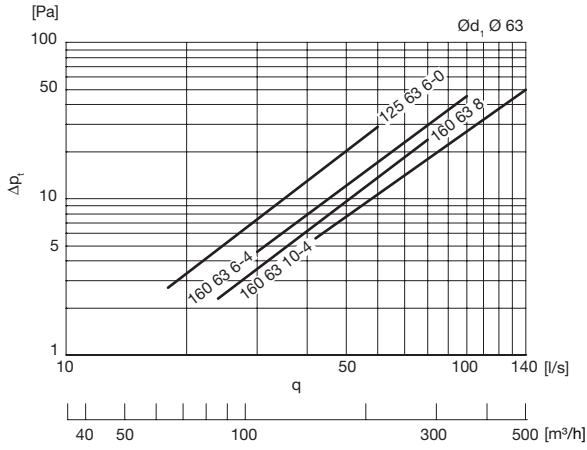
Ordering example



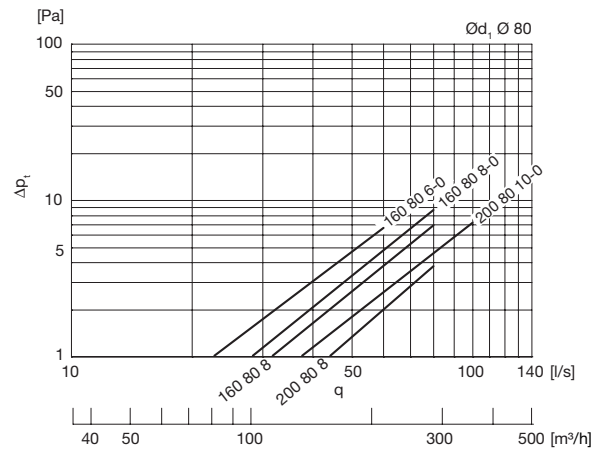
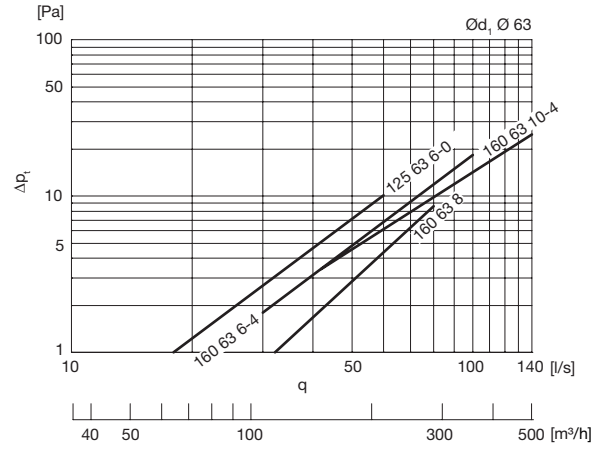
Manifold

Technical data

Supply



Exhaust



- 1
- 2
- 3
- 4
- 5
- 6
- 7
- 8
- 9
- 10
- 11
- 12
- 13
- 14
- 15
- 16
- 17
- 18

Manifold

MRU

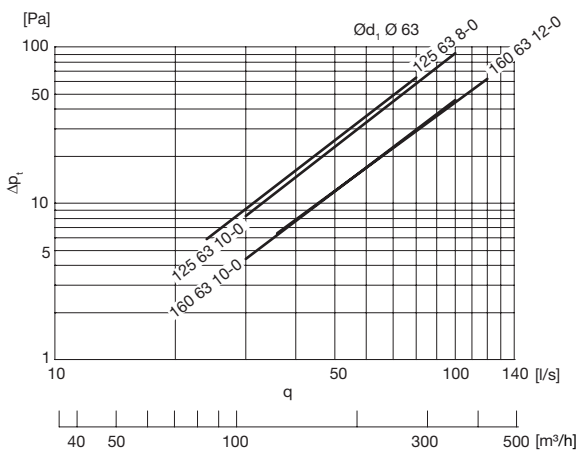


Description

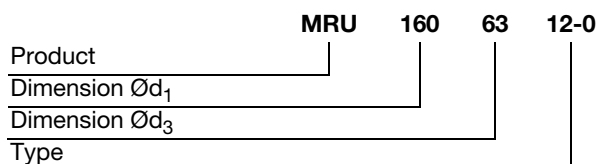
The manifold can be used for both supply and exhaust air. It is available in several types and dimensions. All types have $\text{\O} 63$ mm studs with Lindab Safe sealings for connections of either SR 63 spiral-seamed ducts or semiflexible ducts LFPE. The manifold is designed for floor installation but can be used everywhere, also in the ceiling for example. The Smart lock function allows you to fasten semiflexible ducts effortlessly to the $\text{\O} 63$ connections. Two turnable anchor plates, placed on the bottom of the manifold, can be used for fixation. Fulfills air tightness class D.

Technical data

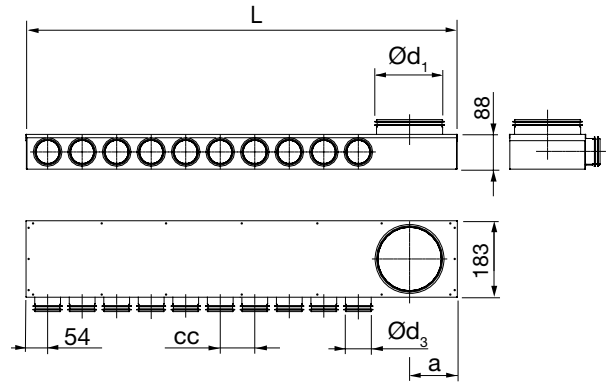
Supply



Ordering example

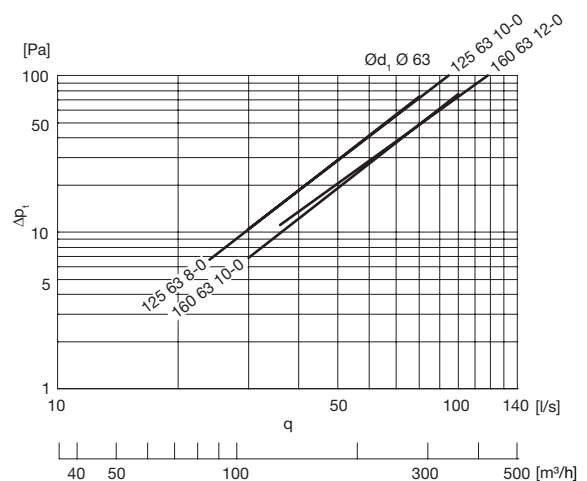


Dimensions



$\text{\O}d_1$ nom	$\text{\O}d_3$ nom	Type	L mm	cc mm	a mm	m kg
125	63	8-0	888	93	85	3,20
125	63	10-0	1072	93	85	3,90
160	63	10-0	1173	98	102	3,85
160	63	12-0	1293	93	102	4,50

Exhaust



Manifold

MLU

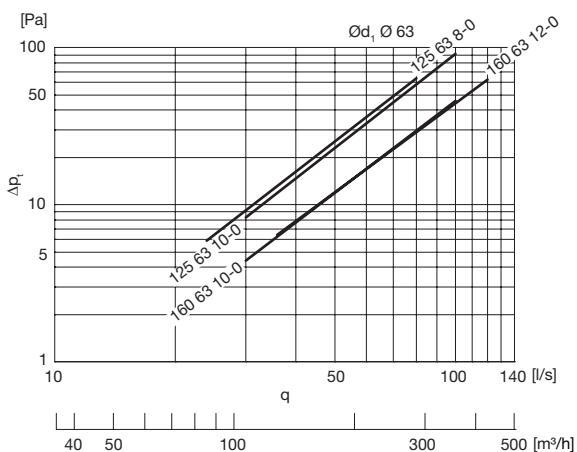


Description

The manifold can be used for both supply and exhaust air. It is available in several types and dimensions. All types have Ø 63 mm studs with Lindab Safe sealings for connections of either SR 63 spiral-seamed ducts or semiflexible ducts LFPE. The manifold is designed for floor installation but can be used everywhere, also in the ceiling for example. The Smart lock function allows you to fasten semiflexible ducts effortlessly to the Ø 63 connections. Two turnable anchor plates, placed on the bottom of the manifold, can be used for fixation. Fulfills air tightness class D.

Technical data

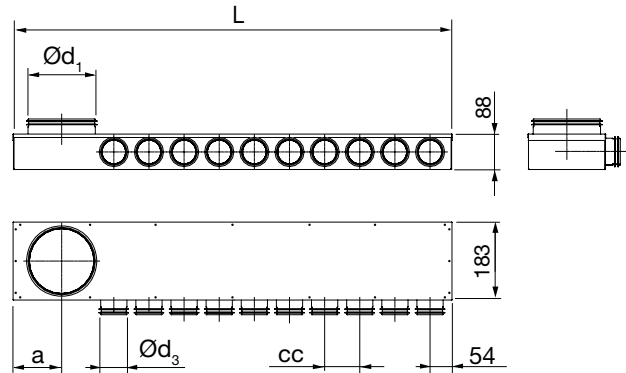
Supply



Ordering example

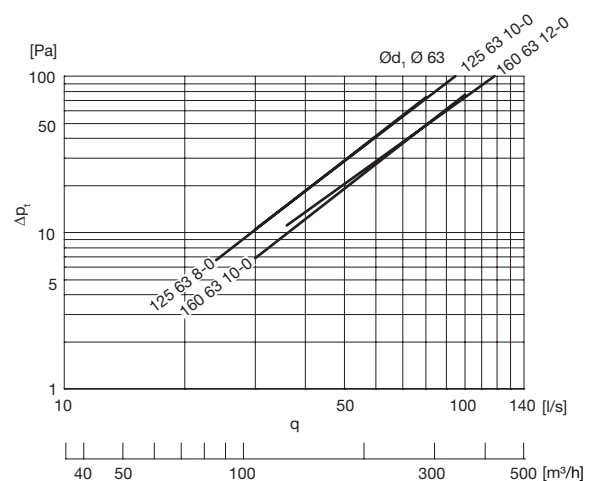
Product	MLU	125	63	8-0
Dimension Ød ₁				
Dimension Ød ₃				
Type				

Dimensions



Ød ₁ nom	Ød ₃ nom	Type	L mm	cc mm	a mm	m kg
125	63	8-0	888	93	85	3,20
125	63	10-0	1072	93	85	3,90
160	63	10-0	1173	98	102	3,85
160	63	12-0	1293	93	102	4,50

Exhaust



Manifold

MHU



Description

The manifold can be used for both supply and exhaust air. It is available in several types and dimensions.

The manifolds are designed for floor installation but can be used at other locations as well.

All types have couplings with Lindab safe sealings for connections of SR spiral-seamed ducts or semiflexible ducts LFPE. Use the transition piece RCFU, with Smart Lock function, to connect the LFPE 76/90-dimension to InDomo manifolds and plenum boxes with Ø80 mm couplings.

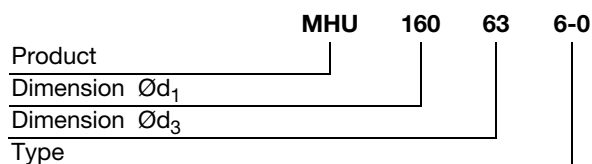
Boxes with Ø 76 couplings with Lindab safe sealings is intended for direct connection of the semiflexible duct LFPE 76/90. It is not intended for SR spiral-seamed duct.

The Smart Lock function allows you to fasten LFPE effortlessly to the Safe couplings.

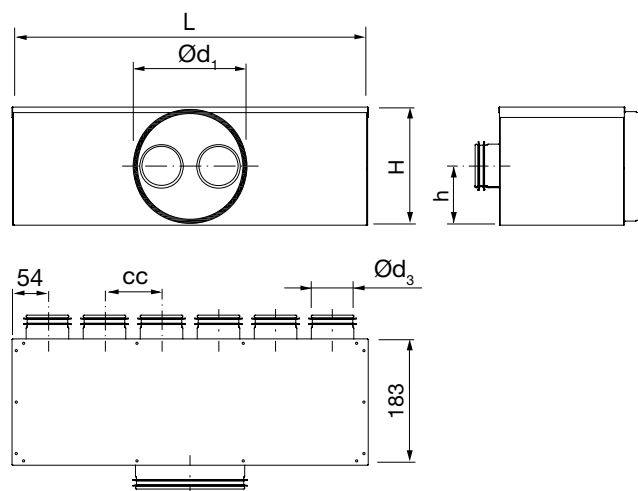
Two turnable anchor plates, placed on the bottom of the manifold, can be used for fixation.

Fulfills air tightness class D.

Ordering example



Dimensions

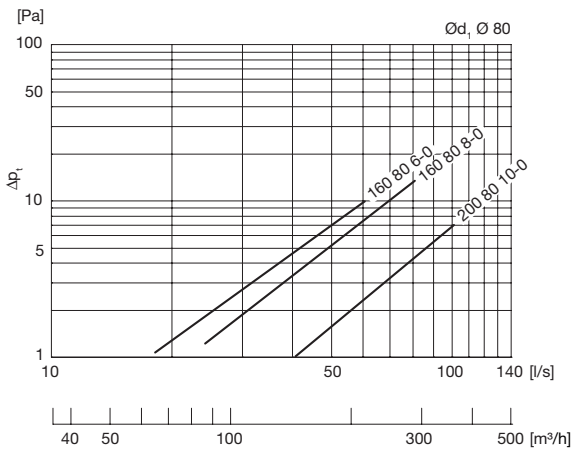
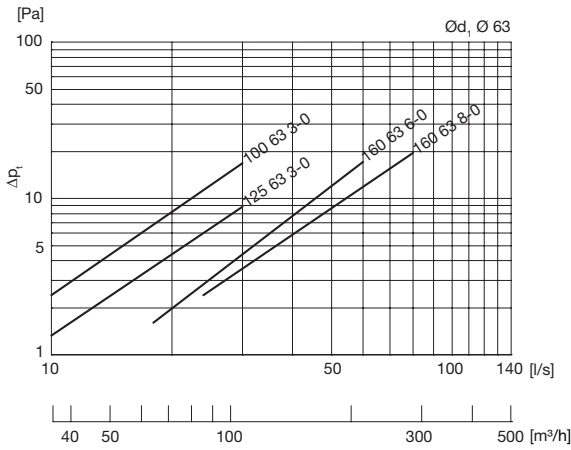


Ød ₁ nom	Ød ₃ nom	Type	L mm	H mm	h mm	cc mm	m kg
100	63	3-0	270	138	85	83	1,50
125	63	3-0	270	138	85	83	1,40
160	63	6-0	518	173	85	83	2,80
160	63	8-0	685	173	85	83	3,30
160	76	6-0	620	173	85	100	3,00
160	76	8-0	820	173	85	100	4,00
160	80	6-0	620	173	85	100	3,00
160	80	8-0	820	173	85	100	4,00
200	76	10-0	1020	213	105	100	5,00
200	80	10-0	1020	213	105	100	5,00

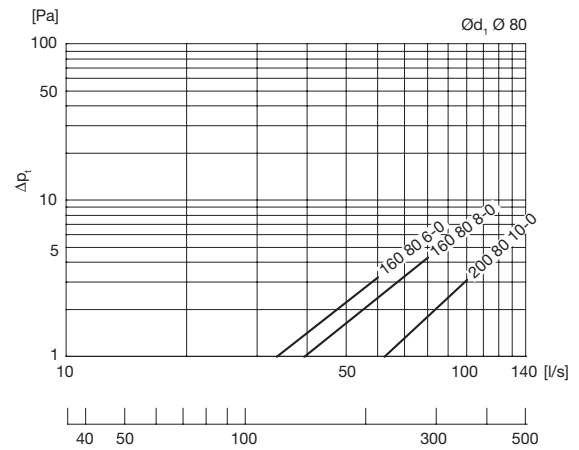
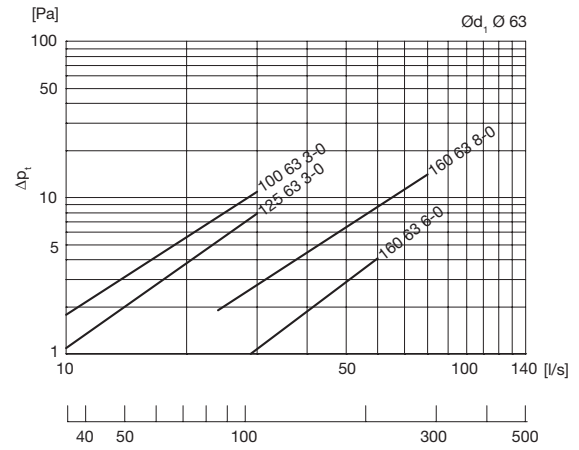
Manifold

Technical data

Supply



Exhaust



- 1
- 2
- 3
- 4
- 5
- 6
- 7
- 8
- 9
- 10
- 11
- 12
- 13
- 14
- 15
- 16
- 17
- 18

Manifold

MCWU



Description

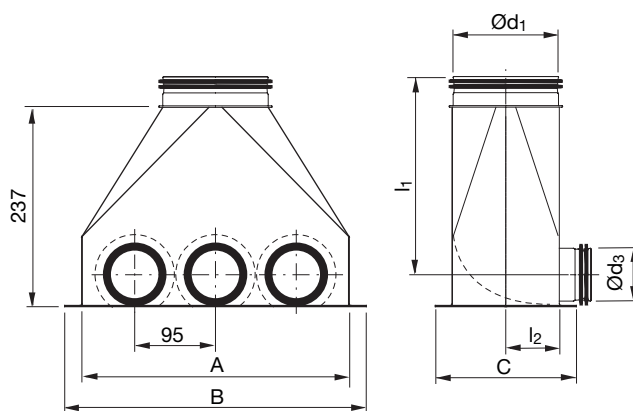
Manifold to connect vertical ducts to the horizontal ducts in the casting-in screed.

Can be used for exhaust air as well as for supply air. The internal pressure drop is minimized due to the internal turning vane.

Easy to clean in connection with T-piece and cover (TCPU+EPF), which gives access to the duct system up to the air handling unit.

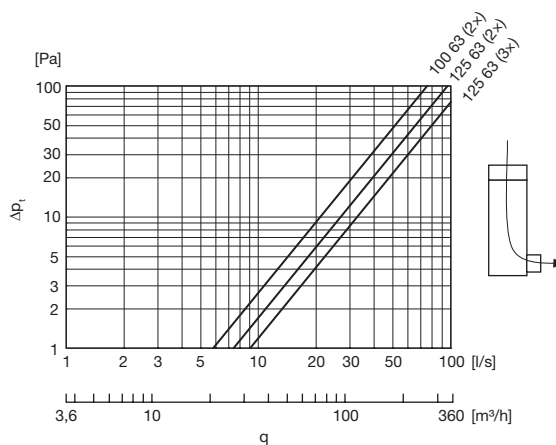
The Smart lock function allows you to fasten semiflexible ducts LFPE effortlessly to the Ø 63 connections. Fulfills air tightness class D.

Dimensions

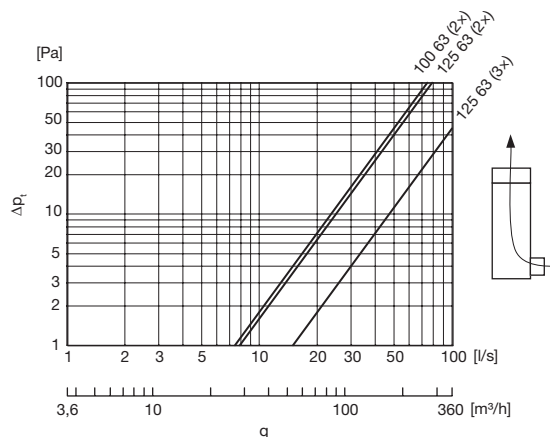


Ød ₁ nom	Ød ₃ nom	Stubs pcs	l ₁ mm	l ₂ mm	A mm	B mm	C mm	m kg
100	63	2	199	53	205	250	150	0,99
125	63	2	199	64	205	250	173	1,11
125	63	3	199	64	295	340	173	1,52

Distribution (supply air)



Accumulation (exhaust air)



Ordering example

Product	MCWU	100	63	2
Dimension Ød ₁				
Dimension Ød ₃				
Number of Ø 63 in-/outlets				

Plenum box floor

PGFU



Description

The plenum box is intended for supply and exhaust air.

It is intended to accommodate grille B3020, which can be supplied with the regulating damper GAT or sliding damper SKG.

It is designed for wall installation but can be used at other locations as well. It is telescopic for flexibility at installation.

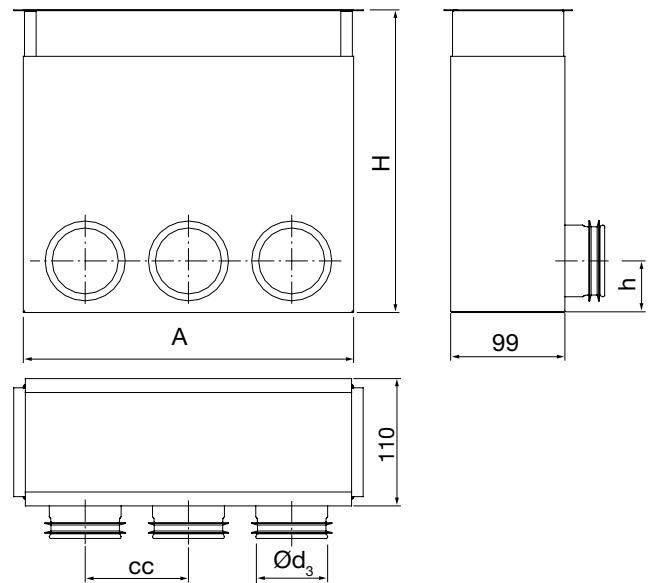
All types have couplings with Lindab safe sealings for connections of SR spiral-seamed ducts or semiflexible ducts LFPE. Use the transition piece RCFU, with Smart Lock function, to connect the LFPE 76/90-dimension to InDomo manifolds and plenum boxes with Ø80 mm couplings.

Boxes with Ø 76 couplings with Lindab safe sealings is intended for direct connection of the semiflexible duct LFPE 76/90. It is not intended for SR spiral-seamed duct.

The Smart Lock function allows you to fasten LFPE effortlessly to the Safe couplings.

The shown pressure drop is for the box including grille B3020 and regulating sliding damper GAT set in open position.

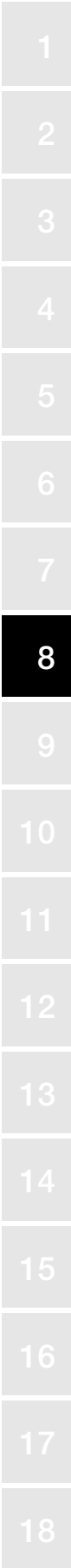
Dimensions



Dimen- sion	Ød ₃ nom	# of Ø63/80	A mm	H mm	h mm	cc mm	m kg
2010	63	2	184	200-345	44	92	1,10
3010	63	3	285	200-345	44	89	1,50
2010	76	1	184	200-345	56	-	1,00
3010	76	1	285	200-345	56	-	1,50
3010	76	2	285	200-345	56	126	1,50
2010	80	1	184	200-345	56	-	1,00
3010	80	1	285	200-345	56	-	1,50
3010	80	2	285	200-345	56	126	1,50

Ordering example

	PGFU	2010	63	2
Product				
Dimension Ød				
Dimension Ød ₃				
Number of Ø 63/80 in-/outlets				

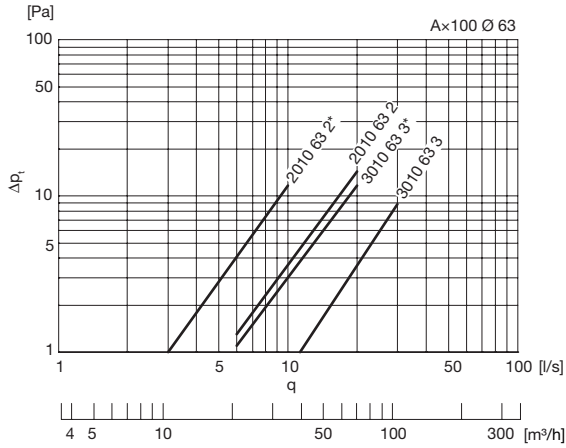


Plenum box floor

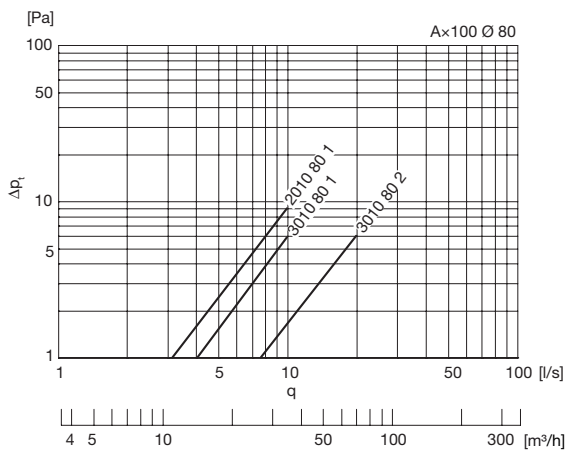
PGFU

Technical data

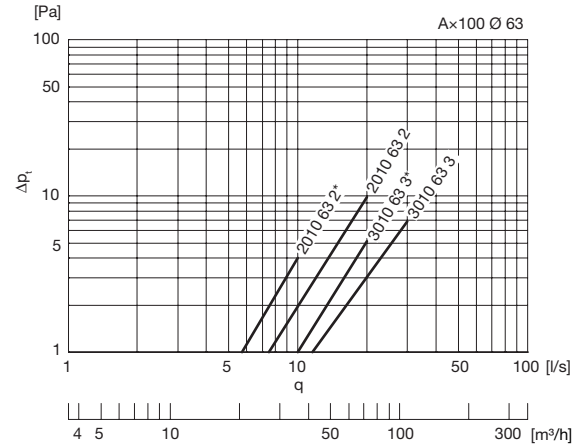
Supply



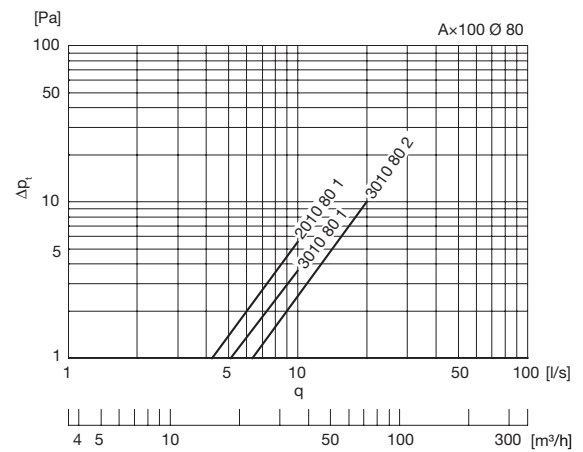
* One of the Ø 63 is capped.



Exhaust



* One of the Ø 63 is capped.

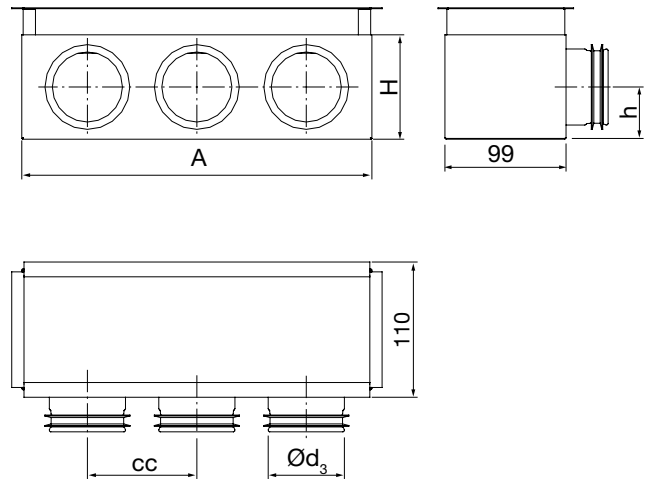


Plenum box wall

PGWU



Dimensions



Description

The plenum box is intended for supply and exhaust air.

It is intended to accommodate sliding damper SKG.

It is designed for wall installation but can be used at other locations as well. It is telescopic for flexibility at installation.

All types have couplings with Lindab safe sealings for connections of SR spiral-seamed ducts or semiflexible ducts LFPE. Use the transition piece RCFU, with Smart Lock function, to connect the LFPE 76/90-dimension to InDomo manifolds and plenum boxes with Ø80 mm couplings.

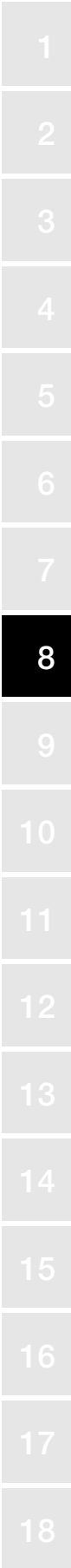
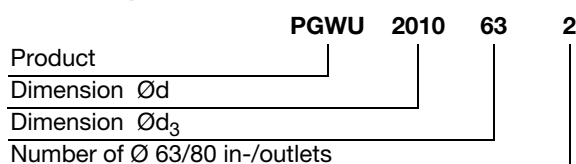
Boxes with Ø 76 couplings with Lindab safe sealings is intended for direct connection of the semiflexible duct LFPE 76/90. It is not intended for SR spiral-seamed duct.

The Smart Lock function allows you to fasten LFPE effortlessly to the Safe couplings.

The shown pressure drop is for the box including grille B3020 and regulating sliding damper SKG set in open position.

Dimension	Ød ₃ nom	# of Ø63/80	A mm	H mm	h mm	cc mm	m kg
2010	63	2	187	85-110	43	92	0,50
3010	63	3	285	85-110	43	89	0,70
2010	76	1	187	105-125	53	-	0,56
3010	76	1	285	105-125	53	-	0,75
3010	76	2	285	105-125	53	126	0,78
2010	80	1	187	105-125	53	-	0,56
3010	80	1	285	105-125	53	-	0,75
3010	80	2	285	105-125	53	126	0,78

Ordering example

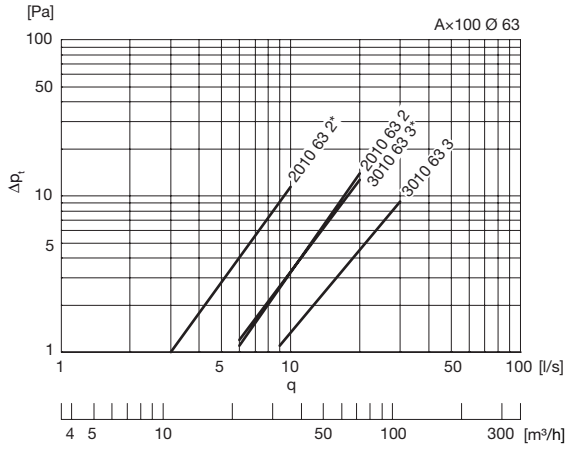


Plenum box wall

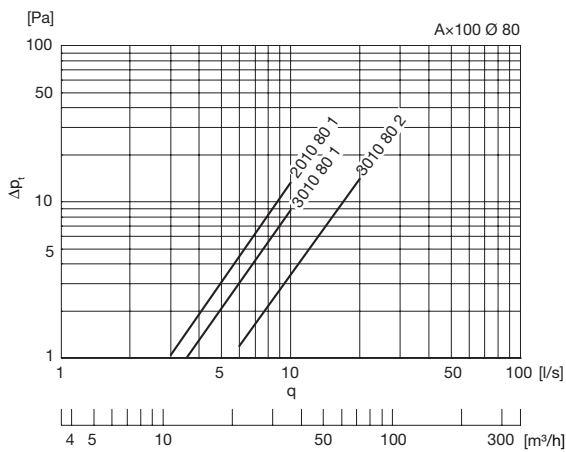
PGWU

Technical data

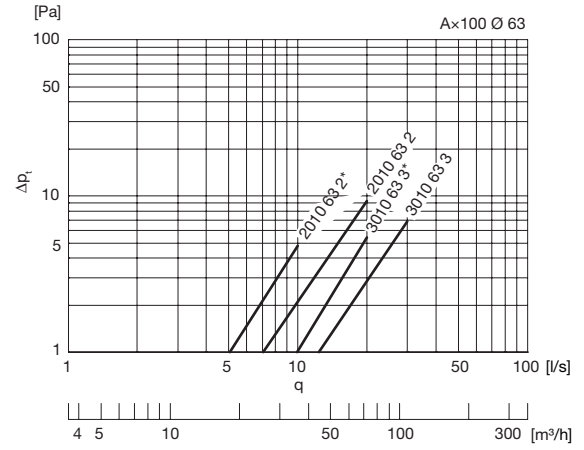
Supply



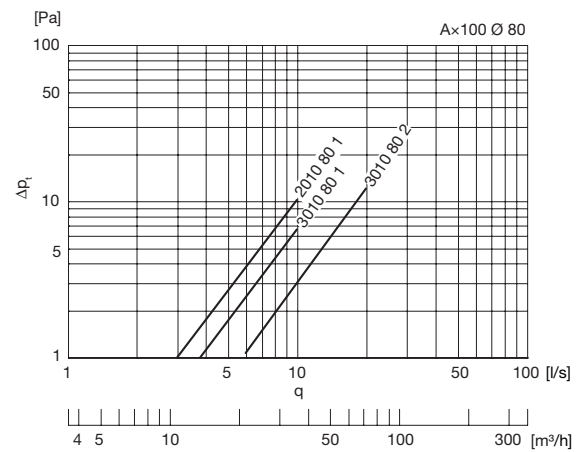
* One of the Ø 63 is capped.



Exhaust



* One of the Ø 63 is capped.



Plenum box wall

PVWU



Description

The plenum box is intended for supply and exhaust air.

It is intended to accommodate a damper.

It is designed for wall installation but can be used at other locations as well.

All types have couplings with Lindab safe sealings for connections of SR spiral-seamed ducts or semiflexible ducts LFPE. Use the transition piece RCFU, with Smart Lock function, to connect the LFPE 76/90-dimension to InDomo manifolds and plenum boxes with Ø80 mm couplings.

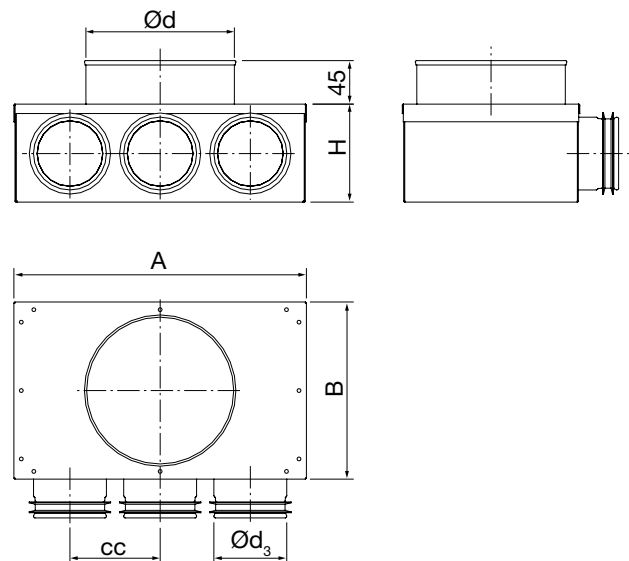
Boxes with Ø 76 couplings with Lindab safe sealings is intended for direct connection of the semiflexible duct LFPE 76/90. It is not intended for SR spiral-seamed duct.

The Smart Lock function allows you to fasten LFPE effortlessly to the Safe couplings.

Fulfills the requirements of air tightness class D.

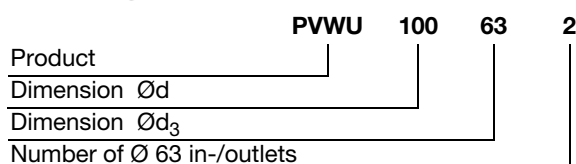
The shown pressure drop is for the box alone, which means that the pressure drop for the valve has to be added.

Dimensions



Ød nom	Ød ₃ nom	# of Ø63	A mm	B mm	H mm	cc mm	m kg
100	63	2	174	126	85	78	0,59
100	76	1	174	126	103	-	0,57
100	80	1	174	126	103	-	0,57
125	63	3	249	151	85	78	0,84
125	76	1	249	151	103	-	0,80
125	76	2	249	151	103	126	0,84
125	80	1	249	151	103	-	0,80
125	80	2	249	151	103	126	0,84

Ordering example



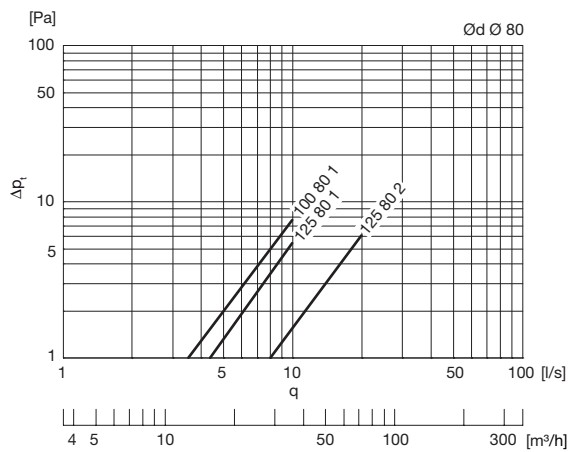
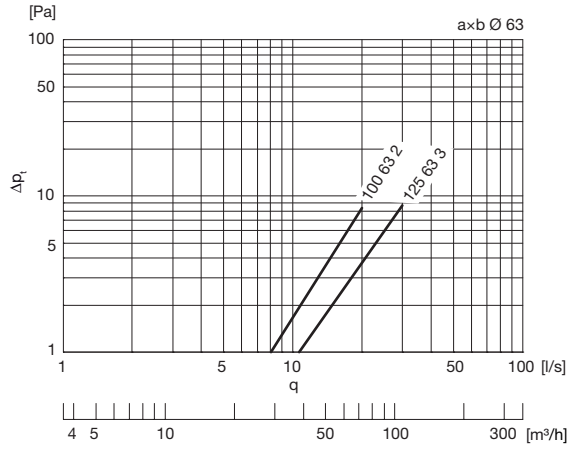
- 1
- 2
- 3
- 4
- 5
- 6
- 7
- 8
- 9
- 10
- 11
- 12
- 13
- 14
- 15
- 16
- 17
- 18

Plenum box wall

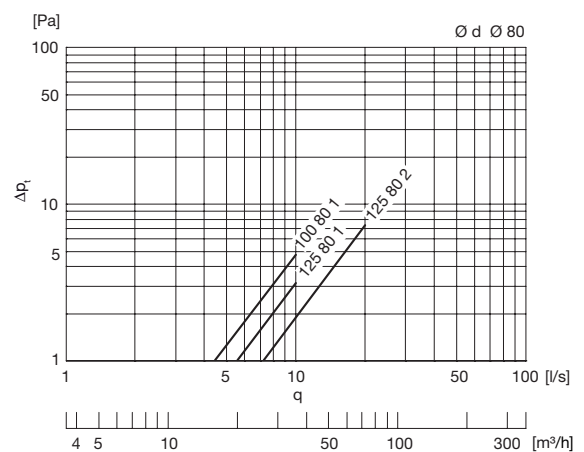
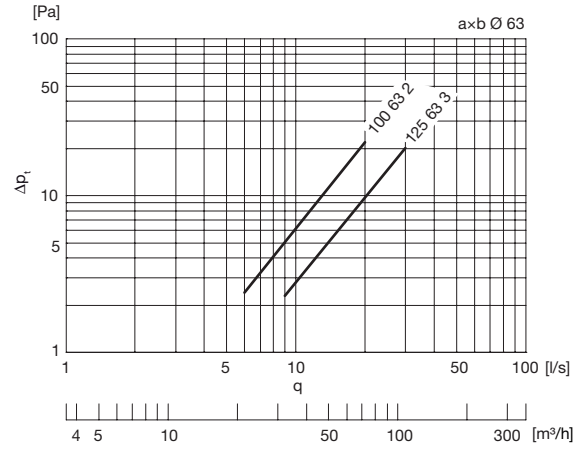
PWWU

Technical data

Supply



Exhaust



Plenum box

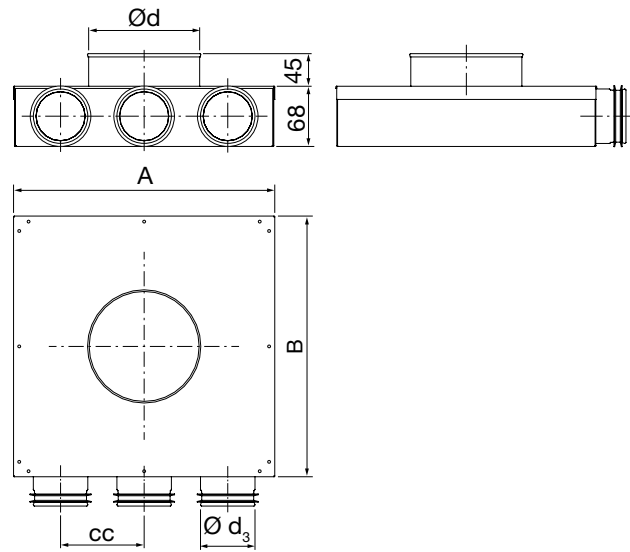
PVCU



Description

The plenum box is intended for supply and exhaust air. It is intended to accommodate a valve. It is designed for ceiling installation but can be used at other locations as well. All types have $\varnothing 63$ mm studs with Lindab Safe sealings for connections of either SR 63 spiral-seamed duct or semiflexible duct LFPE. Each $\varnothing 63$ connection is equipped with a clip to hold the semiflexible duct LFPE – Smart lock function. Fulfills the requirements for air tightness class D. The shown pressure drop is for the box alone, which means that the pressure drop for the valve has to be added.

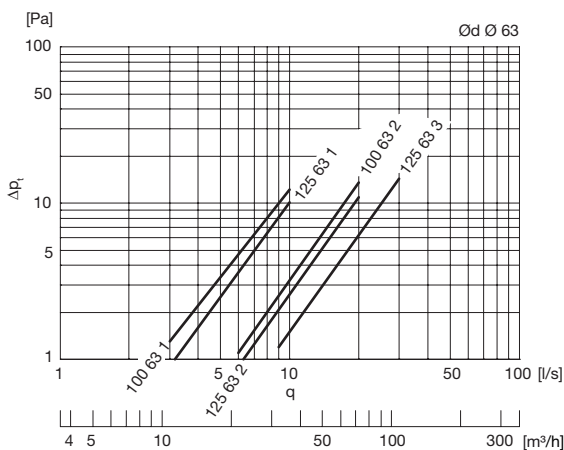
Dimensions



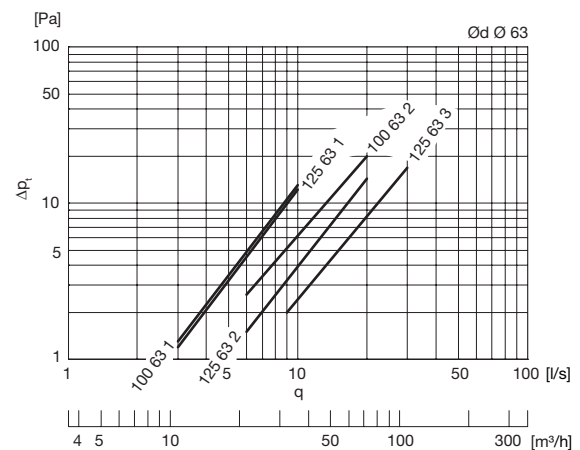
$\varnothing d$ nom	$\varnothing d_3$ nom	# of $\varnothing 63$	A mm	B mm	cc mm	m kg
100	63	1	184	184	95	0,66
100	63	2	206	206	95	0,80
125	63	1	184	184	95	0,66
125	63	2	206	206	95	0,80
125	63	3	297	297	95	1,36

Technical data

Supply



Exhaust



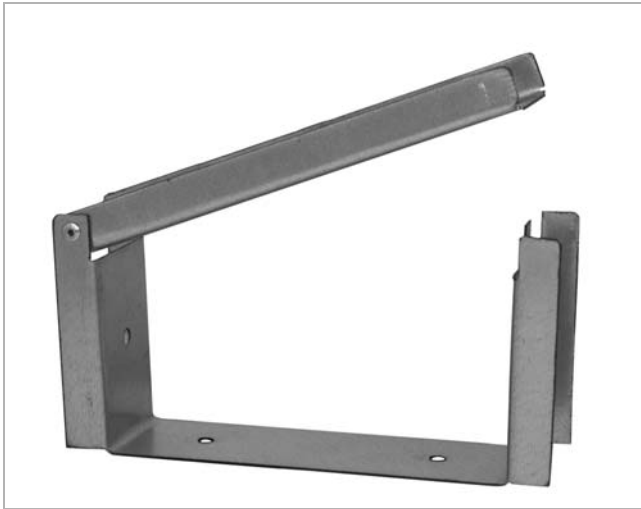
Ordering example

	PVCU	100	63	2
Product				
Dimension $\varnothing d_1$				
Dimension $\varnothing d_3$				
Number of $\varnothing 63$ in-/outlets				

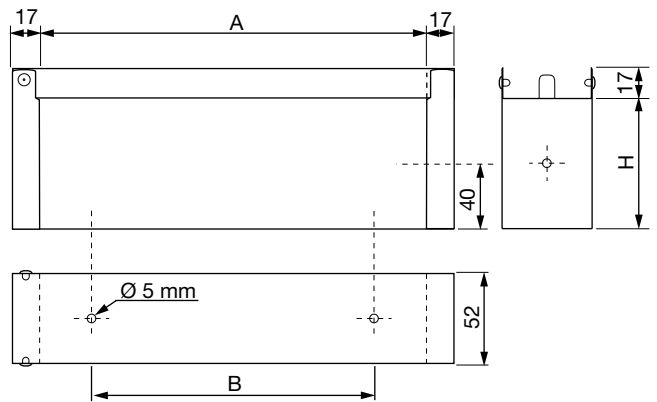
- 1
- 2
- 3
- 4
- 5
- 6
- 7
- 8
- 9
- 10
- 11
- 12
- 13
- 14
- 15
- 16
- 17
- 18

Clamping bracket

FIKS



Dimensions



Description

The clamping brackets FIKS are used for fixation of ducts in connection with mounting or embedment into the floor. There are two sizes for 2 and 3 ducts, respectively.

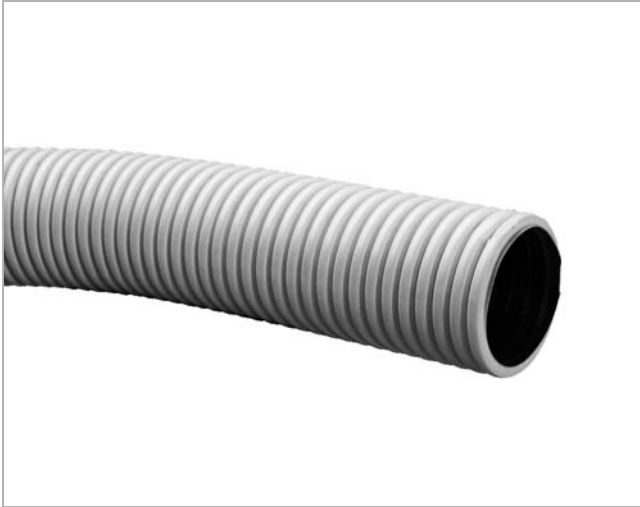
Type	A mm	B mm	H mm	Weight kg
FIKS 63 2	150	90	73	0,20
FIKS 63 3	250	165	73	0,30
FIKS 76 2	187	221	91	0,23
FIKS 76 3	280	314	91	0,29

Ordering example

Product **FIKS 63**
 Number of ducts **3**

Semiflexible duct

LFPE



Description

Has a corrugated outside and a smooth inner surface. Made of odorless polyethylene (PE) without and recycled material.

Inner duct with antistatic additives and has microbial properties according to EN ISO 846 A.

Ring stiffness $\geq 8 \text{ kN/m}^2$ according to EN ISO 9969. Can be bent to a radius of minimum 150 mm.

Dimension 63 fits Lindab Safe $\varnothing 63 \text{ mm}$.
Dimension 80 fits Lindab Safe $\varnothing 80 \text{ mm}$. Use the transition piece RCFU, with Smart Lock function, to connect the LFPE 76/90-dimension to InDomo manifolds and plenum boxes. The smart lock function allows you to fasten LFPE effortlessly

Outside/inside color: White

Delivered in coils of 50 m.

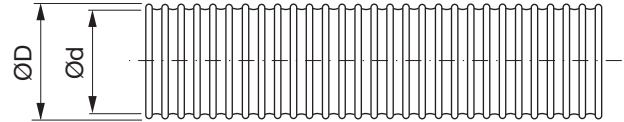
Minimum installation and use temperature: $-5 \text{ }^\circ\text{C}$

Maximum installation and use temperature: $+60 \text{ }^\circ\text{C}$

Ordering example

Product	LFPE	63
Dimension $\varnothing d$		

Dimensions



$\varnothing d$ nom	$\varnothing D$ mm	l mm	m kg/m
63	75	50000	0,25
76	90	50000	0,35

1

2

3

4

5

6

7

8

9

10

11

12

13

14

15

16

17

18

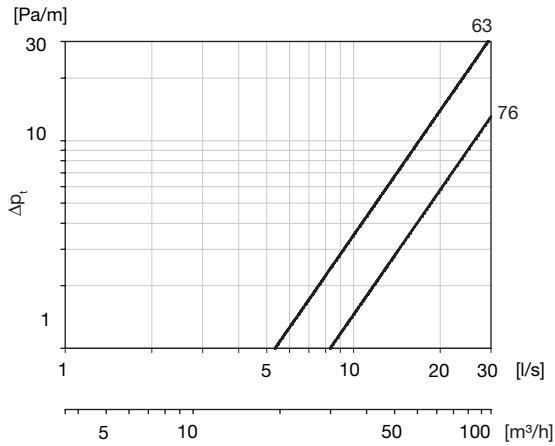
Semiflexible duct

LFPE

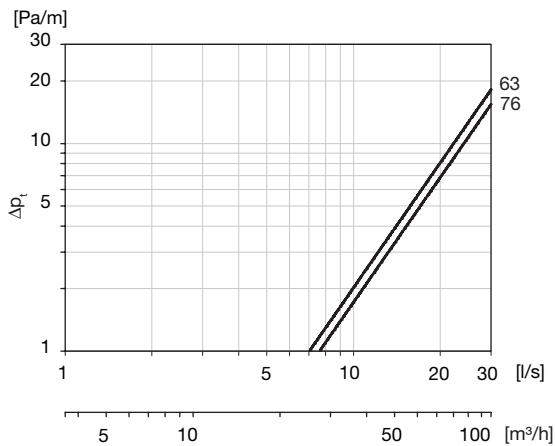
Technical data

Pressure drop

Straight



Bent 45° (length 0,5 m)



Bent 90° (length 0,5 m)

