



Mounting instruction

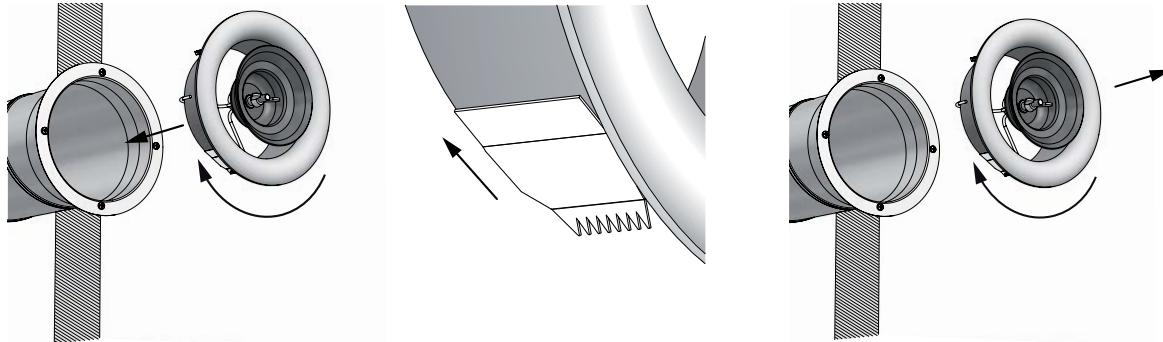
Lindab Airy

Supply and exhaust valve





Mounting of valve



The valve is equipped with flexible spring wings intended to fit in sheet metal fittings.

It is recommended that the valve is mounted in the frame ILVRU. The product will also fit in the valve frames VRGU, VRGM, VRFU, VRFM and the products BU GJUT, and TCPU GJUT.

The valve body has to cover the brim of the product it is fitted into. Therefore the maximum diameter of the brim for Ø100 is 133,5 mm, for Ø125 is 152,5 mm and for Ø160 is 187,5 mm.

To mount the valve press the valve's body into the frame and rotate it clockwise. To demount the body rotate it clockwise while pulling.

Mounting close to wall or ceiling

Mount the duct system firmly so the valve can be properly attached to the wall or ceiling.

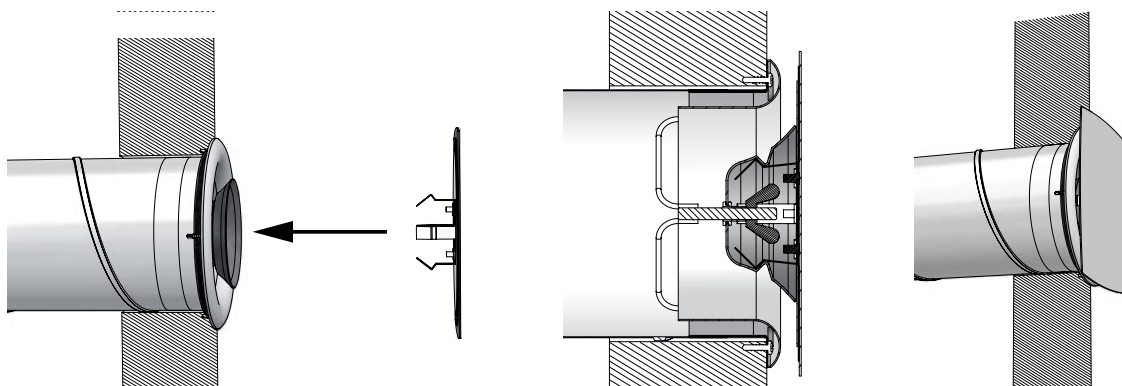
When balancing the valve it is important that the frontplate can be rotated 360°.

If it is impossible to rotate it the front plate has to be removed before each adjustment

	Model	dim nom	b mm
	Round	100	70
		125	85
		160	118
	Square	100	100
		125	118
		160	150
	Bow	100	100
		125	118
		160	150
	Ellipse	100	130
		125	155
		160	195
	Rectangle	100	130
		125	155
		160	195

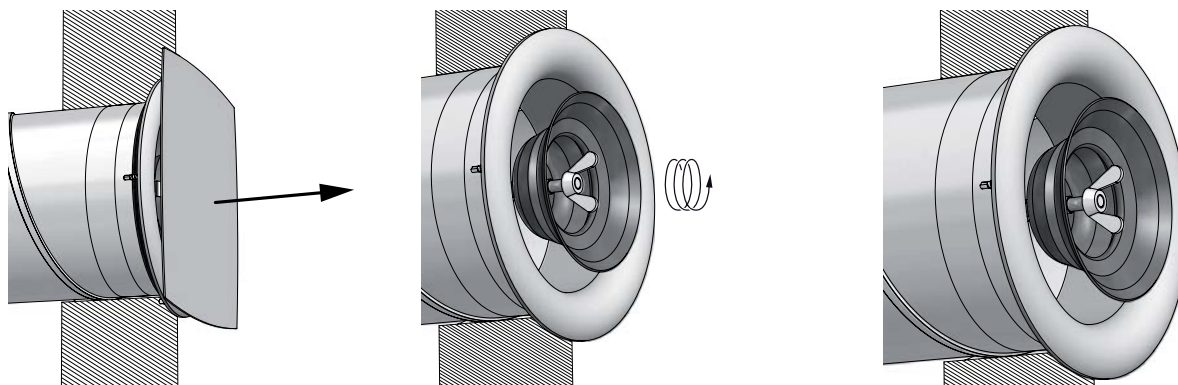


Mounting of front plate

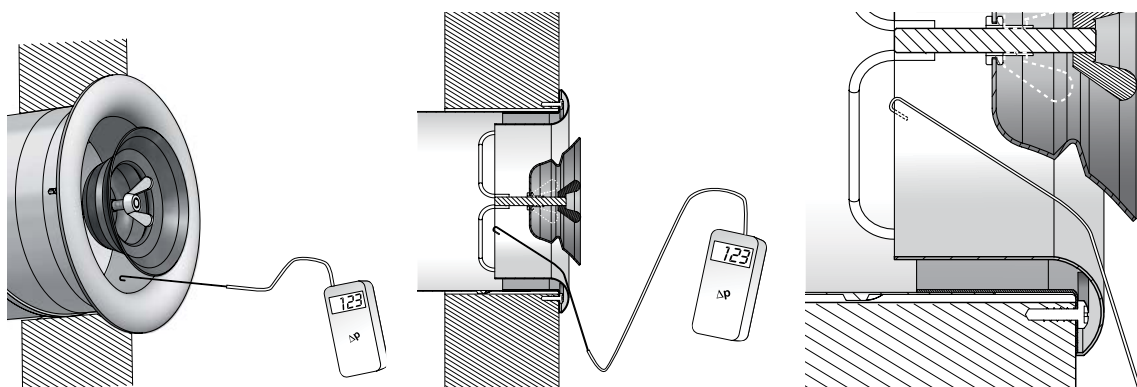


1. If the valve needs to be balanced do so otherwise lock the cone's position by locking the wingnut on the threaded rod against the cone.
2. Attach the front plate of your choice onto the cone by clicking the springs into the cone.

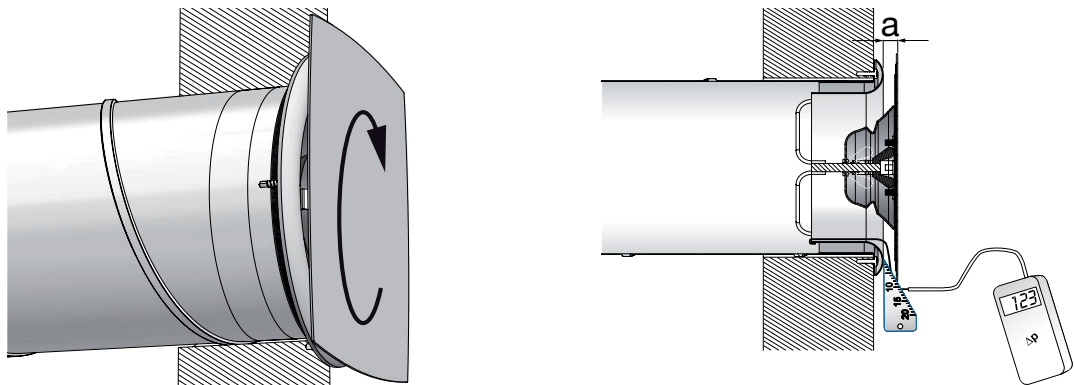
Balancing



1. Remove the front plate.
2. Unscrew the wingnut so that the cone is unlocked and can be adjusted.

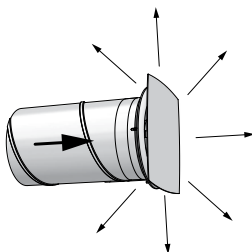


3. Hook the bent part of Lindab's adjustment tool, VAK, around the edge of the frame. Tilt the tool so that it will fit when the front plate is attached.



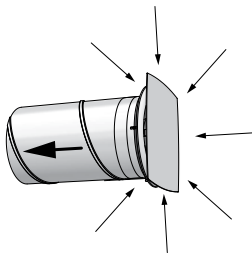
4. Mount the front plate.
5. Adjust the air flow by rotating the front plate. Measure the distance, a , between the front plate and the frame and use k -factor to calculate the air flow, $q \text{ (l/s)} = k \cdot \sqrt{p}$.

Supply

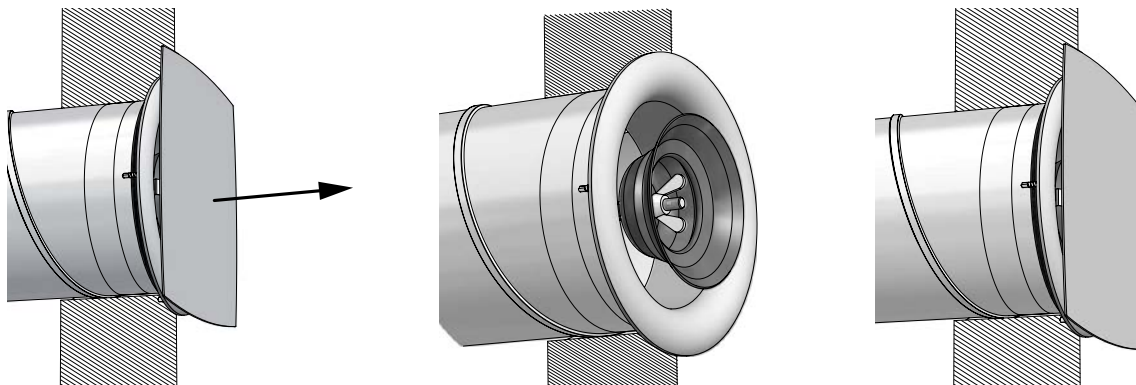


\varnothing mm	Setting a (mm)					
	a	5	8	10	13	18
100	k	0,6	1,1	1,7	3,2	4,4
	a	4	7	9	12	17
125	k	0,7	1,2	2,0	4,0	5,9
	a	4	7	9	12	17
160	k	1,2	2,2	3,5	4,8	7,7
	a	4	7	9	12	17

Exhaust



\varnothing mm	Setting a (mm)					
	a	5	8	10	13	18
100	k	0,9	1,8	2,2	3,2	4,0
	a	4	7	9	12	17
125	k	1,1	1,8	2,4	3,3	4,6
	a	4	7	9	12	17
160	k	1,0	1,7	2,6	3,7	6,1
	a	4	7	9	12	17

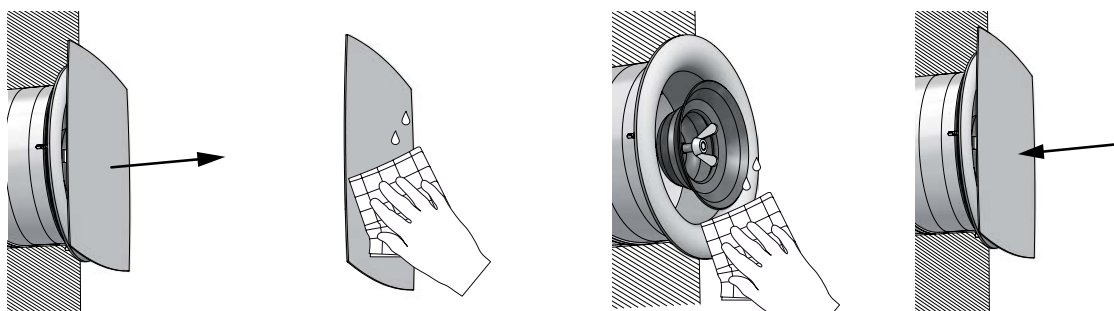


6. Remove the front plate.

7. Lock the cone's position by fasten the wingnut on the threaded rod.

8. Attach the front plate onto the cone.

Maintenance



To clean the valve remove the front plate and clean it with a mild detergent or a wet cloth.

Make sure not to change the cone's position while cleaning the valve.

The insulation filter can be changed by first removing the insulation holder and then the filter. Press the new insulation filter onto the front plate and then press the insulation holder onto the insulation filter.

