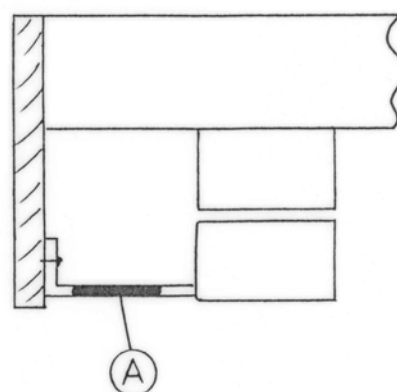
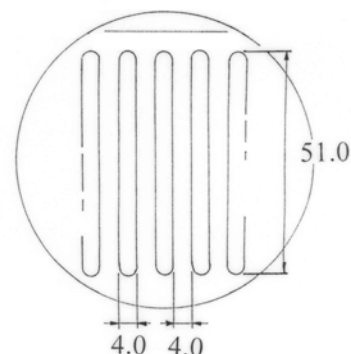
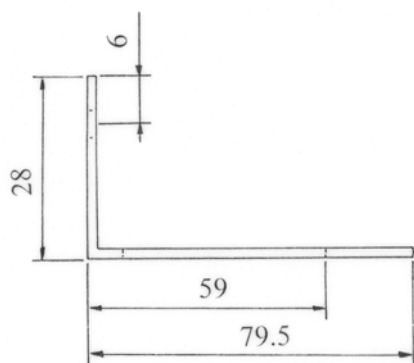
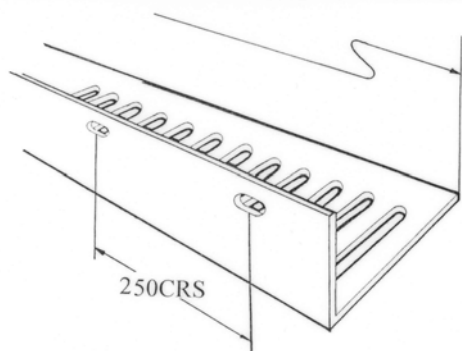


Flat Roof Soffit Ventilator

CODE **G826**

TOTAL LENGTH OF PRODUCT 3100mm



Description:

The G826 Flat Roof Soffit Ventilator is designed for flat roof applications where an upright fixing is required and 25mm airflow is needed.

The airflow passage consists of evenly spaced slots specifically sized to prohibit large insects gaining access but wide enough not to be blocked by debris, paint or water droplets (See BS5250 section 6).

COLOURS	Brown
PACKING DETAILS	Packed in 10's in poly sleeve.
WEIGHT	6.4kg per pack
MATERIAL	UPVC
MANUFACTURING PROCESS	Extrusion
FREE AIRFLOW	25,000mm ² /M equivalent to a continuous gap of 25mm

Fitting Instructions:

The G826 flat roof soffit ventilator (A) should be securely screwed to the soffit board through the fixing holes provided and butted up to the outer brick wall as shown.

This is only one application and this product can be fitted in a wide variety of ways depending on soffit detail.

Use in conjunction with other products from the Manthorpe range to provide a complete roof ventilation system.

References:

BRE:	DIGEST 262/270
BSI:	BS5250
DOE:	Building Regs F2
NHBC:	Good Practice Guide
NHBC:	Standards 7.2

MANTHORPE BUILDING PRODUCTS LTD
MANTHORPE HOUSE
BRITAIN DRIVE
CODNOR GATE BUSINESS PARK
RIPLEY
DERBYSHIRE DE5 3ND

TEL: 01773 514 200
FAX: 01773 514 262
EMAIL: sales@manthorpe.co.uk
WEB: www.manthorpe.co.uk

DRN M.A

Date 01.08.03

The company maintains a policy of continuous development of its product range and reserves the right to amend the specification without notice.

DRG No

MBP 8004

Issue

A