

## PRODUCT DATASHEET

# RDC10-40 Adjustable Joist Cradle

The RDC10-40 adjustable cradle is designed to support all conventional decking and flooring systems, both external and internal.

### LEGS

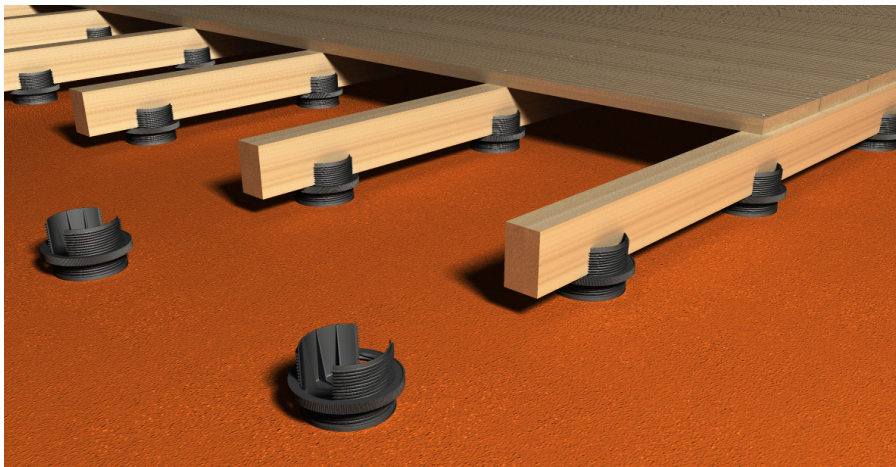
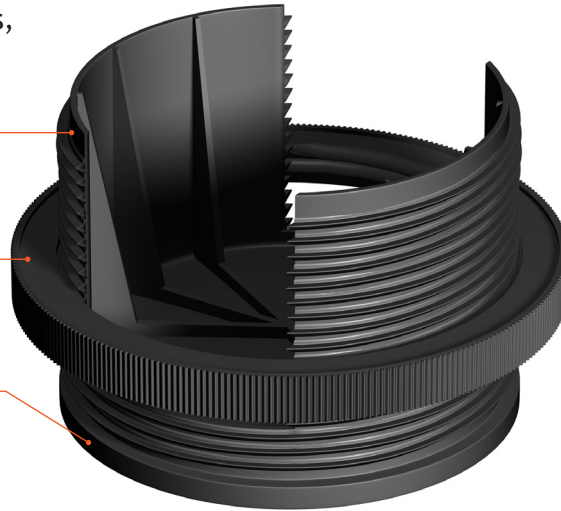
- Locate joists quickly and simply
- Prevent joist from moving

### ADJUSTMENT RING

- Allows millimetre perfect adjustment
- Allows height to be built up to 40mm

### FOAM SUPPORT BASE

- Evenly spreads load
- Protects membranes



## TECHNICAL SPECIFICATION

Material	Recycled Nylon (glass filled)
Height range	10mm to 40mm
Compression	6kN/m <sup>2</sup> (min. 6 cradles/ m <sup>2</sup> )
Base diameter	90mm
Bearer width capacity	44mm to 50mm bearer width
Bearer/cradle connection	Loose laid
Biological/chemical	Resistant to moulds, algae, alkali, bitumen, UV
Working temperature	-30°C to 120°C
Cradle spacing	400mm centre-to-centre (joist spacing 500mm max)

*Fully tested to conform to the loading conditions for flooring as described in BS 5399*



Castlepoint  
Castle Way  
Ellon AB41 9RG

01358 726000  
[sales@rynogroup.co.uk](mailto:sales@rynogroup.co.uk)  
[rynogroup.co.uk](http://rynogroup.co.uk)