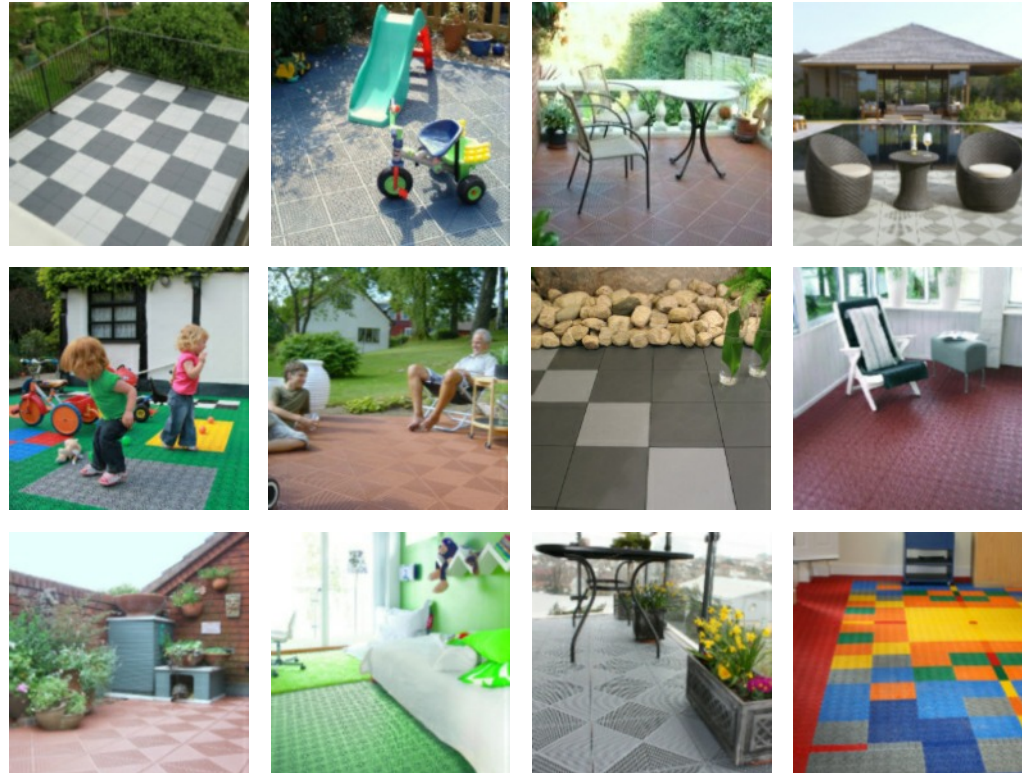


Home Flooring

Introducing a new and exciting innovation in flooring, particularly for outdoor areas. TactTiles offer choice, cost effectiveness, durability and the ability to create your own bespoke designed flooring space for entertaining, relaxation or play - for all generations.

TactTiles are a smart contemporary choice for those looking for something a little less ordinary and are suitable for: **balconies, patios, roof terraces, cellars** and **children's play spaces**.

Sustainable and simple to fit, TactTiles offer a superb DIY solution for the modern homeowner.



Home Flooring

TactTiles Flooring
+44 (0)1458 253395
info@tacttiles.com
www.tacttiles.com



Outdoor Floors

Indoor Floors

Design

TactTiles modular flooring systems are available in variety of colours and are ideal for a number of domestic applications. System 2 ranges: **Piazza, Briq, Metro, Elite and Nova**

Benefits

- For indoor and outdoor use
- Easy to install and cut to fit any space
- Requires minimal maintenance
- Durable & UV stable (will not fade)
- Excellent drainage capacity in wet areas
- Ventilates the floor underneath
- 100% Recyclable
- Ideal retro-fit solution over slippery decking or cracked concrete and paving slabs.
- Create a bespoke design by mixing colours

Construction

The unique construction and perforated design underneath allows excellent drainage capabilities, which will ensure the surface dries quickly after rainfall. These innovative floor tiles are also antibacterial and chemically resistant, making them an desired choice for both leisure and work environments..

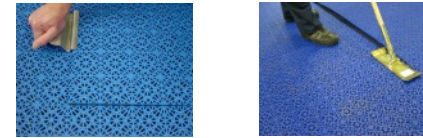
Installation

TactTiles can be installed over various substrates and can be supplied in sheet form, for larger areas. Each tile interlocks creating a seamless floor with bevelled edges and corners to prevent any trip hazards.

Tapping a rubber mallet or similar over the protruding rings easily interlocks the tiles together. No special tools, glue or screws are required and the tiles can easily be cut to fit any space.

Disassembly Tools

The ingenious design allows for the floor to be quickly moved (either whole or part) using a disassembly tool. If any damage occurs to an area or individual tile, simply remove and replace, using a replacement tool.

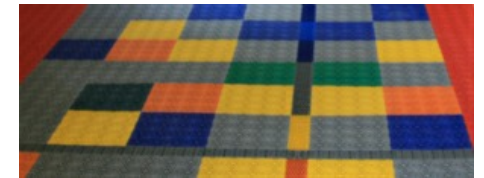


Maintenance

Our modular floors require little maintenance, standard floor care such as occasional wet cleaning, vacuuming and / or pressure washing (for a deep annual clean) is usually all that is required. TactTiles modular floors systems provide an ingenious, modern alternative to traditional floor coverings in many areas: cellars, pool surrounds play areas, etc.

Flooring for You

Create your own look by mixing colours, tiles and expansion strips - show some flair and individuality.



TactTiles - System2

Piazza

Piazza interlocking floor tiles are a popular choice for outdoor spaces: balconies, patios and roof terraces and create a contemporary look in a variety of natural shades. Our innovative outdoor flooring ranges offer simplicity in fitting and do not require any annual treatments as they are non-slip and UV resistant - a long term benefit in inclement weather conditions.

Technical Information

Material: Environmentally friendly recyclable UV-stabilized Polypropylene

Size: 380 x 380 mm

Packaging: 5 m² / box = 35 tiles

Pre-assembled sheets: 4 x 3 tiles = 12 tiles

Thickness: 10.1mm

Accessories:

- Edge strips: 380 x 55 mm
- Corner strips: 55 x 55 mm
- Expansion strips: 150 x 75 mm
- Expansion Cross-piece
- Disassembly Tool
- Replacement Tool



Accessories

Several practical accessories are available: Disassembly Tools, Bevelled Edging, Expansion Strips & Corner Strips in matching colours.

TactTiles - System1 Pedestrian

Pedestrian interlocking floor tiles create impact with an array of vibrant colours and are practical and hardwearing. With no need for adhesives and an antibacterial finish, they provide an easy fit solution for hardworking floor areas, in and around your home.

Pool surrounds, garages and playrooms can be quickly revitalised with a TactTiles modular system: practical and safe flooring.

Technical information

Material: Environmentally friendly recyclable UV-stabilized Polypropylene with rubber additive.

Size: 300 x 300mm.

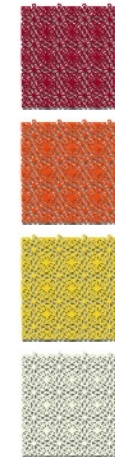
Packaging: 5 m² / box = 55 tiles

Pre-assembled sheets: 4 x 3 tiles = 12 tiles

Thickness: 13.5mm

Accessories:

- Edge strips: 300 x 55 mm
- Corner strips: 55 x 55 mm
- Expansion strips: 150 x 75 mm
- Disassembly Tool
- Replacement Tool



Tact Tiles
multi functional flooring



Tact Tiles
multi functional flooring

