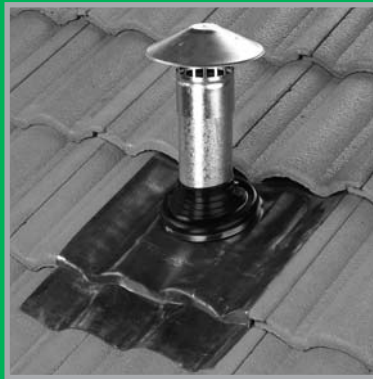
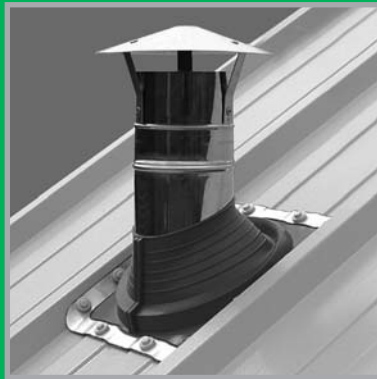


Uniclass L52944:P71	EPIC E375:X71
CI/SfB (47)	In6

# V-SEAL®

## Pipe Flashing Systems





# Pipe Flashing Systems

*The widest range of pipe flashings available to the market*

## Contents Page

Front Cover 1

Contents 2

Introduction 2-3

### Pipe Flashing Systems – for metal roofs

AD Series 4-8

MS Series 9

Fixing Kits 10

Selector Guide 11

Stripflash 12

Expansion Joint 13

### Pipe Flashing Systems – for slate and tiled roofs

VL Series 14-15

VA Series 16-17

Installation Instructions 18

Selector Guide 19

### Pipe Flashing Systems 20-21 – for solar systems

### Pipe Flashing Systems – for flat roofs

FR Series 22-24

RFR Series 25

MR Series 26-27

Back Cover 28



### So many applications . . .

Pipe flashings provide a durable, flexible, weatherproof seal, for a vast range of applications. These include sealing around pipes, vents, ducts, chimneys, electrical cables, solar pipework, and other services that pass through the building envelope.

### Problem solving products . . .

Sealing around penetrations through buildings is an important issue. Weather sealing of the external building envelope is a vital concern. Air sealing of buildings is becoming an increasingly crucial element in meeting prevailing construction standards and regulations. Penetrations through buildings can cause problems. Our pipe flashing systems are purpose designed to provide the solution and have been proven over many years of service in demanding and challenging construction environments around the world.

### Extensive range . . .

We offer from the stock the widest range of pipe flashings and ancillaries available to the market. These products are divided into three main groups:



Pipe Flashing Systems  
– for metal roofs



Pipe Flashing Systems  
– for slate and tiled roofs



Pipe Flashing Systems  
– for flat roofs



### Pipe Flashing Systems



# Pipe Flashing Systems *For metal roofs*



V-SEAL pipe flashings provide a flexible, durable, weatherproof seal where penetrations pass through the metal, plastic or fibre cement roofing and cladding of the building envelope.

#### AD Series (pages 4-8)

– Pipe flashings for pipe diameters from 10mm to 750mm to suit standard or retrofit applications.

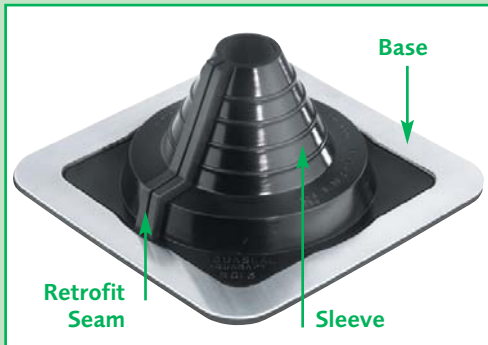
#### MS Series (page 9)

– Pipe flashings for cable and pipe diameters from 3mm to 90mm.

#### Fixing Kits (page 10)

– Purpose designed fixing kits for installing V-SEAL pipe flashings.

## Providing solutions by design – AD Series and MS Series



#### Base

The square base design facilitates easy installation, particularly on profiled material where it is notoriously difficult to cut a perfectly round clearance hole. The aluminium support ring provides reinforcement where self drilling screws or rivets fasten the flashing to the roof. A malleable grade of aluminium allows the base to be easily formed to the profile or contours of the roof sheet.

#### Retrofit Seam (AD Series ONLY)

See page 5 for details on this unique design feature.

#### Sleeve

Each flashing suits a wide range of pipe sizes and has pipe diameters marked on the ribbed measurement lines. This provides an easy identification of the size ranges and helps guide an even cut around the cone. The flexible sleeve allows the pipe flashings to be installed on flat or pitched roofs whilst maintaining their shape and avoiding the collection of water and dust. The sleeve also allows for expansion, contraction and building movement whilst maintaining a weatherproof seal.

#### Materials

The pipe flashings are available in EPDM (for cold pipes) and silicone (for high temperature pipes). These materials are of the highest quality and are resistant to ozone and ultra violet light. The manufacturers state that the flashings have a 20 year product replacement warranty against faulty manufacture or materials.

#### Ethylene Propylene Diene Monomer (EPDM) Rubber:

Temperature range –40°C to +115°C.

#### Silicone Rubber:

Temperature range –60°C to +240°C.

#### Aluminium Support Ring:

Grade A1200-0, 1mm thick.

## AD Series for retrofit applications

A key feature of the AD Series pipe flashings is their adaptability – they can be used for both standard and retrofit applications.

For most installations the pipe flashing can be pulled down from the top of the pipe but in some situations this is not possible because of obstructions such as cowls, collars, brackets etc. In these circumstances the unique design of the AD Series pipe flashings means they can simply be cut down the seam, wrapped around the penetration and then crimped together using the VSRFC retrofit clips and fixed to the roof material in the usual manner.

**AD Series pipe flashings – one range – standard or retrofit.**

**Standard applications – use the AD Series pipe flashings only.**

**Retrofit applications – use the AD Series pipe flashing + VSRFC retrofit clips.**



VSRFC retrofit clips

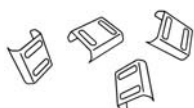


Cutting the seam



A retrofit installation

### VSRFC Retrofit Clips



Product Code	Description	Colour	Pack Quantity
VSRFC	Retrofit Clip	Silver	50

The quantity of VSRFC clips each AD Series pipe flashing requires for retrofit applications is detailed in the technical information on pages 6-8. An example of this information is shown below:

FOR RETROFIT APPLICATIONS ONLY – Quantity of VSRFC clips required: 6 per flashing

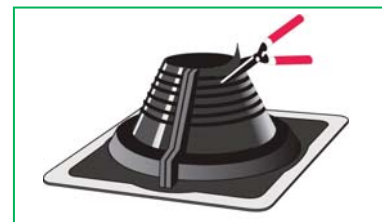
#### AD Series 125mm-200mm



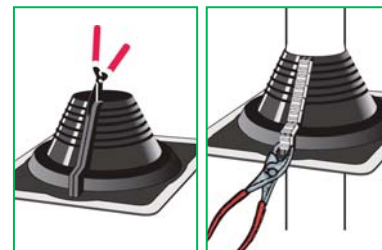
Product Code	Material	Colour	Temperature Resistance	Pipe Diameters (mm)	Base Dimensions (mm)	Pack Quantity
AD EB 125-200	EPDM	Black	-40°C to +115°C	125-200	305 x 305	10
AD EG 125-200	EPDM	Grey	-40°C to +115°C	125-200	305 x 305	10
AD SR 125-200	Silicone	Red	-60°C to +240°C	125-200	305 x 305	10

FOR RETROFIT APPLICATIONS ONLY – Quantity of VSRFC clips required: 6 per flashing

### Installation instructions



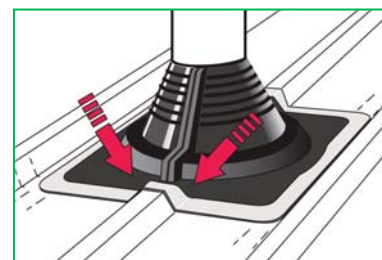
1. Cut rubber cone to size along marked measurement lines using sharp pair of scissors or knife. Hole size of cone should be cut minimum 15mm smaller than outside diameter of pipe.



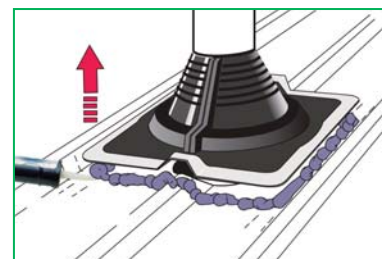
2. STEP 2 ONLY APPLIES TO RETROFIT APPLICATIONS.

IF YOU ARE NOT RETROFITTING PLEASE GO TO STEP 3.

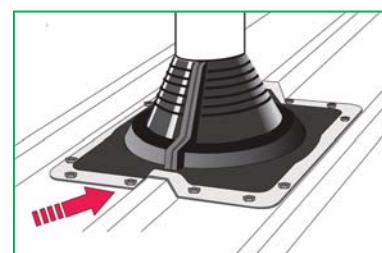
If flashing cannot be pulled over the pipe due to cowl or other obstruction, cut down seam of flashing and wrap around pipe. Once fitted around pipe apply bead of sealant down mating edges of seam and crimp together using the VSRFC retrofit clips. This joint should be on down side of the pipe.



3. Use water as lubricant when sliding flashing down pipe. Aluminium base should be formed by hand around any profile or contours of sheet material.



4. Lift flashing away from sheet material and apply bead of silicone sealant to underside of flashing base. Firmly redress flashing, and fix base to sheet as shown. Apply silicone to top of rubber cone.





## To order AD Series:

Our product codes have been formulated to make selecting the correct pipe flashing as simple as possible by providing the information required in a concise manner, showing type, material, colour and pipe diameters.

Example Code:



Use the information provided ensuring the diameter of the penetration you need to seal falls comfortably within the dimensions shown (see the Pipe Flashings Product Selector Guide – for metal roofs on page 11 for further assistance). Select either EPDM black or grey (cold pipes) or silicone red (hot pipes) and use the relevant product code.

FOR RETROFIT APPLICATIONS ONLY, it is necessary to order the retrofit clips (product code VSRFC). The quantity of clips required per flashing is detailed for each pipe flashing.

**Note:** For square pipes or ducts, use the following method to calculate the size of flashing required. Add up the dimensions of all four sides and divide by 3.142. Select the flashing which will comfortably accommodate the resulting dimension. There is also an AD Series pipe flashing purpose designed for square pipes 25-100mm detailed on page 8.

### AD Series 10mm-90mm



Product Code	Material	Colour	Temperature Resistance	Pipe Diameters (mm)		Base Dimensions (mm)	Pack Quantity
				0-25° Pitch	0-45° Pitch		
AD EB 10-90	EPDM	Black	-40°C to +115°C	10-90	10-70	155 x 155	20
AD EG 10-90	EPDM	Grey	-40°C to +115°C	10-90	10-70	155 x 155	20
AD SR 10-90	Silicone	Red	-60°C to +240°C	10-90	10-70	155 x 155	20

FOR RETROFIT APPLICATIONS ONLY – Quantity of VSRFC clips required: 5 per flashing

### AD Series 40mm-100mm



Product Code	Material	Colour	Temperature Resistance	Pipe Diameters (mm)		Base Dimensions (mm)	Pack Quantity
				0-25° Pitch	0-45° Pitch		
AD EB 40-100	EPDM	Black	-40°C to +115°C	40-100	40-90	203 x 203	10
AD EG 40-100	EPDM	Grey	-40°C to +115°C	40-100	40-90	203 x 203	10
AD SR 40-100	Silicone	Red	-60°C to +240°C	40-100	40-90	203 x 203	10

FOR RETROFIT APPLICATIONS ONLY – Quantity of VSRFC clips required: 5 per flashing

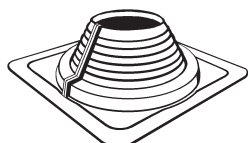
### AD Series 75mm-150mm



Product Code	Material	Colour	Temperature Resistance	Pipe Diameters (mm)		Base Dimensions (mm)	Pack Quantity
				0-25° Pitch	0-45° Pitch		
AD EB 75-150	EPDM	Black	-40°C to +115°C	75-150	75-135	254 x 254	10
AD EG 75-150	EPDM	Grey	-40°C to +115°C	75-150	75-135	254 x 254	10
AD SR 75-150	Silicone	Red	-60°C to +240°C	75-150	75-135	254 x 254	10

FOR RETROFIT APPLICATIONS ONLY – Quantity of VSRFC clips required: 6 per flashing

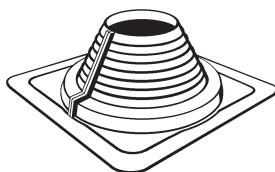
### AD Series 125mm-200mm



Product Code	Material	Colour	Temperature Resistance	Pipe Diameters (mm)		Base Dimensions (mm)	Pack Quantity
				0-25° Pitch	0-45° Pitch		
AD EB 125-200	EPDM	Black	-40°C to +115°C	125-200	125-180	305 x 305	10
AD EG 125-200	EPDM	Grey	-40°C to +115°C	125-200	125-180	305 x 305	10
AD SR 125-200	Silicone	Red	-60°C to +240°C	125-200	125-180	305 x 305	10

FOR RETROFIT APPLICATIONS ONLY – Quantity of VSRFC clips required: 6 per flashing

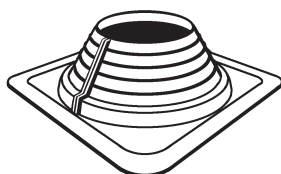
## AD Series 145mm-250mm



Product Code	Material	Colour	Temperature Resistance	Pipe Diameters (mm)		Base Dimensions (mm)	Pack Quantity
				0-25° Pitch	0-45° Pitch		
<b>AD EB 145-250</b>	<b>EPDM</b>	<b>Black</b>	–40°C to +115°C	145-250	145-230	356 x 356	10
<b>AD EG 145-250</b>	<b>EPDM</b>	<b>Grey</b>	–40°C to +115°C	145-250	145-230	356 x 356	10
<b>AD SR 145-250</b>	<b>Silicone</b>	<b>Red</b>	–60°C to +240°C	145-250	145-230	356 x 356	10

FOR RETROFIT APPLICATIONS ONLY – Quantity of VSRFC clips required: 7 per flashing

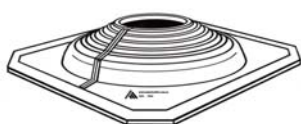
## AD Series 195mm-300mm



Product Code	Material	Colour	Temperature Resistance	Pipe Diameters (mm)		Base Dimensions (mm)	Pack Quantity
				0-25° Pitch	0-45° Pitch		
<b>AD EB 195-300</b>	<b>EPDM</b>	<b>Black</b>	–40°C to +115°C	195-300	195-250	432 x 432	5
<b>AD EG 195-300</b>	<b>EPDM</b>	<b>Grey</b>	–40°C to +115°C	195-300	195-250	432 x 432	5
<b>AD SR 195-300</b>	<b>Silicone</b>	<b>Red</b>	–60°C to +240°C	195-300	195-250	432 x 432	5

FOR RETROFIT APPLICATIONS ONLY – Quantity of VSRFC clips required: 7 per flashing

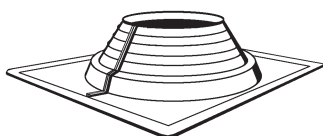
## AD Series 230mm-380mm



Product Code	Material	Colour	Temperature Resistance	Pipe Diameters (mm)		Base Dimensions (mm)	Pack Quantity
				0-25° Pitch	0-45° Pitch		
<b>AD EB 230-380</b>	<b>EPDM</b>	<b>Black</b>	–40°C to +115°C	230-380	230-355	540 x 597	5
<b>AD SR 230-380</b>	<b>Silicone</b>	<b>Red</b>	–60°C to +240°C	230-380	230-355	540 x 597	5

FOR RETROFIT APPLICATIONS ONLY – Quantity of VSRFC clips required: 9 per flashing

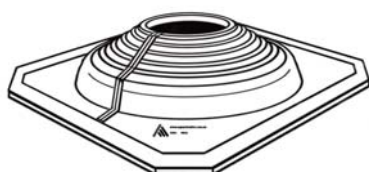
## AD Series 315mm-500mm



Product Code	Material	Colour	Temperature Resistance	Pipe Diameters (mm)		Base Dimensions (mm)	Pack Quantity
				0-25° Pitch	0-45° Pitch		
<b>AD EB 315-500</b>	<b>EPDM</b>	<b>Black</b>	–40°C to +115°C	315-500	315-450	650 x 720	1
<b>AD SR 315-500</b>	<b>Silicone</b>	<b>Red</b>	–60°C to +240°C	315-500	315-450	650 x 720	1

FOR RETROFIT APPLICATIONS ONLY – Quantity of VSRFC clips required: 11 per flashing

## AD Series 400mm-750mm

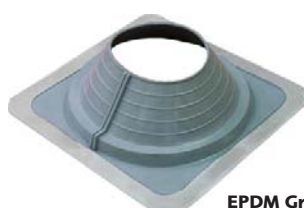


Product Code	Material	Colour	Temperature Resistance	Pipe Diameters (mm)		Base Dimensions (mm)	Pack Quantity
				0-25° Pitch	0-45° Pitch		
<b>AD EB 400-750</b>	<b>EPDM</b>	<b>Black</b>	–40°C to +115°C	400-750	400-500	965 x 995	1
<b>AD SR 400-750</b>	<b>Silicone</b>	<b>Red</b>	–60°C to +240°C	400-750	400-500	965 x 995	1

FOR RETROFIT APPLICATIONS ONLY – Quantity of VSRFC clips required: 15 per flashing



EPDM Black



EPDM Grey



Silicone Red

### AD Series Square Flashing

The innovative AD Series Square Flashing has been specifically designed to seal square section pipe and penetrations, and shares all the other features of the AD Series, including the retrofit seam.



#### AD Series Square Flashing 25mm-100mm



Product Code	Material	Colour	Temperature Resistance	Square Pipe Sizes (mm)		Base Dimensions (mm)	Pack Quantity
				0-25° Pitch	0-45° Pitch		
AD EB SQ 25-100	EPDM	Black	-40°C to +115°C	25-100	25-75	203 x 203	10

FOR RETROFIT APPLICATIONS ONLY – Quantity of VSRFC clips required: 5 per flashing

### AD Series Wall Flashing

The AD Series Wall Flashing has a unique flat cone, designed specifically for use on flat surfaces and vertical wall cladding. This product can be used in standard or retrofit situations and has measurement lines to help guide an even cut around the cone.

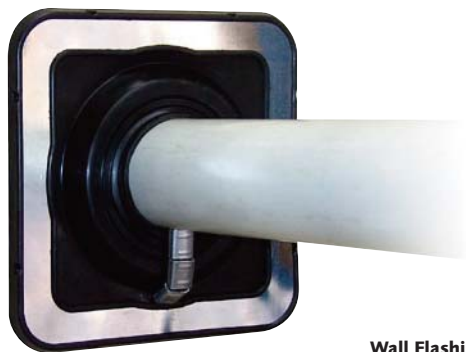


#### AD Series Wall Flashing 0mm-125mm



Product Code	Material	Colour	Temperature Resistance	Pipe Diameters (mm)		Base Dimensions (mm)	Pack Quantity
				0-125			
AD EB WF 0-125	EPDM	Black	-40°C to +115°C	0-125		203 x 203	10

FOR RETROFIT APPLICATIONS ONLY – Quantity of VSRFC clips required: 4 per flashing



Wall Flashing with pipe



## To order MS Series:

Our product codes have been formulated to make selecting the correct pipe flashing as simple as possible by providing the information required in a concise manner, showing type, material, colour and pipe diameters.

Example Code:



Use the information provided ensuring the diameter of the penetration you need to seal falls comfortably within the dimensions shown (see the Pipe Flashings Product Selector Guide – for metal roofs on page 11 for further assistance).

Select either EPDM black (cold pipes) or silicone red (hot pipes) and use the relevant product code.

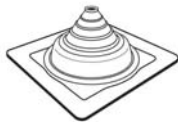
### MS Series 3mm-25mm



Product Code	Material	Colour	Temperature Resistance	Pipe Diameters (mm)		Base Dimensions (mm)	Pack Quantity
				0-25° Pitch	0-45° Pitch		
<b>MS EB 3-25</b>	<b>EPDM</b>	<b>Black</b>	–40°C to +115°C	3-25	3-20	75 x 75	20
<b>MS SR 3-25</b>	<b>Silicone</b>	<b>Red</b>	–60°C to +240°C	3-25	3-20	75 x 75	20

\* This product is especially suited for solar applications and its unique features are highlighted on pages 20-21

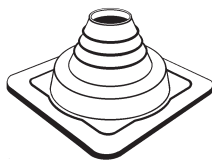
### MS Series 5mm-50mm



Product Code	Material	Colour	Temperature Resistance	Pipe Diameters (mm)		Base Dimensions (mm)	Pack Quantity
				0-25° Pitch	0-45° Pitch		
<b>MS EB 5-50</b>	<b>EPDM</b>	<b>Black</b>	–40°C to +115°C	5-50	5-45	115 x 115	20
<b>MS SR 5-50</b>	<b>Silicone</b>	<b>Red</b>	–60°C to +240°C	5-50	5-45	115 x 115	20

\* This product is especially suited for solar applications and its unique features are highlighted on pages 20-21

### MS Series 45mm-90mm



Product Code	Material	Colour	Temperature Resistance	Pipe Diameters (mm)		Base Dimensions (mm)	Pack Quantity
				0-25° Pitch	0-45° Pitch		
<b>MS EB 45-90</b>	<b>EPDM</b>	<b>Black</b>	–40°C to +115°C	45-90	45-80	155 x 155	20
<b>MS SR 45-90</b>	<b>Silicone</b>	<b>Red</b>	–60°C to +240°C	45-90	45-80	155 x 155	20



**Pipe Flashing Systems – for solar systems**  
see pages 20-21

## Fixing Kits

V-SEAL fixing kits have been specifically designed to simplify the installation of pipe flashings. The components included in the fixing kits provide the materials required to carry out installation on metal, plastic or fibre cement roofing and cladding materials.

Each fixing kit contains:

Fitting instructions – clearly setting out the steps for installation.

Hooked blade trimming knife – designed for safe, easy cutting of sleeve.

Silicone sealant – to seal between the roof material and the pipe flashing.

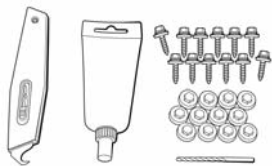
HSS drill bit – to drill a pilot hole through the pipe flashing and roof material prior to fixing.

Washed fasteners – to firmly fix the pipe flashing to the roof material.

Hexagon colour caps – to cover the fastener heads and complete the aesthetic appearance.



### VSFK-S



#### Product Code

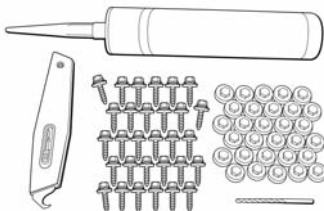
**VSFK-S**

12 washed fasteners  
12 hexagon colour caps  
HSS drill bit

#### Contents

80ml silicone sealant  
Hooked blade trimming knife  
Fitting instructions

### VSFK-L



#### Product Code

**VSFK-L**

30 washed fasteners  
30 hexagon colour caps  
HSS drill bit

#### Contents

300ml silicone sealant  
Hooked blade trimming knife  
Fitting instructions

The information below, details the fixing kit(s) required to complete the installation of MS Series and AD Series pipe flashings.

MS Series 3mm-25mm	1 x VSFK-S	AD Series 75mm-150mm	1 x VSFK-S
MS Series 5mm-50mm	1 x VSFK-S	AD Series 125mm-200mm	1 x VSFK-S
MS Series 45mm-90mm	1 x VSFK-S	AD Series 145mm-250mm	1 x VSFK-L
AD Series Square Flashing	1 x VSFK-S	AD Series 195mm-300mm	1 x VSFK-L
AD Series Wall Flashing	1 x VSFK-S	AD Series 230mm-380mm	1 x VSFK-L
AD Series 10mm-90mm	1 x VSFK-S	AD Series 315mm-500mm	1 x VSFK-L
AD Series 40mm-100mm	1 x VSFK-S	AD Series 400mm-750mm	2 x VSFK-L

## Pipe Flashings Product Selector Guide

### For metal roofs

◆ Suitable for 0-25° roof pitches

▲ Suitable for 0-45° roof pitches

[illegible]

Stripflash

Stripflash is ideal for applications on large ducting, pipework, flues and awkward flashing details. Stripflash is a roll of flexible TPE rubber strip, which can be cut or joined to allow for use in numerous situations, solving problems where standard pipe flashings cannot be used.

The edges of Stripflash contain an expanding aluminium strip enclosed by the TPE rubber. These strips allow the flashing to be formed to the shape of most roof sheet profiles.

Each roll of Stripflash is supplied in a box complete with detailed fixing instructions and an aluminium joining strip.

Stripflash is available in widths of 235mm or 450mm, with roll lengths and further information detailed below.



Stripflash



Product Code	Material	Colour	Temperature Resistance	Roll Dimensions (width x length)	Pack Quantity
SF TG 235 x 10	TPE	Grey	-30°C to +115°C	235mm x 10m	1
SF TG 450 x 15	TPE	Grey	-30°C to +115°C	450mm x 15m	1

Stripflash is ideally fitted using our fixing kits (product code VSFK-L)  
The number of kits required will vary according to the application

## Expansion Joint

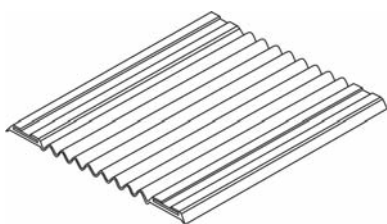
Expansion Joint has been designed specifically for installation as an expansion joint for industrial box gutters. It can also be used to seal and repair existing gutter joints, without the joints needing to be opened, or the gutter needing to be lifted or removed.

Manufactured from black EPDM rubber, with aluminium fixing strips, it is flexible, durable and waterproof, UV and air pollution resistant.

Expansion Joint is available in widths of 145mm or 200mm and is supplied in 5 metre long rolls. The product is simply cut to length and formed by hand to the required shape, then dressed down onto a generous bead of silicone sealant and fixed with suitable rivets or self-drilling screws.

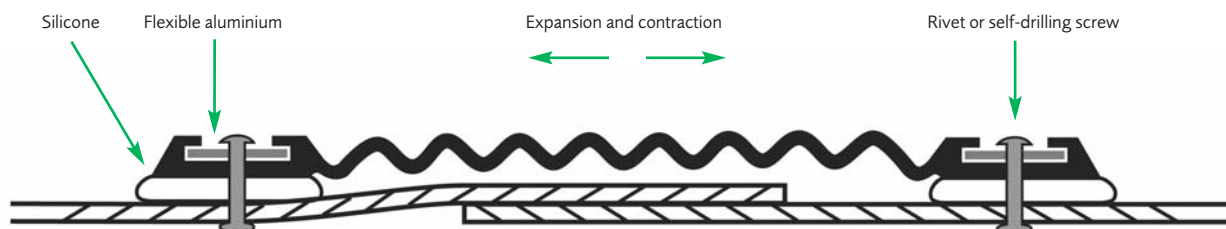


### Expansion Joint



Product Code	Material	Colour	Temperature Resistance	Roll Dimensions (width x length)	Expansion Range (mm)	Pack Quantity
<b>EJ EB 145 x 5</b>	<b>EPDM</b>	<b>Black</b>	-40°C to +115°C	145mm x 5m	145 to 175	1
<b>EJ EB 200 x 5</b>	<b>EPDM</b>	<b>Black</b>	-40°C to +115°C	200mm x 5m	200 to 250	1

### Typical expansion overlap joint cross section





# Pipe Flashing Systems *For slate and tiled roofs*



V-SEAL pipe flashing systems are purpose designed to provide a flexible, durable, weatherproof seal where penetrations pass through roof slates and tiles. These one piece roof flashings have a rubber cone, with a lead or aluminium base. They are supplied ready to install and eliminate the on-site fabrication required when installing a traditional lead slate.

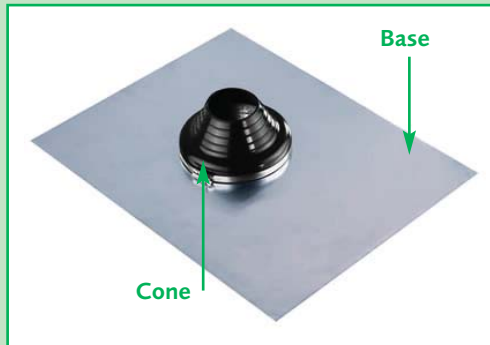
## VL Series (pages 14-15)

– Lead base pipe flashings with rubber cone for cable and pipe diameters from 5mm to 280mm.

## VA Series (pages 16-17)

– Aluminium base pipe flashings with rubber cone for cable and pipe diameters from 5mm to 450mm.

## Providing solutions by design – VL Series



### Base

The large rectangular lead base is malleable and simply formed to match the profile of roof slates and tiles. The large size of base also offers excellent coverage and provides ample working material for dressing over the tiles around the penetration. With the exception of one size, the VL Series are manufactured using Acrylead which is a unique, baked, acrylic primer coating for lead sheet. This Acrylead finish ensures safe handling and inhibits water coming into contact with lead and its oxides, which helps prevent lead run off staining the roof and entering ground water systems.

### Cone

Each rubber cone suits a wide range of pipe sizes and roof pitches. This is a major advantage when compared with traditional lead slates that have to be fabricated to suit specific dimensions and roof angles. The pipe diameters are marked on the ribbed measurement lines, providing easy identification of size ranges and helping to guide an even cut around the cone. The flexibility of the cone allows the pipe flashing to be installed on roofs of varying pitches and also accommodates expansion, contraction and building movement, whilst maintaining a weatherproof seal.

### Materials

VL Series lead base pipe flashings are available with cones in EPDM (for cold pipes) and silicone (for high temperature pipes). These materials are of the highest quality and are resistant to ozone and ultra violet light. The manufacturers state that the flashings have a 20 year product replacement warranty against faulty manufacture or materials.

### Ethylene Propylene Diene Monomer (EPDM) Rubber:

Temperature range –40°C to +115°C.

### Silicone Rubber:

Temperature range –60°C to +240°C.

### Lead Base:

1.1mm thick.

## To order VL Series:

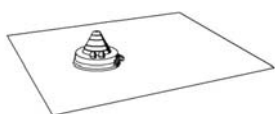
Our product codes have been formulated to make selecting the correct pipe flashing as simple as possible by providing the information required in a concise manner, showing type, cone material, colour and pipe diameters.

Example Code:

Use the information provided ensuring the pipe diameter of the penetration you need to seal falls comfortably within the dimensions shown (see the Pipe Flashings Product Selector Guide – for slate and tiled roofs on page 19 for further assistance).

Select either EPDM (cold pipes) or silicone (hot pipes) and use the relevant product code.

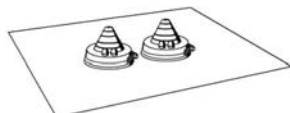
### VL Series 5mm-50mm TWIN PACK – 2 x lead base flashings in one pack



Product Code	Material	Colour	Temperature Resistance	Pipe Diameters (mm)		Base Dimensions (mm)	Pack Quantity
				0-25° Pitch	0-45° Pitch		
<b>VL SB 5-50 TWIN PACK</b>	<b>Silicone</b>	<b>Black</b>	–60°C to +240°C	5-50	5-40	Acrylead 410 x 490	2

\* This product is especially suited for solar applications and its unique features are highlighted on pages 20-21  
To ensure ease of handling and product integrity, this product comes packed with two flashings in one carton.

### VL Series 5mm-50mm DUO – 2 x cones on lead base



Product Code	Material	Colour	Temperature Resistance	Pipe Diameters (mm)		Base Dimensions (mm)	Pack Quantity
				0-25° Pitch	0-45° Pitch		
<b>VL SB 5-50 DUO</b>	<b>Silicone</b>	<b>Black</b>	–60°C to +240°C	5-50	5-40	Acrylead 450 x 600	1

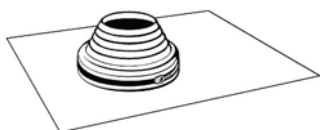
\* This product is especially suited for solar applications and its unique features are highlighted on pages 20-21

### VL Series 45mm-90mm



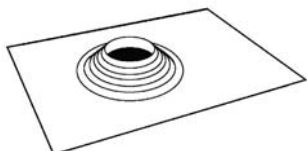
Product Code	Material	Colour	Temperature Resistance	Pipe Diameters (mm)		Base Dimensions (mm)	Pack Quantity
				0-25° Pitch	0-45° Pitch		
<b>VL EB 45-90</b>	<b>EPDM</b>	<b>Black</b>	–40°C to +115°C	45-90	45-75	Acrylead 450 x 600	5
<b>VL SR 45-90</b>	<b>Silicone</b>	<b>Red</b>	–60°C to +240°C	45-90	45-75	Acrylead 450 x 600	5

### VL Series 100mm-150mm



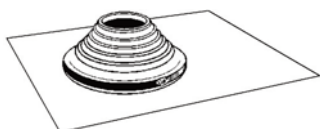
Product Code	Material	Colour	Temperature Resistance	Pipe Diameters (mm)		Base Dimensions (mm)	Pack Quantity
				0-25° Pitch	0-45° Pitch		
<b>VL EB 100-150</b>	<b>EPDM</b>	<b>Black</b>	–40°C to +115°C	100-150	100-115	Acrylead 450 x 600	5
<b>VL SR 100-150</b>	<b>Silicone</b>	<b>Red</b>	–60°C to +240°C	100-150	100-115	Acrylead 450 x 600	5

### VL Series 180mm-255mm



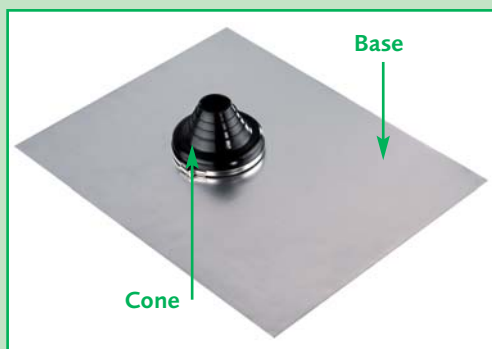
Product Code	Material	Colour	Temperature Resistance	Pipe Diameters (mm)		Base Dimensions (mm)	Pack Quantity
				0-25° Pitch	0-45° Pitch		
<b>VL EB 180-255</b>	<b>EPDM</b>	<b>Black</b>	–40°C to +115°C	180-255	180-200	Natural lead 600 x 700	1

### VL Series 150mm-280mm



Product Code	Material	Colour	Temperature Resistance	Pipe Diameters (mm)		Base Dimensions (mm)	Pack Quantity
				0-25° Pitch	0-45° Pitch		
<b>VL EB 150-280</b>	<b>EPDM</b>	<b>Black</b>	–40°C to +115°C	150-280	150-255	Acrylead 600 x 850	1
<b>VL SR 150-280</b>	<b>Silicone</b>	<b>Red</b>	–60°C to +240°C	150-280	150-255	Acrylead 600 x 850	1

## Providing solutions by design – VA Series



### Base

The large rectangular aluminium base is malleable and simply formed to match the profile of roof slates and tiles. The large size of base also offers excellent coverage and provides ample working material for dressing over the tiles around the penetration. A soft grade of aluminium has been carefully selected to ensure optimum workability and ease of installation.

### Cone

Each rubber cone suits a wide range of pipe sizes and roof pitches. The pipe diameters are marked on the ribbed measurement lines, providing easy identification of size ranges and helping to guide an even cut around the cone. The flexibility of the cone allows the pipe flashing to be installed on roofs of varying pitches and also accommodates expansion, contraction and building movement, whilst maintaining a weatherproof seal.

### Materials

VA Series aluminium base pipe flashings are available with cones in EPDM (for cold pipes) and silicone (for high temperature pipes). These materials are of the highest quality and are resistant to ozone and ultra violet light. The manufacturers state that the flashings have a 20 year product replacement warranty against faulty manufacture or materials.

### Ethylene Propylene Diene Monomer (EPDM) Rubber:

Temperature range –40°C to +115°C.

### Silicone Rubber:

Temperature range –60°C to +240°C.

### Aluminium Base:

Grade B1200-0, 1mm thick.

## To order VA Series:

Our product codes have been formulated to make selecting the correct pipe flashing as simple as possible by providing the information required in a concise manner, showing type, cone material, colour and pipe diameters.

Example Code:

→ **VA**   **EB**   **45-90** ←  
 VA Series   EPDM Black   Pipe Diameters 45-90mm

Use the information provided ensuring the pipe diameter of the penetration you need to seal falls comfortably within the dimensions shown (see the Pipe Flashings Product Selector Guide – for slate and tiled roofs on page 19 for further assistance).

Select either EPDM (cold pipes) or silicone (hot pipes) and use the relevant product code.

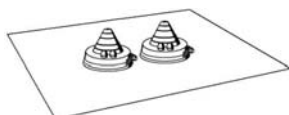
### VA Series 5mm-50mm



Product Code	Material	Colour	Temperature Resistance	Pipe Diameters (mm)		Base Dimensions (mm)	Pack Quantity
				0-25° Pitch	0-45° Pitch		
<b>VA SB 5-50</b>	<b>Silicone</b>	<b>Black</b>	–60°C to +240°C	5-50	5-40	450 x 600	5

\* This product is especially suited for solar applications and its unique features are highlighted on pages 20-21

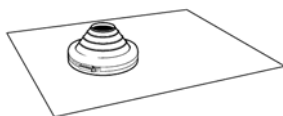
### VA Series 5mm-50mm DUO – 2 x cones on aluminium base



Product Code	Material	Colour	Temperature Resistance	Pipe Diameters (mm)		Base Dimensions (mm)	Pack Quantity
				0-25° Pitch	0-45° Pitch		
<b>VA SB 5-50 DUO</b>	<b>Silicone</b>	<b>Black</b>	–60°C to +240°C	5-50	5-40	450 x 600	5

\* This product is especially suited for solar applications and its unique features are highlighted on pages 20-21

### VA Series 45mm-90mm



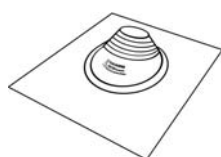
Product Code	Material	Colour	Temperature Resistance	Pipe Diameters (mm)		Base Dimensions (mm)	Pack Quantity
				0-25° Pitch	0-45° Pitch		
<b>VA EB 45-90</b>	<b>EPDM</b>	<b>Black</b>	-40°C to +115°C	45-90	45-75	450 x 600	5
<b>VA SR 45-90</b>	<b>Silicone</b>	<b>Red</b>	-60°C to +240°C	45-90	45-75	450 x 600	5

### VA Series 50mm-170mm



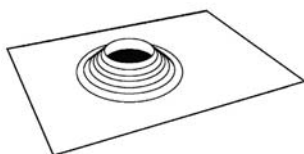
Product Code	Material	Colour	Temperature Resistance	Pipe Diameters (mm)		Base Dimensions (mm)	Pack Quantity
				0-25° Pitch	0-45° Pitch		
<b>VA EB 50-170</b>	<b>EPDM</b>	<b>Black</b>	-40°C to +115°C	50-170	50-140	450 x 600	5
<b>VA SR 50-170</b>	<b>Silicone</b>	<b>Red</b>	-60°C to +240°C	50-170	50-140	450 x 600	5

### VA Series 100mm-225mm



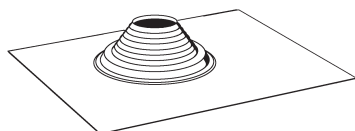
Product Code	Material	Colour	Temperature Resistance	Pipe Diameters (mm)		Base Dimensions (mm)	Pack Quantity
				0-45° Pitch	0-60° Pitch		
<b>VA EB 100-225</b>	<b>EPDM</b>	<b>Black</b>	-40°C to +115°C	100-225	100-150	500 x 600	5
<b>VA SR 100-225</b>	<b>Silicone</b>	<b>Red</b>	-60°C to +240°C	100-225	100-150	500 x 600	5

### VA Series 180mm-255mm



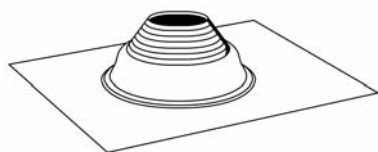
Product Code	Material	Colour	Temperature Resistance	Pipe Diameters (mm)		Base Dimensions (mm)	Pack Quantity
				0-25° Pitch	0-45° Pitch		
<b>VA EB 180-255</b>	<b>EPDM</b>	<b>Black</b>	-40°C to +115°C	180-255	180-200	600 x 800	5
<b>VA SR 180-255</b>	<b>Silicone</b>	<b>Red</b>	-60°C to +240°C	180-255	180-200	600 x 800	5

### VA Series 180mm-350mm



Product Code	Material	Colour	Temperature Resistance	Pipe Diameters (mm)		Base Dimensions (mm)	Pack Quantity
				0-25° Pitch	0-45° Pitch		
<b>VA EB 180-350</b>	<b>EPDM</b>	<b>Black</b>	-40°C to +115°C	180-350	180-280	600 x 800	5
<b>VA SR 180-350</b>	<b>Silicone</b>	<b>Red</b>	-60°C to +240°C	180-350	180-280	600 x 800	5

### VA Series 300mm-450mm



Product Code	Material	Colour	Temperature Resistance	Pipe Diameters (mm)		Base Dimensions (mm)	Pack Quantity
				0-25° Pitch	0-45° Pitch		
<b>VA EB 300-450</b>	<b>EPDM</b>	<b>Black</b>	-40°C to +115°C	300-450	300-450	956 x 956	5

Silicone Black



EPDM Black



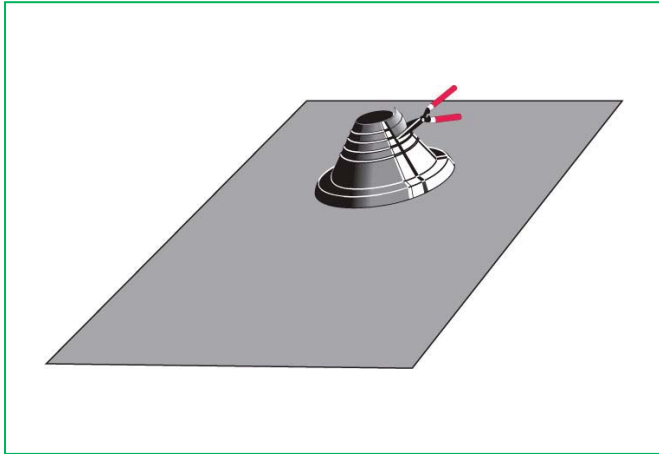
Silicone Red



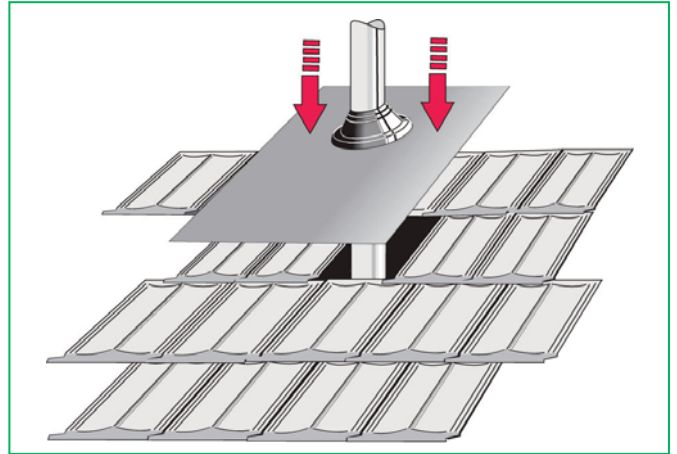
## V-SEAL Pipe Flashings

*For slate and tiled roofs*

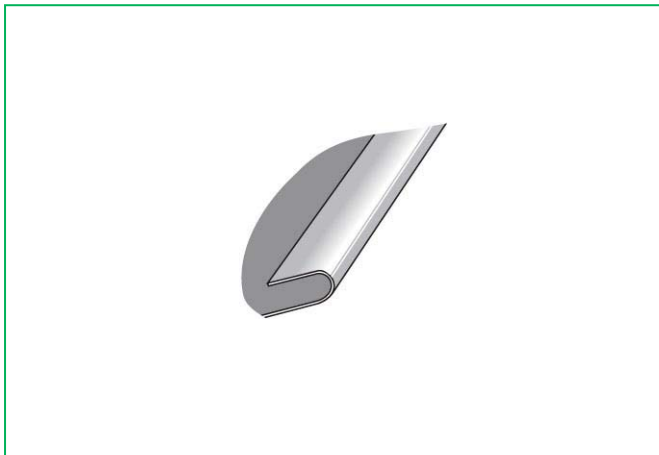
### Installation instructions



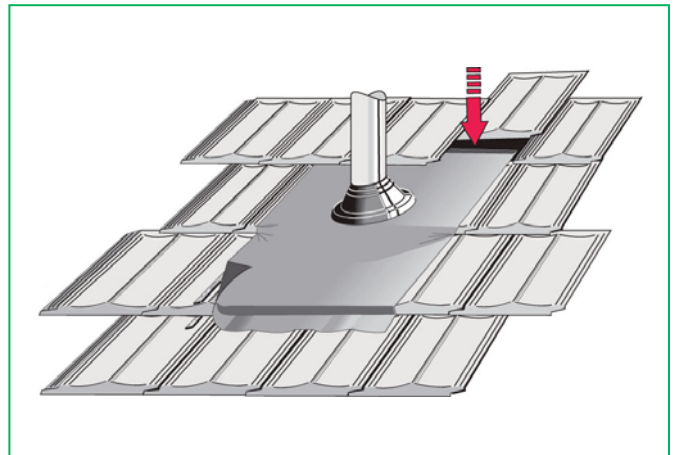
1. Cut rubber cone to size along marked measurement lines using sharp pair of scissors or knife. Hole size of cone should be cut minimum 15mm smaller than outside diameter of pipe.



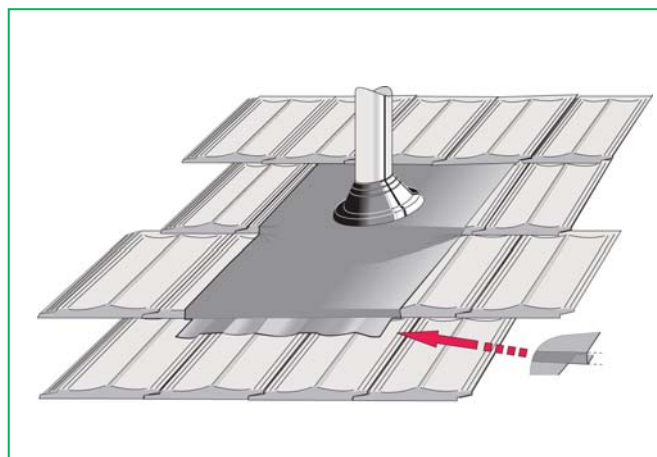
2. Use water as lubricant when sliding flashing down pipe.



3. Form an anti-capillary fold at the top of the base as shown.



4. Place flashing under the top tiles.



5. Hand form base all around and cut and form holding tabs as shown.



## Pipe Flashings Product Selector Guide

*For slate and tiled roofs*

- ◆ Suitable for 0-25° roof pitches
- ▲ Suitable for 0-45° roof pitches
- ▼ Suitable for 0-60° roof pitches

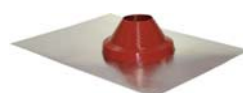
Product	VL Series					VA Series						
Pipe Diameter	5-50	45-90	100-150	180-255	150-280	5-50	45-90	100-165	100-225	180-255	180-350	300-450
5 mm	▲	-	-	-	-	▲	-	-	-	-	-	-
10 mm	▲	-	-	-	-	▲	-	-	-	-	-	-
15 mm	▲	-	-	-	-	▲	-	-	-	-	-	-
20 mm	▲	-	-	-	-	▲	-	-	-	-	-	-
25 mm	▲	-	-	-	-	▲	-	-	-	-	-	-
30 mm	▲	-	-	-	-	▲	-	-	-	-	-	-
40 mm	▲	-	-	-	-	▲	-	-	-	-	-	-
50 mm	◆	▲	-	-	-	◆	▲	-	-	-	-	-
65 mm	-	▲	-	-	-	-	▲	-	-	-	-	-
80 mm	-	◆	-	-	-	-	◆	-	-	-	-	-
90 mm	-	◆	-	-	-	-	◆	-	-	-	-	-
100 mm	-	-	▲	-	-	-	-	▲	▼	-	-	-
125 mm	-	-	◆	-	-	-	-	▲	▼	-	-	-
150 mm	-	-	◆	-	▲	-	-	◆	▼	-	-	-
175 mm	-	-	-	▲	▲	-	-	-	▲	▲	▲	-
200 mm	-	-	-	▲	▲	-	-	-	▲	▲	▲	-
225 mm	-	-	-	◆	▲	-	-	-	▲	◆	▲	-
250 mm	-	-	-	◆	▲	-	-	-	-	◆	▲	-
275 mm	-	-	-	-	◆	-	-	-	-	-	▲	-
300 mm	-	-	-	-	-	-	-	-	-	-	◆	▲
325 mm	-	-	-	-	-	-	-	-	-	-	◆	▲
350 mm	-	-	-	-	-	-	-	-	-	-	◆	▲
375 mm	-	-	-	-	-	-	-	-	-	-	-	▲
400 mm	-	-	-	-	-	-	-	-	-	-	-	▲
425 mm	-	-	-	-	-	-	-	-	-	-	-	▲
450 mm	-	-	-	-	-	-	-	-	-	-	-	▲



VL Series



VA Series



# Pipe Flashing Systems *For solar systems*



Pipe flashings are a vital component required in the installation of roof mounted solar thermal and solar PV (photovoltaic) systems, as they provide a flexible, durable, weatherproof seal where solar pipework and sensor cabling pass through the roof.

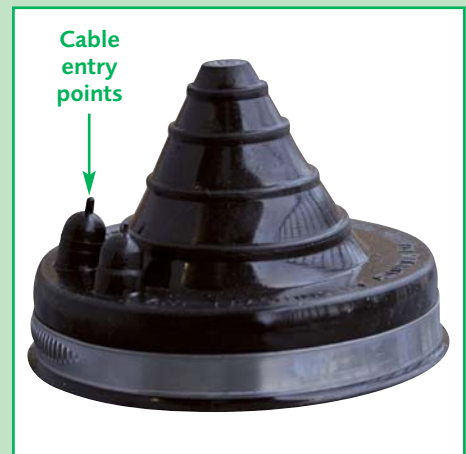
V-SEAL pipe flashings have been carefully designed taking into account input and requests from the experts in the solar market to provide a comprehensive solution for this important application.

## V-SEAL solar pipe flashings for slate and tiled roofs

The BLACK SILICONE cone is unique to the V-SEAL pipe flashings range. It has been specifically developed to meet the requirements of solar experts and building owners who are looking for aesthetic appearance, without compromise on quality. The BLACK SILICONE replaces the red silicone normally associated with these products and provides excellent temperature resistance of  $-60^{\circ}\text{C}$  to  $+240^{\circ}\text{C}$ . This flexible rubber cone suits pipe diameters from 5mm to 50mm, enabling it to seal around plain pipework or insulated pipework on a variety of roof pitches. Another feature specifically designed for the solar market is the two cable entry points, for sealing around any cabling and temperature sensor wiring. The cones are made from materials of highest quality, are resistant to ozone and UV light and come with a 20 year product replacement warranty from the manufacturers. V-SEAL pipe flashings provide professional fit and forget solutions for total peace of mind.

VL Series are manufactured using Acrylead which is a unique, baked, acrylic primer coating for lead sheet. This Acrylead finish ensures safe handling and inhibits water coming into contact with lead and its oxides, which helps prevent lead run off staining the roof and entering ground water systems.

The BLACK SILICONE cone is fitted to either an acrylead or aluminium base and is available in two different configurations:



Single cone – for installations with flow and return pipework passing through the roof on either side of the solar panel. 2 pipe flashings required per installation.



Duo cone – for installations with flow and return pipework passing through the roof at the same side of the solar panel. 1 pipe flashing required per installation.

The following two products are part of the V-SEAL VL Series and are also detailed on page 15:

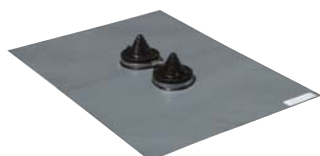
### VL Series 5mm-50mm TWIN PACK – 2 x lead base flashings in one pack



Product Code	Material	Colour	Temperature Resistance	Pipe Diameters (mm)		Base Dimensions (mm)	Pack Quantity
				0-25° Pitch	0-45° Pitch		
<b>VL SB 5-50 TWIN PACK</b>	<b>Silicone</b>	<b>Black</b>	-60°C to +240°C	5-50	5-40	Acrylead 410 x 490	2

Solar system installations often require a pipe flashing for the flow and return pipework on either side of the solar panel. To ensure ease of handling and product integrity, this product comes packed with two flashings in one carton.

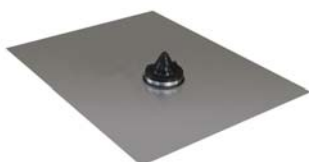
### VL Series 5mm-50mm DUO – 2 x cones on lead base



Product Code	Material	Colour	Temperature Resistance	Pipe Diameters (mm)		Base Dimensions (mm)	Pack Quantity
				0-25° Pitch	0-45° Pitch		
<b>VL SB 5-50 DUO</b>	<b>Silicone</b>	<b>Black</b>	-60°C to +240°C	5-50	5-40	Acrylead 450 x 600	1

The following two products are part of the V-SEAL VA Series and are also detailed on page 16:

### VA Series 5mm-50mm



Product Code	Material	Colour	Temperature Resistance	Pipe Diameters (mm)		Base Dimensions (mm)	Pack Quantity
				0-25° Pitch	0-45° Pitch		
<b>VA SB 5-50</b>	<b>Silicone</b>	<b>Black</b>	-60°C to +240°C	5-50	5-40	450 x 600	5

### VA Series 5mm-50mm DUO – 2 x cones on aluminium base



Product Code	Material	Colour	Temperature Resistance	Pipe Diameters (mm)		Base Dimensions (mm)	Pack Quantity
				0-25° Pitch	0-45° Pitch		
<b>VA SB 5-50 DUO</b>	<b>Silicone</b>	<b>Black</b>	-60°C to +240°C	5-50	5-40	450 x 600	5

## V-SEAL solar pipe flashings for metal roofs

The following two products are part of the V-SEAL MS Series and are also detailed on page 9:

### MS Series 3mm-25mm



Product Code	Material	Colour	Temperature Resistance	Pipe Diameters (mm)		Base Dimensions (mm)	Pack Quantity
				0-25° Pitch	0-45° Pitch		
<b>MS EB 3-25</b>	<b>EPDM</b>	<b>Black</b>	-40°C to +115°C	3-25	3-20	75 x 75	20
<b>MS SR 3-25</b>	<b>Silicone</b>	<b>Red</b>	-60°C to +240°C	3-25	3-20	75 x 75	20

### MS Series 5mm-50mm



Product Code	Material	Colour	Temperature Resistance	Pipe Diameters (mm)		Base Dimensions (mm)	Pack Quantity
				0-25° Pitch	0-45° Pitch		
<b>MS EB 5-50</b>	<b>EPDM</b>	<b>Black</b>	-40°C to +115°C	5-50	5-45	115 x 115	20
<b>MS SR 5-50</b>	<b>Silicone</b>	<b>Red</b>	-60°C to +240°C	5-50	5-45	115 x 115	20

# Pipe Flashing Systems

*For flat roofs*



V-SEAL pipe flashings are specifically designed for use with flat roofing systems. They provide a durable, flexible, weatherproof seal around pipes, vents and other penetrations that pass through bituminous or PVC and TPO roofing membranes.

## FR Series

– Felt Roofseal pipe flashings for pipe diameters from 0mm to 830mm (pages 22-24).

## RFR Series

– Felt Roofseal pipe flashings for use in retrofit applications for pipe diameters from 19mm to 250mm (page 25).

## MR Series

– Pipe flashings for use with PVC, TPO and other types of membranes, for pipe diameters from 20mm to 125mm (page 26).

## Providing solutions by design – FR Series

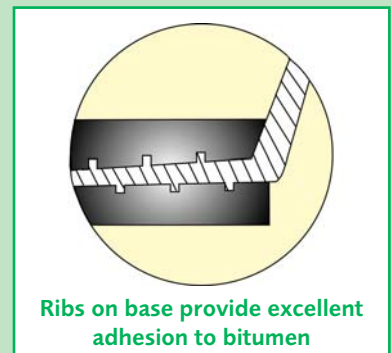


### Base

The large circular base is uniquely designed with concentric rectangular ribs. This ensures the best possible adhesion of the roof system to the pipe flashing.

### Sleeve

Each pipe flashing suits more than one pipe diameter and is



simply cut to the required size as needed. Each step has the pipe diameters marked on it for easy identification of pipe sizes and helps guide an even cut around the sleeve. The stepped configuration also ensures good surface contact with the pipe and each pipe flashing is supplied with a stainless steel screw clamp to provide a tight seal. Each size of pipe flashing maintains an upstand of approximately 150mm, in accordance with recommended flat roofing good practices. The flexibility of the sleeve allows for expansion, contraction and building movement whilst maintaining a weatherproof seal.

## Materials

The pipe flashings are made from EPDM and are resistant to acids, ozone and ultra violet light. The manufacturer gives a 10 year warranty for the EPDM material.

### Ethylene Propylene Diene Monomer (EPDM Rubber):

Temperature range  $-30^{\circ}\text{C}$  to  $+90^{\circ}\text{C}$ .

(Short term fluctuations between  $-50^{\circ}\text{C}$  and  $+120^{\circ}\text{C}$  are permissible).

Installation temperatures for liquid bitumen can be up to  $240^{\circ}\text{C}$ .

Stainless steel pipe clamp.

## To order FR Series:

Our product codes have been formulated to make selecting the correct pipe flashing as simple as possible by providing the information required in a concise manner, showing type, material, colour and pipe diameters.

Example Code:



Use the information provided ensuring the pipe diameter of the penetration you need to seal falls comfortably within the dimensions shown. Please note that these flashings are made from flexible EPDM rubber and will stretch to accommodate the pipe diameters that are between the sizes listed.

FR Series							
0mm-40mm	Product Code <b>FR EB 0-40</b>	Material <b>EPDM</b>	Colour <b>Black</b>	Temperature Resistance -30°C to +90°C	Pipe Diameters (mm) 0-40	Base Diameter (mm) 425	Pack Quantity 20
50mm-60mm	Product Code <b>FR EB 50-60</b>	Material <b>EPDM</b>	Colour <b>Black</b>	Temperature Resistance -30°C to +90°C	Pipe Diameters (mm) 50-60	Base Diameter (mm) 462	Pack Quantity 20
75mm-90mm	Product Code <b>FR EB 75-90</b>	Material <b>EPDM</b>	Colour <b>Black</b>	Temperature Resistance -30°C to +90°C	Pipe Diameters (mm) 75-90	Base Diameter (mm) 492	Pack Quantity 20
110mm-125mm	Product Code <b>FR EB 110-125</b>	Material <b>EPDM</b>	Colour <b>Black</b>	Temperature Resistance -30°C to +90°C	Pipe Diameters (mm) 110-125	Base Diameter (mm) 527	Pack Quantity 20
130mm-140mm	Product Code <b>FR EB 130-140</b>	Material <b>EPDM</b>	Colour <b>Black</b>	Temperature Resistance -30°C to +90°C	Pipe Diameters (mm) 130-140	Base Diameter (mm) 540	Pack Quantity 20
150mm-175mm	Product Code <b>FR EB 150-175</b>	Material <b>EPDM</b>	Colour <b>Black</b>	Temperature Resistance -30°C to +90°C	Pipe Diameters (mm) 150-175	Base Diameter (mm) 576	Pack Quantity 10
200mm-250mm	Product Code <b>FR EB 200-250</b>	Material <b>EPDM</b>	Colour <b>Black</b>	Temperature Resistance -30°C to +90°C	Pipe Diameters (mm) 200-250	Base Diameter (mm) 637	Pack Quantity 10
275mm-325mm	Product Code <b>FR EB 275-325</b>	Material <b>EPDM</b>	Colour <b>Black</b>	Temperature Resistance -30°C to +90°C	Pipe Diameters (mm) 275-325	Base Diameter (mm) 712	Pack Quantity 5
350mm-400mm	Product Code <b>FR EB 350-400</b>	Material <b>EPDM</b>	Colour <b>Black</b>	Temperature Resistance -30°C to +90°C	Pipe Diameters (mm) 350-400	Base Diameter (mm) 787	Pack Quantity 5
490mm-530mm	Product Code <b>FR EB 490-530</b>	Material <b>EPDM</b>	Colour <b>Black</b>	Temperature Resistance -30°C to +90°C	Pipe Diameters (mm) 490-530	Base Diameter (mm) 800	Pack Quantity 1
590mm-630mm	Product Code <b>FR EB 590-630</b>	Material <b>EPDM</b>	Colour <b>Black</b>	Temperature Resistance -30°C to +90°C	Pipe Diameters (mm) 590-630	Base Diameter (mm) 900	Pack Quantity 1
690mm-730mm	Product Code <b>FR EB 690-730</b>	Material <b>EPDM</b>	Colour <b>Black</b>	Temperature Resistance -30°C to +90°C	Pipe Diameters (mm) 690-730	Base Diameter (mm) 1000	Pack Quantity 1
790mm-830mm	Product Code <b>FR EB 790-830</b>	Material <b>EPDM</b>	Colour <b>Black</b>	Temperature Resistance -30°C to +90°C	Pipe Diameters (mm) 790-830	Base Diameter (mm) 1100	Pack Quantity 1





## FR Series Square Flashings

The FR Series Square flashings are purpose designed to seal square section pipes and penetrations through felt roofs. They share all the other features of the FR Series and also require a special Square clamp to suit the size of pipe (please see information below).



### FR Series Square Flashing 40mm-70mm

40mm-70mm	Product Code	Material	Colour	Temperature Resistance	Square Sections (mm)	Base Diameter (mm)	Pack Quantity
	FR SQ EB 40-70	EPDM	Black	-30°C to +90°C	40 x 40 – 70 x 70	470	20

### FR Series Square Flashing 80mm-140mm

80mm-140mm	Product Code	Material	Colour	Temperature Resistance	Square Sections (mm)	Base Diameter (mm)	Pack Quantity
	FR SQ EB 80-140	EPDM	Black	-30°C to +90°C	80 x 80 – 140 x 140	555	20

### FR Series Square Clamps

Square Clamps	Product Code	Material (mm)	Square Sections (mm)
	FR SQ CP 40	Galvanised Steel	40 x 40
	FR SQ CP 50	Galvanised Steel	50 x 50
	FR SQ CP 60	Galvanised Steel	60 x 60
	FR SQ CP 70	Galvanised Steel	70 x 70
	FR SQ CP 80	Galvanised Steel	80 x 80
	FR SQ CP 100	Galvanised Steel	100 x 100
	FR SQ CP 120	Galvanised Steel	120 x 120
	FR SQ CP 140	Galvanised Steel	140 x 140

## FR Series Vapourseal

The FR Series Vapourseal maintains roof system integrity by sealing between the pipe and the vapour control layer. It acts as a barrier to block moisture entering the roof structure and stops damage to the roof. It also seals against air leakage which helps to meet building regulation requirements.



### FR Series Vapourseal 50mm

50mm	Product Code	Material	Colour	Temperature Resistance	Pipe Diameters (mm)	Base Diameter (mm)	Pack Quantity
	FR VP EB 50	EPDM	Black	-30°C to +90°C	50	350	20

### FR Series Vapourseal 75mm

75mm	Product Code	Material	Colour	Temperature Resistance	Pipe Diameters (mm)	Base Diameter (mm)	Pack Quantity
	FR VP EB 75	EPDM	Black	-30°C to +90°C	75	375	20

### FR Series Vapourseal 110mm

110mm	Product Code	Material	Colour	Temperature Resistance	Pipe Diameters (mm)	Base Diameter (mm)	Pack Quantity
	FR VP EB 110	EPDM	Black	-30°C to +90°C	110	410	20

## Providing solutions by design – RFR Series



The RFR Series is for retrofit applications, where the pipe flashing needs to be cut and wrapped around the penetration due to obstructions such as cowls, brackets or collars. The base design and materials used are exactly the same as the FR Series detailed on page 22. The sleeve also shares the same features but has an additional design characteristic which makes the products suitable for retrofit applications. The retrofit seal is already formed and contains a sealant compound which forms a weatherproof seal when the edges of the seal are joined

together. The integrity of the vertical joint is maintained by securing the seam with an aluminium locking clip.

Use the information provided ensuring the pipe diameter of the penetration you need to seal falls comfortably within the dimensions shown. Please note that these flashings are made from flexible EPDM rubber and will stretch to accommodate the pipe diameters that are between the sizes listed.



### RFR Series 19mm-90mm

19mm-90mm	Product Code	Material	Colour	Temperature Resistance	Pipe Diameters (mm)	Base Diameter (mm)	Pack Quantity
	RFR EB 19-90	EPDM	Black	-30°C to +90°C	19-90	420	1

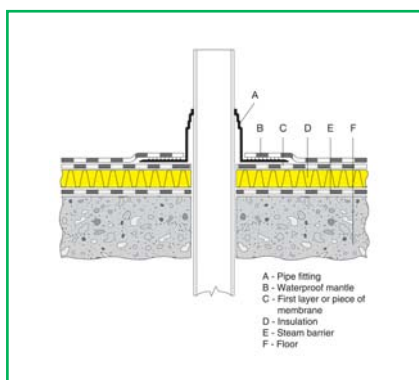
### RFR Series 110mm-170mm

110mm-170mm	Product Code	Material	Colour	Temperature Resistance	Pipe Diameters (mm)	Base Diameter (mm)	Pack Quantity
	RFR EB 110-170	EPDM	Black	-30°C to +90°C	110-170	510	1

### RFR Series 160mm-250mm

160mm-250mm	Product Code	Material	Colour	Temperature Resistance	Pipe Diameters (mm)	Base Diameter (mm)	Pack Quantity
	RFR EB 160-250	EPDM	Black	-30°C to +90°C	160-250	595	1

## Installation instructions for FR Series and RFR Series



Start by determining the pipe diameter. If necessary, cut the sleeve to the correct size.

Dress the base layer of the felt tightly around the pipe.

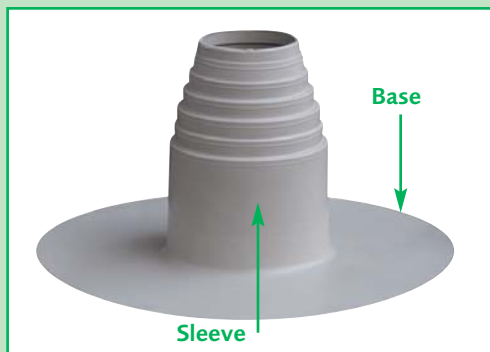
The base flange of the pipe flashing should always be bonded between two waterproofing layers. If a single layer membrane is being used, bond an additional piece of the waterproofing layer beneath the pipe flashing flange. This piece should be about 300mm larger than the outer diameter of the flange.

Bond the base flange of the pipe flashing to the base layer.

Cut an opening for the pipe in the upper layer of felt (the felt should only cover the base flange) and bond down onto the base of the pipe flashings. If required, seal between the upper layer of felt and the pipe flashing with a suitable sealing compound.

Fit the stainless steel clamp.

## Providing solutions by design – MR Series



MR Series pipe flashings are particularly for use with roofing membranes and are available in three different materials.

EPDM – for use with built up felt and mastic asphalt roof finishes.

PVC – for use with PVC single ply membranes.

PP – for use with TPO single ply membranes.

### Base

The circular base provides a large surface area to ensure the best possible adhesion of the roof system to the pipe flashing.

### Sleeve

Each flashing suits more than one pipe diameter and is simply cut to the required size as needed. The stepped configuration ensures good surface contact with the pipe and each flashing is supplied with a stainless steel screw clamp to provide a tight seal. The flexibility of the sleeve allows for expansion, contraction and building movement whilst maintaining a weatherproof seal.

### Materials

#### Ethylene Propylene Diene Monomer (EPDM) Rubber:

Temperature range  $-40^{\circ}\text{C}$  to  $+120^{\circ}\text{C}$ .

#### Polyvinyl Chloride (PVC):

Temperature range  $-25^{\circ}\text{C}$  to  $+90^{\circ}\text{C}$ .

#### Polyolefin Polypropylene (PP):

Temperature range  $-40^{\circ}\text{C}$  to  $+120^{\circ}\text{C}$ .

The manufacturer gives a 10 year warranty for the materials.

## To order MR Series:

Our product codes have been formulated to make selecting the correct pipe flashing as simple as possible by providing the information required in a concise manner, showing type, material, colour and pipe diameters.

Example Code:

Use the information provided ensuring the pipe diameter of the penetration you need to seal corresponds with the dimensions shown.

### MR Series 20mm



Product Code	Material	Colour	Temperature Resistance	Pipe Diameters (mm)	Base Diameter (mm)	Pack Quantity
<b>MR EB 20</b>	<b>EPDM</b>	<b>Black</b>	$-40^{\circ}\text{C}$ to $+120^{\circ}\text{C}$	20	155	25
<b>MR PG 20</b>	<b>PVC</b>	<b>Grey</b>	$-25^{\circ}\text{C}$ to $+90^{\circ}\text{C}$	20	155	25
<b>MR TG 20</b>	<b>PP</b>	<b>Grey</b>	$-40^{\circ}\text{C}$ to $+120^{\circ}\text{C}$	20	155	25

### MR Series 34mm-90mm



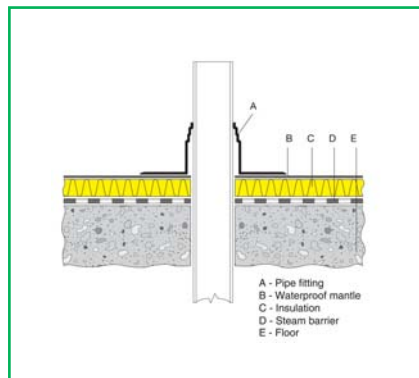
Product Code	Material	Colour	Temperature Resistance	Pipe Diameters (mm)	Base Diameter (mm)	Pack Quantity
<b>MR EB 34-90</b>	<b>EPDM</b>	<b>Black</b>	$-40^{\circ}\text{C}$ to $+120^{\circ}\text{C}$	34, 50, 60, 75, 80, 90	340	25
<b>MR PG 34-90</b>	<b>PVC</b>	<b>Grey</b>	$-25^{\circ}\text{C}$ to $+90^{\circ}\text{C}$	34, 50, 60, 75, 80, 90	340	25
<b>MR TG 34-90</b>	<b>PP</b>	<b>Grey</b>	$-40^{\circ}\text{C}$ to $+120^{\circ}\text{C}$	34, 50, 60, 75, 80, 90	340	25

## MR Series 75mm-125mm



Product Code	Material	Colour	Temperature Resistance	Pipe Diameters (mm)	Base Diameter (mm)	Pack Quantity
<b>MR EB 75-125</b>	<b>EPDM</b>	<b>Black</b>	–40°C to +120°C	75, 80, 90, 100, 110, 115, 125	365	25
<b>MR PG 75-125</b>	<b>PVC</b>	<b>Grey</b>	–25°C to +90°C	75, 80, 90, 100, 110, 115, 125	365	25
<b>MR TG 75-125</b>	<b>PP</b>	<b>Grey</b>	–40°C to +120°C	75, 80, 90, 100, 110, 115, 125	365	25

## Installation instructions for MR Series with single ply membranes



Start by determining the pipe diameter. If necessary, cut the sleeve to the correct size.

Place the pipe flashing over the pipe and weld the base flange to the waterproofing membrane with a hot air gun or relevant adhesive.

Fit the stainless steel clamp.

Installation instructions for MR Series with felt roof systems – see page 25.

