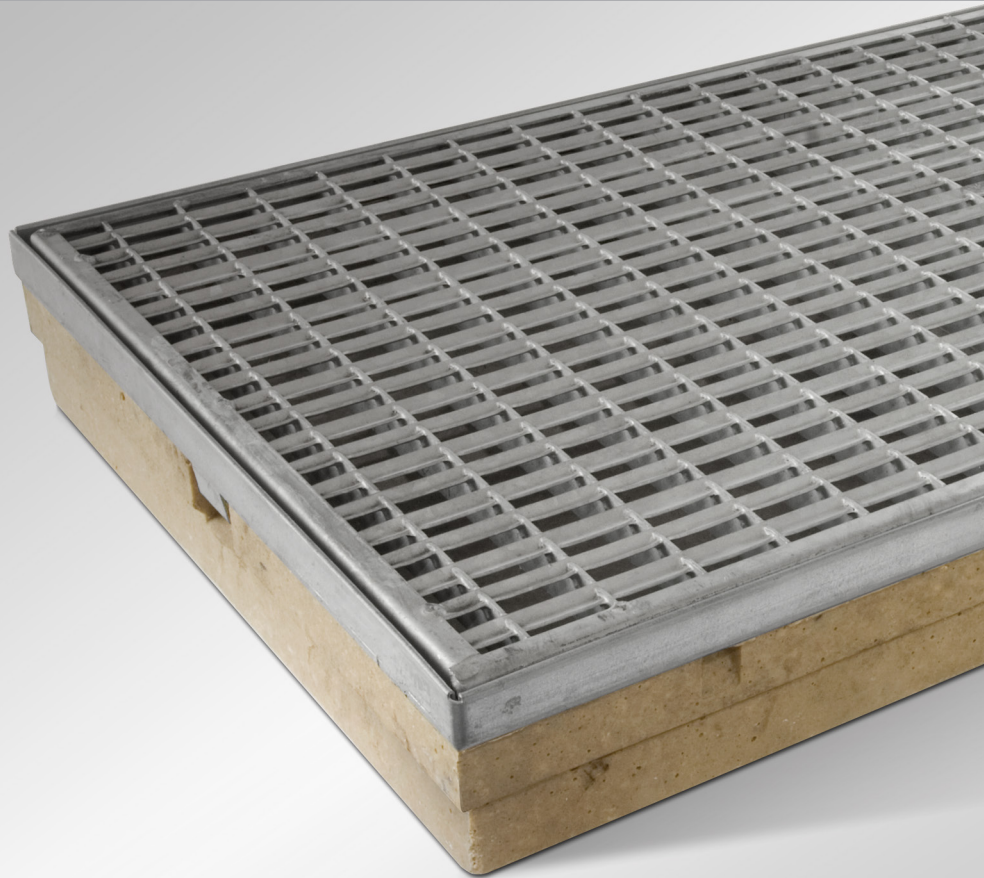


Uniclass L5367	EPIC E482
Cl/SfB (71.3)	

# ACO Water Management: Building + Landscape

## ACO DrainMat

- ✓ Provides level threshold drainage to eliminate the risk of water ponding at house entrances
- ✓ Easy and quick to install, only 80mm deep
- ✓ Mat profile dislodges dirt from footwear easily
- ✓ Four styles of surface finish available in three sizes
- ✓ Compliant with Part M (England and Wales) and Section 4 (Scotland) Building Regulations



## *ACO DrainMat*

### **Matwell domestic level threshold door drainage**

ACO DrainMat is a high quality matwell assembly, which eliminates the risk of water ponding at house entrances

The system gives the appeal of a traditional matwell and is available in a choice of four different mat surfaces: robust galvanised steel mesh, tough aluminium and rubber, and two colours of carpet with aluminium.

ACO DrainMat comes in two types of bases; polymer or polypropylene. The polymer concrete base is available in three sizes and the polypropylene in one size.

The system is compliant with Part M of the Building Regulations for England and Wales and Section 4 of the Scottish Building Standards.

#### **Typical applications**

- ▶ Threshold Drainage



# ACO DrainMat

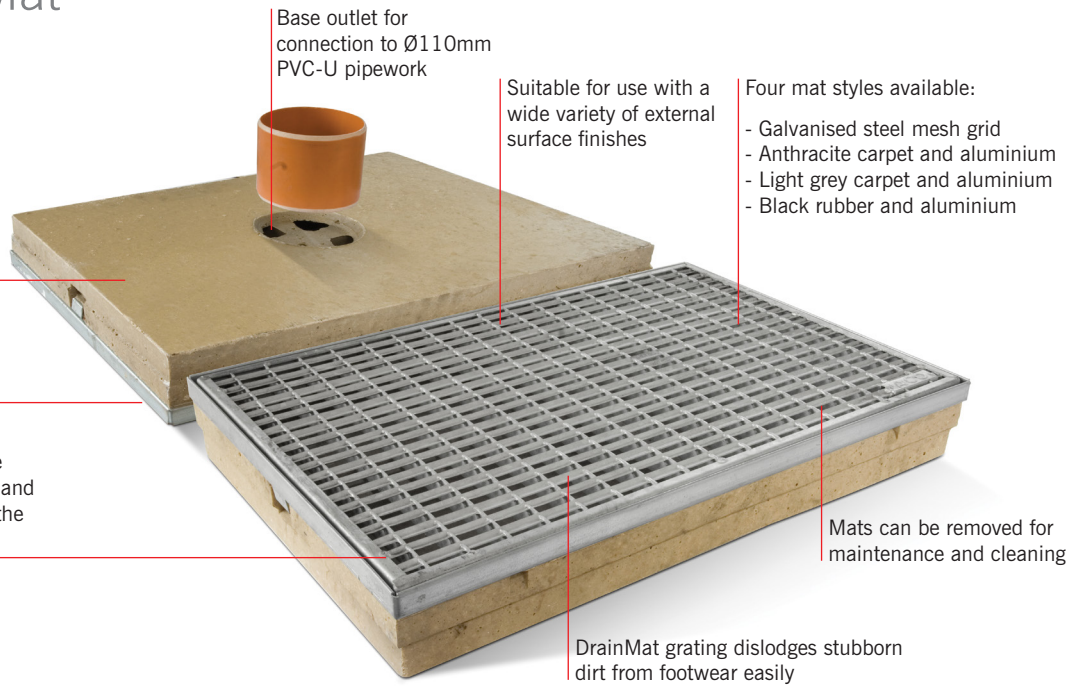
## System Overview

## Features

Tough polymer concrete base available in three sizes. Polypropylene base available in one size

Unobtrusive galvanised steel protective edge rail (polymer concrete base only)

Compliant with Part M of the Building Regulations for England and Wales and Section 4 of the Scottish Building Standards



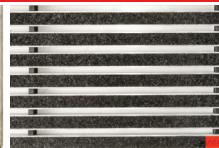
## ACO DRAINMAT ACCESSORIES



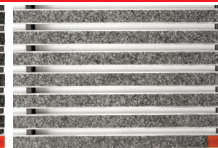
Drain union



Galvanised steel mesh grid



Anthracite carpet and aluminium mat



Light grey carpet and aluminium mat



Black rubber and aluminium mat



ACO DrainMat polypropylene base (image shows base with mat, mat supplied separately)

## ACO DrainMat bases

Product code	Description	Length (mm)	Width overall (mm)	Depth overall (mm)	Weight (kg)
0398	Polymer concrete base 600 x 400	600	400	80	12.0
0399	Polymer concrete base 750 x 500	750	500	80	18.0
0400	Polymer concrete base 1000 x 500	1000	500	80	21.6
82400	Polypropylene base 600 x 400	600	400	75	1.5

## Mat styles

Product code	Description	Length (mm)	Width overall (mm)	Depth overall (mm)	Weight (kg)
1207	Galvanised steel mesh grid 600 x 400	600	400	20	4.0
1208	Galvanised steel mesh grid 750 x 500	750	500	20	6.3
1209	Galvanised steel mesh grid 1000 x 500	1000	500	20	8.6
1210	Anthracite carpet and aluminium 600 x 400	600	400	20	3.5
1211	Anthracite carpet and aluminium 750 x 500	750	500	20	4.7
1212	Anthracite carpet and aluminium 1000 x 500	1000	500	20	6.3
02180	Light grey carpet and aluminium 600 x 400	600	400	20	3.5
02181	Light grey carpet and aluminium 750 x 500	750	500	20	4.7
02182	Light grey carpet and aluminium 1000 x 500	1000	500	20	6.3
1213	Black rubber and aluminium 600 x 400	600	400	20	3.5
1214	Black rubber and aluminium 750 x 500	750	500	20	5.6
1215	Black rubber and aluminium 1000 x 500	1000	500	20	7.5

Product code	Description	Length (mm)	Width overall (mm)	Depth overall (mm)	Weight (kg)
0056	820 Drain union PVC-U Ø110mm	100	Ø110	-	0.1

## Specification Clause

The matwell shall be ACO DrainMat as supplied by ACO Technologies plc. All materials and components within the system shall be supplied by the manufacturer. The system shall include a base manufactured from \*(polymer concrete or polypropylene) with provision for connection to Ø110mm PVC-U drainage pipework. The base shall be installed with the manufacturer's removable drain mat in \*(galvanised steel grid or anthracite carpet and aluminium or light grey carpet and aluminium or black rubber and aluminium).

The system shall be installed in accordance with the manufacturer's printed instructions, and the work carried out as specified on drawing no. † (... ..) and in accordance with recognised good practice. Standards of work shall generally be as specified in BS EN 752 and BS 8000:Part 14.

\*delete non-appropriate information  
†insert drawing reference

**Note: A specification in NBS format is available to download from [www.thenbs.com](http://www.thenbs.com) or [www.aco.co.uk](http://www.aco.co.uk).**

## ACO Technologies plc

ACO Business Park, Hitchin Road, Shefford, Bedfordshire SG17 5TE  
Tel: 01462 816666 Fax: 01462 815895  
e-mail: [technologies@aco.co.uk](mailto:technologies@aco.co.uk) website: [www.aco.co.uk](http://www.aco.co.uk)