

NEW Sampling & Distribution System

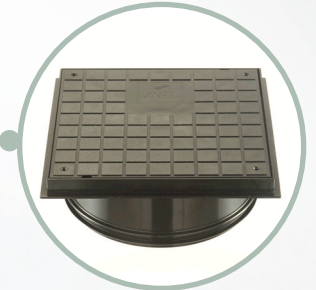


Plumbing & Drainage

Brett Martin's new Sampling and Distribution System is a gravity fed sub-surface irrigation solution which provides for the distribution of pre-treated sewage effluent from single domestic dwellings to an underground disposal area.



B3151 - Riser
185mm deep riser to accommodate deeper inverts.



B3153 - Frame and Cover
Removable cover to facilitate maintenance and inspection.



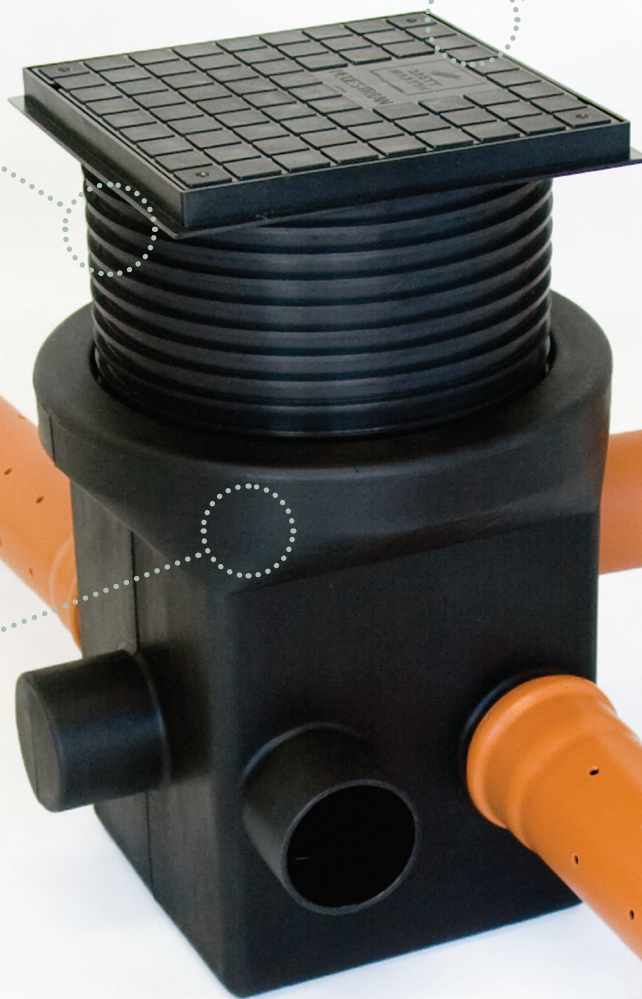
4123 - Percolation pipe
110mm Perforated pipe through which pre-treated effluent is discharged to the infiltration trench or bed.



4406 - Distribution Pipe
110mm Solid-wall single socketed pipe used to connect the distribution chamber to the septic system via a single inlet point.



BDSCI - Distribution Chamber
Chamber allowing even gravity distribution of pre-treated effluent via the distribution pipes.



KEY BENEFITS

- Robust, sturdy polyethylene chamber is easy to transport, handle and install
- Five blanked outlets allow on-site modifications as required
- Inlet grommet provides superior sealing between pipe & chamber
- Solid wall and perforated pipes are socket jointed in compliance with regulations
- Perforated pipe exceeds regulations with 1960mm² perforations per linear metre
- Percolations are sized and spaced to ensure granular fill cannot enter pipe and effluent can flow easily without clogging
- Watertight, heavy duty riser accommodates deeper invert requirements
- The frame consists of 110mm height and tilt adjustable spigot
- Secure cover in frame reduces risk of accident, injury or removal
- Manufactured in accordance to Northern Ireland Environment Agency Water (Northern Ireland) Order 1999
- Manufactured in accordance to Environmental Protection Agency (EPA) - Code of Practice: Wastewater Treatment and Disposal Systems Serving Single Houses

