



**DeckProof Flooring System**  
Timber Specification



# Timber Specification

Please note all DeckProof materials cure within 20 minutes so only mix material for an area that can be covered within this time. Please consult the mixing section of this specification before application.

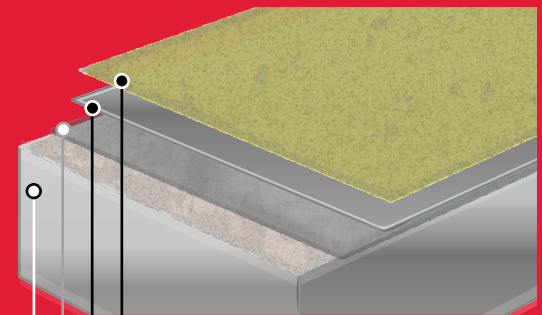
### **Preparation:**

Prior to commencing the existing surface should be thoroughly cleaned down to remove all dirt, dust or other contaminants especially when coating existing decking. It is the contractors responsibility to determine the preferred method of cleaning. The main criteria are to provide a clean, dry surface to ensure the materials can key to the surface.

**DeckProof Primer** On completion of the cleaning proceed to coating the whole of the roof area and upstands with DeckProof Primer. Primer can be applied at a rate of 3-4 sq/m per KG using a brush or smooth lambswool rollers. Please note if only using an anti-skid layer detailing of upstands may not be necessary

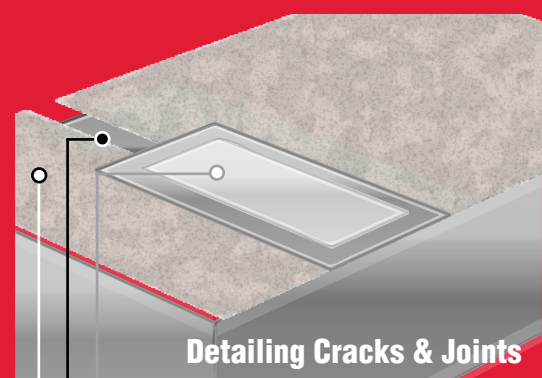
**Joints In Decking** should be detailed with Joint Tape embedded into Detailing Primer along all joints. For larger gaps Crack and Joint filler should be applied to either side of the joint and then covered with Detailing Primer and Joint Tape.

**Fixings** should finish flush or just below the decking to avoid subsequent damage. Any exposed heads should be coated with Crack and Joint filler.



#### **DeckProof System**

- **Substrate**  
Cleaned surface ready to accept Primer.
- **Primer**  
Primer is used to seal the surface and provide extra adhesion.
- **DeckProof System**  
DeckProof Waterproof Anti-Skid System 2mm thickness in total. (1mm Waterproof, 1mm Anti-Skid)



#### **Detailing Cracks & Joints**

- **Substrate**  
Cleaned surface pre coated in DeckProof Primer.
- **Detailing Primer**  
Coating of Detailing Primer to surface. Larger joints/cracks to be filled with Crack and Joint Filler.
- **Joint Tape**  
Joint tape embedded into Detailing Primer.

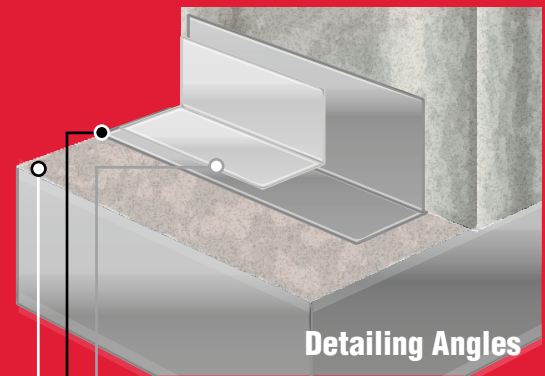
### **Preparation:**

Applying DeckProof Detailing Primer and Joint Tape to upstands, joints etc that require strengthening

Apply a liberal coat of Detailing Primer to the areas concerned. Pre-cut the Joint Tape to size and bed into the wet Detailing Primer (i.e. within 10 minutes). Using a clean brush smooth the Joint Tape out forcing the Detailing Primer through the Joint Tape. Apply extra Detailing Primer as required to fully coat the Joint Tape, spread any surplus Detailing Primer onto the next upstands to be coated. Try to avoid creating creases or blisters in the Joint Tape. Please ensure when using Joint Tape to completely saturate it with the Detailing Primer to ensure maximum adhesion and a smooth finish.

Where the membrane is required to be dressed into a mortar course it should be raked out and re-pointed with Joint and Crack Filler. When applying the DeckProof onto brickwork without dressing into the mortar course the membrane should be finished in the middle of the brick course.

**Outlets** inspect the drain ware and outlets to ensure the free flow of waste water. Remove any covers or gratings, apply Joint Tape embedded into Detailing Primer as described above as far into the outlet as possible.



#### **Substrate/Wall**

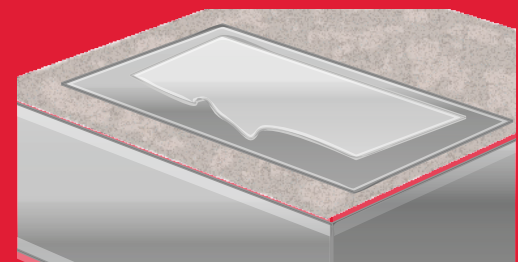
Cleaned surface pre coated in DeckProof Primer.

#### **Detailing Primer**

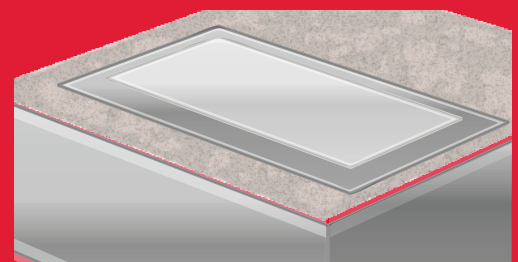
Coating of Detailing Primer to wall and surface.

#### **Joint Tape**

Joint tape embedded into Detailing Primer.

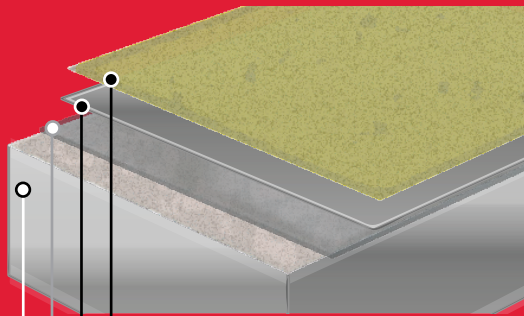


**Please ensure** that when applying Joint Tape that it is completely flat and free of gaps or fish mouths.



#### **The perfect finish for Joint Tape**

leaves it flat to the surface and free of gaps fully embedded into the Detailing Primer below.



**Waterproof Anti-Skid**

- **Substrate**  
Cleaned surface ready to accept Primer.
- **Primer**  
Primer is used to seal the surface and provide extra adhesion.
- **DeckProof System**  
DeckProof Waterproof Anti-Skid System 2mm thickness in total. (1mm Waterproof, 1mm Anti-Skid)

**Detailing** Please leave 1 hour for detailing to be fully cured before application of main membrane.

**Coverage Rate**

Please note that on uneven or heavily degraded surfaces more product may be necessary.

**Application: Waterproof Anti-Skid**

**DeckProof Waterproof Anti-Skid** is a two coat application applied by brush or roller. All DeckProof products have a workable time of up to 20 minutes so please ensure you mix only enough product that can cover an area within this time. Please consult the mixing section of this specification before application.

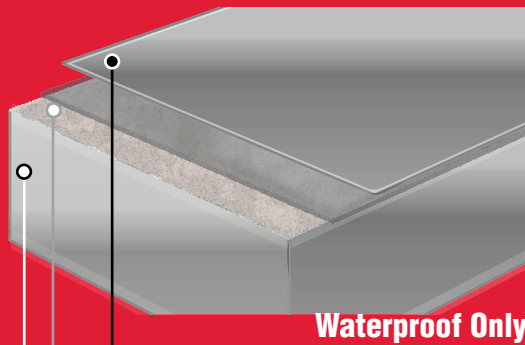
**DeckProof Waterproof** is the first layer in the system and provides the waterproofing element. Apply at a rate of 1KG per sq/m to all areas covered with DeckProof Primer that require waterproofing (i.e.upstands, outlets) using a brush or roller. Please allow 1 hour before applying Anti-Skid layer.

**DeckProof Anti-Skid** is the second layer in the system and provides the anti-skid element. Apply at a rate of 1KG per sq/m to all horizontal surfaces requiring an anti-skid finish using a brush or roller. This surface will be trafficable within 1 hour.

**Note.** Please ensure when applying Anti-Skid to maintain an average thickness of 1mm to ensure the aggregate is not fully submerged in the liquid membrane it is in.

Coats	Product	Thickness	Coverage*
1	Primer	Varies	4sq/m = 1kg
2	DeckProof Waterproof	1mm	1sq/m = 1kg
3	DeckProof Anti-Skid	1mm	1sq/m = 1kg

\*coverage rates may vary depending on surface



**Waterproof Only**

- **Substrate**  
Cleaned surface ready to accept Primer.
- **Primer**  
Primer is used to seal the surface and provide extra adhesion.
- **DeckProof Waterproof**  
DeckProof Waterproof applied in 2 x 0.5mm coats.

**Application: Waterproof Only**

**DeckProof Waterproof Only** is a two coat application applied by brush or roller. All DeckProof products have a workable time of up to 20 minutes so please ensure you mix only enough product that can cover an area within this time. Please consult the mixing section of this specification before application.

**DeckProof Waterproof** is the only layer required in this system after priming and provides the waterproofing element. Apply at a rate of 0.5KG per sq/m in two coats to all areas covered with DeckProof Primer that require waterproofing (i.e. upstands, outlets) using a brush or roller. Please ensure to leave 1 hour between coats of DeckProof Waterproof.

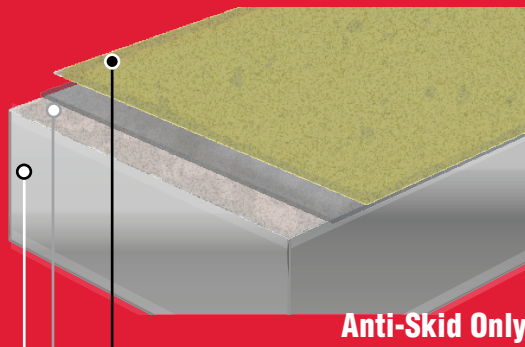
Coats	Product	Thickness	Coverage
1	Primer	Varies	4sq/m = 1kg
2	DeckProof Waterproof	0.5mm	1sq/m = 0.5kg
3	DeckProof Waterproof	0.5mm	1sq/m = 0.5kg

\*coverage rates may vary depending on surface

**Detailing** Please leave 1 hour for detailing to be fully cured before application of main membrane.

**Coverage Rate**

Please note that on uneven or heavily degraded surfaces more product may be necessary.



**Anti-Skid Only**

- **Substrate**  
Cleaned surface ready to accept Primer.
- **Primer**  
Primer is used to seal the surface and provide extra adhesion.
- **DeckProof Anti-Skid**  
DeckProof Anti-Skid applied in 1 x 1mm coat.

**Detailing** Please leave 1 hour for detailing to be fully cured before application of main membrane.

**Coverage Rate**

Please note that on uneven or heavily degraded surfaces more product may be necessary.

**Application: Anti-Skid Only**

DeckProof Anti-Skid Only is a single coat application applied by brush or roller. All DeckProof products have a workable time of 20 minutes so please ensure you mix only enough product that can cover an area within this time. Please consult the mixing section of the specification before application.

DeckProof Anti-Skid is the only layer required in the system after priming and provides the anti-skid element. Apply at a rate of 1KG per sq/m in one coat to all horizontal surfaces requiring an anti-skid finish using a brush or roller. This surface will be trafficable within 1 hour. Any vertical surfaces requiring detailing should be done so with DeckProof Waterproof.

**Note.** Please ensure when applying Anti-Skid to maintain an average thickness of 1mm to ensure the aggregate is not fully submerged in the membrane.

Coats	Product	Thickness	Coverage*
1	Primer	Varies	4sq/m = 1kg
2	DeckProof Anti-Skid	1mm	1sq/m = 1kg

\*coverage rates may vary depending on surface

## Mixing Guide:

### Components

**Part A** Base Product: Primer, DeckProof Waterproof, DeckProof Anti-Skid.

**Part B** Catalyst: White powder, that starts the curing process for all the products in the range.

### Mixing

**DeckProof Primer** has two components a Part A and a Part B. Preferably mixed together using a paddle mixer attached to a drill set at low speed. Once mixed they have a workable life of up to 20 minutes in which to apply the product. Primer has a coverage rate of 3-4 Sq/M per KG.

**DeckProof Waterproof** has two components a Part A and a Part B. Preferably mixed together using a paddle mixer attached to a drill set at low speed. Once mixed it has a workable life of up to 20 minutes in which to apply the product. DeckProof Waterproof has a coverage rate of 1 Sq/M per KG. Applied in 2 x 0.5mm coats.

**DeckProof Anti-Skid** has two components a Part A and a Part B. Preferably mixed together using a paddle mixer attached to a drill set at low speed. Once mixed it has a workable life of up to 20 minutes in which to apply the product. DeckProof Anti-Skid has a coverage rate of 1 Sq/M per KG Applied in a single coat of 1mm.

## Important Notice

Before proceeding with mixing and application please read the notes below.

**1.** All DeckProof products have a working time of up to 20 minutes (see pot life) so only mix enough product for the area that you can cover within this time. This can be achieved by decanting into another container the amount required, and by adding Part B proportionately to the amount decanted.

**2.** Once catalysed (i.e. Part A added to Part B) it is essential that the product is poured onto the surface to be covered, if left in the tin the curing time will rapidly accelerate due to build-up of heat.

**Mix Ratio** The mix ratio of catalyst to base product is fairly tolerant to variations within the ranges of 2-5% addition of catalyst, part packs may be used if care is exercised.

**Please note** more product may be required on uneven or heavily degraded surfaces.

**Limitations** DeckProof should not be applied when the ambient temperature is below 5°C. Do not apply to wet, damp or frozen surfaces or directly prior to rain.

**Caution** Avoid naked flames, Keep out of reach of children. Store between 10°C - 20°C, out of direct sunlight. Please consult data sheets before using DeckProof.

### **Additional Information:**

**Handling** Keep containers upright and tightly closed when not in use and keep from freezing.

**Pot Life** DeckProof has a working life of up to 20 minutes depending on atmospheric conditions:

Pot life @ 20°C: 15 Minutes

Pot life @ 10°C: 20 minutes

### **Curing**

Light Foot Traffic: 1 hour @ 20°C

Vehicular Traffic: 2 Hours @ 20°C

Full chemical resistance: 24 hours @ 20°C

### **Available Colours**

Grey RAL 7001(Silver Grey)

Blue RAL 5015(Sky Blue)

Green RAL 6002(Leaf Green)

Red Red Oxide.

Black Black Oxide

Yellow

White

Other colours available on request (dependant on volume)

**Shelf Life** DeckProof has a shelf life of six months when stored in original unopened containers.





## DeckProof Flooring System Timber Specification

### Things to be aware of when applying to timber:

Because there are so many different types of timber boards available for decking, and because the way in which these boards are manufactured can vary, not only between manufacturers but even between factories of the same manufacturer; LRS cannot know how each of these boards react.

Many types of timber board contain glues that if exposed to liquids can "gas" for some time after they have been manufactured and if not stored in dry conditions can absorb moisture. Both of these can effect all types of liquid applied systems usually resulting in a bubbling or rippling effect on the surface. For this reason we recommend use of the marine ply boards (external grade) for flat roofing.

**NOTE** Ultimately it is the choice of the contractor/client which types of material are used, If the client or contractor chooses any other boards this is entirely at their own risk and it is their responsibility to confirm with the manufacturer this board is compatible with a water-based liquid membranes.

### Contact Us:

EcoProof LTD  
The Enterprise Zone  
Sheffield  
S1 4DP

08443 356 386  
support@ecoproof.com  
ecoproof.com