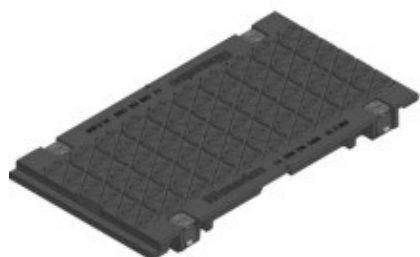
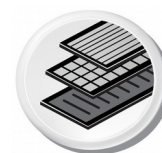


SERVICE CHANNEL 200

SERVICE CHANNEL FASERFIX®SUPER 200 made of fibre-reinforced concrete with 40 mm angle housing, class E 600, Ductile iron solid cover, black



E 600



■ Technical data:

Length mm	Width mm	Height mm	Weight kg	Inlet opening mm	Inlet cross-section cm ² /m	Colour	Item-no.
500	279	40	13,4	0x0	0	black	32073

■ Product description:

SERVICE CHANNEL FASERFIX SUPER 200 - Solid ductile iron cover, black, loading capacity from A 15 up to E 600 according to DIN19580 / EN 1433, CE-conform, L: 500mm, 4-times locking, with plastic pins, Item No. 32073

■ Material:

- **Grating:** Ductile iron GJS 500-7

■ Set of rules:

EN 1433