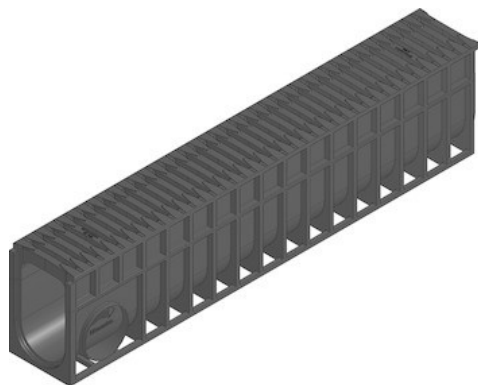
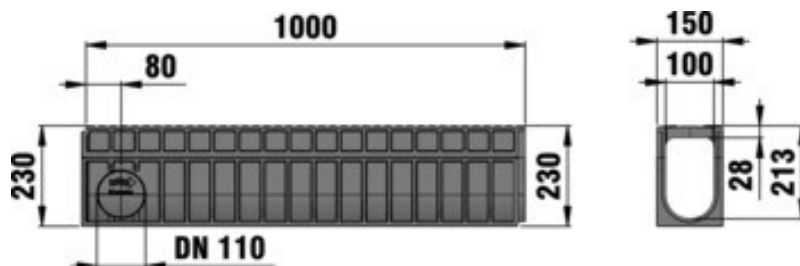


# RECYFIX®MONOTEC 100

RECYFIX®MONOTEC 100, up to class D 400, Type 230



D 400



## ■ Technical data:

Length mm	Width mm	Height mm	Weight kg	Inlet cross-section cm <sup>2</sup> /m	Drainage cross-section cm <sup>2</sup>	Item-no.
1000	150	230	7,588	372	190,5	36000

## ■ Product description:

RECYFIX MONOTEC 100 type 230 – monolithic channel consists of channel body with integrated grating in FIBRETEC-design, made of modified PP, black, according to EN 1433, with side connection possibility DN/OD 110, loading class A 15 – D 400, L/W/H 1000x150x230 mm, Item-No. 36000

## ■ Material:

- **Material:** reinforced Polypropylene

## ■ Set of rules:

EN 1433

## ■ Application areas:

- Pedestrian zones
- Gardening and landscaping
- Sewage plants
- Market squares, markets
- Exhibition grounds, trade fairs
- Public areas and squares
- Car parking facilities
- Cityscapes with architectural value
- Truck-Wash facilities
- Car-Wash facilities
- School yards
- Access drives private

