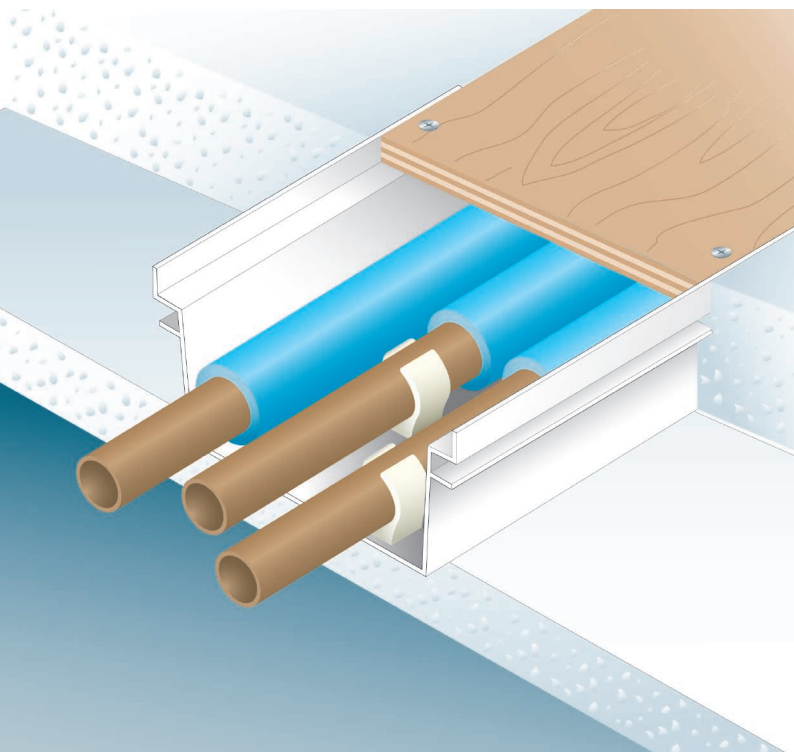




# pipe & cable ducts



# pipe & cable ducting

An easy to access underfloor ducting system which means routine repair and maintenance needs little more than a screwdriver and a spare half hour.

Manthorpe's range of Pipe and Cable Ducting offers a cost effective solution to the traditional methods of shuttering which can be complicated and time consuming to form.

The duct is ideal for internal runs of cables and other services for up totwo pipes in concrete screed floors.

Cover board joints should be staggered so not to coincide with duct joints so there is no risk of the duct distorting.

Future access is simply obtained by first removing the floor covering and then un-screwing the cover board.

- Manthorpe's ducting provides easy access for service pipes and cables to comply with byelaws.
- The components are easy to handle, cut and fix with joints and corners formed by simple mitring.
- The ducting is available in various sizes to accommodate two, three and four pipe runs.
- Detailed technical sheets and fixing guidelines can be obtained from Manthorpe's Technical Department.



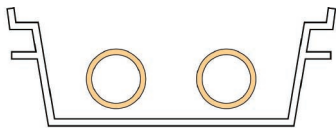
A Weather/Boil Proof Plywood Cover Board  
B uPVC Pipe/Cable Duct

There are 3 sizes of pipe/cable duct available to suit many varying requirements. The most common cases for pipe layout are illustrated below, cable layouts can be highly diverse and be fitted into any of the ducts to suit.



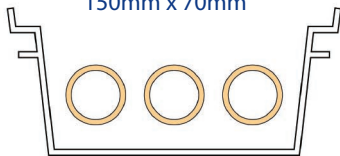
GW510 Pipe & Cable Duct

125mm x 50mm



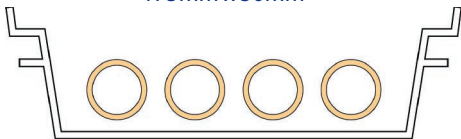
GW530 Pipe & Cable Duct

150mm x 70mm



GW550 Pipe & Cable Duct

175mm x 50mm



System Specification						
Code	Description	Approximate Size			Material	
GW510	Pipe/Cable Duct	125mm	50mm	3.00M	uPVC	Plywood
GW511	Cover Board	123mm	12mm	2.44M		
GW530	Pipe/Cable Duct	150mm	70mm	3.00M	uPVC	Plywood
GW531	Cover Board	146mm	12mm	2.44M		
GW550	Pipe/Cable Duct	175mm	50mm	3.00M	uPVC	Plywood
GW551	Cover Board	171mm	12mm	2.44M		

Manthorpe Building Products Ltd  
Manthorpe House  
Brittain Drive  
Codnor Gate Business Park  
Ripley, Derbyshire DE5 3ND

Tel: 01773 514 200  
Email: [sales@manthorpe.co.uk](mailto:sales@manthorpe.co.uk)  
[www.manthorpe.co.uk](http://www.manthorpe.co.uk)



References:

BYELAW 58 Accessibility of pipes and pipe fittings

BYELAW 99 Penalties

BSEN 313 (Plywood reference only)

## Manthorpe Quality

Manthorpe manufactures a range of ventilation and building products at its headquarters in Derbyshire, under an ISO9001 Quality Assurance Scheme.

All products are designed to comply with the relevant current Building Standards when fitted in accordance with the manufacturer's instructions.

The company maintains a policy of continuous development of its product range and reserves the right to amend the specifications without notice.

