

**MEADRAIN  
PROFESSIONAL  
DRAINAGE  
SYSTEMS  
FOR CHALLENGING  
PROJECTS**



**HIGH QUALITY POLYMER CONCRETE DRAINAGE SYSTEMS**

PROFESSIONAL DRAINAGE SOLUTIONS FOR INDUSTRY AND INFRASTRUCTURE

MEADRAIN SV / EN / ENS



#### **MEADRAIN EN 2000**

Clear width: 200 mm

Total width: 240 mm

Total height: 220/280/330/380 mm

- ✓ Channel section for stepped fall (5%) and without fall
- ✓ Also available with integral outlet connection
- ✓ Loading class A 15 to F 900



#### **MEADRAIN EN 1500**

Clear width: 150 mm

Total width: 190 mm

Total height: 180/220/270/320 mm

- ✓ Channel section for stepped fall (5%) and without fall
- ✓ Also available with integral outlet connection
- ✓ Loading class A 15 to F 900



#### **MEADRAIN EN 1000**

Clear width: 100 mm

Total width: 140 mm

Total height: from 150 to 305 mm

- ✓ Channel section for linear fall (0.5%) and without fall
- ✓ Also available with integral outlet connection
- ✓ Loading class A 15 to F 900



# MEADRAIN SYSTEM OVERVIEW



**MEADRAIN ENS 3000**  
Clear width: 300 mm  
Total width: 394 mm  
Total height: 400 mm

- ✓ Channel section without fall
- ✓ Also available with integral outlet connection
- ✓ Loading class A 15 to F 900



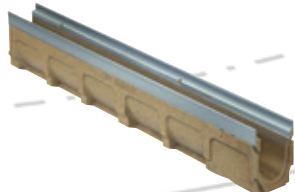
**MEADRAIN ENS 3070**  
Clear width: 300 mm  
Total width: 394 mm  
Total height: 760 mm

- ✓ Channel section without fall
- ✓ Also available with integral outlet connection
- ✓ Loading class A 15 to F 900



**MEADRAIN ENS 4000**  
Clear width: 400 mm  
Total width: 494 mm  
Total height: 465 mm

- ✓ Channel section without fall
- ✓ Also available with integral outlet connection
- ✓ Loading class A 15 to F 900



**MEADRAIN SV 1000**  
Clear width: 100 mm  
Total width: 133 mm  
Total height: from 150 to 305 mm

- ✓ Channel section for linear fall (0.5%), stepped fall with transition section and no fall
- ✓ Also available with integral outlet connection
- ✓ Loading class A 15 to E 600



# MEADRAIN

## PROFESSIONAL DRAINAGE SOLUTIONS FOR INDUSTRY AND INFRASTRUCTURE

MEA Water Management is one of the major players for drainage solutions in the world. We offer an extensive range of products, solutions, technical support and consulting for projects in all application fields.

Our MEADRAIN product portfolio is made of high quality polymer concrete and has been designed to respond all possible expectations for the construction of infrastructures such as airports, roads, terminals, logistic centers, industrial areas and much more.

Our philosophy: Building Success. We commit to help and facilitate the work of our customers at each possible level of the construction chain. Therefore we offer a perfectly adjusted and complete product range in polymer concrete that fits all expectation.

MEADRAIN SV / EN / ENS: our product range for your industrial and infrastructural projects.

### **MEADRAIN SV**

- ✓ Drainage system for multiple usage

### **MEADRAIN EN**

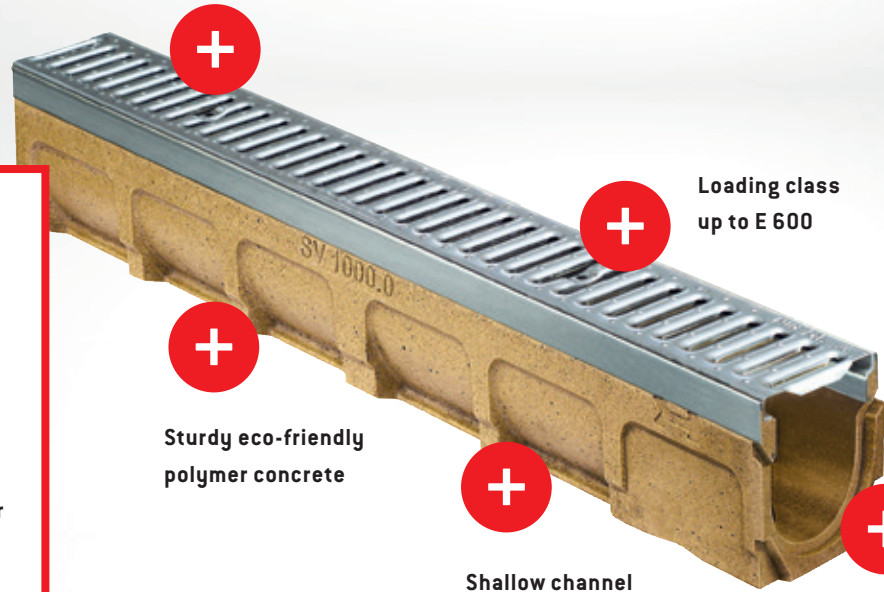
- ✓ Drainage system for heavy load applications

### **MEADRAIN ENS**

- ✓ Drainage system for extreme environments



Edge made of 4 mm galvanised steel



Loading class up to E 600

Sturdy eco-friendly polymer concrete

Shallow channel version available in clear widths 100 and 150 mm

Clear width 100 mm

**System versions**  
**SV 1000**  
 / No fall  
 / Linear fall  
 / Stepped fall  
**SVF 1000**  
**SVF 1500**

**Particularly suitable for loading classes**  
 / C 250  
 / D 400\*  
 / E 600

\* Not suitable for the cross drainage of high speed roads and motorways

**MEADRAIN SV**

The polymer concrete MEADRAIN SV rain water drainage system is one of the most versatile in the MEA Water Management portfolio.

Made for:

- / Pedestrian areas and inner cities
- / Parks
- / Car parks
- / Industrial areas

The MEADRAIN SV channels can bear loading classes up to E 600 thanks to its clever design and 4 mm thick galvanised steel rail edges.

- / ADA gratings that are compatible for wheelchair passage
- / Heelguard gratings for safe passage in cities
- / High quality gratings made of cast iron
- / Mesh and slotted gratings
- / Longitudinal displacement security of the gratings
- / Sturdiness and excellent long lasting performance
- / Exceptional value for money

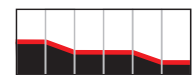
# MEADRAIN SV DRAINAGE SYSTEM FOR MULTI PURPOSE APPLICATIONS



No Fall



Linear fall



Stepped fall

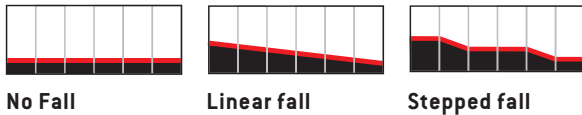
# MEADRAIN EN

## DRAINAGE SYSTEM FOR HEAVY LOAD APPLICATIONS

### MEADRAIN EN

Next to appearance and the type of fall, the expected maximum load is the decisive criterion in the selection of a drainage system.

MEADRAIN channels have been designed to meet every expectation for all applications with extreme wheel loads such as logistic centers, harbours and areas with heavy duty traffic.



- ✓ Loading class E 600 and F 900 (according to DIN 19580 / EN 1433 standards)
- ✓ High quality polymer concrete for maximum resistance and reliability
- ✓ Almost wear and maintenance free
- ✓ Modular and lightweight construction
- ✓ Various fall possibilities
- ✓ Outstanding surface finish guarantees maximum discharge of water and dirt
- ✓ Recyclable material
- ✓ Large choice of grating designs
- ✓ Protects groundwater
- ✓ Chemical resistant

#### System versions

##### EN 1000

- ✓ No fall
- ✓ Linear fall
- ✓ Stepped fall

##### EN 1500

- ✓ No fall
- ✓ Stepped fall

##### EN 2000

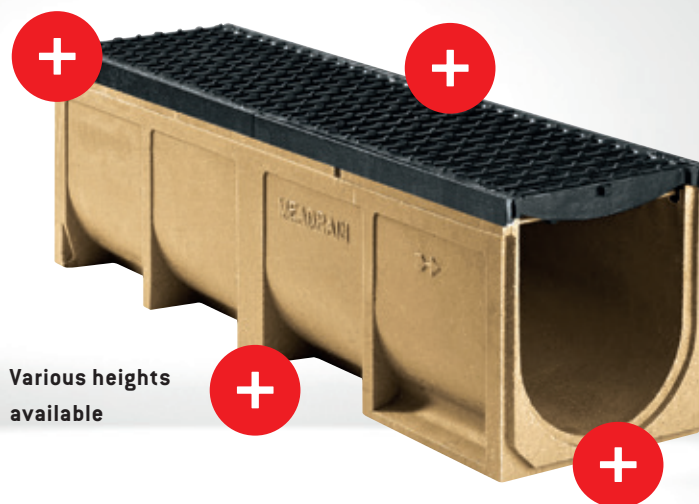
- ✓ No fall
- ✓ Stepped fall

#### Particularly suitable for loading classes

- ✓ C 250
- ✓ D 400\*
- ✓ E 600
- ✓ F 900

L-shaped edge made from cast iron

Loading classes up to F 900



Various heights available

MEADRAIN EN 2000

Clear widths 100, 150, 200 and 300 mm

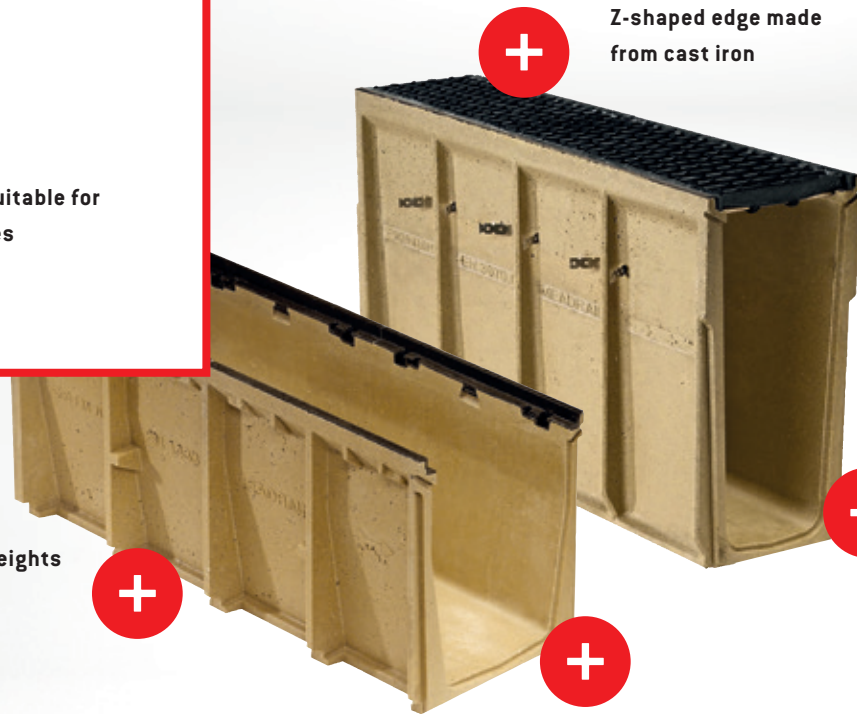
\* Not suitable for the cross drainage of high speed roads and motorways

**System versions**

- ✓ ENS 2000
- ✓ ENS 3000
- ✓ ENS 3070
- ✓ ENS 4000

**Particularly suitable for loading classes**

- ✓ E 600
- ✓ F 900



**+** Z-shaped edge made from cast iron

**+** Loading classes up to F 900

**+** Various heights available

**+** Clear widths 300 and 400 mm

# MEADRAIN ENS DRAINAGE SYSTEM FOR EXTREME ENVIRONMENTS

**MEADRAIN ENS**

The MEADRAIN ENS drainage system has been designed to respond to the evolution of society and increasingly heavier vehicles, may it be aircrafts, trucks, forklifters or even cars.

The MEADRAIN ENS system is made for:

- ✓ Airports
- ✓ Container terminals
- ✓ Port-side areas
- ✓ Logistic centers with intense forklift and truck traffic

The MEADRAIN ENS combines all the advantages of the EN system yet offering exclusive advantages for paramount sturdiness:

- ✓ Z profile edge rails made of cast iron for maximum stability and solidity
- ✓ Heavy duty gratings for highest loading classes



**No Fall**



## MEADRAIN PROFIX CHANNEL COVERS EASY, FAST AND SAFE

### PROFIX RAPID GRATING LOCKING MECHANISM FOR MEADRAIN EN AND ENS CHANNELS

For all professionals who look for an easy, fast and convenient installation: MEADRAIN PROFIX locking mechanism.

Installation:

- ✓ Place the grating into the channel body
- ✓ Press in - it's done

Removal:

- ✓ Simply use a screwdriver
- ✓ Lever the grating - it's done

This professional fixing method is available for all non bolted heavy duty drainage channels

### Advantages

- ✓ Fast, cost-effective installation
- ✓ Optimised water uptake
- ✓ Long lasting
- ✓ No rattling with vehicular traffic
- ✓ TÜV-tested
- ✓ No moving parts
- ✓ Long term functionality  
(even under extreme conditions)
- ✓ Longitudinal displacement security  
of the grating



## MEADRAIN CLIPFIX CHANNEL COVERS SV CHANNEL RAPID LOCKING SYSTEM

### CLIPFIX RAPID GRATING LOCKING MECHANISM FOR MEADRAIN Z/S/SV CHANNELS

For all professionals who look for an easy, fast and convenient installation: MEADRAIN CLIPFIX locking mechanism.

Installation:

- ✓ Place the grating into the channel body
- ✓ Step on it - it's done

Removal:

- ✓ Take the MEA Grating hook
- ✓ Remove the first grating from the channel line
- ✓ All the other grating can be removed by hand

### Advantages

- ✓ Fast, cost-effective installation
- ✓ Optimised water uptake
- ✓ Long lasting
- ✓ No rattling with vehicular traffic
- ✓ Practical MEA grating hook for fast demounting of the gratings
- ✓ Easy to clean channel: ongoing completely unobstructed cross section
- ✓ Sturdy



# POLYMER CONCRETE

## THE QUALITY MATERIAL

### The material at a glance

- ✓ Impermeable, virtually pore-free
- ✓ Highly resistant to chemicals, oils and other chemically aggressive substances
- ✓ Predominantly made of natural, mineral raw materials, like quartz, basalt and granite
- ✓ Significantly lighter than comparable concrete channels

### MEA POLYMER CONCRETE

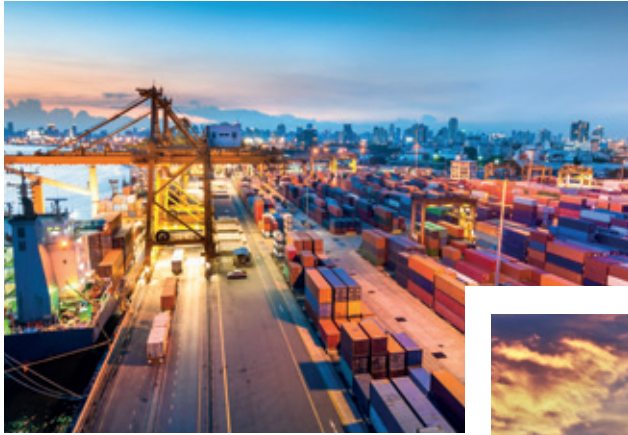
The special polymer concrete from MEA is remarkable for its outstanding physical and chemical properties. These make it an extremely reliable and versatile material in even the toughest conditions.

The material – natural mineral products like quartz, basalt and granite, bonded together with a resinous mixture – stands out because to its extremely high flexural tensile strength and compressive. Another particular advantage of drainage channels in polymer concrete is that they are significantly lighter than conventional concrete channels, making them considerably easier to install.

MEA polymer concrete channels are particularly eco-friendly. Mostly made out of minerals, polymer concrete channels are easy to recycle. Because of the quality material channels have a particularly long lifetime, saving future investments and unnecessary new building sites. Polymer concrete channels are the more extremely resistant to liquid chemicals and acids, making them the perfect protection devices for the environment and ground waters.

### MATERIAL CHARACTERISTICS

Compressive strength	> 90 N/mm <sup>2</sup>
Flexural tensile strength	> 22 N/mm <sup>2</sup>
Water adsorption	Below 0.05%
Modulus of elasticity	25-35 kN/mm <sup>2</sup>
Density	2.1 - 2.3 kg/dm <sup>3</sup>
Water ingression depth	0 mm <sup>2</sup>
Material structure	Capillary-free – ideal for the rapid discharge of water and dirt particles
Channel body weight	Significantly lighter than conventional concrete channels
Workability	Suitable for grinding disks, rock drills and chisels
Environmental compatibility	Eco-friendly building material with mineral admixtures
Ageing resistance	Entirely frost proof, wear-resilient, and maintenance-free. Highly resistant to liquid chemicals (pH range 3 to 9)



HARBOURS AND CONTAINER TERMINALS



INDUSTRY AND TRADES



INFRASTRUCTURE AND TRAFFIC

# MEADRAIN APPLICATION AREAS



URBAN AREAS



GARDENING AND LANDSCAPING



ENVIRONMENT AND AGRICULTURE

# DISCOVER THE RANGE OF MEA DRAINAGE SOLUTIONS



**MEADRAIN PG**  
Drainage system for  
Multi-storey car parcs



**MEATEC**  
Professional drainage  
system for façades and  
terrasses



**MEARIN**  
Professional lightweight  
drainage system made  
of GRP



**MEADRAIN TRAFFIC**  
Professional drainage  
systems for road and  
higway construction



**BUILDING SUCCESS**

MEA Water Management GmbH / Sudetenstraße 1 / D-86551 Aichach  
[www.mea-group.de](http://www.mea-group.de)