



**PARAGON
STAINLESS**

PRODUCTS

PRODUCT CATALOGUE

Drainage Channels and Gratings



2017.DCG

TEL: +44 (0)1206 574374

EMAIL: sales@paragon-stainless.co.uk

WEB: www.paragon-stainless.co.uk

FAX: +44 (0)1206 573 246

CONTENTS

Section

Introduction

About us	02
Product Information	05
Ordering Information	06

Drainage

1. Tiled finish - channels	07
2. Vinyl finish - channels	15
3. Heavy duty - channels	18
4. Patios and balconies	20
5. Tiled finish - grates	23

Client notes page	27
-------------------	----

COMPANY INFO

Paragon Stainless Products Ltd is a privately owned company based in Colchester, Essex and specialises in the design and manufacture of its own extensive range of high quality stainless steel surface water drainage systems.

Our systems can be used in many applications including internal and external building drainage, hard and soft landscaping, sports and leisure facilities, hotels, retail areas and distribution centres. We offer a standard range of gullies, channels, gratings and associated products, and, along with specialising in bespoke solutions including curved and shaped drainage channels and gratings, we are able to meet your exact requirements.

At Paragon Stainless Products Ltd, we pride ourselves on our honest open approach in dealing with our customers, and our experienced technical engineers are always available to discuss any aspect of our product range.

CLIENTS

Paragon Stainless boast a wide range of clients across a multitude of industry sectors. We have collected a small list of them below.

- McDonald's Restaurants
- Abu Dhabi Golf Club
- Westfield Shopping Centre
- Haven Holiday Parks
- Cannock Chase Leisure Centre
- London Hippodrome
- Cutty Sark Gardens
- Royal Bournemouth Hospital
- Dairy Crest
- London Borough of Barking
- London Borough of Havering
- Museum of London
- HMP Everthorpe
- The Savoy Hotel
- Wilkins & Son Ltd
- David Lloyd Leisure Ltd
- Canons Leisure
- Homes Place
- English Heritage
- Stonehenge
- McDonalds
- McLaren Construction
- Morgan Sindall

McAlpine
 PAM St Gobain
 Gatwick and Heathrow Airports
 UK police
 HMP Prison Service
 HM Border Force
 Queen Mother Sports Centre
 Taco Bell
 Graham Plumbers Merchant
 Datum Flooring
 NaturesWay Foods Ltd
 Amiri Construction
 Drainage Superstore
 Grafton Merchanting GB Ltd
 Jewson Ltd
 Pellikaan Construction Ltd
 Plumbase
 Royal College of Surgeons
 Soho House UK
 Travis Perkins
 Wilmott Dixon Construction Ltd
 Wolseley UK Ltd

SPECIAL AND NON-STANDARD PRODUCTS

This catalogue shows our standard product range excluding the vast array of bespoke products we can also manufacture. If you cannot see what you are looking for in the catalogue, please contact us, we can help.

Grate loading details

Gratings in this catalogue have been categorised in the following manner.

- A.15** Areas for pedestrian foot traffic and pedestrian propelled wheelchairs, disabled persons electrically propelled vehicles etc. Subject to max loading of 15kN.
- B.125** For installation into pathways not nearer than 0.2m to the curb of a highway. Subject to max loading of 125kN.
- C.250** For installation into pathways within 0.2m of a highway curb and in a highway within 0.5m from the curb. For slow moving heavy vehicles, car parks, service stations etc. Subject to a max loading of 250kN.

Specifying and ordering details

1. Type

Select the type of product required

eg. **TYPE SG**

2. Size

Select the size and type of outlet required

eg. **-I50**

3. Extras

Select any optional extras

e.g. **-AB**

4. Special

Specify any special features or options

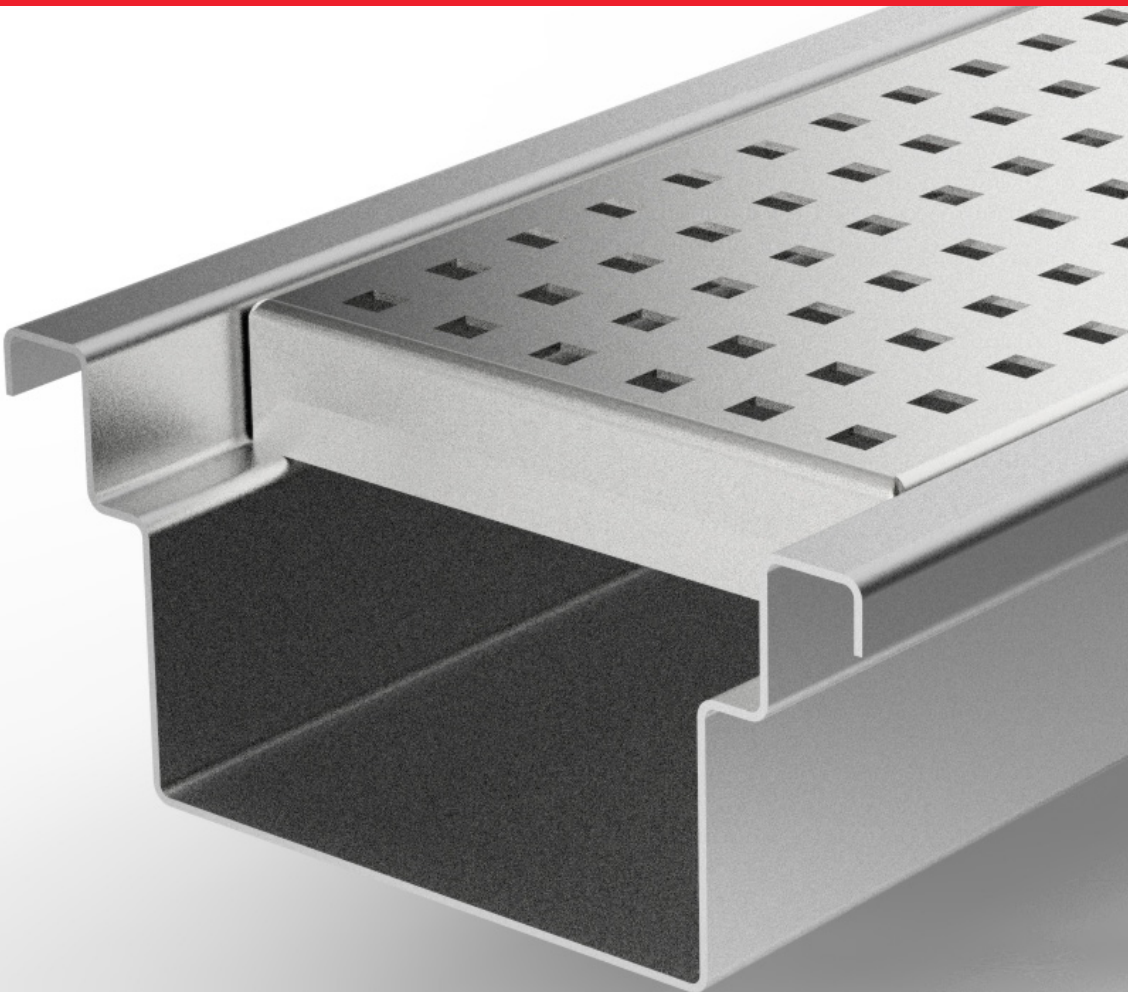
eg. **(I50mm diameter spigot)**

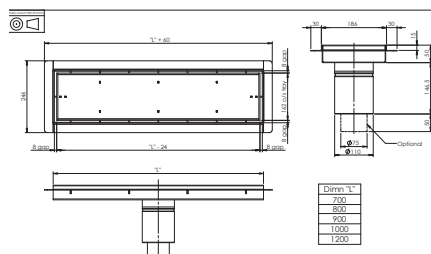
Complete identity would be written:

TYPE SG-I50-AB-(I50mm dia spigot)



I.TILED FINISH



**ST-162**

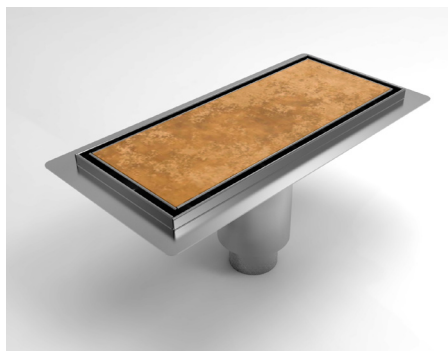
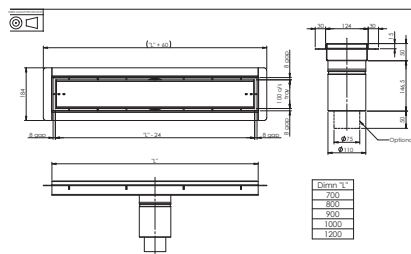
All stainless steel trapped shower gully. Ideal for terrazzo or tiled floors. Two standard widths available. Horizontal or vertical outlet with 110 dia spigot. Removable trap (upto 1.7L/sec) and optional sediment basket.

ORDER INFORMATION

Type ST-162 gully. Please contact us to specify details such as overall length, width, outlet type and location.

TEL: +44 (0)1206 574374

EMAIL: info@paragon-stainless.co.uk

**ST-100**

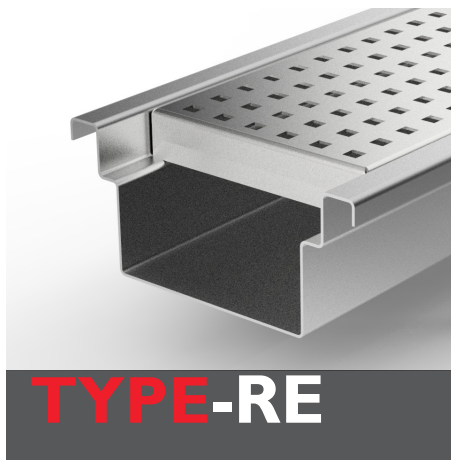
All stainless steel trapped shower gully. Ideal for terrazzo or tiled floors. Two standard widths available. Horizontal or vertical outlet with 110 dia spigot. Removable trap (upto 1.7L/sec) and optional sediment basket.

ORDER INFORMATION

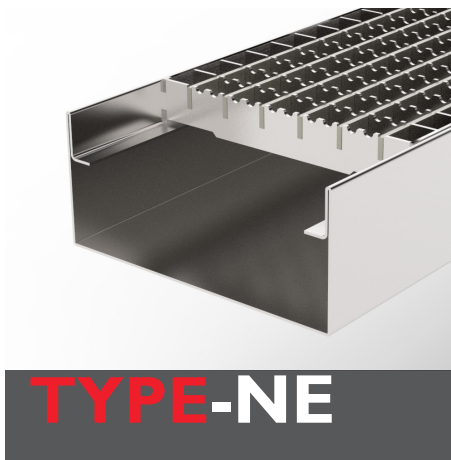
Type ST-100 gully. Please contact us to specify details such as overall length, width, outlet type and location.

WEB: www.paragon-stainless.co.uk

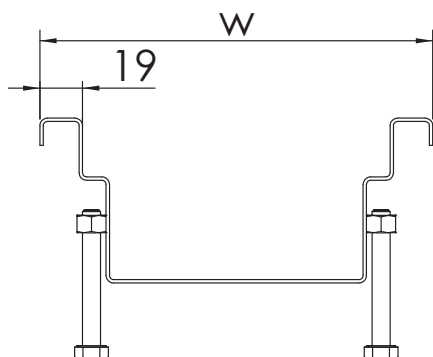
FAX: +44 (0)1206 573 246



TYPE-RE



TYPE-NE

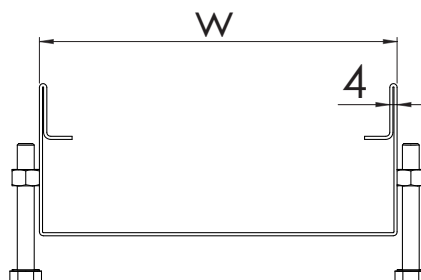


All stainless steel return-edge drainage channel. **Profiled to suit tiled or terrazzo floors finishes.**

Overall standard width is 175mm. Other options include 150, 160, 200, 230 and 300 wide. Optional levelling/grouting feet.

Miniumum overall depth is 50mm.

Profile to fit 25mm deep grate.



All stainless steel drainage narrow-edge channel. **Profiled to suit tiled or terrazzo floors finishes.**

Overall standard width is 146mm. Other options include 100 and 170 wide. Optional levelling/grouting feet.

Miniumum overall depth is 50mm.

Profile to fit 25mm deep grate.

ORDER INFORMATION

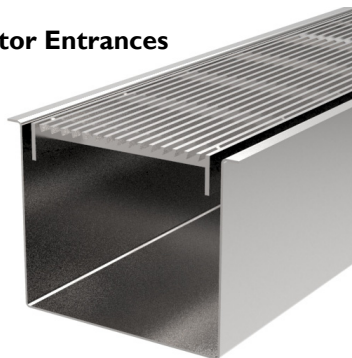
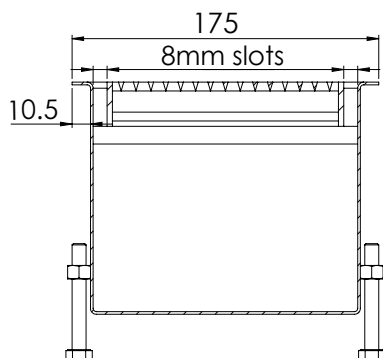
Type RE channel. Please contact us to specify details such as overall length, width, outlet type and location.

ORDER INFORMATION

Type NE channel. Please contact us to specify details such as overall length, width, outlet type and location.

TEL: +44 (0)1206 574374
EMAIL: info@paragon-stainless.co.uk

WEB: www.paragon-stainless.co.uk
FAX: +44 (0)1206 573 246

Elevator Entrances**TYPE-LEDC**

All stainless steel drainage profiled to suit tiled or terazzo floors finishes. **Ideal for lift entrances.**

Overall standard width is 175mm.

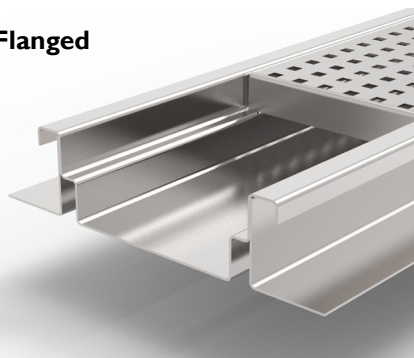
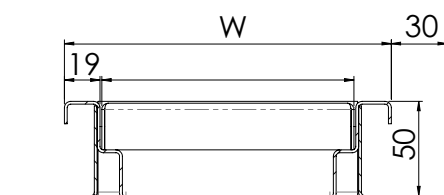
Minimum overall depth is 50mm

8mm drainage slot all round.

Profile to fit 25mm deep grate.

ORDER INFORMATION

Type LEDC channel. Please contact us to specify details such as overall length, width, outlet type and location.

Flanged**TYPE-REF**

All stainless steel return-edge drainage channel. **Profiled to suit tiled or terazzo floors finishes.**

Overall standard width is 175mm. Other options include 150, 160, 200, 230 and 300 wide.

Minimum overall depth is 50mm.

Profile to fit 25mm deep grate.

ORDER INFORMATION

Type REF channel. Please contact us to specify details such as overall length, width, outlet type and location.

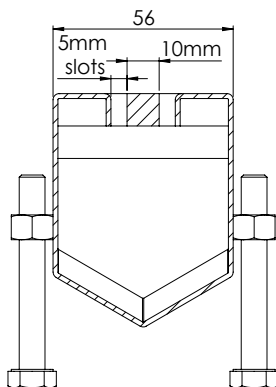
TEL: +44 (0)1206 574374
EMAIL: sales@paragon-stainless.co.uk

WEB: www.paragon-stainless.co.uk
FAX: +44 (0)1206 573 246

Doorway



TYPE-RPT



All stainless steel slotted drainage channel with single 10mm toebar.
Can be used in doorway thresholds.

Overall standard width is 56mm.

Minimum overall depth is 50mm. Optional levelling/grouting feet.

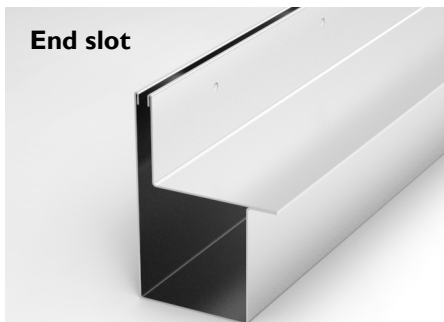
Removeable toebar.

5mm drainage slots.

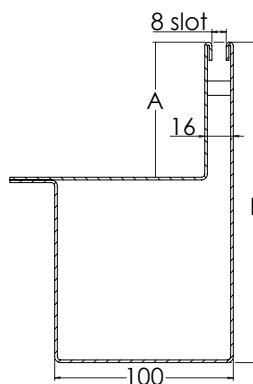
ORDER INFORMATION

Type RPT channel. Please contact us to specify details such as overall length, width, outlet type and location.

End slot



TYPE-ES



All stainless steel slotted drainage channel with single 10mm toebar.
Can be used against a sidewall.

Overall standard width is 56mm.

Minimum overall depth is 50mm.

Secured toebar.

5mm drainage slots.

ORDER INFORMATION

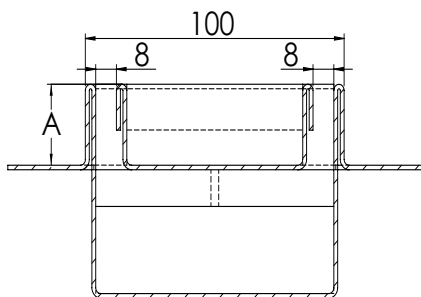
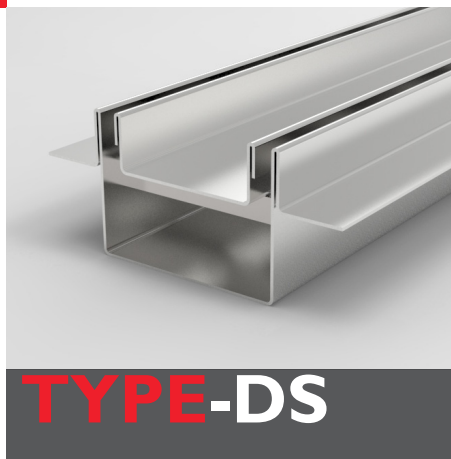
Type ES channel. Please contact us to specify details such as overall length, width, outlet type and location.

TEL: +44 (0)1206 574374

EMAIL: info@paragon-stainless.co.uk

WEB: www.paragon-stainless.co.uk

FAX: +44 (0)1206 573 246



All stainless steel drainage channel with stone carrier frame. **Ideal for poolside surrounds.**

Removeable centralised stone carrier frame.

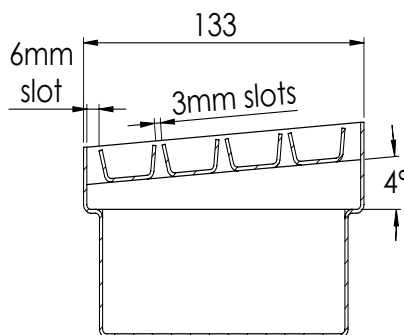
Flange all round. (Depth to be specified)

8mm drainage slot all round.

Minimum overall depth is 50mm.

ORDER INFORMATION

Type DS channel. Please contact us to specify details such as overall length, width, outlet type and location.



All stainless steel drainage channel with stone carrier frame. **Ideal for poolside surrounds.**

Removeable centralised stone carrier frame.

3mm drainage slots.

6mm drainage slot all round.

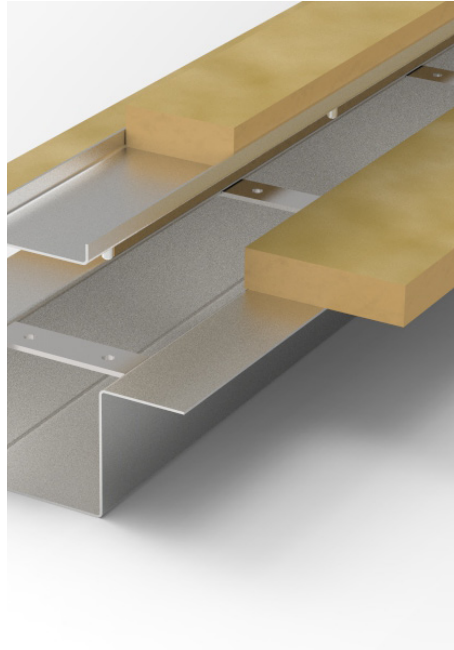
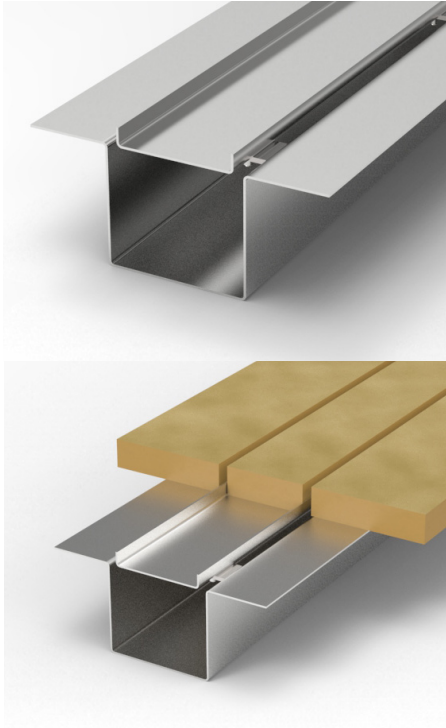
Flat or angled.

ORDER INFORMATION

Type SCM channel. Please contact us to specify details such as overall length, width, outlet type and location.

TEL: +44 (0)1206 574374
EMAIL: sales@paragon-stainless.co.uk

WEB: www.paragon-stainless.co.uk
FAX: +44 (0)1206 573 246



TYPE-SCS

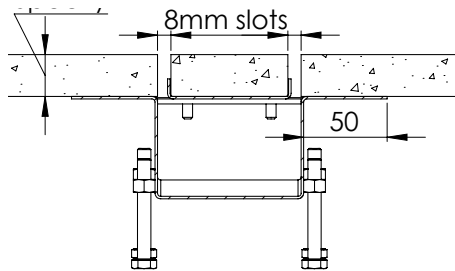
All stainless steel drainage channel with stone carrier frame. **Ideal for poolside surrounds.**

Removeable stone carrier frame.

8mm drainage slot all round.

Optional levelling/grouting feet.

Flat or angled.

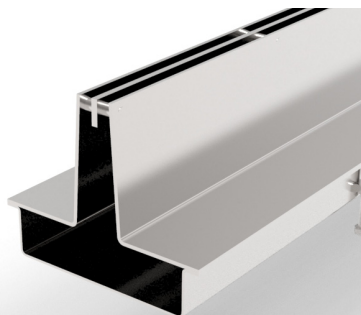
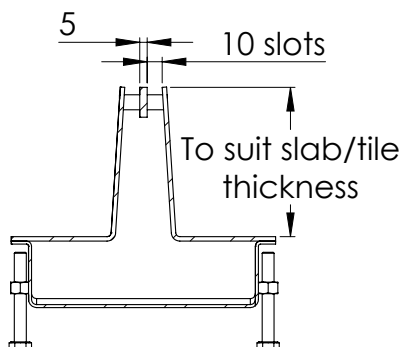


ORDER INFORMATION

Type SCS channel. Please contact us to specify details such as overall length, width, outlet type and location.

TEL: +44 (0)1206 574374
EMAIL: sales@paragon-stainless.co.uk

WEB: www.paragon-stainless.co.uk
FAX: +44 (0)1206 573 246

**TYPE-CSC**

All stainless steel drainage slot channel.
Profiled to suit tiled or terrazzo floors finishes.

2 x 10mm drainage slots

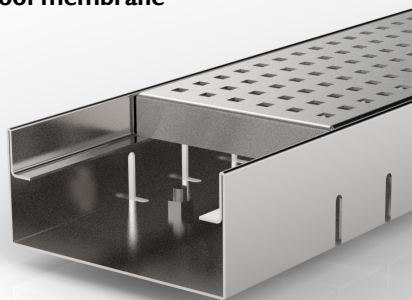
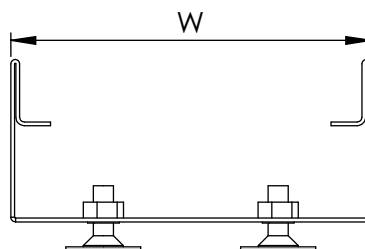
Compact design

Upstands adjusted to suit slab thickness

Optional levelling/grouting feet.

ORDER INFORMATION

Type CSC channel. Please contact us to specify details such as overall length, width, outlet type and location.

Roof membrane**TYPE-NESD**

All stainless steel drainage narrow- edge slot channel with secondary drainage slots. **Ideal for roof areas.**

Overall standard width is 145mm. Other options available on request.

Secondary drainage in channel body. 6mm wide slots.

Optional levelling/grouting feet.

ORDER INFORMATION

Type NESD channel. Please contact us to specify details such as overall length, width, outlet type and location.

TEL: +44 (0)1206 574374

EMAIL: sales@paragon-stainless.co.uk

WEB: www.paragon-stainless.co.uk

FAX: +44 (0)1206 573 246

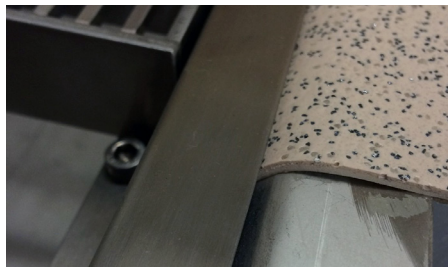


2. VINYL FINISH

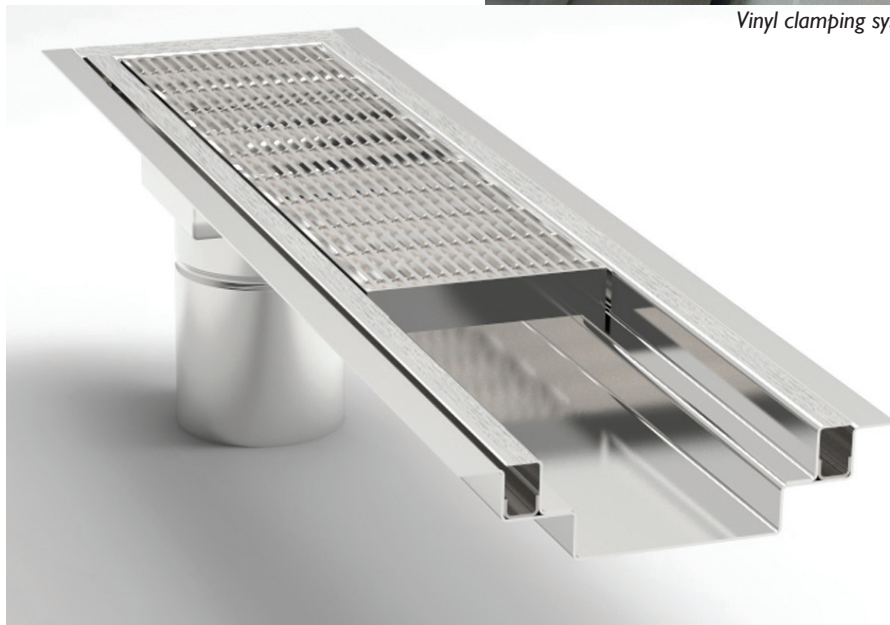


TYPE-VFC

All stainless steel clamping channel for vinyl floors. **Ideal for kitchens or showers.**



Vinyl clamping system

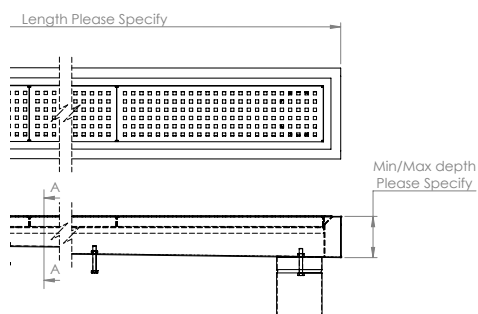


Overall standard width is 220mm. Other options include 130 and 160 wide.

Minimum overall depth is 50mm.

Profile to fit a 25mm deep grate.

Adjustable levelling feet (optional).

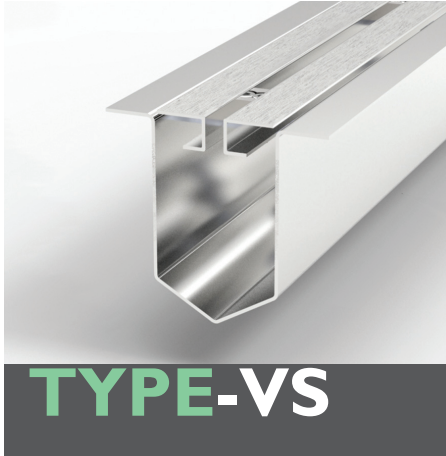


ORDER INFORMATION

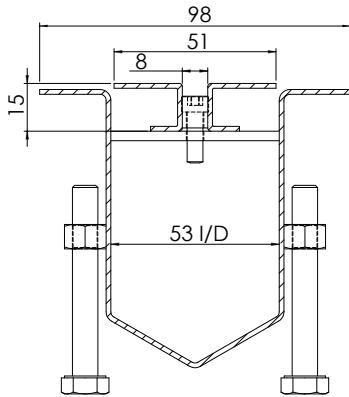
TypeVFC channel. Please contact us to specify details such as overall length, width, outlet type and location.

TEL: +44 (0)1206 574374
EMAIL: sales@paragon-stainless.co.uk

WEB: www.paragon-stainless.co.uk
FAX: +44 (0)1206 573 246



TYPE-VS



All stainless steel slotted drainage channel with vinyl clamp. **Ideal for kitchens or showers.**

Minimum overall depth is 50mm.

Secured vinyl clamp.

8mm drainage slot.

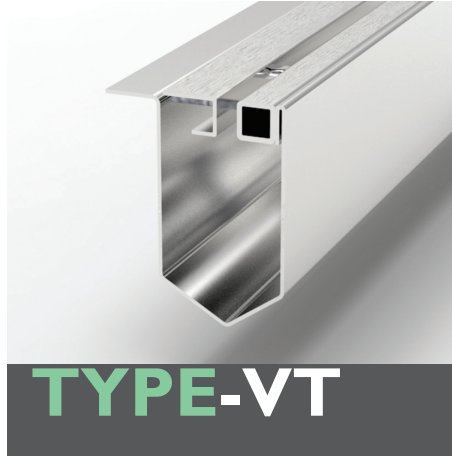
Adjustable levelling feet.

ORDER INFORMATION

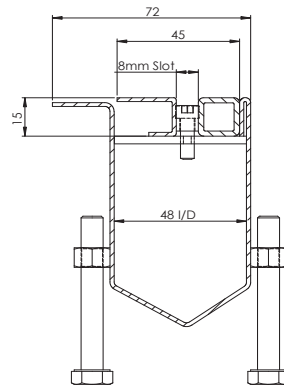
Type VS channel. Please contact us to specify details such as overall length, width, outlet type and location.

TEL: +44 (0)1206 574374

EMAIL: sales@paragon-stainless.co.uk



TYPE-VT



All stainless steel slotted drainage channel with vinyl clamp on one side and narrow edge on the other. **Ideal for kitchens or showers.**

Minimum overall depth is 50mm.

Secured vinyl clamp.

8mm drainage slot.

Adjustable levelling feet.

ORDER INFORMATION

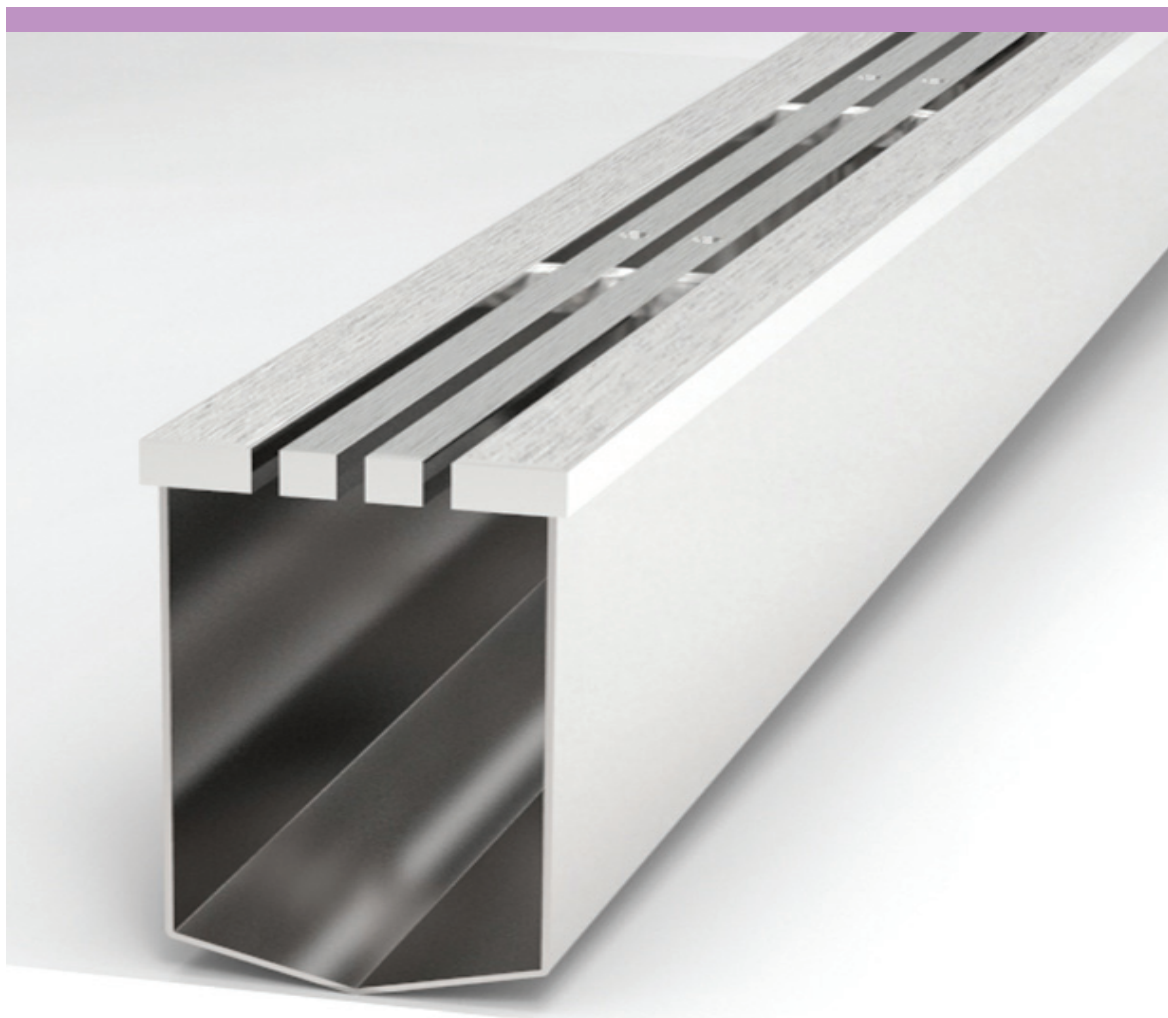
Type VT channel. Please contact us to specify details such as overall length, width, outlet type and location.

WEB: www.paragon-stainless.co.uk

FAX: +44 (0)1206 573 246

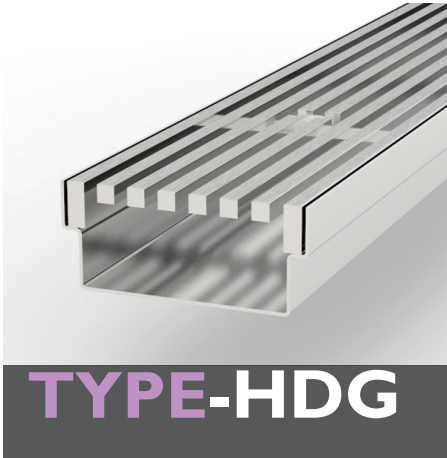


3. HEAVY DUTY

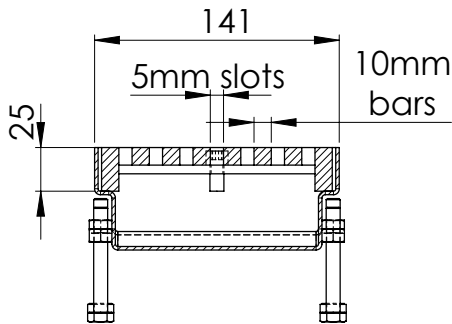


TEL: 01206 537487
 EMAIL: sales@paragonstainless.co.uk

WEB: www.paragonstainless.co.uk
 FAX: 01206 537466



TYPE-HDG



All stainless steel heavy duty slotted drainage channel.

Overall standard width is 141mm.

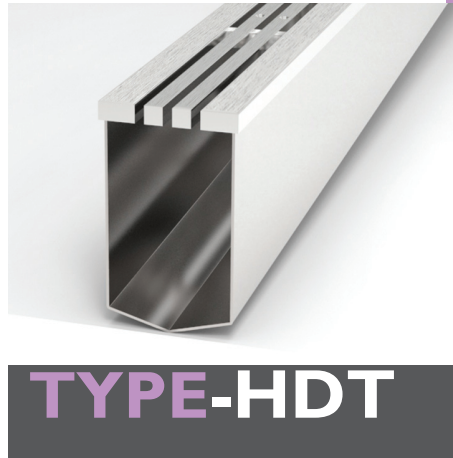
Minimum overall depth is 50mm

Secured heavy duty bar grate.

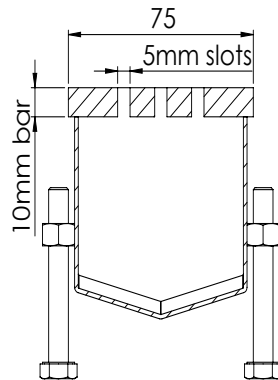
5mm drainage slots

ORDER INFORMATION

Type HDG channel. Please contact us to specify details such as overall length, width, outlet type and location.



TYPE-HDT



All stainless steel heavy duty slotted drainage channel with two 10mm toe bar.

Overall standard width is 75mm.

Minimum overall depth is 50mm.

Removeable toe bar.

5mm drainage slots.

ORDER INFORMATION

Type HDT channel. Please contact us to specify details such as overall length, width, outlet type and location.

TEL: +44 (0)1206 574374
EMAIL: sales@paragon-stainless.co.uk

WEB: www.paragon-stainless.co.uk
FAX: +44 (0)1206 573 246



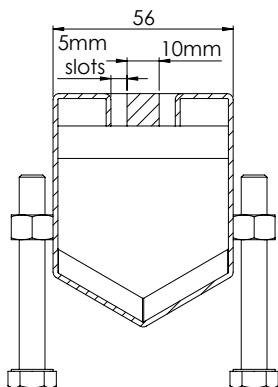
4. PATIOS AND BALCONIES



Doorway



TYPE-RPT



All stainless steel slotted drainage channel with single 10mm toebar.
Can be used in doorway thresholds.

Overall standard width is 56mm.

Minimum overall depth is 50mm. Optional levelling/grouting feet.

Removeable toebar.

5mm drainage slots.

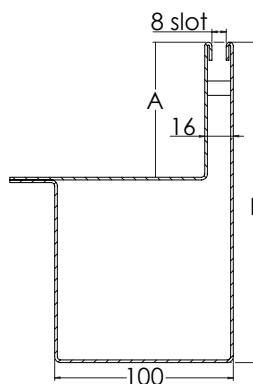
ORDER INFORMATION

Type RPT channel. Please contact us to specify details such as overall length, width, outlet type and location.

End slot



TYPE-ES



All stainless steel slotted drainage channel with single 10mm toebar.
Can be used against a sidewall.

Overall standard width is 56mm.

Minimum overall depth is 50mm.

Secured toebar.

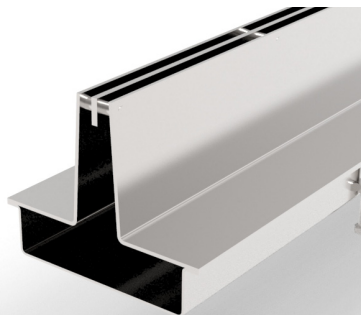
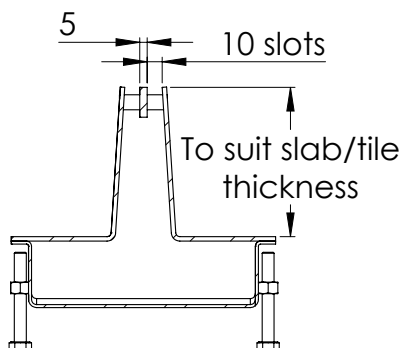
5mm drainage slots.

ORDER INFORMATION

Type ES channel. Please contact us to specify details such as overall length, width, outlet type and location.

TEL: +44 (0)1206 574374
EMAIL: sales@paragon-stainless.co.uk

WEB: www.paragon-stainless.co.uk
FAX: +44 (0)1206 573 246

**TYPE-CSC**

All stainless steel drainage slot channel.
Profiled to suit tiled or terrazzo floor finishes.

2 x 10mm drainage slots

Compact design

Upstands adjusted to suit slab thickness

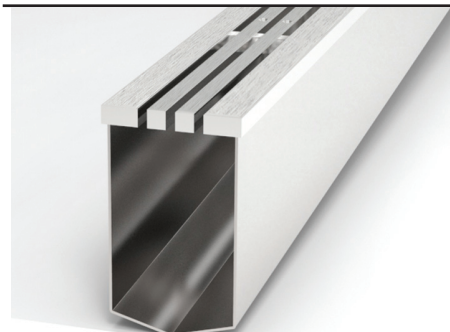
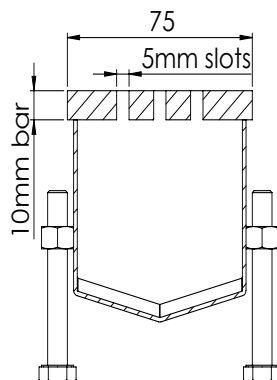
Optional levelling/grouting feet.

ORDER INFORMATION

Type CSC channel. Please contact us to specify details such as overall length, width, outlet type and location.

TEL: +44 (0)1206 574374

EMAIL: sales@paragon-stainless.co.uk

**TYPE-HDT**

All stainless steel heavy duty slotted drainage channel with two 10mm toebar.

Overall standard width is 75mm.

Minimum overall depth is 50mm.

Removeable toe bar.

5mm drainage slots.

ORDER INFORMATION

Type HDT channel. Please contact us to specify details such as overall length, width, outlet type and location.

WEB: www.paragon-stainless.co.uk

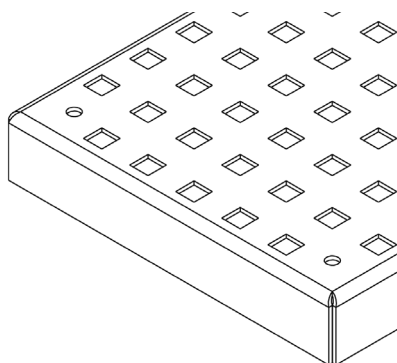
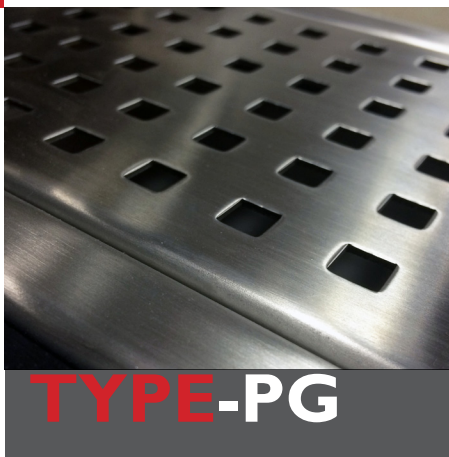
FAX: +44 (0)1206 573 246



**PARAGON
STAINLESS**
PRODUCTS

5. GRATES





Light duty pressed grate with 8mm square holes for bare foot areas.

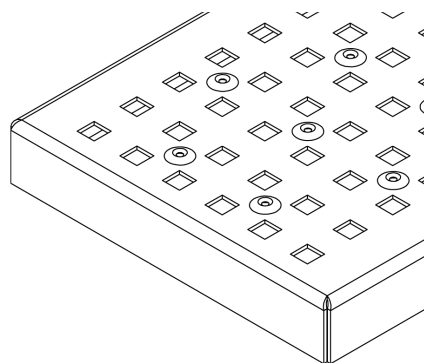
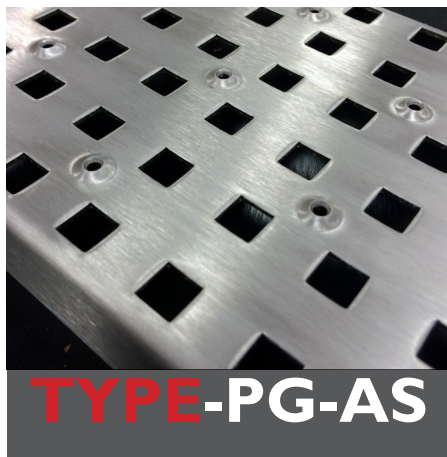
For use on 175, 250 and 300 wide channels.

Satin grain finish as standard.

A.15

ORDER INFORMATION

Type PG grate. Please specify either type 304 or 316 stainless steel.



Light duty pressed grate with 8mm square holes with slip-resisting pattern.

For use on 175, 250 and 300 wide channels.

Satin grain finish as standard.

A.15

ORDER INFORMATION

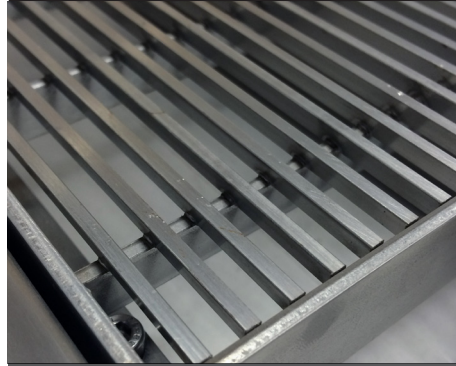
Type PG-AS grate. Please specify either type 304 or 316 stainless steel.

TEL: +44 (0)1206 574374
EMAIL: sales@paragon-stainless.co.uk

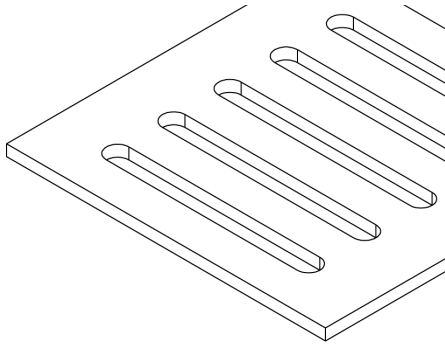
WEB: www.paragon-stainless.co.uk
FAX: +44 (0)1206 573 246



TYPE-PS



TYPE-FL



Medium duty pressed grate with 6mm wide slots and reinforcing cross ties. for light vehicle applications.

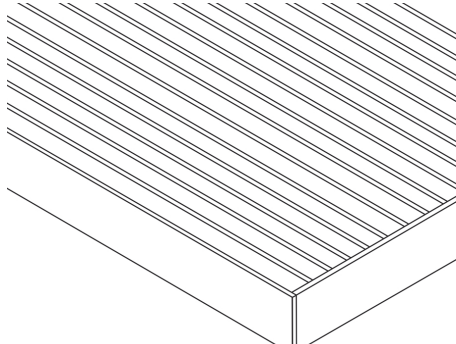
For use on 175, 250 and 300 wide channels.

Satin grain finish as standard.

A.15

ORDER INFORMATION

Type PS grate. Please specify either type 304 or 316 stainless steel.



Stylish flow-line grate for wet foot areas with 5mm slot width.

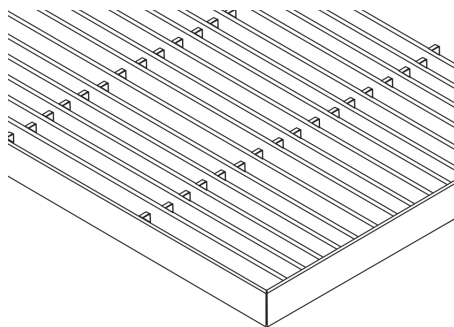
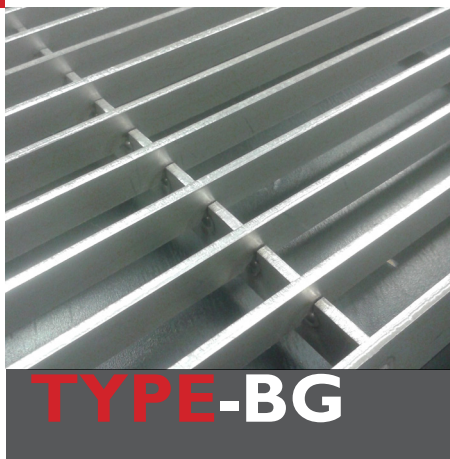
For use on 175, 250 and 300 wide channels.

Can be supplied with discrete securing.

A.15

ORDER INFORMATION

Type FL grate. Please specify either type 304 or 316 stainless steel and grate type.



High flow bar grate, ideal for areas carrying pedestrian propelled trolleys.

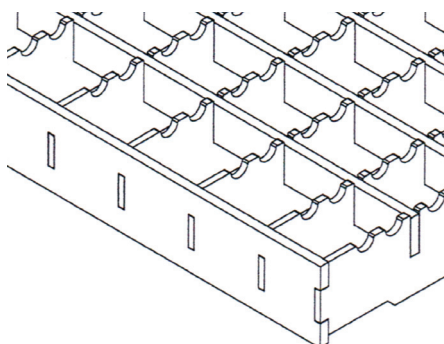
Various sizes available to suit loading applications.

Heavy duty option.

A.15

ORDER INFORMATION

Type BG bar grate. Please specify either type 304 or 316 stainless steel.



High flow anti-slip bar grate, ideal for areas where more slip resistance is required.

Various sizes available to suit loading applications.

Heavy duty option.

B.125

ORDER INFORMATION

Type BG-AS anti-slip bar grate. Please specify either type 304 or 316 stainless steel.

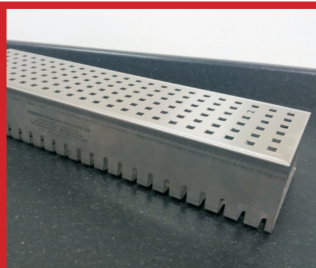
TEL: +44 (0)1206 574374
EMAIL: sales@paragon-stainless.co.uk

WEB: www.paragon-stainless.co.uk
FAX: +44 (0)1206 573 246

Manufacturers of Stainless Steel Products



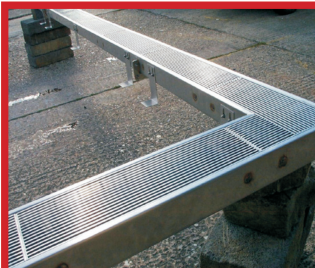
PARAGON
STAINLESS
PRODUCTS



Channels



Drains & Gullies



Linear Drainage



Architecture



Bespoke



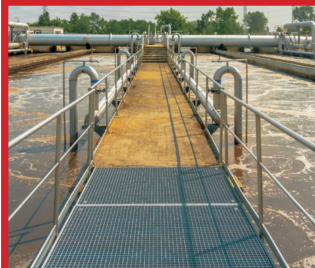
Step-overs



Seating



Hand Rails



Walkways

TEL: +44 (0)1206 574374

EMAIL: sales@paragon-stainless.co.uk

WEB: www.paragon-stainless.co.uk

FAX: +44 (0)1206 573 246