



PEDESTALS & SUPPORT PADS FOR PAVING AND DECKING

2018

SPRING 2018

Wallbarn offers the most comprehensive range of pedestals and support pads for suspended paving and decking systems on structural decks.

HELP CREATE THE PERFECT SOLUTION FOR ROOFTOP LIVING



They improve the performance of the building by allowing proper drainage beneath the upper surface, ventilating the structure and preventing localised flooding.

Wallbarn pedestals and support pads are used for constructing hard landscaping areas on terraces, balconies, ballasted flat roofs and podium decks.

They improve drainage by lifting the slab or decking off the waterproofed surface. No mechanical fixings are required and the membrane is not compromised.

The open joint design means surface ponding does not occur, reducing slip hazards.

They are the fast, easy way to build the highest quality pedestrian surfaces, improving the appearance and performance of structural surfaces and optimising the building footprint.



FOR THE HIGHEST QUALITY LANDSCAPING FINISHES WALLBARN OFFERS THE MOST TAILORED SOLUTIONS FOR DESIGNERS, CONTRACTORS AND END CLIENTS.



CONTENTS

PAGE

PAVING:

5mm PVC PADS (with separate cross spacers)	2
6mm PVC PADS FOR PAVING	
7mm PVC PADS FOR PAVING	
9mm RUBBER PAVING SUPPORT PADS	5
14mm & 17mm FIXED HEIGHT PLASTIC SUPPORT PADS	7
WEDGE SHAPED RUBBER SHIMS/SLOPE CORRECTORS FOR FIXED HEIGHT PADS	9
ACCESSORIES FOR FIXED HEIGHT PADS – PLASTIC SHIMS	10
ACCESSORIES FOR FIXED HEIGHT PADS – RUBBER ACOUSTIC SHIMS	11
MINI-MEGAPADS FOR PAVING	12
ASP ADJUSTABLE PAVING PEDESTALS	15
FLAT HEADED ADJUSTABLE SUPPORTS.....	21
ASP EXTRA – EXTENDED HEIGHT PAVING PEDESTALS	22
MINI BASES FOR ASPs	23
HEAD PIECES FOR ASPs	25
SLOPE CORRECTORS for ASPs & MEGAPADS	26
MEGAPADS FOR PAVING	27

TIMBER DECKING:

5mm PVC DISCS	34
6mm PVC PADS FOR DECKING	35
TD PLUS FOR 6mm RUBBER PAD.....	35
7mm PVC PADS FOR DECKING	37
TD PLUS FOR 7mm PVC PAD	37
TD MINI MEGAPADS (for timber decking).....	38
TD SUPPORT PADS FOR DECKING.....	41
TD EXTRA - EXTENDED HEIGHT PADS FOR DECKING	46
90mm WIDE TD HEADPIECES FOR DECKING	47
TD PLUS SUPPORT PADS FOR DECKING	48
TD MOBILE PADS FOR DECKING	49
TD MEGAPADS	50
FLAT HEADED MEGAPADS	53
TD PLUS MEGAPADS	55
SHOCK ABSORBING SHIMS	56
FLAT HEADED ADJUSTABLE SUPPORTS.....	57
SLOPE CORRECTORS for TD, TD PLUS, TD MOBILE & FLAT HEADED SUPPORT PADS.....	59



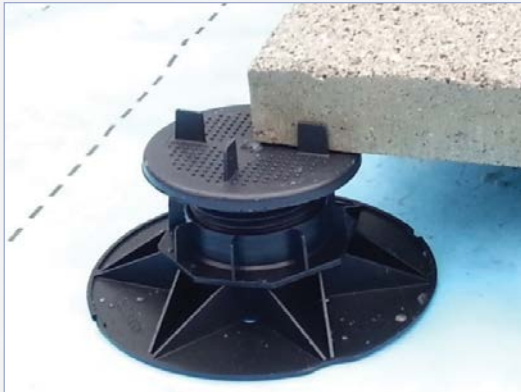
www.facebook.com/wallbarn

www.twitter.com/wallbarn

PEDESTALS & SUPPORT PADS FOR PAVING

Wallbarn offers the largest range of pedestals in the UK. Our products include simple fixed height support pads and extra high adjustable pedestals with specialised designs and variations to accommodate the different types of roof and podium deck.

The major advantages of using support pedestals are to improve drainage, ease and speed of installation and protection of the surface beneath. They also vastly reduce mess and disturbance during installation.



No mechanical fixings are required. The weight of the slab holds the system in place. As the paving slabs are suspended, the waterproofing membrane is not pierced or compromised in any way.

Installation is much faster, cleaner and easier than by bedding paving slabs into mortar. They also future-proof the roof deck, as they can be lifted at any time if the deck beneath requires inspection or maintenance.

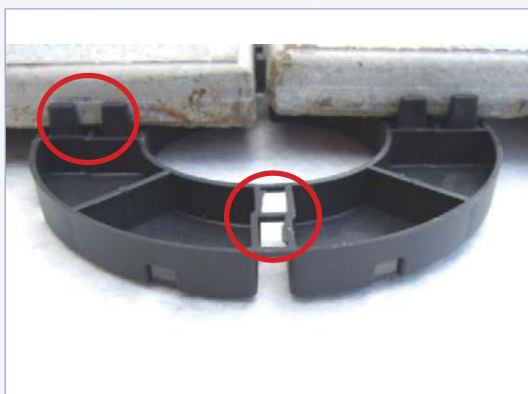
STANDARD PAVING LAYOUT

The positioning lugs separate the slabs and give a uniform paving line. One corner of the slab rests on a quadrant of the pedestal.



STRETCHER BOND / HALF BOND / STAGGERED LAYOUT

For stretcher bond paving schemes one of the positioning lugs can be removed so that a slab will rest on half of the pedestal head, which gives proper support.



5MM PVC PADS WITH SEPARATE CROSS SPACERS

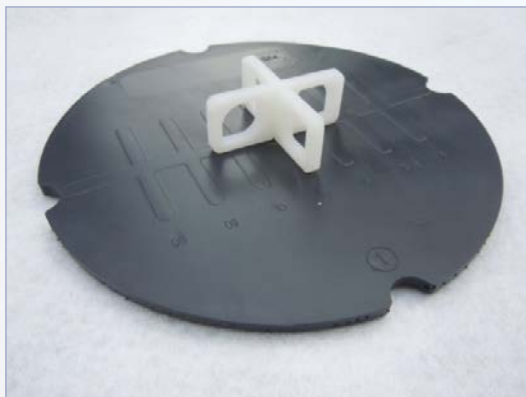
The range of paving pedestals and supports starts with the fixed height 5mm PVC pad. The system works by using a 5mm thick circular PVC disc and a separate loose cross spacer.

These ultra-thin paving pads give the minimal amount of lift off the deck. The membrane beneath is protected from direct contact with a heavy paving slab. If users wish to simply have protection and separation from the deck, this product is suitable.



This circular pad is manufactured from PVC and cut into a disc measuring 150mm in diameter. Both sides are smooth and flat. The cross spacer is made from polypropylene and is placed onto the upper surface. Since the cross spacers are not fixed to the PVC disc, there is not as much of the positioning guide given from other Wallbarn spacers and pedestals. These products are on offer where height thresholds are extremely limited and separation is the most important factor.

The cross spacers are available in a variety of thicknesses, so if users wish to have larger gaps between the paving slabs, flexibility is possible.



Cross spacers can also be used on the other Wallbarn paving pads and pedestals, where perhaps users wish to increase the gap between the slabs on paving areas already installed.

TECHNICAL DATA

CODE FOR PVC DISC	SP-RUB-005
CODE FOR CROSS SPACERS	SP-PLA-003-CROSS SPACER
	SP-PLA-004-CROSS SPACER
	SP-PLA-005-CROSS SPACER
MATERIAL	PVC
THICKNESS / HEIGHT OFF SURFACE	5MM
WIDTH OF CROSS SPACERS (DISTANCE BETWEEN PAVING SLABS)	3MM, 4MM & 5MM WIDTH AVAILABLE
CROSS SPACER HEIGHT	20MM
WEIGHT TOLERANCE / BEARING CAPACITY	8,000KG
OUTER DIAMETER	150MM
APPEARANCE	FLAT DISC BOTH SIDES

6MM PVC PADS FOR PAVING

The range of paving pedestals and supports continues with the fixed height 6mm PVC paving pad with integrated positioning lugs. This system works by inserting the paving lug headpiece onto a 5mm flat PVC pad. The headpiece itself is 1mm thick so a 6mm high paving pad is created.

These ultra-thin paving pads give adequate lift off the deck. The membrane beneath is protected from direct contact with a heavy paving slab.



There is no mechanical fixing required, the surface is secured by the weight of the slab. This cuts down weight on the roof and also the hassle and mess of laying slabs into mortar. This leads to easier, cheaper and faster installation and makes post-installation site inspection or leak detection much easier.

This circular pad is manufactured from PVC into 150mm in diameter disc. The upper surface is flat.

The lugged headpieces are available in a number of different lug thicknesses. The standard thickness is 2.2mm, but a 4mm, 6mm, 8mm and 10mm wide lug can be used with the disc to create larger gaps between each paving slab.



For fine adjustments to the level or the height, Wallbarn Levelling Shims can be used. Placed on the upper side of the discs, these plastic shims are supplied 1mm, 2mm and 3mm thick. They can be snapped into quarters or halves, where only one side of the disc needs height alteration. Please see section - Accessories for Fixed Height Pads.

TECHNICAL DATA

CODE	SP-RUB-006-PAVING
MATERIAL	PVC
THICKNESS / HEIGHT OFF SURFACE	6MM
LUG WIDTH (DISTANCE BETWEEN PAVING SLABS)	2.2MM STANDARD WIDTH (4MM, 6MM, 8MM & 10MM ALSO AVAILABLE)
LUG HEIGHT	15MM
WEIGHT TOLERANCE / BEARING CAPACITY	8,000KG
OUTER DIAMETER	150MM
APPEARANCE	FLAT DISC BOTH SIDES

7MM PVC PADS FOR PAVING

The next height of paving pedestals and supports is the fixed height 7mm PVC paving pad.

These ultra-thin paving pads still provide adequate drainage. By lifting the slab off the deck the rainwater is able to be channelled between and below it and towards the drainage outlet. This prevents ponding on the surface. The paving lugged headpiece sits into a slight indent which is moulded into the PVC pad, so the overall height remains at 7mm thick. Again, there is no mechanical fixing required, the weight of the slab holds everything secure and in place.



This circular pad is manufactured from PVC into a 150mm diameter disc. The upper surface is moulded into a series of circular ridges and grooves which encourages the rainwater to run off the surface of the pad. Water will not be held between the gaps in paving as there is a clear escape route.

These pads are ideal for areas where the height threshold is restricted. This is often the case in refurbishment projects, where an existing surface or system is overlaid.



The PVC compound means these pads have a soft, flexible, hard-wearing profile; helping to protect the membrane beneath from damage. PVC will also offer acoustic properties and create a separation layer from the deck. They are extremely tough and durable and will also not become brittle in cold weather.

The removable headpiece is manufactured in plastic and is clicked into place through a hole in the centre of the pad. A large range of different sized lug widths are available.

For fine adjustments to the level or the height, Wallbarn Levelling Shims can be used. Placed on the upper side of the discs, these plastic shims are supplied 1mm, 2mm and 3mm thick. They can be snapped into quarters or halves, where only one side of the disc needs height alteration. Please see section - Accessories for Fixed Height Pads.

TECHNICAL DATA

CODE	SP-RUB-007-PAVING
MATERIAL	PVC
THICKNESS / HEIGHT OFF SURFACE	7MM
LUG WIDTH (DISTANCE BETWEEN PAVING SLABS)	2.2MM STANDARD WIDTH (4MM, 6MM, 8MM & 10MM ALSO AVAILABLE)
LUG HEIGHT	15MM
WEIGHT TOLERANCE / BEARING CAPACITY	8,000KG
OUTER DIAMETER	150MM
NUMBER OF DRAINAGE HOLES	6

9MM RUBBER PAVING SUPPORT PADS

The 9mm Rubber Paving Support Pads have a slightly different design. They are manufactured into a circular ring with a hollow centre. They are made from a compound of synthetic and natural rubber and are designed to be tough, flexible and durable, able to tolerate heavy loads without damaging the surface beneath.



Since the 9mm Rubber Paving Support Pads are made from synthetic rubber as opposed to plastic, they offer the distinct advantages of being flexible and easy to cut. They have a rounded edge to prevent denting the membrane beneath, making them ideal for installation directly onto more delicate surfaces, such as insulation or single ply. They are extremely tough and durable, with a weight tolerance of 8 tonnes.

They also offer sound and vibration insulation, and are extremely resistant to extremes of heat and cold. They will not become brittle in cold weather. The rubber compound ensures that the pads give a certain amount of grip, and will not slip on the surface beneath when being installed.



As with all the Wallbarn paving pedestals, there is no mechanical fixing required with the Rubber Paving Support Pads or any need to lay slabs in mortar – the surface is secured by the weight of the slab or covering. Contractors can take up, reposition, or change completely the slabs, or inspect the deck beneath at any time without issue.



The lugs ensure that the paving slabs are clearly separated from each other with regular spacing, giving a uniform paving line and making the installation process fast, easy and without mess.

The 5mm gap provides good drainage between and beneath the slabs, which are lifted high enough off the sub-deck to ensure no blockages occur. On the underside there are a series of grooves which channel rainwater away from the centre of the ring, so no standing water is left in the long-term.



The material itself is extremely tough but flexible, meaning that the sub-deck is somewhat cushioned from the slabs. The pads will not slip on the sub-deck and they can be laid onto very hard surfaces such as concrete or glass without scratching or damage.



ADJUSTMENT / HEIGHT INCREASES

Often roof decks and surfaces will have dips or ridges in certain areas and increases and adjustments will need to be made to individual pads to ensure the slabs are smoothly laid. These fine adjustments can be made with Wallbarn Levelling Shims. Placed on the upper side of the support pads, these plastic shims are supplied 1mm, 2mm and 3mm thick. They can be snapped into quarters or halves, where only one side of the support pad needs height alteration. Please see section - Accessories for Fixed Height Pads.

If users require a greater height than 9mm, then a multiple number of shims can be added to create a thickness of 13mm.

TECHNICAL DATA

MATERIAL	SYNTHETIC / NATURAL RUBBER COMPOUND
THICKNESS / HEIGHT OFF SURFACE	9MM
LUG WIDTH (DISTANCE BETWEEN PAVING SLABS)	5MM
LUG HEIGHT	9MM
WEIGHT TOLERANCE / BEARING CAPACITY	8,000KG
OUTER DIAMETER	120MM
INNER DIAMETER	55MM
THICKNESS OF DRAINAGE CHANNELS	4MM PER CHANNEL (8 CHANNELS PER PAD)

14MM & 17MM FIXED HEIGHT PADS

Wallbarn supplies a range of standard plastic paving rings for cost effective standard paving schemes. Our paving spacers are made from injection moulded high density polypropylene made from recycled plastic. The ring shaped pad is a simple design, but very hard wearing and tough. They are circular in shape with a hollow middle and a smooth, flat underside. They are particularly ideal for ballasting inverted waterproofing systems.



Paving slabs are suspended on the pads so that the corners of four slabs rest on the four segments. The 3mm thick positioning lugs, which are located at right angles to each other, position and separate the slabs to ensure sufficient drainage. The rainwater passes through these gaps and underneath the slabs towards the roof outlet. The whole system is held securely in place by the weight of the slab.



The suspended system ensures that there is no standing water on top of the slabs and the rainwater can be channelled and collected efficiently.

There are a series of small holes within each segment of the support pad for drainage, meaning water does not collect either in the hollow outer ring or in the central hole.

The positioning lugs ensure clear, consistent spacing between each slab, which gives uniform, straight paving lines. This speeds up the installation process significantly and creates an attractive, superior finish to paved areas.

Wallbarn plastic fixed height support pads are made from recycled HDPE, making them strong and resistant to the elements. It is vital that these pads can withstand cold temperatures in the long-term.

Beware poor quality pads which become brittle and shatter in cold temperatures – they risk the safety of pedestrians.

Wallbarn plastic paving pads are lightweight and easy to handle, but also strong and durable. They are easy to lay out and position, and the installation process is fast, efficient and clean.



Mortar or binding is not required, meaning less mess and weight on the roof. Structural movement is not a problem since the slabs are suspended. No fixings are required in the system, so nothing penetrates the waterproofing membrane. Manufacturers' warranties are therefore unaffected.

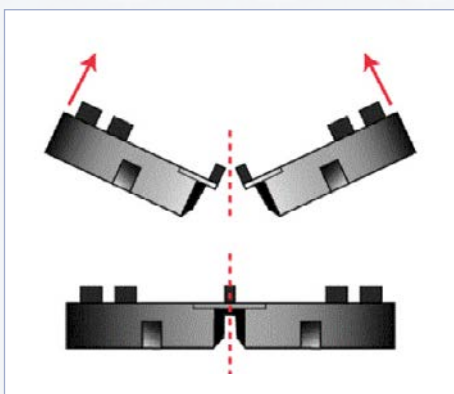


Wallbarn recommends that a maximum of 2 units are ever stacked up. Please see our adjustable pedestal section for paving schemes that exceed this maximum.

DETAILING

The support pads are made in four quadrants joined together with a small link. They can be easily snapped into segments of a half or quarter to support paving slabs up to edges or around corners.

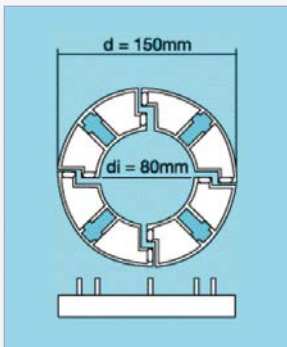
This eliminates wastage and gives a tidier finish to details.



REMOVING THE LUGS

For stretcher bond paving patterns, or if contractors are laying very large or very thin tiles which require additional support under the centre, the lug fittings can be removed to create a flat disc.

A sharp knife should be used to remove the lug fitting on one of the segments and the slab laid down onto one half (rather than one quarter) of the support pad.



TECHNICAL DATA

MATERIAL	INJECTION MOULDED HDPE
THICKNESS / HEIGHT OFF SURFACE	14MM & 17MM
LUG WIDTH (DISTANCE BETWEEN PAVING SLABS)	3MM
LUG HEIGHT	9MM
WEIGHT TOLERANCE / BEARING CAPACITY	400KG
OUTER DIAMETER	150MM
INNER DIAMETER	80MM
THICKNESS OF DRAINAGE CHANNELS	8MM PER CHANNEL (4 CHANNELS PER PAD)

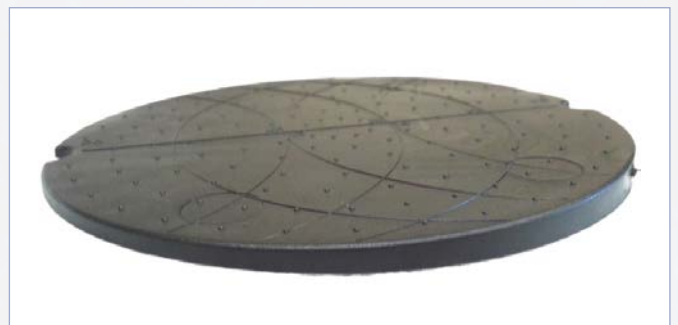
WEDGE SHAPED PVC SHIMS / SLOPE CORRECTORS FOR FIXED HEIGHT PADS

These PVC discs are similar to the 5mm PVC discs but are manufactured in a wedge shape.

They have a thickness which slopes from 3mm up to 8mm.

They can help to protect the waterproofing membrane beneath the pads and act as an acoustic layer.

They are also effective slope correctors for the fixed height pads keeping them vertical, arresting the falls of the deck beneath.



ACCESSORIES FOR FIXED HEIGHT PADS

Fixed height paving pads often require levelling up in some sections, where the deck level changes at certain points across the roof. These minor changes can be addressed with the use of levelling shims.



1mm & 2mm shim



3mm shim

Levelling shims are manufactured 1mm, 2mm and 3mm thick and have been designed to fit on top of all fixed height support pads to make up those small differences in the level. Applicators can simply hang a levelling shim over the positioning lugs on the pad to make up the difference.



2mm shim on 9mm rubber pad



2mm shim snapped in half to prevent slab rocking



3mm shim on 14mm plastic pad

The shims will overhang the rubber ring slightly, but this is not an issue. The weight of the slab will ensure that the whole system is held in place properly. Multiple numbers of shims can be added to the pads, but care should be taken that the lug does not become engulfed as this will affect the paving guide.

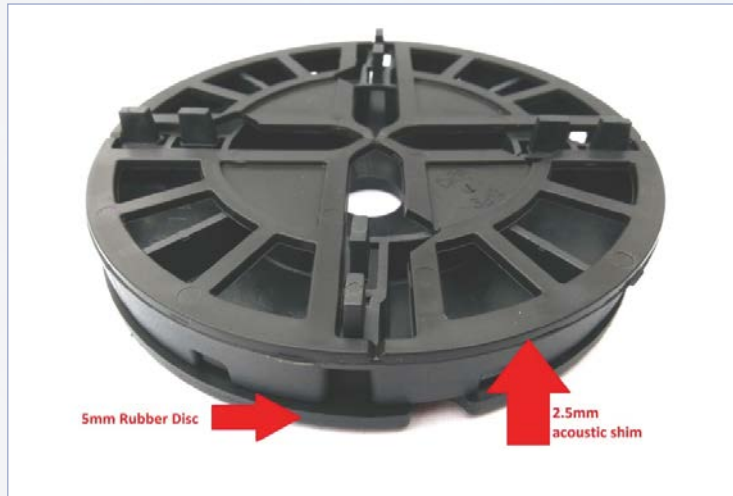
All the shims can be snapped apart into a half shape or into quarters where only one corner needs extra support. This is often required where just one of the flags becomes unsteady and needs bringing up to the level of the others.



1mm, 2mm and 3mm shims can also be used on top of standard ASP headpieces on adjustable pedestals. Please see the section on ASP.

TPE ACOUSTIC / ANTI-SHOCK SHIMS

The 2.5mm thick acoustic shims are an effective vibration or sound control layer. They can deaden the sound of pedestrian traffic over tiles or timber decking (very useful when terraces are being installed on top of dwellings below) and give extra protection.



They are the same shape as the plastic 3mm shim, but are made from flexible TPE. The shock absorbing shims are loose fitted so no fixings or ties are needed. They are simply laid onto the pad / pedestal and hooked over the positioning lugs on the headpiece of the pad / pedestal. Installation is fast and easy.

The shims will also give extra protection to the slabs or tiles themselves, acting as a cushion between the slab and the plastic support pad / pedestal, reducing the risk of damage caused by vibration over time.



This can be of enormous benefit on housing projects, in particular where terraces or walkways are constructed on top of domestic properties, and can drastically improve the experience of residents.

Additional acoustic protection and insulation can be achieved by also loose fitting a 5mm PVC disc underneath the paving pad.

TECHNICAL DATA

CODE	SP-PLA-001-SHIM	SP-PLA-002-SHIM	SP-PLA-003-SHIM	SP-RUB-0025	SP-RUB-003-Z
DESCRIPTION	1MM SHIM	2MM SHIM	3MM SHIM	SHOCK ABSORBING SHIM	PVC WEDGE SHIM
MATERIAL	INJECTION MOULDED POLYPROPYLENE			(TPE = 2.5 SHIM) (PVC = 3-8MM)	
THICKNESS	1MM	2MM	3MM	2.5MM	3-8MM
WEIGHT TOLERANCE	400KG	400KG	400KG	8,000KG	8,000KG
OUTER DIAMETER	150MM	150MM	150MM	150MM	150MM

MINI-MEGAPADS FOR PAVING

Brand new for 2017 is an ultra-low but fully adjustable pedestal for paving slabs. Installers had been asking for a further adjustment range on areas with very tight height thresholds, and given the popularity of the existing Mini Megapads, we set out to design a unit which went even lower.



This Mini-Megapad is a completely new design of pedestal, able to reach as low as 10mm in height and still be adjustable by hand. The large grips on the outside of the unit allow fingers to twist the stem to adjust the height by up to 5mm.

Additionally, we have designed a 5mm extension plate for use with these Mini-Megapads to increase the height range. Whilst a complete Mini-Megapad unit will contain a single extension plate an additional extension plate can be purchased separately and added if required.



This way, contractors can have millimetre exact adjustment from 10mm to 20mm using these units, and if they need to go higher they can move onto the next height of Mini Megapads which start at 22mm.

The standard lug width is 2mm, but for schemes where larger gaps between slabs are required; 4mm, 6mm, 8mm and 10mm wide positioning lugs are available.

Should installers wish to arrest the fall or tilt of the pedestals, Wallbarn recommends using the PVC wedge 3-8mm shims placed under the bases.

TECHNICAL DATA

CODE	SP-MEG-010	SP-PLA-005-SHIM
HEIGHT	10-20MM	5MM
MATERIAL	INJECTION MOULDED POLYPROPYLENE	
NORMAL WEIGHT TOLERANCE	683KG	
MAX LOAD	1171KG	
LUG WIDTH	2MM STANDARD WIDTH (4MM, 6MM, 8MM & 10MM ALSO AVAILABLE)	
LUG HEIGHT	15MM STANDARD (10MM ALSO AVAILABLE)	
DIAMETER OF HEAD	150MM	
DIAMETER OF BASE	150MM	

MINI-MEGAPADS FOR PAVING

The next sizes of Mini-Megapad are the 22-30mm and the 28-37mm. These have a slightly different design and a major advantage over the fixed height rings is that installers of suspended paving systems can twist the telescopic stem of these units to get the most minute and accurate adjustments in height.



Manufactured to a similar specification to the higher Megapad range featured later, but with a slightly lower weight tolerance of 683kg per unit Normal Weight Tolerance (end of linear behaviour) with a Maximum Load of 1171kg, these polypropylene units have a flat headpiece and base plate measuring 150mm in diameter. The lug separators are supplied as separate units which click into the central hole to provide the 2mm gap between paving slabs.



The integrated thread in the central column allows for height adjustment. The paving slab is laid onto the pad / pedestal and the head is twisted while the slab is in place. This avoids having to repeatedly lift heavy slabs when changing the height level.

It makes the installation process far faster and easier. The height can be finely tuned whilst the slab is in place whereas with fixed height pads, the slab needs to be constantly lifted and replaced to add levelling shims.

The standard lug width is 2mm, but for schemes where larger gaps between slabs are required; 4mm, 6mm, 8mm and 10mm wide positioning lugs are available.



The underside of the pad is a smooth, solid, flat surface. The weight of the slab above can be evenly distributed across the 150mm diameter. This prevents point loading and any risk of the slabs digging into the surface beneath, a crucial consideration when installing slabs onto delicate waterproofing membranes or insulation.



SLOPE CORRECTORS

On the underside there is a circular groove cut into the base where the Wallbarn slope correctors, featured on page 26, can be slotted into place. These take out the slope of the deck and ensure the Mini-Megapads sit exactly vertical and stable.

An alternative slope corrector is the PVC 3-8mm wedge shaped disc found on page 9. The Mini-Megapad will sit onto the PVC wedge without any fixing, but the weight of the slab should hold everything in place.

Of course these Mini-Megapads can also be fitted with TD headpieces for use with timber decking. Please see page 38 for more details.

TECHNICAL DATA

CODE	SP-MEG-022	SP-MEG-028
HEIGHT	22-30MM	28-37MM
MATERIAL	INJECTION MOULDED POLYPROPYLENE	
LUG WIDTH	2MM STANDARD WIDTH (4MM, 6MM, 8MM & 10MM ALSO AVAILABLE)	
LUG HEIGHT	15MM	
DIAMETER OF HEAD	150MM	
DIAMETER OF BASE	150MM	
NORMAL WEIGHT TOLERANCE	683KG	
MAX LOAD	1171KG	
MAXIMUM TEMPERATURE	PLUS 75°C	
MINIMUM TEMPERATURE	MINUS 40°C	

ASP ADJUSTABLE PAVING PEDESTALS / SUPPORT PADS

Best practice for roof and terrace design is to ensure the deck is built to a fall to allow proper drainage. To alleviate the fall across the area, for the very best results, applicators should use ASP adjustable height pedestals / support pads. ASP pedestals are ideal when a very high clearance is required across the area, where a large amount of adjustment is needed or very accurate and minor changes in the level are desired.

ASP pedestals have a very high height range, from 25mm up to 380mm (in the ASP EXTRA range).



ASP pedestals offer a major advantage over fixed height pads. More luxurious finishes are possible and they offer a far easier, faster and more effective method of laying suspended paving systems. Paving or decking tiles can be fitted up to the threshold level on roof decks or terraces without any risk of flooding.

The 2.2mm positioning lugs create a gap between each slab which allows rainwater to pass between and beneath them. These lugs give a clear paving line, so the slabs can be laid in a straight line quickly and easily.



This is a suspended system, so the pedestals are not fixed to the deck. This means there is no risk of the delicate waterproofing membrane beneath being pierced or damaged and warranties are unaffected. The weight of the slabs is spread through the base plates. If the deck ever needs to be inspected, the system can be taken up easily.

Wallbarn adjustable pedestals are made from injection moulded polypropylene. They have weight tolerance of 683kg per unit Normal Weight Tolerance (end of linear behaviour) with a Maximum Load of 1171kg and the strength and consistency have been tested in the laboratory at temperature ranges from +75° Celsius to -40° Celsius.

The cavity created allows the structure to ventilate more effectively. It allows a greater amount of water to pass into the drains without surface flooding. DPCs are not compromised as the slabs are not fixed to the walls.

Structural movement is not an issue as the slabs are not mortared together, so no cracks will appear.

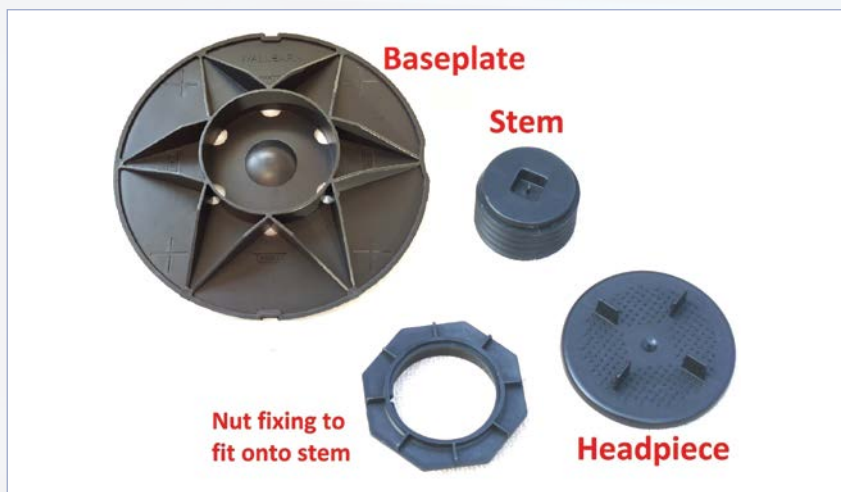


This cavity also provides opportunities to hide unsightly objects, such as water pipes, electricity cables, drainage outlets and manholes beneath the paving slabs. Drainage outlets are unobstructed.

ASSEMBLY

These robust pedestals / supports are manufactured from injection moulded polypropylene and can tolerate loads of 683kg per unit Normal Weight Tolerance (end of linear behaviour) with a Maximum Load of 1171kg. They also have a very large tolerance to temperature change and will not crack in freezing temperatures.

The large baseplate holds the stem and nut fixing in the central collar. The headpiece slots into the square indent pressed into the stem (the height of the pedestal is shown on the inside of the indent) and the whole unit is created.



The baseplate is manufactured with diagonal arms spreading out across the face of it. This ensures that the weight is spread to the maximum possible area and does not concentrate on the core.

The pedestal is placed down and the slab is laid on top of the head piece. With the slab in situ, installers use their fingers to twist the nut fixing on the stem up and down to adjust the height. There is no need to constantly remove and replace the slab.



If the height becomes very tight, installers can use the Wallbarn "Easykey" to help twist the nut fixing on the stem.

ASP pedestals are often used on the more high end projects, where designers and contractors wish to create seamless hard landscaping on roof decks where there may be multiple steps and ridges; where existing levels need to be matched, or where services and outlets need to be covered.



Even large differences in the height of the deck can be alleviated, creating one level across the whole area. By suspending the paving off the deck, truly beautiful finishes can be achieved on flat roofs and structural decks.



Slope correctors can be fitted to the baseplates of all ASP supports. Please see page 26 for more information.

TRIMMING THE BASE PLATES

The base plates are manufactured with a series of guide lines, in case users wish to trim them. This may be required when paving up to the wall or around existing pipework or details.

The lines are marked as “Trim” lines, so installers can use an electric or handsaw to cut the bases back to the trim line, making the baseplate smaller.

It is important not to cut the bases any further than the level of the trim line as this will affect the stability of the pedestal.





TECHNICAL DATA

MATERIAL	INJECTION MOULDED POLYPROPYLENE
NORMAL WEIGHT TOLERANCE	683KG
MAX LOAD	1171KG
MAX TEMPERATURE	PLUS 75 °C
MIN TEMPERATURE	MINUS 40 °C
BASE PLATE DIAMETER	200MM OR 150MM ❶
HEADPIECE DIAMETER	120MM
LUG HEIGHT	18MM OR 10MM ❷
LUG WIDTH / THICKNESS	2.2MM, 4MM, 6MM, 8MM, 10MM ❷
CODE	DESCRIPTION / SIZE
SP-ASP-025-FIXED	ASP 25MM FIXED PAD
SP-ASP-035-FIXED	ASP 35MM FIXED PAD
SP-ASP-035	35-50MM ASP ADJUSTABLE SUPPORT PAD
SP-ASP-050	50-70MM ASP ADJUSTABLE SUPPORT PAD
SP-ASP-065	65-100MM ASP ADJUSTABLE SUPPORT PAD
SP-ASP-095	95-130MM ASP ADJUSTABLE SUPPORT PAD
SP-ASP-125	125-160MM ASP ADJUSTABLE SUPPORT PAD
SP-ASP-155	155-190MM ASP ADJUSTABLE SUPPORT PAD
SP-ASP-185	185-220MM ASP ADJUSTABLE SUPPORT PAD
SP-ASP-210	210-245MM ASP ADJUSTABLE SUPPORT PAD
SP-ASP-240	240-275MM ASP ADJUSTABLE SUPPORT PAD
SP-ASP-270	270-305MM ASP ADJUSTABLE SUPPORT PAD
SP-ASP-300	300-335MM ASP ADJUSTABLE SUPPORT PAD
SP-ASP-330	330-365MM ASP ADJUSTABLE SUPPORT PAD
❶ PLEASE SEE SECTION ON MINI BASES	❷ PLEASE SEE SECTION ON HEADPIECES

BALANCE ADJUSTABLE PEDESTALS FOR PAVING

Wallbarn announces the launch of its new BALANCE adjustable pedestals for paving. These specially designed self-levelling headpieces have been developed to give installers of paving slabs extra scope and flexibility to accommodate differences in the deck surface below the pedestal.

Sometimes blemishes and ridges in the sub-deck, or changes in thickness of the actual slab can make the upper surface uneven at certain points. The BALANCE adjustable pedestal for paving helps alleviate these issues.



This unique design is robust, stable and durable. The headpiece is composed of four separate parts which have been created to allow up to a 5% or 2.86° slope correction. The mechanism at the bottom of the headpiece allows smooth movement and positioning of the paving slab. Slips and sharp tilting are avoided owing to the superior design and solid manufacture. The headpiece section attached to this moving mechanism is 120mm in diameter with integrated positioning lugs moulded into it.

A rubber anti-shock slots onto the headpiece over a series of ridges to give better grip to the slab and to help insulate against vibration and noise travelling through the pedestal to the deck beneath. A fixing plug is set in the centre of the headpiece to lock all parts together.

These headpieces are substantial in size and 15mm thick, so the heights of the pedestals are different to the ASP range. A full table of the heights of the new BALANCE range are given overleaf.

BALANCE EXTRA

'BALANCE pedestals are also available to accompany the EXTRA range. Again, the heights are different to those of the ASP EXTRA range. A full table of the heights of the new BALANCE EXTRA range are given overleaf.



25-50MM BALANCE ADJUSTABLE PEDESTALS

The BALANCE 25-50mm pedestal is a newly designed pedestal, which has been developed to make paving at low height thresholds easier for installers. The unique design incorporates a series of steps and notches moulded into the centre of the unit.



Set at 25mm on lower notches



Set at 50mm on highest notches and 2 extension plates

A small “PULL” tab on the side enables installers to open up the pedestal and set at different heights, depending on which sized notch they decide to connect together. Each setting is 5mm higher at each step. By changing the setting of the notches, installers can create a 25-30mm pedestal, a 30-35mm pedestal and a 35-40mm pedestal.

A telescopic thread is moulded into the centre of the unit to give very fine alteration in the height. The thread will give an additional 5mm of height range and users can be millimetre precise when turning the pedestal.

By adding special 5mm thick extension plates at the base, users can further increase the size, to 40-45mm and 45-50mm. The standard lug height is 10mm, to reflect the lower height threshold of the actual pedestal and the fact that often very thin tiles are used with these products. Alternative higher and thicker lugs can be used if required.

TECHNICAL DATA

MATERIAL	INJECTION MOULDED POLYPROPYLENE
NORMAL WEIGHT TOLERANCE	683KG
MAX LOAD	1171KG
MAX TEMPERATURE	PLUS 75 °C
MIN TEMPERATURE	MINUS 40 °C
BASE PLATE DIAMETER	200MM OR 150MM ❶
EXTENSION PLATE SIZE	5MM THICK X 150MM DIAMETER ❷ – FOR BAL-025 ONLY
HEADPIECE DIAMETER	120MM
LUG HEIGHT	10MM
LUG WIDTH / THICKNESS	2MM STANDARD (4MM, 6MM, 8MM & 10MM AVAILABLE)
DEGREE OF SLOPE ON HEAD	5% - APPROX. 2.86°
BALANCE PEDESTALS	
CODE	DESCRIPTION / SIZE
SP-BAL-025	25-50MM BALANCE ADJUSTABLE PEDESTAL ❷
SP-BAL-050	50-65MM BALANCE ADJUSTABLE PEDESTAL
SP-BAL-065	65-85MM BALANCE ADJUSTABLE PEDESTAL
SP-BAL-080	80-115MM BALANCE ADJUSTABLE PEDESTAL
SP-BAL-110	110-145MM BALANCE ADJUSTABLE PEDESTAL
SP-BAL-140	140-175MM BALANCE ADJUSTABLE PEDESTAL
SP-BAL-170	170-205MM BALANCE ADJUSTABLE PEDESTAL
SP-BAL-200	200-235MM BALANCE ADJUSTABLE PEDESTAL
SP-BAL-225	225-260MM BALANCE ADJUSTABLE PEDESTAL
SP-BAL-255	255-290MM BALANCE ADJUSTABLE PEDESTAL
SP-BAL-285	285-320MM BALANCE ADJUSTABLE PEDESTAL
SP-BAL-315	315-350MM BALANCE ADJUSTABLE PEDESTAL
SP-BAL-345	345-380MM BALANCE ADJUSTABLE PEDESTAL
BALANCE EXTRA	
SP-BAL-EXTRA-100	100-150MM BALANCE EXTRA ADJUSTABLE PEDESTAL
SP-BAL-EXTRA-140	140-230MM BALANCE EXTRA ADJUSTABLE PEDESTAL
SP-BAL-EXTRA-225	225-395MM BALANCE EXTRA ADJUSTABLE PEDESTAL
❶ PLEASE SEE SECTION ON MINI BASES	

FLAT HEADED ADJUSTABLE SUPPORTS

Wallbarn supplies a full range of flat headed adjustable pedestals in exactly the same heights as the ASP and ASP EXTRA ranges. When installing larger paving slabs; for example, those over 600mm, thinner tiles (such as 20mm thick tiles) or soft stones such as slate; just having a pad in each corner may not give sufficient support.



Users can lay a flat headed pedestal under the centre of these slabs to give additional support, eliminating the risk of breakages. They are manufactured in the same way as the ASP and ASP EXTRA ranges and match the technical specification in terms of weight and temperature tolerance. Cross spacers, as featured on page 2, can be used to provide spacing between slabs if required.

TECHNICAL DATA

MATERIAL	INJECTION MOULDED POLYPROPYLENE
NORMAL WEIGHT TOLERANCE	683KG
MAX LOAD	1171KG
MAX TEMPERATURE	PLUS 75 °C
MIN TEMPERATURE	MINUS 40 °C
BASE PLATE DIAMETER	200MM OR 150MM ^❶
HEADPIECE DIAMETER	120MM
CODE	DESCRIPTION / SIZE
SP-FLAT-025-FIXED	FLAT HEADED 25MM FIXED PAD
SP-FLAT-035-FIXED	FLAT HEADED 35MM FIXED PAD
SP-FLAT-035	35-50MM FLAT HEADED ADJUSTABLE SUPPORT PAD
SP-FLAT-050	50-70MM FLAT HEADED ADJUSTABLE SUPPORT PAD
SP-FLAT-065	65-100MM FLAT HEADED ADJUSTABLE SUPPORT PAD
SP-FLAT-095	95-130MM FLAT HEADED ADJUSTABLE SUPPORT PAD
SP-FLAT-125	125-160MM FLAT HEADED ADJUSTABLE SUPPORT PAD
SP-FLAT-155	155-190MM FLAT HEADED ADJUSTABLE SUPPORT PAD
SP-FLAT-185	185-220MM FLAT HEADED ADJUSTABLE SUPPORT PAD
SP-FLAT-210	210-245MM FLAT HEADED ADJUSTABLE SUPPORT PAD
SP-FLAT-240	240-275MM FLAT HEADED ADJUSTABLE SUPPORT PAD
SP-FLAT-270	270-305MM FLAT HEADED ADJUSTABLE SUPPORT PAD
SP-FLAT-300	300-335MM FLAT HEADED ADJUSTABLE SUPPORT PAD
SP-FLAT-330	330-365MM FLAT HEADED ADJUSTABLE SUPPORT PAD
SP-FLAT-EXTRA-085-Z	85-135MM EXTRA FLAT HEADED ADJUSTABLE SUPPORT PAD
SP-FLAT-EXTRA-125-Z	125-215MM EXTRA FLAT HEADED ADJUSTABLE SUPPORT PAD
SP-FLAT-EXTRA-210-Z	210-380MM EXTRA FLAT HEADED ADJUSTABLE SUPPORT PAD
^❶ PLEASE SEE SECTION ON MINI BASES	

ASP EXTRA EXTENDED RANGE OF HEIGHT PER UNIT

ASP EXTRA pedestals were developed due to feedback Wallbarn had received from customers. Clients asked for pedestals with a much greater amount of adjustment per unit and the ASP EXTRA range means that contractors can adjust from 85mm up to 380mm in only three different sized units.



When working on very large roofs or areas where the falls are not always consistent, installers require the added flexibility and scope to adjust pedestals by a far greater amount. This is often the case on refurbishment projects or roof decks which have steps or awkward changes in level. This makes the estimating process significantly easier and avoids having to swap sizes if the levels on site are different to the levels on the original drawings.



ASP EXTRA 85-135mm



ASP EXTRA 125-215mm



ASP EXTRA 210-380mm



TECHNICAL DATA

MATERIAL	INJECTION MOULDED POLYPROPYLENE
NORMAL WEIGHT TOLERANCE	683KG
MAX LOAD	1171KG
MAX TEMPERATURE	PLUS 75 °C
MIN TEMPERATURE	MINUS 40 °C
BASE PLATE DIAMETER	200MM OR 150MM ❶
HEADPIECE DIAMETER	120MM
LUG HEIGHT	18MM OR 10MM ❷
LUG WIDTH / THICKNESS	2.2MM, 4MM, 6MM, 8MM, 10MM ❷
CODE	DESCRIPTION
SP-ASP-EXTRA-085-Z	85-135MM EXTRA ASP ADJUSTABLE SUPPORT PAD
SP-ASP-EXTRA-125-Z	125-215MM EXTRA ASP ADJUSTABLE SUPPORT PAD
SP-ASP-EXTRA-210-Z	210-380MM EXTRA ASP ADJUSTABLE SUPPORT PAD
❶ PLEASE SEE SECTION ON MINI BASES	❷ PLEASE SEE SECTION ON HEADPIECES

MINI BASES – PAVING UP TO THE EDGE

Mini Bases have been developed so contractors can pave directly up to the wall or parapet effectively.

Mini Bases are designed for use with the ASP and ASP EXTRA range. They have a 150mm diameter base plate (the standard diameter baseplate is 200mm) which means the paving slab can be butted up against the upstand or parapet wall without a gap between that slab and the wall.



For best results, snap two of the positioning lugs off the head piece (or ask for the special 2 lugged headpiece from Wallbarn) and lay only the corners of two slabs – rather than four – onto the headpiece.

The slabs are properly supported and stable. There is no risk of the slab tipping up as it is not overhanging.

The baseplates will fit any height of ASP or ASP EXTRA pedestal. The strength and weight tolerance is the same as with the standard bases. Point loading is slightly increased, however.



Ask for MINI BASES for edges, parapets and perimeters.

TECHNICAL DATA

MATERIAL	INJECTION MOULDED POLYPROPYLENE	
NORMAL WEIGHT TOLERANCE	683KG	
MAX LOAD	1171KG	
MAX TEMPERATURE	PLUS 75 ° C	
MIN TEMPERATURE	MINUS 40 ° C	
BASE PLATE DIAMETER	150MM	
HEADPIECE DIAMETER	120MM	
LUG HEIGHT	18MM OR 10MM ②	
CODE	DESCRIPTION	SUITABLE FOR
SP-BASE-MB-025	SMALL MINI BASE PLATE - 150MM DIAMETER	ASP 25MM FIXED & ASP 35-50MM
SP-BASE-MB-035	LARGE MINI BASE PLATE - 150MM DIAMETER	ASP 35MM FIXED & ASP 50MM AND ABOVE (INC ASP EXTRA)
② PLEASE SEE SECTION ON HEADPIECES		

METAL EDGING PLATE FOR PAVING

Wallbarn is introducing a new tool in 2017 to help installers of paving set their slabs directly up to the wall. The new Metal Edging Plate is a supporting beam which is laid onto the headpiece of ASP or Megapad pedestals to support the end paving slab when it is butting directly against the wall or parapet.

The plate has a raised edge which butts against it and braces the slab against the wall effectively.



The plate is held down by the weight of the two slabs laid on top of it and the pedestal and by jutting out it will support the two slabs which hang out over the headpiece of the pedestal. This removes any risk of the slabs tipping up if people stand on the very edge of them.

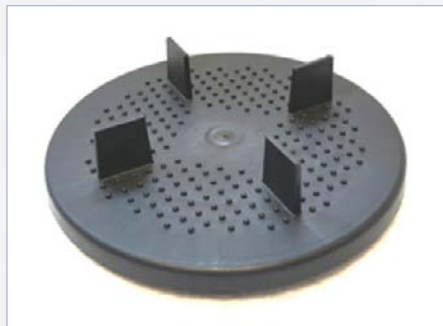


Ask Wallbarn for more details on the edging plates and best practice for paving to walls and exposed ledges.

DIFFERENT HEADPIECES FOR ASPs

Wallbarn offers a variety of headpieces, suitable for a number of different applications. All the headpieces are made from the same virgin fibre polypropylene as the other components of the ASP units.

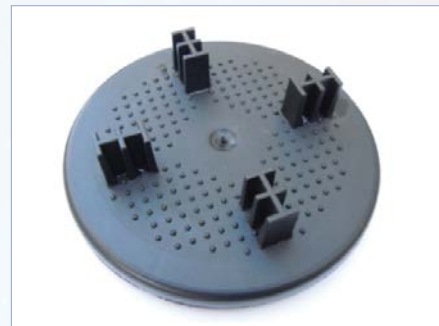
The STANDARD ASP HEADPIECE for ASP adjustable pedestals is the most common type of headpiece used for paving schemes. It measures 120mm diameter and has four lug fittings 2.2mm wide and 18mm high. This will hold a 50mm slab in place effectively and gives a sufficient amount of drainage between slabs. Wallbarn can offer variations to this standard headpiece, according to the needs of the client.



STANDARD ASP HEADPIECE
Lug size: 2.2mm thick
18mm high



4MM THICK LUGGED HEADPIECE
Lug size: 4mm thick
18mm high



10MM THICK LUGGED HEADPIECE
Lug size: 10mm thick
18mm high

If installers require a larger gap between the paving slabs, a 4mm thick Lugged Headpiece can be supplied which will allow a greater amount of water to pass through the gaps. This may be required where, for example; installers need to match up to an existing paving scheme using the 9mm rubber pads (on page 5).

A 6mm thick Lugged Headpiece (not pictured) and a 10mm thick Lugged Headpiece is also available, although designers should be sure that such a large gap does not present a trip hazard in some instances.



SHORT LUGGED HEADPIECE
Lug size: 2.2mm thick
10mm high



2 LUGGED HEADPIECE
Lug size: 2.2mm thick
18mm high



FLAT HEADED HEADPIECE
Zero Lugs

Where thinner slabs are being installed, such as porcelain tiles (which can typically be 20mm thick); the standard height lugs may be too visible for a truly fine finish. A SHORT LUGGED HEADPIECE, with 10mm high lugs, is available should this be the case.

2 LUGGED HEADPIECES can be used if irregular paving patterns are being laid, such as stretcher or half-bond schemes. The slab will need supporting not only at all four corners but also at every junction point, in a T junction or across a larger span. In these instances, this 2 lugged headpiece can be fitted onto the pedestal to allow adequate support at the edge.

These headpieces are also useful when paving directly up the parapet wall, where two slab corners, rather than the usual four, need to be supported. Please see the section on MINI BASES.

FLAT HEADED HEADPIECES are used if very large paving slabs are being installed and need additional support under the centre. Also, where very thin tiles or more delicate / soft stones are being laid (such as slate), then it is recommended that an additional pedestal is placed underneath the centre of the slab to give added support. The headpiece is completely flat, so will not scratch the paving or interfere with the levels.

For further information see section on FLAT HEADED ADJUSTABLE SUPPORTS.

SLOPE CORRECTORS FOR ASP & MEGAPAD PEDESTALS

Slope correctors are wedge shaped plastic levellers which are clipped or fitted onto the base plate of adjustable pedestals. They are suitable for use with ASP, TD and Megapad supports; including the new mini-Megapads, ASP MBs with the 150mm diameter base plate, the ASP and TD EXTRA range.

Slope correctors are available in three sizes, with a 1%, 2% and 3% gradient.

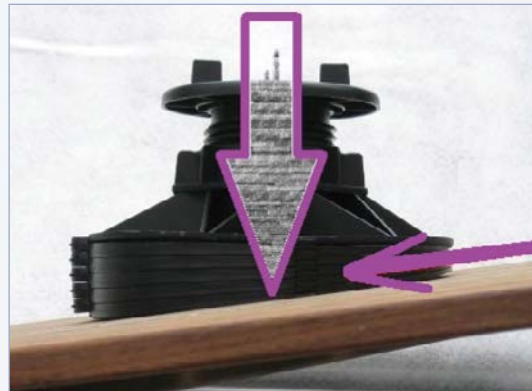
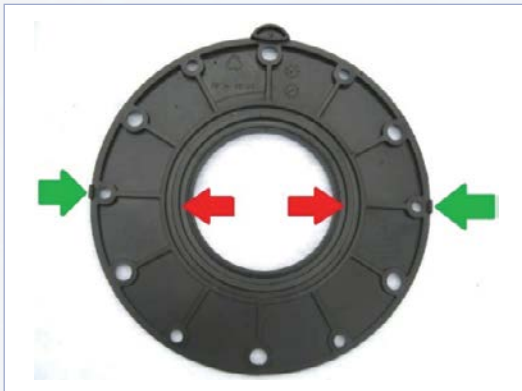


They are designed to arrest the fall of the roof or deck beneath – even “flat roofs” will be built to a fall for drainage. By having these wedges attached underneath, the support pads remain completely vertical and straight, which ensures the force of gravity runs directly vertical (see purple arrows below), preventing tilting and keeping the support pad more stable.

They are very easy to apply to the base plate. For the 200mm diameter base plates, two simple clips (green arrows) fix around the lip of the baseplate. All 150mm base plates have a groove inside the perimeter which slots into a series of ridges (red arrows) situated on the inner ring of the slope corrector.

More than one slope corrector can be applied if required as one can clip onto another very easily. Wallbarn recommends that pedestals are used on roof decks with a maximum slope of 10%.

The gradient or slope is measured as a percentage. The deck is most commonly laid to a fall around 1 in 40, so a 2% slope corrector is normally chosen.



TECHNICAL DATA

MATERIAL	INJECTION MOULDED POLYPROPYLENE	
MAX TEMPERATURE	PLUS 75 °C	
MIN TEMPERATURE	MINUS 40 °C	
OUTER DIAMETER	200MM	
INNER DIAMETER	82MM	
CODE	DESCRIPTION	SUITABLE FOR
SP-ASP-SLOPE001	1 PERCENT SLOPE CORRECTOR	ASP, ASP EXTRA, MEGAPAD, MINI-MEGAPADS TD, TD PLUS, TD MOBILE, TD MEGAPAD
SP-ASP-SLOPE002	2 PERCENT SLOPE CORRECTOR	
SP-ASP-SLOPE003	3 PERCENT SLOPE CORRECTOR	

MEGAPADS FOR PAVING

Some decks require a very high cavity beneath the paving slab, and there can be complicated areas where large steps and different levels are present across the deck. Often, large services such as pipework and machinery, ducts and drainage channels need to be covered. Megapads are the optimum product for such areas.



Megapads are the heavy duty range of pedestals which are available in heights up to 1020mm. They are extremely tough and hard wearing with a weight tolerance of 1560kg per unit Normal Weight Tolerance (end of linear behaviour) with a Maximum Load of 2057kg. They are ideal for holding up truly massive and very heavy slabs.



The larger Megapads also have an extended height range of 105mm each. This means fewer different sizes to order when installing across a large area.

They create a large cavity between the deck surface and the underside of the slab, which helps to ventilate the area and prevent issues such as rising damp and water getting clogged beneath the slab. Slabs are also well away from drains, outlets and pipework.

They are also resilient to very high and very low temperatures. They have been used successfully in some of the coldest populated regions on earth.



ASSEMBLY (215MM AND HIGHER)

Megapads are made up of multiple sections, which lock together to form one, sturdy unit.



At 215mm and higher, Megapads are increased in height by adding a 100mm high EXTENSION TOWER.

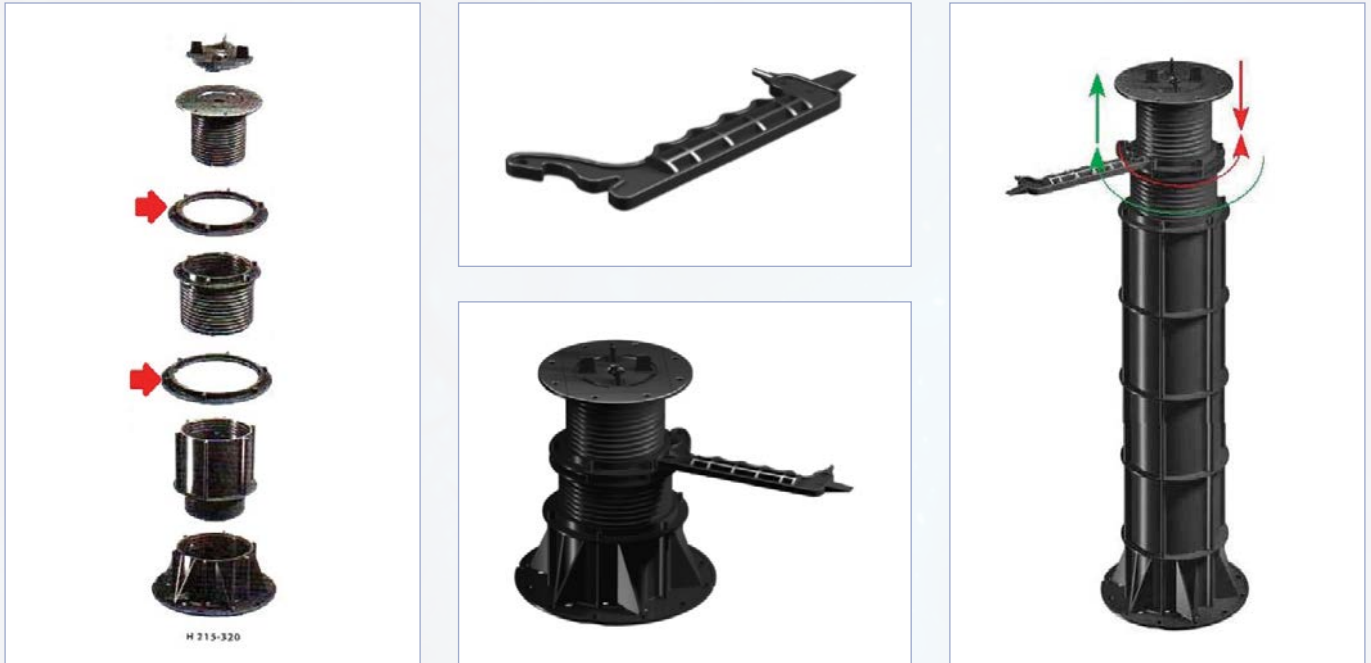
These towers click into the baseplate and to each other (if required) so multiple towers can be added to the Megapad, increasing the height up to a maximum of 1020mm.

When installing slabs, users should set out the Megapads at around the correct height, lay the slab down and then make final adjustments by hand. Their superior strength and flexibility mean that installers can adjust the height of the pedestal whilst the slab is in situ. This avoids having to repeatedly lift the slab to adjust the levels, a huge advantage when using very large or very heavy slabs.



LOCKING THE HEIGHT

At 35mm and above, Megapads are designed to be “locked” into place once the correct height has been achieved with the ingeniously designed double-locking- thread mechanism. The headpiece, the extension towers and baseplate connect together by screwing into each other in the usual manner (green arrows).



As the extension tower, adjustable thread section and headpiece are all screwed into place, a locking ring section (red arrows) is counter threaded at two points up to the headpiece and at the bottom of the stem, linking either to the baseplate or an extension collar.

A special “Easykey” tool is used to help act as a wrench to ensure the locking nut is tightly screwed into place. The grooves in the handle fit around bars moulded onto the locking ring to give extra leverage when tightening them.

Once these locking rings are secured in place, the pedestals cannot change in height or start to unwind. The “Easykey” is again used to release the locking ring. It is pressed into a small hole to release a spring within the unit, allowing the threads to be unlocked and untwisted, should installers wish to change the height at a later date.

PAVING UP TO THE EDGE – MEGAPADS ARE REVERSIBLE

At 115mm high and above, the unit can be inverted. When paving up to the edges, up to balustrades and railings, or around corners; the very edge of the slab needs to be properly supported to prevent that slab tipping if weight is placed onto the lip. The support pad can be turned upside down and the lug head unit placed into what was the base plate.



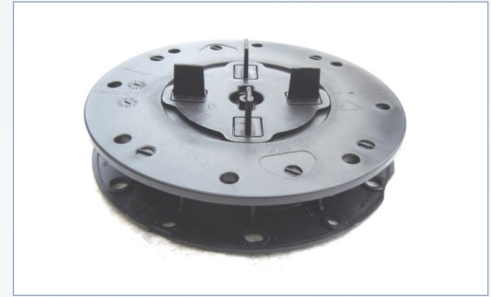
Since the base plate is 200mm in diameter, when turned upside down, the new headpiece is 200mm in diameter, wider than the new base plate. Therefore, the paving slab sits securely onto the wider headpiece and does not overhang the supporting columns. This means the slabs are fully supported and can be butted up against the wall without risk of tipping. Even at their maximum height these supports are stable and secure.

MINI MEGAPADS

Mini-Megapads allow installers to lay slabs onto decks with very minimal suspension off the deck, but still allow telescopic adjustment. Very minor changes to the height level can be achieved.

These smaller pads are available 10-20mm, 22-30mm and 28-37mm. They have a head and base diameter of 150mm. The weight tolerance is lower, however, at 683kg per unit Normal Weight Tolerance (end of linear behaviour) with a Maximum Load of 1171kg.

Please see section on Mini-Megapads for more details.



SHOCK ABSORBING SHIMS

For additional acoustic properties, or if more grip is needed, rubber shock absorbing shims can be installed onto the headpiece of Megapads.

The shim will hook over the positioning lugs so that it sits securely in place.

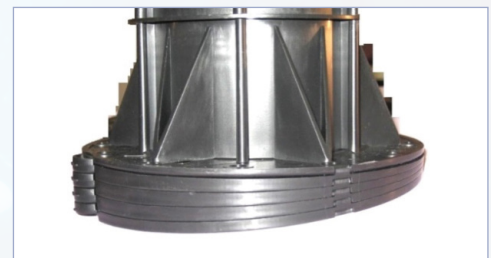
Please see the accessories section for more details.



SLOPE CORRECTORS

The base plates come with clip fixings to allow slope correctors to be fitted. These wedge shaped levellers help prevent tilting of the units when placed on the built-to-falls decks.

The Megapad remains completely vertical with its centre of gravity going directly through the middle of the unit. This keeps the slabs on top completely stable.



TECHNICAL DATA

MATERIAL	INJECTION MOULDED POLYPROPYLENE
NORMAL WEIGHT TOLERANCE	1560KG
MAX LOAD	2057KG
MAX TEMPERATURE	PLUS 75 °C
MIN TEMPERATURE	MINUS 40 °C
BASE PLATE DIAMETER	200MM
HEADPIECE DIAMETER	150MM
LUG HEIGHT	15MM
LUG WIDTH / THICKNESS	2MM, 4MM, 6MM, 8MM OR 10MM
CODE	DESCRIPTION / SIZE
SP-MEG-010 ①	MEGAPAD 10-20MM - SEE MINI MEGAPAD PAGE
SP-MEG-022 ①	MEGAPAD 22-30MM - SEE MINI MEGAPAD PAGE
SP-MEG-028 ①	MEGAPAD 28-37MM - SEE MINI MEGAPAD PAGE
SP-MEG-035	MEGAPAD 35-50MM
SP-MEG-050	MEGAPAD 50-75MM
SP-MEG-075	MEGAPAD 75-120MM
SP-MEG-115	MEGAPAD 115-220MM
SP-MEG-215	MEGAPAD 215-320MM
SP-MEG-315	MEGAPAD 315-420MM
SP-MEG-415-	MEGAPAD 415-520MM
SP-MEG-515	MEGAPAD 515-620MM
SP-MEG-615	MEGAPAD 615-720MM
SP-MEG-715	MEGAPAD 715-820MM
SP-MEG-815	MEGAPAD 815-920MM
SP-MEG-915	MEGAPAD 915-1020MM
① 683KG WEIGHT TOLERANCE, 150MM BASE - PLEASE SEE SECTION ON MINI BASES FOR FULL TECHNICAL DATA	

EDGING & CREATING STEPS

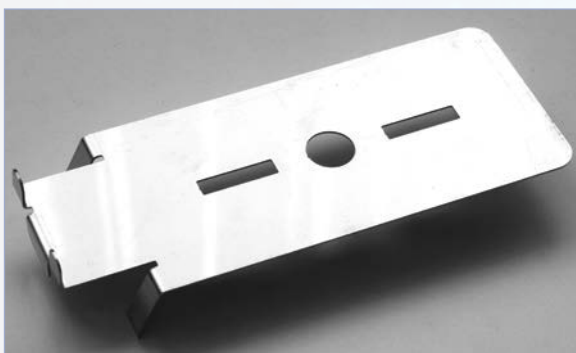
METAL PLATES FOR CREATING STEPS ON PAVING

Metal clips can be used as a useful tool for edges and step details for paving.

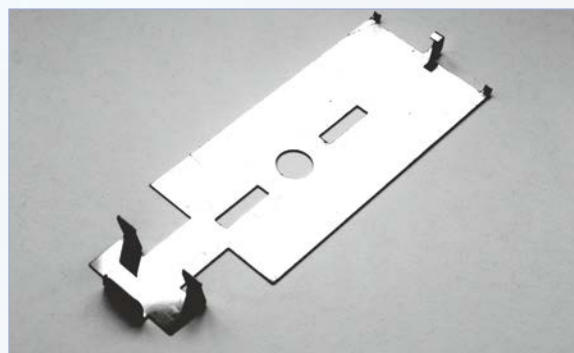
If users wish to install a vertical section of stone or porcelain, two clips are available to hold it in place on the vertical plane. These clips can be used with ASP and Megapad pedestals.



These clips hold a vertical board or tile in place in front of the pedestal, acting as a skirting / edging board. Areas where a step is created will expose the underside of suspended paving, including the black pedestal. These clips were developed to cover all the workings on the underside of the paving slabs and achieve a tidy finish.



METAL CLIP FOR ABOVE JOIST – CLIP A

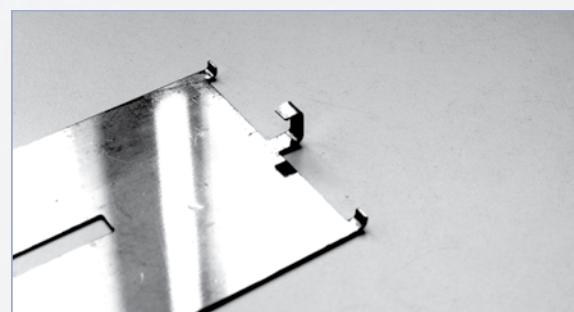


METAL CLIP FOR UNDER BASEPLATE – CLIP B

The baseplate of the pedestal needs to be cut back slightly to accommodate the spring-loaded fasteners at the front of the baseplate clip (CLIP B). At the back of this clip there are three grips which will hold the baseplate securely.

CLIP FOR BASEPLATE – CLIP B

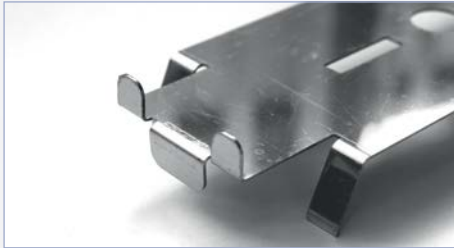
Clip B is fitted underneath the baseplate of the adjustable pedestal, which has been cut back slightly to the size of Clip B. This clip has small grips at each end which will hold the baseplate securely and a further set of bars which point upwards, ready to hold the vertical edging board / tile.



CLIP FOR HEADPIECE – CLIP A

The upper clip (clip A) rests on top of the headpiece of the adjustable pedestal and the weight of the paving slab or decking board on top holds it in place.

The clip is sandwiched between the headpiece of the pedestal and the slab / board, safely wedged and ballasted by the weight of the covering.



The vertical edge / skirting board is fitted in place and secured both top and bottom by the upwards and downwards pointing grips. The pedestal and joist beneath are covered and the finish is clean and tidy.

Using these metal clips is not a substitute for fitting a proper, structural termination section. These clips will hold fascia boards and vertical sections in place but the strength of these fixings is limited, so Wallbarn would recommend a structural section set into the slab to hold the decking in place if considerable traffic onto steps and termination details is anticipated.

FIXING PEDESTALS IF REQUIRED

If a moderate level of traffic on these step details is anticipated, to hold the pedestals more securely, a suggestion is to bond the pedestals, be that TD Supports or TD Megapads, more securely to the subdeck. This will hold the decking or paving stable and secure at this exposed edge and prevent the pedestals and decking moving over time.



The best option is to use TD Megapads which have holes around the circumference where a mechanical fixing and / or adhesive can be set through the holes to ensure the unit does not move over time.

Ask Wallbarn for more details of the new edging clips.

TIMBER DECKING

Many roof decks, terraces and walkways are constructed with a timber decking surface. Where the decking is built onto waterproofing, however, it is important that the timber does not come into direct contact with waterproofing membrane.

Wallbarn has developed a range of pads and pedestals to raise the timber decking off the roof deck. These pads and pedestals provide proper drainage, preventing the timber digging into the membrane; and keeping the wood out of standing water, helping to prevent rotting.



The supports are manufactured with a specially designed headpiece to hold timber joists. These are typically 60mm apart which will allow a 2 inch joist or batten to fit in between the pegs / lugs easily.



The supports are not drilled or bonded to the deck and the joists sit on them without being fixed. Once the battens are placed onto the headpieces, they are joined together to form a joist framework.

The battens / joists should be laid onto the supports no more than 600mm apart to avoid any risk of point loading of weight or the timber bouncing.

The decking boards are then fixed to the joist frame. It is designed to be loose fitted. This allows for movement.

The void between the decking and the roof ventilates the roof-deck and also means the void can be used to hide items such as water pipes, electrical wiring and drains.

5MM RUBBER PADS

Where users need the very minimum amount of height off the surface when installing timber decking systems, the plain fixed height 5mm rubber paving pad can be considered.



These ultra-thin paving pads give the minimum lift off the deck required for drainage. It is important to separate the timber from the membrane beneath to prevent damage.

The circular pad is manufactured from PVC into a 150mm diameter disc. The upper surface is flat. There is no adjustment in height possible using this product. The disc is used more as a separation and protection layer than a pedestal.

TECHNICAL DATA

5MM THICK RUBBER SUPPORT DISC	
CODE	SP-RUB-005
MATERIAL	PVC
THICKNESS / HEIGHT OFF SURFACE	5MM
WEIGHT TOLERANCE / BEARING CAPACITY	8,000KG
OUTER DIAMETER	150MM
APPEARANCE	FLAT DISC BOTH SIDES

6MM RUBBER PADS FOR DECKING

An alternative to the 5mm disc is the 6mm pad for decking, with the integrated joist holder. The decking headpiece is placed onto the flat rubber disc to create a 6mm high decking pad. This is ideal for areas where the surface beneath needs to be protected and the timber joists need to be lifted off the deck to allow rainwater to escape.



TD PLUS HEADPIECE FOR 6MM RUBBER PAD

The alternative headpiece – the TD Plus – can also be used here. Installers can screw the timber joists in place through the side bars if they wish to more fully secure the framework.



TECHNICAL DATA

CODE	SP-RUB-006-DECKING	SP-RUB-006-DECKING TD PLUS
MATERIAL	PVC	
THICKNESS / HEIGHT OFF SURFACE	6MM	
DISTANCE BETWEEN LUGS	60MM	
FIXING POINTS ON LUGS		2
LUG HEIGHT	15MM	30MM
WEIGHT TOLERANCE / BEARING CAPACITY	8,000KG	
OUTER DIAMETER	150MM	
APPEARANCE	FLAT DISC BOTH SIDES	

7MM RUBBER PADS FOR DECKING

The next height of timber decking supports is the fixed height 7mm rubber decking pad. Imperial measurements are also included on the rubber discs. The disc is approximately ¼ inch thick. The exact measurement is 0.276 “.

These discs have been specially designed to improve drainage even at these very low heights.



These circular pads are manufactured from PVC into 150mm diameter discs. The upper surface is moulded into a series of circular ridges and grooves which encourages the rainwater to run off the surface of the pad. Water will not be held on the surface of the disc, which means there is less risk of standing water affecting the timber joists in the long term.



There is no mechanical fixing required, the weight and stability of the frame will hold everything secure and in place.

The rubber compound means these pads have a soft, flexible, hard-wearing profile; helping to protect the membrane beneath from damage. Rubber will also offer acoustic properties and create a separation layer from the deck. They are extremely tough and durable and will also not become brittle in cold weather.

These pads are ideal for refurbishment projects, where an existing surface or system is overlaid.

TECHNICAL DATA

CODE	SP-RUB-007-DECKING
MATERIAL	PVC
THICKNESS / HEIGHT OFF SURFACE	7MM
DISTANCE BETWEEN LUGS	60MM
LUG HEIGHT	15MM
WEIGHT TOLERANCE / BEARING CAPACITY	8,000KG
OUTER DIAMETER	150MM
NUMBER OF DRAINAGE HOLES	6

TD PLUS HEADPIECE FOR 7MM PVC PAD

The alternative TD Plus headpiece is also used for the 7mm rubber disc. Installers can screw the timber joists in place through the side bars if they wish to more fully secure the framework.



TECHNICAL DATA

CODE	SP-RUB-007-DECKING TD PLUS
MATERIAL	PVC
THICKNESS / HEIGHT OFF SURFACE	7MM
FIXING POINTS ON LUGS	2
LUG HEIGHT	30MM
WEIGHT TOLERANCE / BEARING CAPACITY	8,000KG
OUTER DIAMETER	150MM
NUMBER OF DRAINAGE HOLES	6



TD MINI MEGAPADS

Brand new for 2017, is an ultra-low but fully adjustable pedestal for timber decking. Installers had been asking for a further adjustment range on areas with very tight height thresholds, and given the popularity of the existing TD Mini Megapads, we set out to design a unit which went even lower.



This TD Mini Megapad is a completely new design of pedestal, able to reach as low as 10mm in height and still be adjustable by hand. The large grips on the outside of the unit allow fingers to twist the stem to adjust the height by up to 5mm.

Additionally, we have designed a 5mm extension plate for use with these Mini-Megapads to increase the height range. Whilst a complete Mini-Megapad unit will contain a single extension plate an additional extension plate can be purchased separately and added if required.



This way, contractors can have millimetre exact adjustment from 10mm to 20mm using these units, and if they need to go higher they can move onto the next height of Mini TD Megapads which start at 22mm.

Should installers wish to arrest the fall or tilt of the pedestals, Wallbarn recommends using the rubber wedge 3-8mm shims placed under the bases.

TECHNICAL DATA

CODE	SP-MEG-010	SP-PLA-005-SHIM
HEIGHT	10-20MM	5MM
MATERIAL	INJECTION MOULDED POLYPROPYLENE	
NORMAL WEIGHT TOLERANCE	683KG	
MAX LOAD	1171KG	
DISTANCE BETWEEN LUGS	60MM	
LUG HEIGHT	15MM	
DIAMETER OF HEAD	150MM	
DIAMETER OF BASE	150MM	

TD MINI MEGAPADS

The next fully adjustable timber decking pedestals are the TD Mini Megapads 22-30mm and 28-37mm which give further height ranges to support timber joists at very low thresholds.



Made from injection moulded polypropylene (PP), these support pads are extremely tough and strong. They can tolerate 683kg per unit Normal Weight Tolerance (end of linear behaviour) with a Maximum Load of 1171kg, and can withstand vast temperature changes – from plus 75°C to minus 40°C – without cracking or losing their bearing capacity.

The headpiece and baseplate are 150mm in diameter and the head has a joist holder which clips into the centre of the unit. The housing lugs are placed 60mm apart, so a timber joist can be placed on the headpiece between the lugs and be held securely.

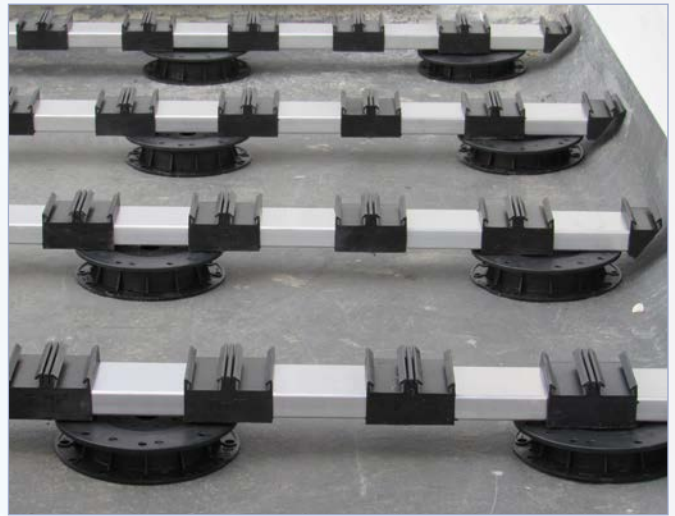


Using TD Mini Megapads means that installers do not need to spend time and effort placing shims under fixed height pads. The units can be twisted with the joists in place to alter the height. That way, the timber joist frame, which is constructed to hold the deck boards in place and provide a solid structure, is completely flat and level.

The decking will therefore be completely flat, giving a much higher quality appearance.

Mini Megapads can be used without their housing lugs as flat headed units to support oversized joists, such as the EasyClick system of decking available exclusively from Wallbarn.

EasyClick is the innovative new decking product made up of aluminium battens which have been fitted with pre-measured clips which click into the grooves moulded into the specially designed deck boards. No screws, fixings or softwood joists are required. This is the fastest and easiest way to fit timber and composite decking systems.



There is a dedicated website for iDecking EasyClick and a separate brochure. Please ask Wallbarn for more details.

TECHNICAL DATA

CODE	SP-TD-MEG-022	SP-TD-MEG-028
HEIGHT	22-30MM	28-37MM
MATERIAL	INJECTION MOULDED POLYPROPYLENE	
WIDTH BETWEEN LUGS	60MM	
LUG HEIGHT	15MM	
DIAMETER OF HEAD	150MM	
DIAMETER OF BASE	150MM	
NORMAL WEIGHT TOLERANCE	683KG	
MAX LOAD	1171KG	
MAXIMUM TEMPERATURE	PLUS 75°C	
MINIMUM TEMPERATURE	MINUS 40°C	

ADJUSTING THE MINI MEGAPAD

Because the amount of adjustable thread is so small – only 8mm in the case of the SP-TD-MEG-022 – it is sometimes difficult for applicators to get their fingers into the space to alter the height.

Wallbarn has an “Easykey” tool which can be used as a wrench. One end of the key is placed around the vertical bars on the stem section and the key can then be used as a wrench to turn the stem and adjust the height of the Mini Megapad.

SLOPE CORRECTORS

Slope correctors (found on page 59) can be used with TD Megapads. Although the slope correctors have a larger diameter than the Mini Megapads, there are a series of ridges moulded into the slope corrector on the inner rim.

These ridges click onto grooves on the baseplate of the Mini Megapad, aligning them securely into place. This means the Mini Megapad will be vertical and completely stable.



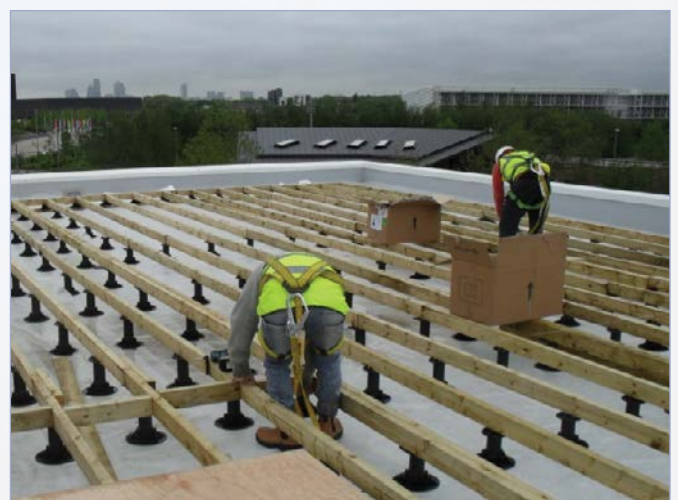
TD SUPPORT PADS FOR DECKING

Timber decking is constructed on a considerable amount of roofs, terraces and walkways. Timber decking can provide beautiful, natural looking spaces in urban areas and complement soft landscaping very well. The waterproofing of these roofs and terraces are very important. Care must be taken to protect these often delicate membranes as warranties are often at stake. Simply laying timber directly onto the membrane runs too much risk of damage.



Wallbarn's TD range was developed to provide a solution to this problem. The strong polypropylene pads lift the decking off the roof deck. This offers the following advantages: allowing proper drainage of the decking surface therefore reducing slip hazards, preventing the timber digging into the membrane beneath, keeping the wood out of standing water.

These adjustable supports have a specially designed headpiece with pegs positioned in the corners, either 40mm or 60mm apart. This means a 2 inch joist or batten can fit in between the pegs / lugs easily and there is a little extra room in case the timber joist is not completely straight and to allow movement.



Installation using this system is simple – the pads are loose laid onto the deck; the telescopic stems are adjusted to ensure the upper surface is level; a joist framework is constructed on top of the supports (cross battens are screwed into place to give a framework which is sturdy and weight bearing) and the top layer of decking boards are fixed to the joist frame.

Wallbarn recommends that the TD Support Pads are sited no more than 600mm apart.

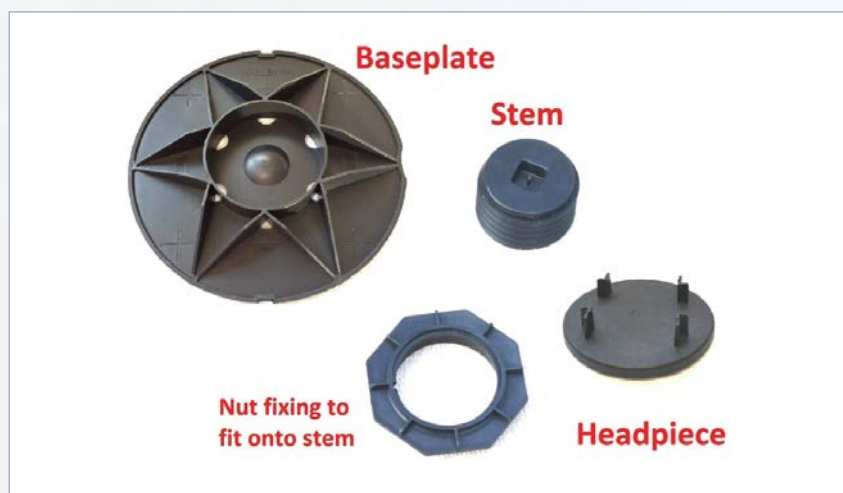
There is no risk of them moving off the head piece and no bonding or fixings onto the support itself are required. There is no need to mechanically fix the supports into the membrane; this is a completely free standing system.

The battens / joists are suspended off the deck, meaning none of the wood is exposed to standing water, which can rot the timber. Also, the joists are not lying directly on the waterproofing membrane, which can often damage the membrane. The weight of the whole timber deck is distributed through the wide baseplates. This prevents digging into the surface beneath and helps to make the whole decking structure more stable.



ASSEMBLY

Assembly of the TD range is the same as with the ASP range. The large baseplate holds the stem and nut fixing in the central collar. The headpiece slots into the square indent pressed into the stem (the height of the pedestal is shown on the inside of the indent) and the whole unit is created.



The baseplate is manufactured with diagonal arms spreading out across the face of it. This ensures that the weight is spread to the maximum possible area and does not concentrate on the core.

Installers use their fingers to twist the nut fixing on the stem up and down to adjust the height. There is no need to constantly remove and replace the timber joist. The joists rest on top of the headpiece between the housing lugs / pegs located on the edge.



There are a series of "Trim" marks on the base plate (see page 17 for more details) should installers wish to trim them back around corners of details. This is less of an issue than for paving, however, as the timber joist can easily overhang the headpiece.

Installers can adjust the height of the pedestals whilst the timber joists are in place on the headpieces. The best method is to suspend the joist at each end onto the pedestals, check the level is correct with a laser or spirit level and then add extra pedestals across the length of the joist to give sufficient support (no more than 600mm apart). This is a fast and easy process.

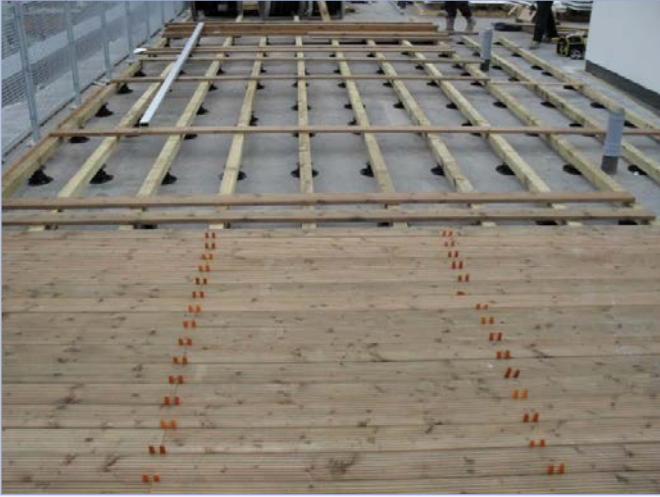


The void between the decking and the roof can be used to hide items such as water pipes, electrical wiring and drainage outlets. Drainage is uninterrupted, a major advantage.



Wallbarn TD pedestals are suitable for treated softwood, tropical hardwood and composite decking systems. Our products are the pedestal of choice for a number of high-end, patented decking systems in the UK and worldwide.





Pressure treated softwood – social housing project refurbishment – roof terrace



Yellow Balau tropical hardwood fixed to treated softwood joists – office development, City of London



Composite decking fixed to 6 x 2" joists – office refurbishment project, London

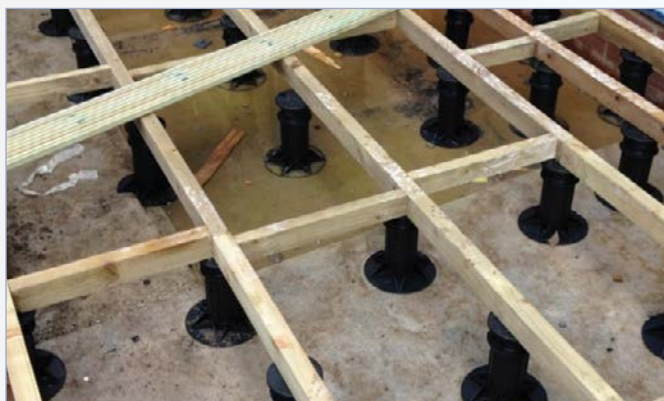


TECHNICAL DATA

MATERIAL	INJECTION MOULDED POLYPROPYLENE
NORMAL WEIGHT TOLERANCE	683KG
MAX LOAD	1171KG
MAX TEMPERATURE	PLUS 75 °C
MIN TEMPERATURE	MINUS 40 °C
BASE PLATE DIAMETER	200MM OR 150MM ❶
HEADPIECE DIAMETER	120MM
WIDTH BETWEEN LUGS	60MM OR 40MM
LUG HEIGHT	18MM
CODE	DESCRIPTION / SIZE
SP-TD-025-FIXED	TD 25MM FIXED HEIGHT TIMBER DECKING PAD
SP-TD-035-FIXED	TD 35MM FIXED HEIGHT TIMBER DECKING PAD
SP-TD-035	35-50MM TD TIMBER DECKING PAD
SP-TD-050	50-70MM TD TIMBER DECKING PAD
SP-TD-065	65-100MM TD TIMBER DECKING PAD
SP-TD-095	95-130MM TD TIMBER DECKING PAD
SP-TD-125	125-160MM TD TIMBER DECKING PAD
SP-TD-155	155-190MM TD TIMBER DECKING PAD
SP-TD-185	185-220MM TD TIMBER DECKING PAD
SP-TD-210	210-245MM TD TIMBER DECKING PAD
SP-TD-240	240-275MM TD TIMBER DECKING PAD
SP-TD-270	270-305MM TD TIMBER DECKING PAD
SP-TD-300	300-335MM TD TIMBER DECKING PAD
SP-TD-330	330-365MM TD TIMBER DECKING PAD
❶ PLEASE SEE SECTION ON MINI BASES	

TD EXTRA SUPPORT PADS FOR DECKING

As with the ASP EXTRA pedestals for paving, Wallbarn has developed support pads with a much larger height range for timber decking also. Therefore, when installing decking, users can adjust from 85mm up to 380mm in only three different sized units.



TECHNICAL DATA

MATERIAL	INJECTION MOULDED POLYPROPYLENE
NORMAL WEIGHT TOLERANCE	683KG
MAX LOAD	1171KG
MAX TEMPERATURE	PLUS 75 °C
MIN TEMPERATURE	MINUS 40 °C
BASE PLATE DIAMETER	200MM OR 150MM ❶
HEADPIECE DIAMETER	120MM
WIDTH BETWEEN LUGS	60MM OR 40MM
LUG HEIGHT	18MM
CODE	DESCRIPTION
SP-TD-EXTRA-085-Z	85-135MM EXTRA TD TIMBER DECKING PAD
SP-TD-EXTRA-125-Z	125-215MM EXTRA TD TIMBER DECKING PAD
SP-TD-EXTRA-210-Z	210-380MM EXTRA TD TIMBER DECKING PAD
❶ PLEASE SEE SECTION ON MINI BASES	

90MM WIDE TD HEADPIECES

A special headpiece is available with housing lugs placed 90mm apart. These units may be required where a larger timber joist is being laid onto the pedestal.



Having a larger timber joist means that the whole decking system is stronger and more stable, and potentially more weight can be loaded onto it.

However, care must be taken to ensure that the additional weight of the joist structure or whatever is placed onto the decking does not overload the whole system. Although the pedestals will tolerate 683kg per unit Normal Weight Tolerance (end of linear behaviour) with a Maximum Load of 1171kg, Wallbarn always recommends that pedestals are placed no more than 600mm apart when constructing timber decking areas.

TECHNICAL DATA

MATERIAL	INJECTION MOULDED POLYPROPYLENE
NORMAL WEIGHT TOLERANCE	683KG
MAX LOAD	1171KG
MAX TEMPERATURE	PLUS 75 °C
MIN TEMPERATURE	MINUS 40 °C
BASE PLATE DIAMETER	200MM OR 150MM ❶
HEADPIECE DIAMETER	120MM
WIDTH BETWEEN LUGS	90MM
LUG HEIGHT	15MM
CODE	DESCRIPTION
SP-TD-025-FIXED	TD 25MM FIXED HEIGHT TIMBER DECKING PAD WITH 90MM LUGS
SP-TD-035-FIXED	TD 35MM FIXED HEIGHT TIMBER DECKING PAD WITH 90MM LUGS
SP-TD-035	35-50MM TD TIMBER DECKING PAD WITH 90MM LUGS
SP-TD-050	50-70MM TD TIMBER DECKING PAD WITH 90MM LUGS
SP-TD-065	65-100MM TD TIMBER DECKING PAD WITH 90MM LUGS
SP-TD-095	95-130MM TD TIMBER DECKING PAD WITH 90MM LUGS
SP-TD-125	125-160MM TD TIMBER DECKING PAD WITH 90MM LUGS
SP-TD-155	155-190MM TD TIMBER DECKING PAD WITH 90MM LUGS
SP-TD-185	185-220MM TD TIMBER DECKING PAD WITH 90MM LUGS
SP-TD-210	210-245MM TD TIMBER DECKING PAD WITH 90MM LUGS
SP-TD-240	240-275MM TD TIMBER DECKING PAD WITH 90MM LUGS
SP-TD-270	270-305MM TD TIMBER DECKING PAD WITH 90MM LUGS
SP-TD-300	300-335MM TD TIMBER DECKING PAD WITH 90MM LUGS
SP-TD-330	330-365MM TD TIMBER DECKING PAD WITH 90MM LUGS
SP-TD-EXTRA-085	85-135MM EXTRA TD TIMBER DECKING PAD WITH 90MM LUGS
SP-TD-EXTRA-125	125-215MM EXTRA TD TIMBER DECKING PAD WITH 90MM LUGS
SP-TD-EXTRA-210	210-380MM EXTRA TD TIMBER DECKING PAD WITH 90MM LUGS
❶ PLEASE SEE SECTION ON MINI BASES	

TD PLUS SUPPORT PADS FOR DECKING

A new headpiece for timber decking has been developed, the TD PLUS headpiece. This flat headpiece is square in shape, and has a side bar to one side only. This means larger timber joists can be laid onto the head and details such as junctions between right-angled joists can be adequately supported.



There are two fixing points on the side bar which allow wood screws to be fitted into the timber joist, giving extra stability where required.

TECHNICAL DATA

MATERIAL	INJECTION MOULDED POLYPROPYLENE
NORMAL WEIGHT TOLERANCE	683KG
MAX LOAD	1171KG
MAX TEMPERATURE	PLUS 75 °C
MIN TEMPERATURE	MINUS 40 °C
BASE PLATE DIAMETER	200MM
HEADPIECE DIMENSION	120 X 90MM
SIDE BAR HEIGHT	30MM
CONNECTING POINTS	2
CODE	DESCRIPTION
SP-TD PLUS-025-FIXED	TD PLUS 25MM FIXED PAD
SP-TD PLUS-035-FIXED	TD PLUS 35MM FIXED PAD
SP-TD PLUS-035	35-50MM TD PLUS TIMBER DECKING PAD
SP-TD PLUS-050	50-70MM TD PLUS TIMBER DECKING PAD
SP-TD PLUS-065	65-100MM TD PLUS TIMBER DECKING PAD
SP-TD PLUS-095	95-130MM TD PLUS TIMBER DECKING PAD
SP-TD PLUS-125	125-160MM TD PLUS TIMBER DECKING PAD
SP-TD PLUS-155	155-190MM TD PLUS TIMBER DECKING PAD
SP-TD PLUS-185	185-220MM TD PLUS TIMBER DECKING PAD
SP-TD PLUS-210	210-245MM TD PLUS TIMBER DECKING PAD
SP-TD PLUS-240	240-275MM TD PLUS TIMBER DECKING PAD
SP-TD PLUS-270	270-305MM TD PLUS TIMBER DECKING PAD
SP-TD PLUS-300	300-335MM TD PLUS TIMBER DECKING PAD
SP-TD PLUS-330	330-365MM TD PLUS TIMBER DECKING PAD
SP-TD PLUS-EXTRA-085	85-135MM EXTRA TD PLUS TIMBER DECKING PAD
SP-TD PLUS-EXTRA-125	125-215MM EXTRA TD PLUS TIMBER DECKING PAD
SP-TD PLUS-EXTRA-210	210-380MM EXTRA TD PLUS TIMBER DECKING PAD

TD MOBILE PEDESTALS

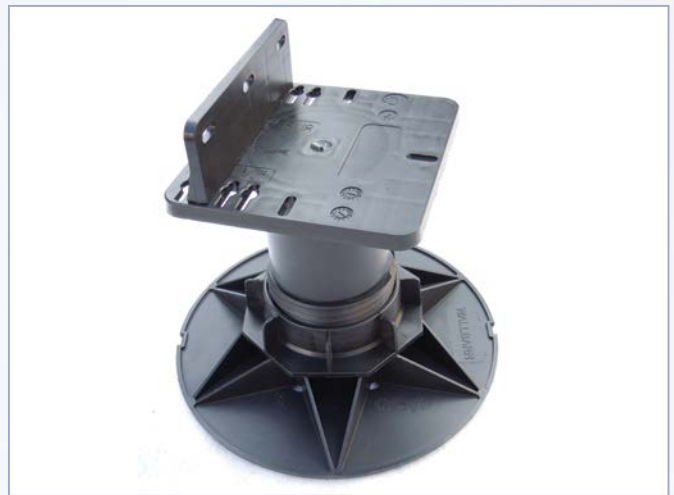
This movable headpiece is available for decking, which can be adjusted in width so that different sized timber battens and joists can be fitted onto the pads without the risk of the weight being lopsided.

The headpiece comprises of a flat, square shaped plate and a side bar which can be moved to a number of different widths.

The face of the headpiece has clearly defined measurements ranging from 30mm to 90mm, so the side bar can be moved to match the exact width of the timber joist. This ensures that the weight of the timber joist is directed down through the central stem, eliminating the risk of the weight pulling the system off balance and spreading the weight evenly through the base plate.

The side bar clicks into holes situated along the face of the headpiece. These holes are situated so that a 30mm, 50mm, 70mm and 90mm timber joist will sit across the centre of the headpiece, directly on top of the central stem.

The side bar has three holes to allow wood screws to fix the batten / joist to the pedestal, creating a more secure structure.



TECHNICAL DATA

MATERIAL	INJECTION MOULDED POLYPROPYLENE
NORMAL WEIGHT TOLERANCE	683KG
MAX LOAD	1171KG
MAX TEMPERATURE	PLUS 75 °C
MIN TEMPERATURE	MINUS 40 °C
BASE PLATE DIAMETER	200MM
HEADPIECE DIAMETER	120MM X 120MM
SIDE BAR	30MM
CONNECTING POINTS	3
WIDTH OPTIONS	30MM, 50MM, 70MM, 90MM
CODE	DESCRIPTION
SP-TD MOBILE-025-FIXED	TD MOBILE 25MM FIXED PAD
SP-TD MOBILE-035-FIXED	TD MOBILE 35MM FIXED PAD
SP-TD MOBILE-035	35-50MM TD MOBILE TIMBER DECKING PAD
SP-TD MOBILE-050	50-70MM TD MOBILE TIMBER DECKING PAD
SP-TD MOBILE-065	65-100MM TD MOBILE TIMBER DECKING PAD
SP-TD MOBILE-095	95-130MM TD MOBILE TIMBER DECKING PAD
SP-TD MOBILE-125	125-160MM TD MOBILE TIMBER DECKING PAD
SP-TD MOBILE-155	155-190MM TD MOBILE TIMBER DECKING PAD
SP-TD MOBILE-185	185-220MM TD MOBILE TIMBER DECKING PAD
SP-TD MOBILE-210	210-245MM TD MOBILE TIMBER DECKING PAD
SP-TD MOBILE-240	240-275MM TD MOBILE TIMBER DECKING PAD
SP-TD MOBILE-270	270-305MM TD MOBILE TIMBER DECKING PAD
SP-TD MOBILE-300	300-335MM TD MOBILE TIMBER DECKING PAD
SP-TD MOBILE-330	330-365MM TD MOBILE TIMBER DECKING PAD
SP-TD MOBILE-EXTRA-085	85-135MM EXTRA TD MOBILE TIMBER DECKING PAD
SP-TD MOBILE-EXTRA-125	125-215MM EXTRA TD MOBILE TIMBER DECKING PAD
SP-TD MOBILE-EXTRA-210	210-380MM EXTRA TD MOBILE TIMBER DECKING PAD

TD MEGAPADS

Megapads are available specifically designed for timber decking. TD Megapads have a headpiece with lugs positioned 60mm apart, to house a 2 inch timber joist.



TD Megapads can withstand a load of 1560kg per unit, Normal Weight Tolerance (end of linear behaviour) with a Maximum Load of 2057kg, meaning fewer units are required per square metre. Also, because each unit has a much larger range of adjustment (105mm for the larger sizes), fewer different sizes are required, making estimating an easier task.

The higher weight tolerance means more weight can be placed onto the timber decking. Items such as planters and Jacuzzis can be included, subject to the strength of the actual timber or composite material being sufficient, of course.

As with the paving Megapads, the TD Megapads have a series of telescopic threads laid out on the stems. The units wind up and down on the threads to gain the correct height and the height can be fixed securely with locking rings, which are counter-screwed into place. These rings lock the unit at the height selected. The Megapads will not move on the thread over time, meaning the height of the decking is fixed permanently and there is no risk of rocking.





As the TD Megapads are a more substantial unit, they are sturdy and stable even when fixed to very high levels. The units can be adjusted to a maximum height of 1020mm.

Larger cavities beneath the decking are often sought to give adequate clearance from sections on the sub-deck, such as drainage outlets and pipework. Steps and large changes in the height of the sub-deck can be overlaid easily due to the large height range of the TD Megapads and drainage and water flow is uninterrupted. This improves the ventilation of the system.



ASSEMBLY (215MM AND HIGHER)

TD Megapads are made up of multiple sections, which lock together to form one, sturdy unit.



At 215mm and higher, TD Megapads are increased in height by adding a 100mm high EXTENSION TOWER.

These towers click into the baseplate and to each other (if required) so multiple towers can be added to the TD Megapad, increasing the height up to a maximum of 1020mm.

A special key is required to unlock the towers once in place. The key can also be used as a wrench to help adjust the height in areas of restricted access.





TECHNICAL DATA

MATERIAL	INJECTION MOULDED POLYPROPYLENE
NORMAL WEIGHT TOLERANCE	1560KG
MAX LOAD	2057KG
MAX TEMPERATURE	PLUS 75 ° C
MIN TEMPERATURE	MINUS 40 ° C
BASE PLATE DIAMETER	200MM
HEADPIECE DIAMETER	150MM
LUG HEIGHT	15MM
DISTANCE BETWEEN LUGS	60MM
CODE	DESCRIPTION
SP-TD-MEG-010 ①	TD MEGAPAD 10-20MM - SEE MINI MEGAPAD PAGE
SP-TD-MEG-022 ①	TD MEGAPAD 22-30MM - SEE MINI TD MEGAPAD PAGE
SP-TD-MEG-028 ①	TD MEGAPAD 28-37MM - SEE MINI TD MEGAPAD PAGE
SP-TD-MEG-035	TD MEGAPAD 35-50MM
SP-TD-MEG-050	TD MEGAPAD 50-75MM
SP-TD-MEG-075	TD MEGAPAD 75-120MM
SP-TD-MEG-115	TD MEGAPAD 115-220MM
SP-TD-MEG-215	TD MEGAPAD 215-320MM
SP-TD-MEG-315	TD MEGAPAD 315-420MM
SP-TD-MEG-415	TD MEGAPAD 415-520MM
SP-TD-MEG-515	TD MEGAPAD 515-620MM
SP-TD-MEG-615	TD MEGAPAD 615-720MM
SP-TD-MEG-715	TD MEGAPAD 715-820MM
SP-TD-MEG-815	TD MEGAPAD 815-920MM
SP-TD-MEG-915	TD MEGAPAD 915-1020MM
① 683KG WEIGHT TOLERANCE, 150MM BASE - PLEASE SEE MINI MEGAPADS PAGE 30 FOR FULL TECHNICAL DATA	

FLAT HEADED TD MEGAPADS

If contractors are using very large timber battens, or if timber tiles or plates are being installed; then Flat Headed Megapads can be used. There is no lugged fixing on the head, just a 150mm diameter, completely flat headpiece.



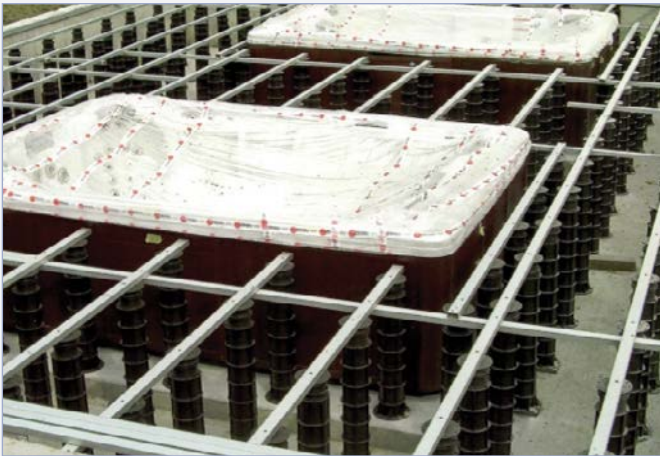
This gives installers another design option and greater flexibility.

Because Megapads tolerate a greater amount of weight – 1560kg per unit Normal Weight Tolerance (end of linear behaviour) with a Maximum Load of 2057kg – a very high load-bearing layer can be constructed. There is more height range available with Megapads, and they often provide a solution for certain complicated areas.



TD Megapads can be set to extremely accurate levels and locked, so the levels are maintained over the long-term. This means decking can be constructed flush up to the door threshold. This creates the seamless “indoors to outdoors” flooring surface which often features in decking areas.

Flat Headed Megapads are also useful for the junction point between timber joists or even other structures completely, such as drainpipes.



They can be used at much larger height, right up to 1020mm, and have been fully tested to tolerate 1560kg per unit Normal Weight Tolerance (end of linear behaviour) with a Maximum Load of 2057kg and remain fully stable. Installations, such as the Jacuzzi pictured above, offer contractors considerable scope to construct a wide variety of schemes.

TECHNICAL DATA

MATERIAL	INJECTION MOULDED POLYPROPYLENE
NORMAL WEIGHT TOLERANCE	1560KG
MAX LOAD	2057KG
MAX TEMPERATURE	PLUS 75 ° C
MIN TEMPERATURE	MINUS 40 ° C
BASE PLATE DIAMETER	200MM
HEADPIECE DIAMETER	150MM
CODE	DESCRIPTION
SP-TD-MEG-STEM-010 ①	FLAT HEADED MEGAPAD 10-20MM - SEE MINI FLAT HEADED MEGAPAD PAGE
SP-TD-MEG-STEM-022 ①	FLAT HEADED MEGAPAD 22-30MM - SEE MINI FLAT HEADED MEGAPAD PAGE
SP-TD-MEG-STEM-028 ①	FLAT HEADED MEGAPAD 28-37MM - SEE MINI FLAT HEADED MEGAPAD PAGE
SP-TD-MEG-STEM-035	FLAT HEADED MEGAPAD 35-50MM
SP-TD-MEG-STEM-050	FLAT HEADED MEGAPAD 50-75MM
SP-TD-MEG-STEM-075	FLAT HEADED MEGAPAD 75-120MM
SP-TD-MEG-STEM-115	FLAT HEADED MEGAPAD 115-220MM
SP-TD-MEG-STEM-215	FLAT HEADED MEGAPAD 215-320MM
SP-TD-MEG-STEM-315	FLAT HEADED MEGAPAD 315-420MM
SP-TD-MEG-STEM-415	FLAT HEADED MEGAPAD 415-520MM
SP-TD-MEG-STEM-515	FLAT HEADED MEGAPAD 515-620MM
SP-TD-STEM-615	FLAT HEADED MEGAPAD 615-720MM
SP-TD-STEM-715	FLAT HEADED MEGAPAD 715-820MM
SP-TD-STEM-815	FLAT HEADED MEGAPAD 815-920MM
SP-TD-STEM-915	FLAT HEADED MEGAPAD 915-1020MM
① 683KG WEIGHT TOLERANCE, 150MM BASE - PLEASE SEE MINI MEGAPADS PAGE 30 FOR FULL TECHNICAL DATA	

TD PLUS MEGAPAD

A new style of headpiece is available for the TD Megapad, where installers wish to fix the timber joist to the pad unit. This may be desired if users wish to ensure there is no movement of the timber, or perhaps if a much larger joist is placed onto the pad.



The TD PLUS Megapad is priced at the same level (at the equivalent height), and contains the same technical strength properties, of the TD Megapad.

TECHNICAL DATA

MATERIAL	INJECTION MOULDED POLYPROPYLENE
NORMAL WEIGHT TOLERANCE	1560KG
MAX LOAD	2057KG
MAX TEMPERATURE	PLUS 75 °C
MIN TEMPERATURE	MINUS 40 °C
BASE PLATE DIAMETER	200MM
HEADPIECE DIAMETER	150MM
LUG HEIGHT	30MM
FIXING POINTS	2
CODE	DESCRIPTION / SIZE
CODE	DESCRIPTION / SIZE
SP-TDPLUS-MEG-010 ①	TD PLUS MEGAPAD 10-20MM - SEE MINI MEGAPAD PAGE
SP-TDPLUS-MEG-022 ①	TD PLUS MEGAPAD 22-30MM - SEE MINI MEGAPAD PAGE
SP-TDPLUS-MEG-028 ①	TD PLUS MEGAPAD 28-37MM - SEE MINI MEGAPAD PAGE
SP-TDPLUS-MEG-035	TD PLUS MEGAPAD 35-50MM
SP-TDPLUS-MEG-050	TD PLUS MEGAPAD 50-75MM
SP-TDPLUS-MEG-075	TD PLUS MEGAPAD 75-120MM
SP-TDPLUS-MEG-115	TD PLUS MEGAPAD 115-220MM
SP-TDPLUS-MEG-215	TD PLUS MEGAPAD 215-320MM
SP-TDPLUS-MEG-315	TD PLUS MEGAPAD 315-420MM
SP-TDPLUS-MEG-415-	TD PLUS MEGAPAD 415-520MM
SP-TDPLUS-MEG-515	TD PLUS MEGAPAD 515-620MM
SP-TDPLUS-MEG-615	TD PLUS MEGAPAD 615-720MM
SP-TDPLUS-MEG-715	TD PLUS MEGAPAD 715-820MM
SP-TDPLUS-MEG-815	TD PLUS MEGAPAD 815-920MM
SP-TDPLUS-MEG-915	TD PLUS MEGAPAD 915-1020MM
① 683KG WEIGHT TOLERANCE, 150MM BASE - PLEASE SEE MINI TD MEGAPADS PAGE 30 FOR FULL TECHNICAL DATA	

SHOCK ABSORBING SHIMS

Timber decked areas can often become noisy to walk across, especially if the deck is above residential dwellings. The Wallbarn rubber acoustic shim can also be used with TD pedestals to help insulate sound and vibration.

The shim is designed to fit both ASP and TD pedestals, and will hook over the positioning lugs (which are spaced out 60mm and 40mm apart on the headpiece) and sits securely in place.

The timber joist will sit on the rubber shim, giving extra grip and helping to deaden the sound and vibration.



TECHNICAL DATA

2.5MM SHOCK ABSORBING SHIM	
CODE	SP-RUB-0025
MATERIAL	PVC
THICKNESS / HEIGHT OFF SURFACE	2.5MM
WEIGHT TOLERANCE / BEARING CAPACITY	8,000KG
OUTER DIAMETER	150MM

FLAT HEADED ADJUSTABLE SUPPORTS

Where installers are laying extremely large timber joists, or for areas where a junction of joists occurs, flat headed adjustable pedestals can be used for decking. These units come in the same heights as the TD Supports.



The diameter of the headpiece is 120mm, so a wider joist can sit onto it easily. Provided that the joists are cross fixed regularly, the frame created will become strong, sturdy and secure.

They can prove a useful addition to decking systems and many designers prefer using these flat headed units to other varieties. They are priced at the same rate as TD supports at the corresponding height.



Flat headed support pads have also been used successfully to hold up modular timber buildings, site buildings, sheds and portakabins. Plate materials, such as large plywood bases, even metal grates and gangway structures can be placed onto these adjustable height support pads to make them level.

It is often far better to crane large, heavy temporary buildings onto these supports, where the level has been pre-set to be flat, than to have personnel underneath trying to adjust those levels whilst the structure is being suspended.

These units hold a weight of 683kg per unit Normal Weight Tolerance (end of linear behaviour) with a Maximum Load of 1171kg, so a calculation of how many units are required to hold the structure must be made beforehand.



Flat Headed Pedestals can be used with larger timber joists or the aluminium rails available as part of iDecking EasyClick system, available exclusively through Wallbarn.



TECHNICAL DATA

MATERIAL	INJECTION MOULDED POLYPROPYLENE
NORMAL WEIGHT TOLERANCE	683KG
MAX LOAD	1171KG
MAX TEMPERATURE	PLUS 75 °C
MIN TEMPERATURE	MINUS 40 °C
BASE PLATE DIAMETER	200MM
HEADPIECE DIAMETER	120MM
CODE	DESCRIPTION
SP-FLAT-025-FIXED	FLAT HEADED 25MM FIXED PAD
SP-FLAT-035-FIXED	FLAT HEADED 35MM FIXED PAD
SP-FLAT-035	35-50MM FLAT HEADED ADJUSTABLE SUPPORT PAD
SP-FLAT-050	50-70MM FLAT HEADED ADJUSTABLE SUPPORT PAD
SP-FLAT-065	65-100MM FLAT HEADED ADJUSTABLE SUPPORT PAD
SP-FLAT-095	95-130MM FLAT HEADED ADJUSTABLE SUPPORT PAD
SP-FLAT-125	125-160MM FLAT HEADED ADJUSTABLE SUPPORT PAD
SP-FLAT-155	155-190MM FLAT HEADED ADJUSTABLE SUPPORT PAD
SP-FLAT-185	185-220MM FLAT HEADED ADJUSTABLE SUPPORT PAD
SP-FLAT-210	210-245MM FLAT HEADED ADJUSTABLE SUPPORT PAD
SP-FLAT-240	240-275MM FLAT HEADED ADJUSTABLE SUPPORT PAD
SP-FLAT-270	270-305MM FLAT HEADED ADJUSTABLE SUPPORT PAD
SP-FLAT-300	300-335MM FLAT HEADED ADJUSTABLE SUPPORT PAD
SP-FLAT-330	330-365MM FLAT HEADED ADJUSTABLE SUPPORT PAD
SP-FLAT-EXTRA-085-Z	85-135MM EXTRA FLAT HEADED ADJUSTABLE SUPPORT PAD
SP-FLAT-EXTRA-125-Z	125-215MM EXTRA FLAT HEADED ADJUSTABLE SUPPORT PAD
SP-FLAT-EXTRA-210-Z	210-380MM EXTRA FLAT HEADED ADJUSTABLE SUPPORT PAD

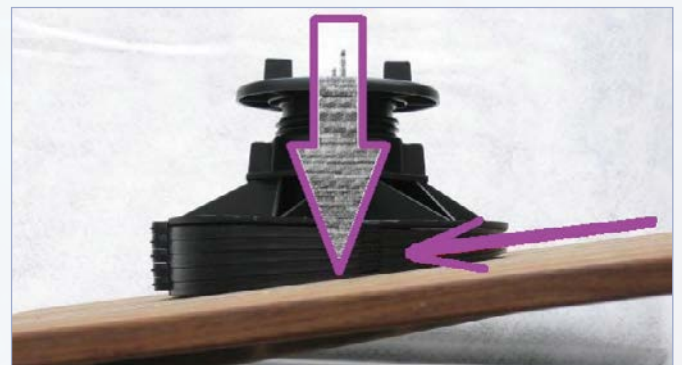
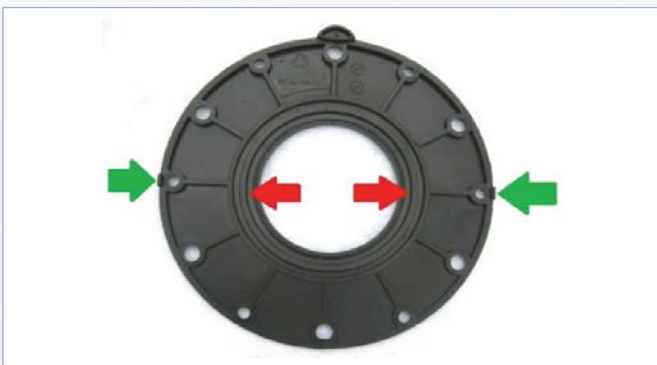
SLOPE CORRECTORS FOR TD, TD PLUS, TD MOBILE & TD MEGAPAD PEDESTALS

Slope correctors are wedge shaped plastic levellers which are clipped or fitted onto the base plate of adjustable pedestals. They are suitable for use with TD and TD Megapad supports; including the new mini-Megapads and the TD EXTRA range.

Slope correctors are available in three sizes, with a 1%, 2% and 3% gradient.



They are designed to arrest the fall of the roof or deck which will be built to a fall for drainage. By having these wedges attached underneath, the support pads remain completely vertical and straight, which ensures the force of gravity runs directly vertical (see purple arrows below), preventing tilting and keeping the support pad more stable.



They are very easy to apply to the base plate. For the 200mm diameter base plates, two simple clips (green arrows) fix around the lip of the baseplate. All 150mm base plates have a groove inside the perimeter which slots into a series of ridges (red arrows) situated on the inner ring of the slope corrector.

More than one slope corrector can be applied if required as one can clip onto another very easily. Wallbarn recommends that pedestals are used on roof decks with a maximum slope of 10%.

The gradient or slope is measured as a percentage. The deck is most commonly laid to a fall around 1 in 40, so a 2% slope corrector is normally chosen.

TECHNICAL DATA

MATERIAL	INJECTION MOULDED POLYPROPYLENE	
MAX TEMPERATURE	MOBILE 75 °C	
MIN TEMPERATURE	MINUS 40 °C	
OUTER DIAMETER	200MM	
INNER DIAMETER	82MM	
CODE	DESCRIPTION	
SP-ASP-SLOPE001	1 PERCENT SLOPE CORRECTOR	ASP, ASP EXTRA, MEGAPAD, MINI-MEGAPAD TD, TD PLUS, TD MOBILE, TD EXTRA, TD MEGAPAD, TD MINI MEGAPAD
SP-ASP-SLOPE002	2 PERCENT SLOPE CORRECTOR	
SP-ASP-SLOPE003	3 PERCENT SLOPE CORRECTOR	



FOR MORE INFORMATION PLEASE CONTACT:

WALLBARN LTD

UNIT 16, CAPITAL BUSINESS CENTRE • 22 CARLTON ROAD • SOUTH CROYDON • CR2 OBS • UK

T: +44 (0)20 8916 2222 • F: +44 (0)20 8916 2223

E: SALES@WALLBARN.COM • W: WWW.WALLBARN.COM