

**Joist Seal - 225mm High**

CODE **G912**

**Description**

The G912 range is designed to solve the problems of air leakage associated with built in timber joists. The box is placed over the end of the joist and built into the inner leaf of the external wall construction with a foam gasket sealing up the penetration. As the timber dries out and shrinks the seal is still maintained between the box and the masonry, thus preventing air leakage into the cavity.

Located around the inner flange is a number of push out pockets for the location of restraining straps as required.

**Materials**

- Polypropylene  
- Foam Gasket Seal

**Colour**

Translucent White

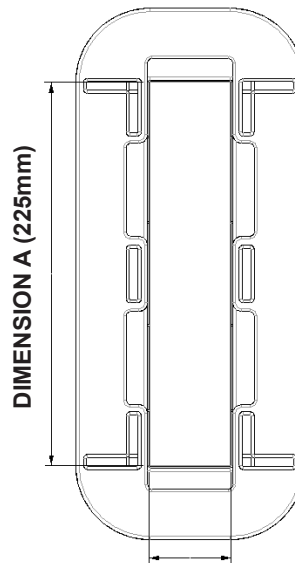
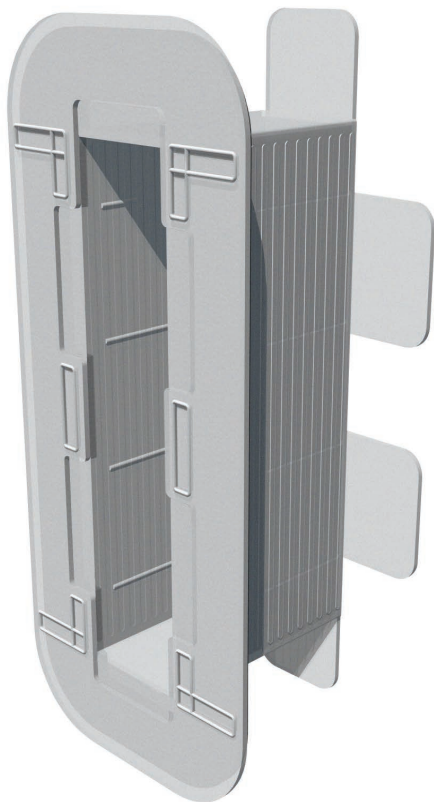
**Manufacturing**

Injection Moulded

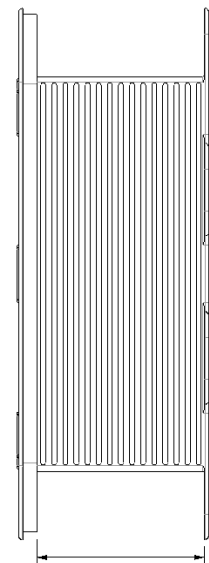


**References**

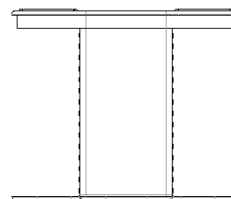
Building Regulations Part L  
Robust Details: Part E: Resistance to the Passage of Sound.  
(Appendix A, Pages 2-3).  
NHBC: Good Craftsmanship Guides



**DIMENSION B**



**DIMENSION C**



MANTHORPE BUILDING PRODUCTS LTD  
MANTHORPE HOUSE  
BRITAIN DRIVE  
CODNOR GATE BUSINESS PARK  
RIPLEY  
DERBYSHIRE DE5 3ND

TEL: 01773 514 200  
FAX: 01773 514 262  
EMAIL: [bpsales@manthorpe.co.uk](mailto:bpsales@manthorpe.co.uk)  
WEB [www.manthorpe.co.uk](http://www.manthorpe.co.uk)

DRN B.H. Date 09.02.15

The company maintains a policy of continuous development of its product range and reserves the right to amend the specification without notice.

DRG No

**MBP 8212**

Issue

**E**  
1 of 2

**Joist Seal - 225mm High**

CODE **G912**

**Product Constraints**

The G912 Joist Seal accommodates both timber joists and I-beams with a maximum height of 225mm. Shorter joists heights can still be installed with the use of timber packers and for joists that exceed this height the taller G913 Joist Seal can be used.

The standard depth of the seal (**C**) is 100mm, variants are available to accommodate larger blockwork depths, however these are achieved by affixing flange extensions to the standard box depth. This means that regardless of the bed depth of the blockwork used, the seal will only permit the joist a bearing of 100mm over the block.

In order to match the correct joist seal to your specific requirements the following product code system is used:

**Product Code Selector**

**G91A-BB-CCC**

**A** = Maximum Joist Height (either 225mm or 302mm)

**B** = Joist Width (mm)

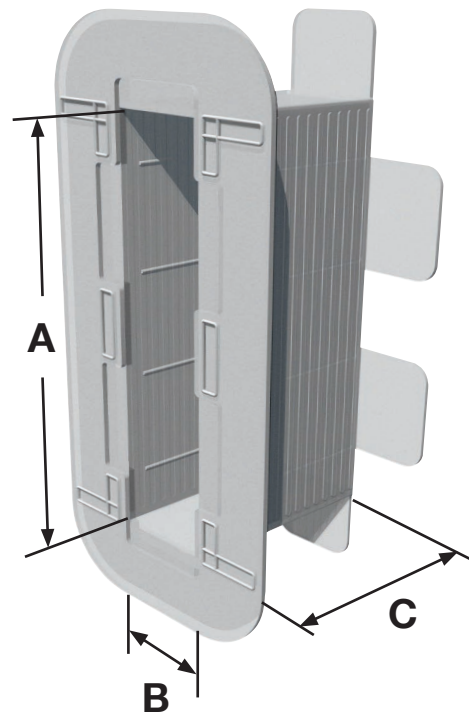
**C** = Depth of Blockwork (mm)

**Example:**

You are using a joist with a height of 225mm and a width of 48mm. This will be built into blockwork with a bed depth of 115mm.

You should use the following Joist Seal:

**G912-48-115**



		Blockwork Depth (C)				
		100mm	115mm	125mm	130mm	140mm
Joist Width (B)	40mm	G912-40-100	G912-40-115	G912-40-125	G912-40-130	G912-40-140
	48mm	G912-48-100	G912-48-115	G912-48-125	G912-48-130	G912-48-140
	65mm	G912-65-100	G912-65-115	G912-65-125	G912-65-130	G912-65-140
	75mm	G912-75-100	G912-75-115	G912-75-125	G912-75-130	G912-75-140
	90mm	G912-90-100	G912-90-115	G912-90-125	G912-90-130	G912-90-140
	100mm	G912-100-100	G912-100-115	G912-100-125	G912-100-130	G912-100-140
	150mm	G912-150-100	G912-150-115	G912-150-125	G912-150-130	G912-150-140

MANTHORPE BUILDING PRODUCTS LTD  
 MANTHORPE HOUSE  
 BRITTAIN DRIVE  
 CODNOR GATE BUSINESS PARK  
 RIPLEY  
 DERBYSHIRE DE5 3ND

TEL: 01773 514 200  
 FAX: 01773 514 262  
 EMAIL: bpsales@manthorpe.co.uk  
 WEB www.manthorpe.co.uk

DRN B.H. Date 09.02.15

The company maintains a policy of continuous development of its product range and reserves the right to amend the specification without notice.

DRG No

**MBP 8212**

Issue

**E**  
2 of 2