

INSTALLATION INSTRUCTIONS FOR LAMINATE FLOORING BATHROOMS AND KITCHENS



YOU CAN SEE THE VIDEO INSTALLATION OUR WEB

and

1



Before laying Faus laminate flooring, make sure that the subfloor of the area is completely level. Faus laminate flooring can be laid on concrete, vinyl, linoleum, wood, tiles, marble or stone. Remove carpeting if any. Very important as well is to leave existing skirtings. Product acclimation is necessary during 48 h before installation.

2



When laying Faus laminate flooring over any subfloor, a foam underlay with a moisture/vapor barrier must always be installed first ("underlay" FAUS).

Besides a levelling function, it insulates and cushions the flooring reducing impact and footfall sound.

This underlay should cover the entire floor area. When you lay it, make sure that the foam does not overlap the foam of the next row.

To be installed with overlap joints by the use of the protruding PE film at the edge and to be sealed with adhesive tape.

This point is very important and in case this underlayment has not the moisture/ vapor barrier attached to it, it is necessary to buy it separately.

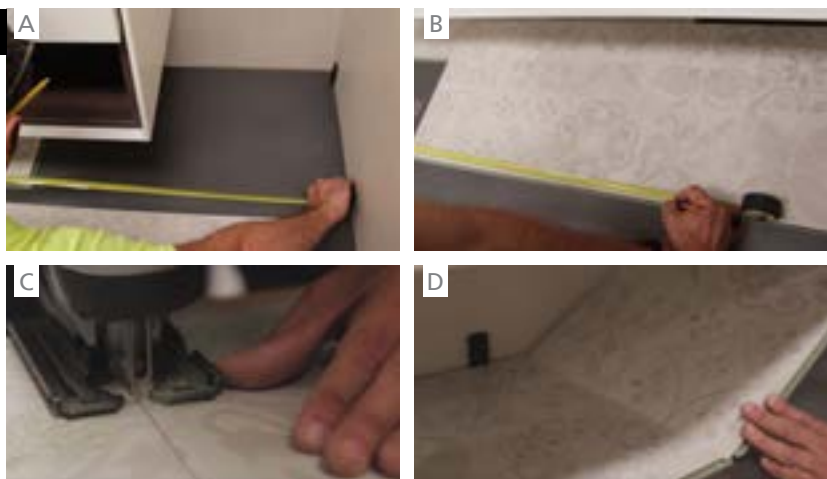
3



Start in the left-hand corner and lay the first plank, the tongue side of the board (the less machined edge) facing the wall and place plastic spacers between the wall and the plank. We suggest to trim the tongue outgoing to avoid any problems with the expansion gaps.

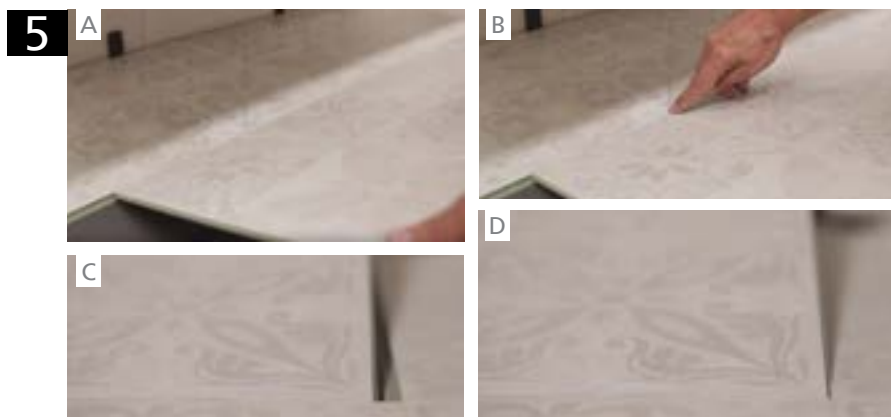
Leave 10 – 12 mm expansion gaps all around the walls and other fixed elements.

4

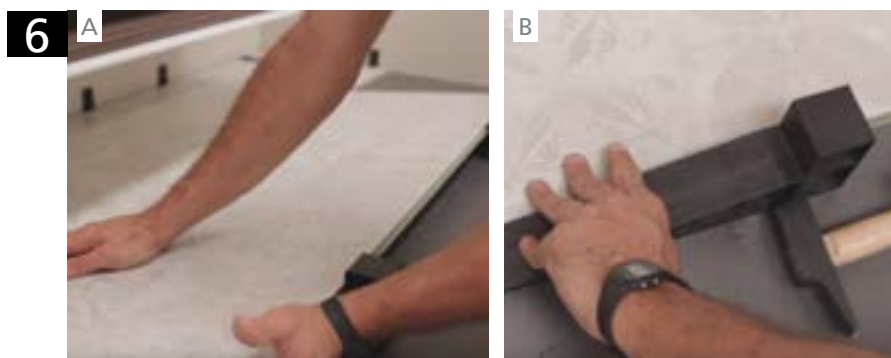


Insert the short end of the next plank in angle and snap it to the first one. Continue along the row. Cut the last board of the row to fit it in (it is necessary to use a saw for wood).

INSTALLATION INSTRUCTIONS FOR LAMINATE FLOORING BATHROOMS AND KITCHENS



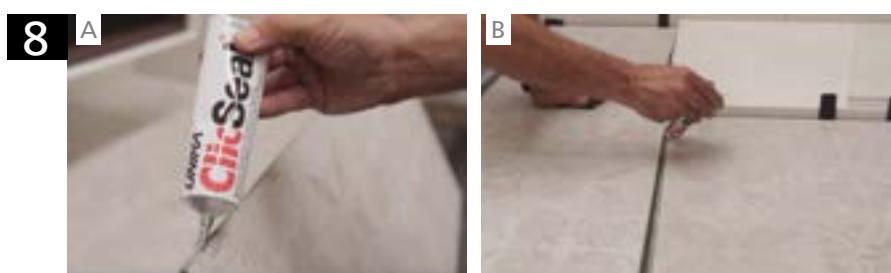
Start the second row, according the special features of the design choosen. In the design shown in these pictures, for example, plank has to be cut as per the coincidence of each tile bevels (around 50% of the plank of previous row). In the case of wood or stone designs and if their structure allows it, start with the off-cut from the previous row, provided its size is greater than 40 cm.



While flooring can be laid without the need of any kind of tool, there are special mounting spacers (that we recommend:). In both cases, the installation is very similar . Spacers are a simple solution to obtain the proper angle (about 7°), for a perfect plank assembly. If no spacers are used, simply lift slightly the last plank laid to fit each board together thanks to our system .



On areas where full length planks can not be laid, measure and trace a guide line with a pencil along the surface. Take in mind always to leave the expansion gap.

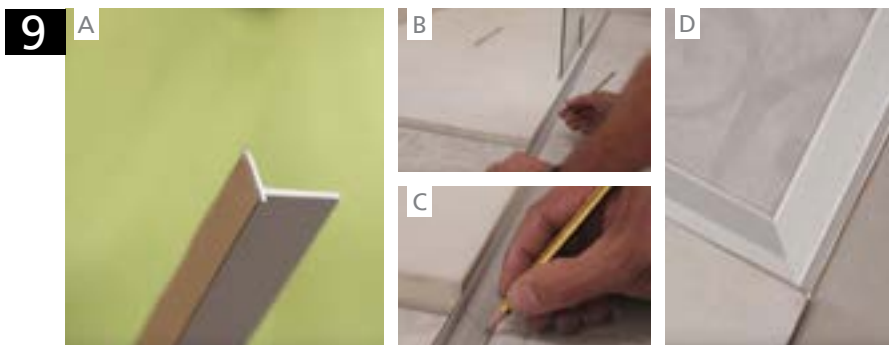


Generally there is no need to use it, but in areas with large and continuous water spills, it is highly recommended to apply our Click Seal Floor joint sealant. Apply to the flooring tongue before laying the plank. Remove any surplus.

ONCE INSTALLED THE LAMINATE FLOORING ...



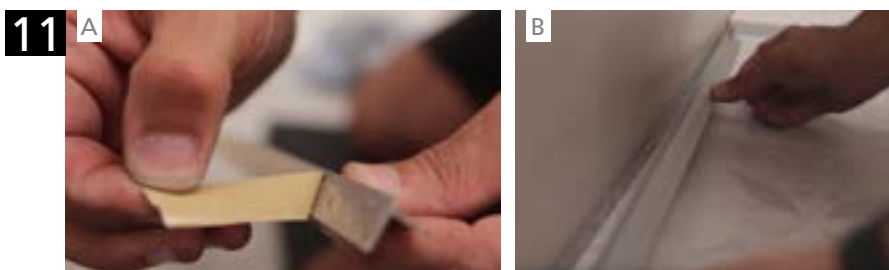
INSTALLATION INSTRUCTIONS FOR LAMINATE FLOORING BATHROOMS AND KITCHENS



Prepare the aluminium skirting. Place the adhesive side on the wall (do not remove the protective film up to step 11), the bottom side of the profile must be laid on the expansion gap. Put first the aluminium profile and mark the cuts. It is very important to make mitre cuts.



After measuring and cutting the profiles, it is time to apply flexible silicone in all the area between floor-wall and planks to fill in the expansion gap.



Remove the protective film . Place the skirting, pushing it till the complete fitting.

FINAL PRESENTATION

